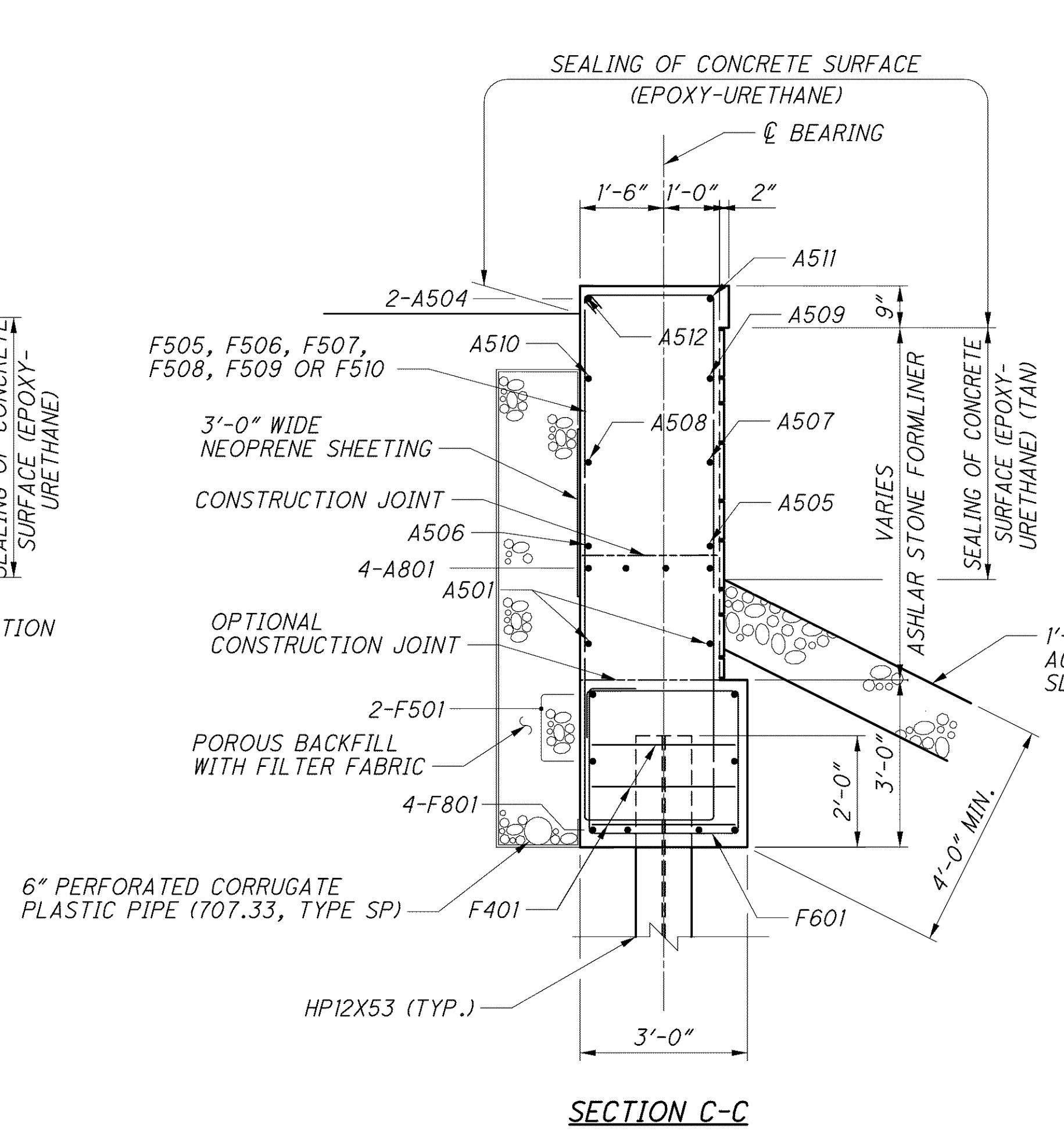
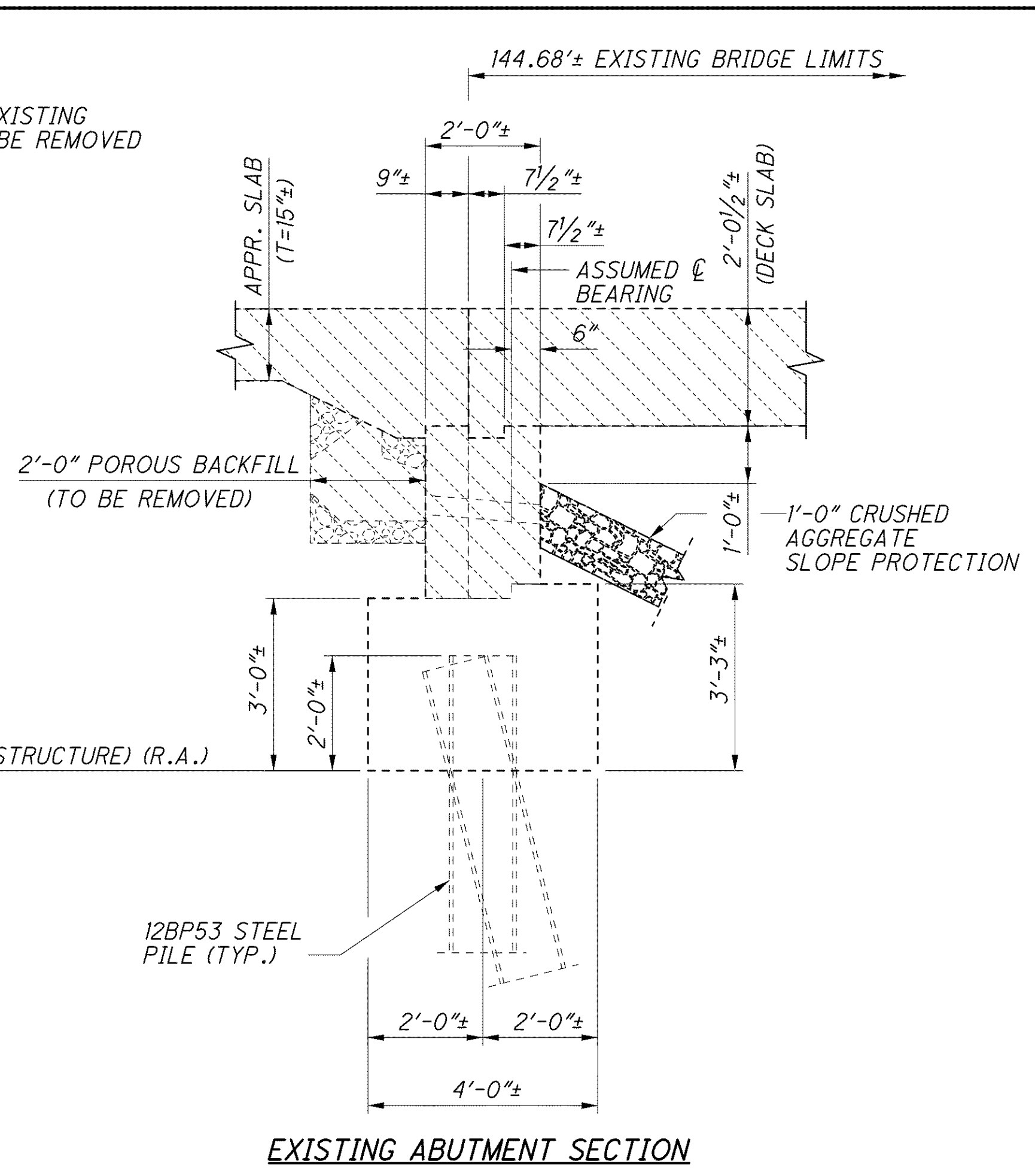
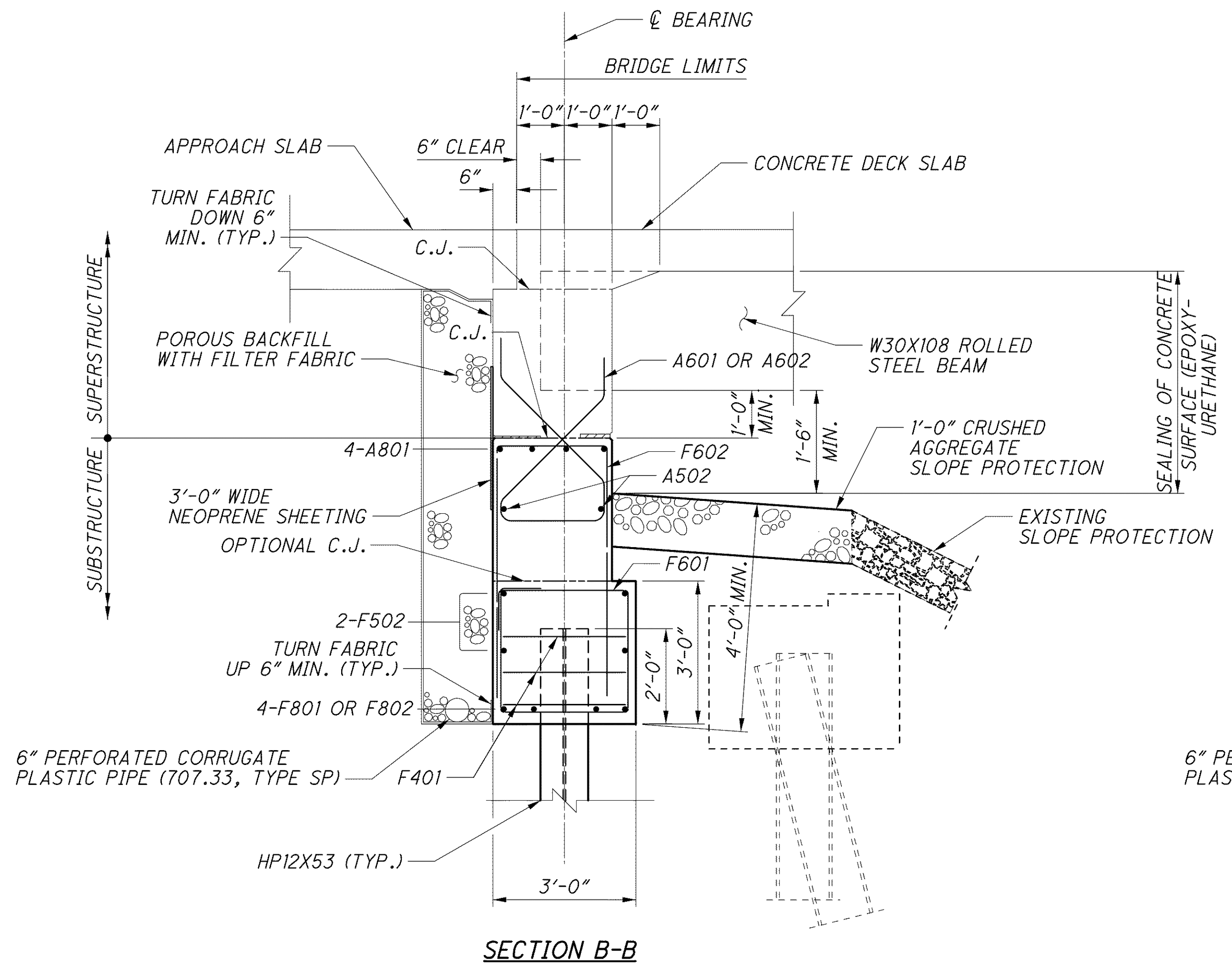
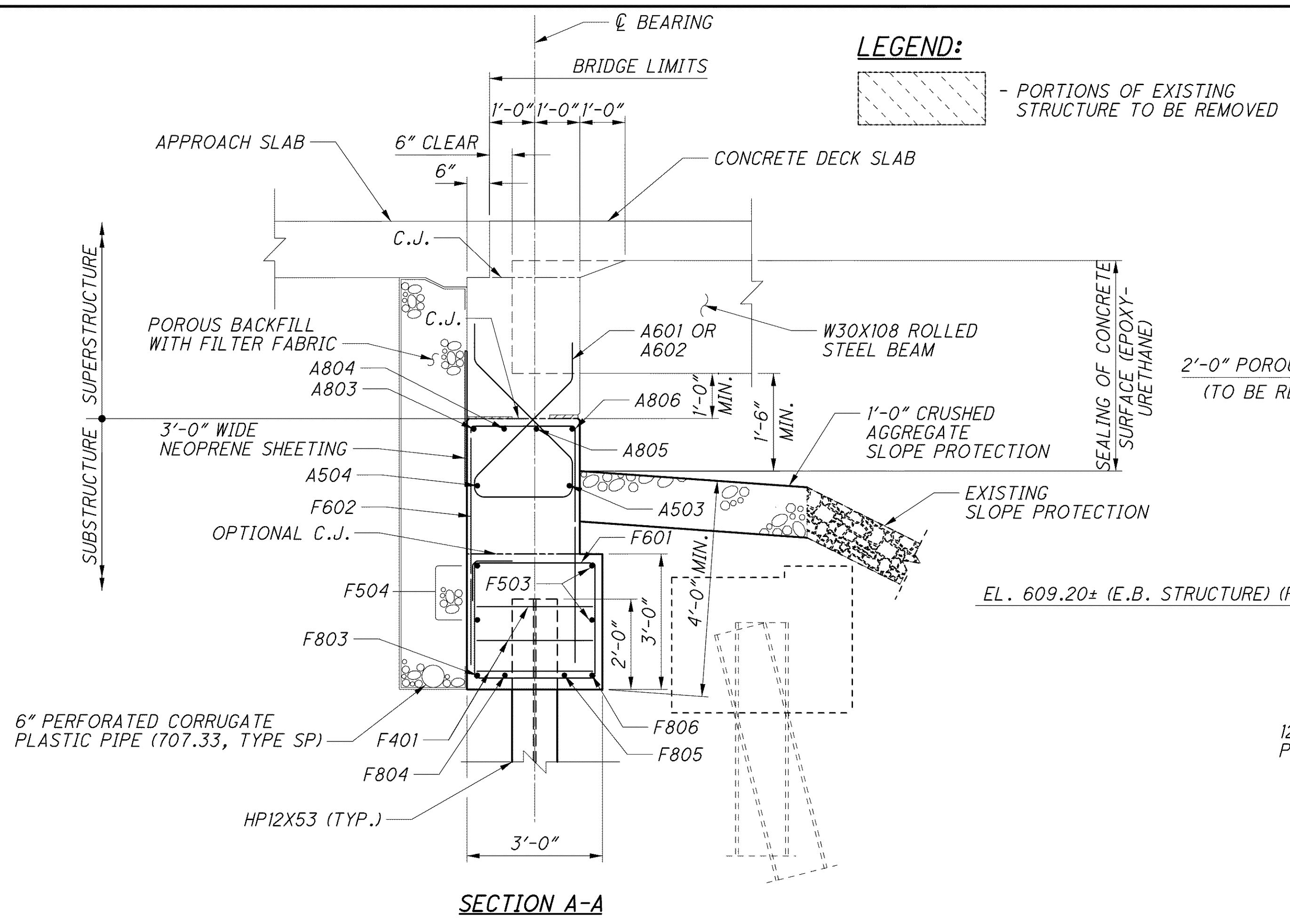
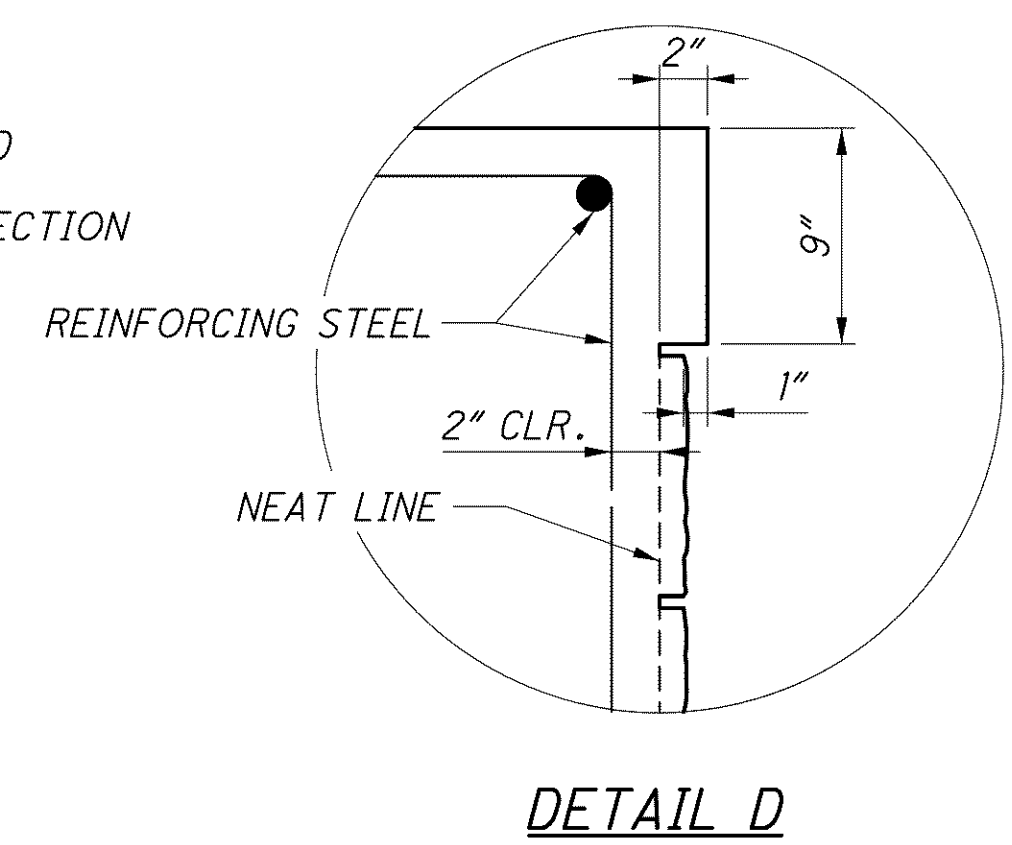
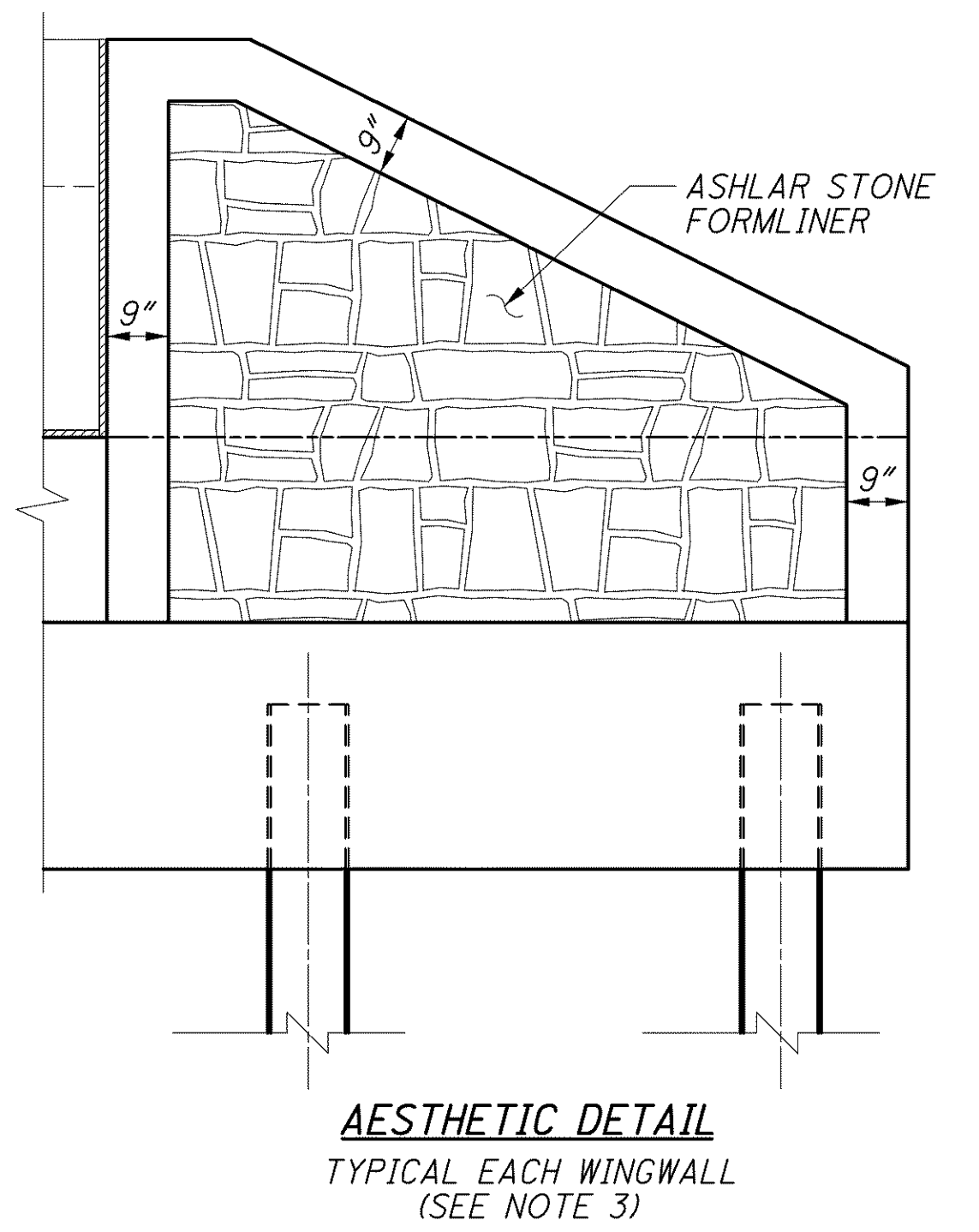


J:\LAK\13486\bridge\LAK002\_0486C\_sheets\002\_0486CAR005.dgn 03-JUL-2008 1:40PM lintn



- NOTES:**
1. POROUS BACKFILL WITH FILTER FABRIC, 2 FEET THICK SHALL EXTEND UP TO THE PLANE OF THE SUBGRADE, TO 1 FOOT BELOW THE EMBANKMENT SURFACE, AND Laterally TO THE ENDS OF THE WINGWALLS.
  2. TYPE 2 WATERPROOFING SHALL BE CENTERED VERTICALLY OVER PHASE CONSTRUCTION JOINTS AND EXTENDED FROM THE TOP OF WALL DOWN TO THE TOP OF FOOTING.
  3. PROVIDE ITEM 512 SEALING OF CONCRETE SURFACES EPOXY-URETHANE, FEDERAL COLOR NUMBER (TAN) FOR ALL AREAS TREATED WITH ASHLAR STONE FORMLINER.
  4. FOR LIST OF ABBREVIATIONS SEE SHEET 4/70.



DESIGN AGENCY: PARSONS BRINCKERHOFF QUAADE & DOUGLAS, INC. 614 W. SUPERIOR AVE., SUITE 400 CLEVELAND, OHIO 44113

DESIGNED	P.J.L.	CHECKED	EBS
DRAWN	B.K.J.	REVISED	
REVIEWED	R.J.O.	STRUCTURE FILE NUMBER	4300696 (L) 4300726 (R)
DATE	6-19-08		

**EASTBOUND REAR ABUTMENT DETAILS**  
 BRIDGE NO. LAK-2-0486 L&R  
 STATE ROUTE 2 OVER ERIE ROAD

**LAK-2-3.32**  
 PID No. 13486

19 / 70

1411  
 1679