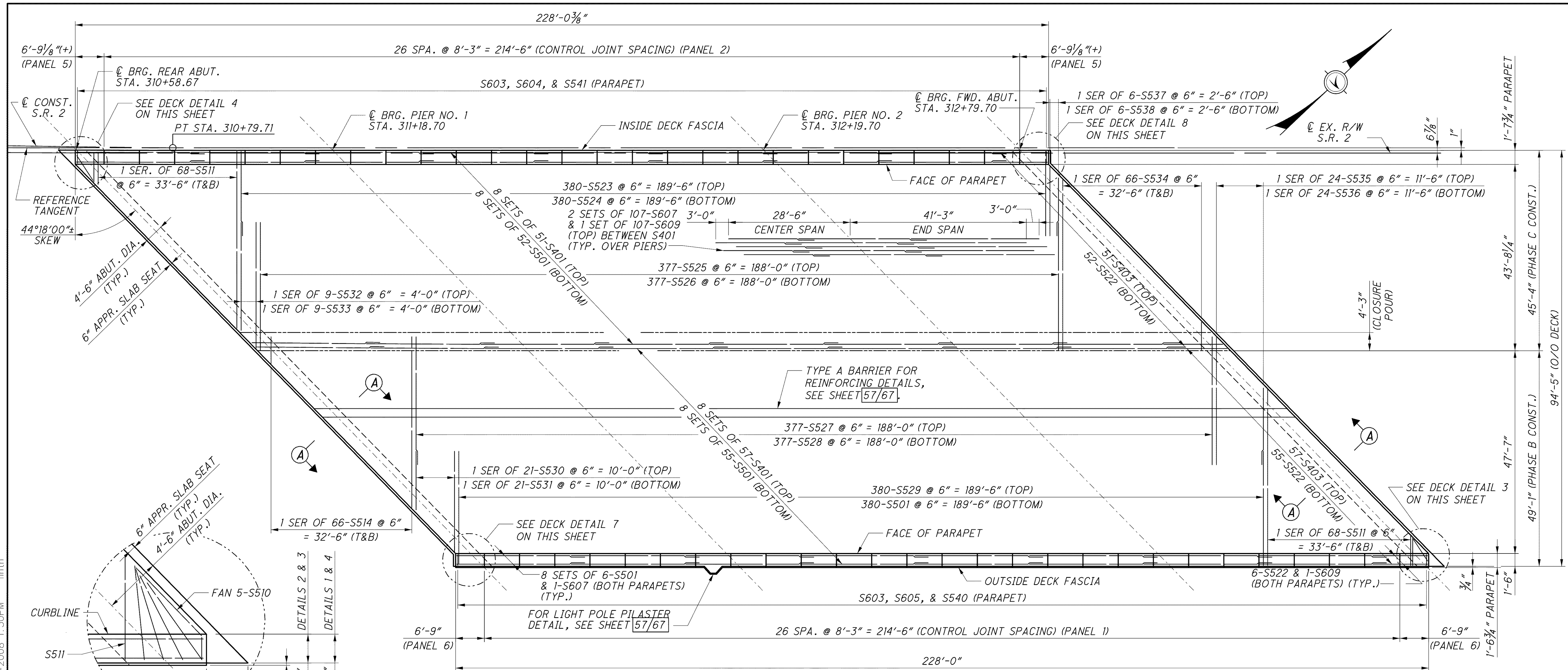
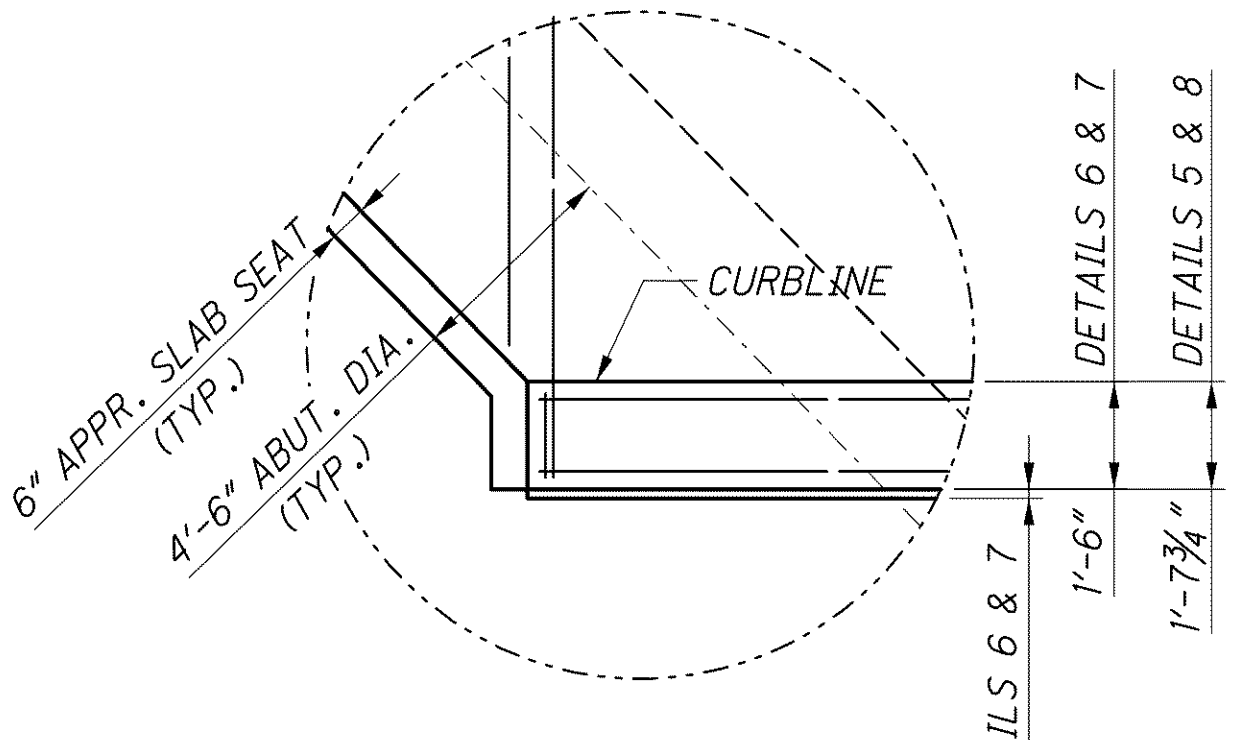


j:\LAK\13486\bridge\LAK002_0400C\sheets\002_0400CDP002.dgn 03-JUL-2008 1:50PM jlntr



SLAB PLAN (RIGHT STRUCTURE)

DECK DETAIL 3 (SHOWN)
DECK DETAIL 1, 2, & 4 (SIMILAR)



DECK DETAIL 7 (SHOWN)
DECK DETAIL 5, 6, & 8 (SIMILAR)

ANTICIPATED DECK THICKNESS TABLE (DIM. A)																		
	LOCATION	REAR ABUTMENT	1/4	1/2	3/4	PIER 1	EXISTING SPLICE	PROPOSED SPLICE	1/4	1/2	3/4	PROPOSED SPLICE	EXISTING SPLICE	PIER 2	1/4	1/2	3/4	FORWARD ABUTMENT
LEFT STRUCTURE	GIRDER 1 THRU 5	11.00	11.00	11.00	11.00	11.00		10.75	10.75	10.75	10.75	10.75		11.00	11.00	11.00	11.00	11.00
	GIRDER B	9.79	10.45	11.12	9.92	10.61	10.76		11.56	11.97	11.51		10.77	10.70	9.80	11.04	10.67	10.56
	GIRDER C	10.47	10.82	11.33	10.15	11.01	11.25		12.08	12.13	11.69		10.91	10.75	10.12	11.59	11.42	11.48
	GIRDER D	10.31	10.54	10.99	9.78	10.65	10.75		11.49	11.62	11.63		10.90	10.77	10.01	11.35	11.03	10.93
	GIRDER E	11.00	11.11	11.45	10.15	10.94	10.36		10.61	10.79	11.26		10.53	10.40	9.78	11.24	11.04	11.07
	GIRDER F	12.05	12.05	12.28	10.86	11.53	11.27		11.74	11.89	12.30		11.82	12.02	11.85	13.72	13.89	14.24
RIGHT STRUCTURE	GIRDER G	12.63	12.66	12.87	11.39	11.95	11.71		12.22	12.62	13.32		12.93	13.22	13.22	15.35	15.84	16.58
	GIRDER 6 THRU 10	11.00	11.00	11.00	11.00	11.00		10.75	10.75	10.75	10.75	10.75		11.00	11.00	11.00	11.00	11.00
	GIRDER J	13.10	12.33	11.94	10.21	10.78	10.63		11.18	11.51	11.99		11.46	11.57	12.49	14.52	13.93	12.58
	GIRDER K	13.04	12.60	12.32	10.43	10.49	9.79		9.96	10.44	11.26		10.59	10.52	10.88	12.63	12.01	10.91
	GIRDER L	13.23	12.24	12.06	10.60	11.60	11.58		12.18	12.40	12.47		11.64	11.34	11.77	13.51	12.81	11.56
	GIRDER M	15.82	15.10	14.87	13.10	13.54	12.79		12.89	12.71	12.90		12.19	12.12	11.85	13.12	12.17	10.88
GIRDER N	14.24	13.55	13.29	11.58	12.17	11.78		12.15	12.74	13.28		12.35	11.88	11.50	12.79	12.00	11.01	
GIRDER P	13.16	12.10	11.62	9.84	10.51	10.61		11.34	12.66	13.49		12.39	11.59	11.01	12.09	11.07	9.84	

NOTES

- FOR ADDITIONAL NOTES & PANEL DETAILS SEE SHEET 55/67.
- FOR LOCATION OF ANTICIPATED DECK THICKNESS (DIM. A), SEE SHEETS 54/67 & 58/67.
- MINIMUM BAR LAPS: #4 = 30" #5 = 36", #6 = 44".
- FOR LIST OF ABBREVIATIONS, SEE SHEET 4/67.
- FOR HAUNCH REINFORCING DETAILS, SEE SHEET 58/67.
- ALL PHASES REFERENCED ARE TO BE COMPLETED UNDER STAGE 3 SEQUENCE OF CONSTRUCTION, SEE NOT DRAWINGS.
- ALL PARAPET AND PANEL LENGTHS MEASURED ALONG CURBLINE.
- FOR SECTION A-A, SEE SHEET 57/67.
- FOR ABUTMENT DIAPHRAGM REINFORCING, SEE SHEETS 46/67 THRU 53/67.

DESIGN AGENCY: PARSONS BRINCKERHOFF, QUADE & DOUGLAS, INC. 614 W. SUPERIOR AVE., SUITE 400 CLEVELAND, OHIO 44113

DATE: 6-19-08

REVIEWED: RJO

DRAWN: NAL

DESIGNED: BMG

CHECKED: PWP

STRUCTURE FILE NUMBER: 4300572(L) 4300602(R)

SLAB PLAN (RIGHT STRUCTURE)

BRIDGE NO. LAK-2-0400 L&R

STATE ROUTE 2 OVER VINE STREET

LAK-2-3.32

PID No. 13486

56/67

1381

1679