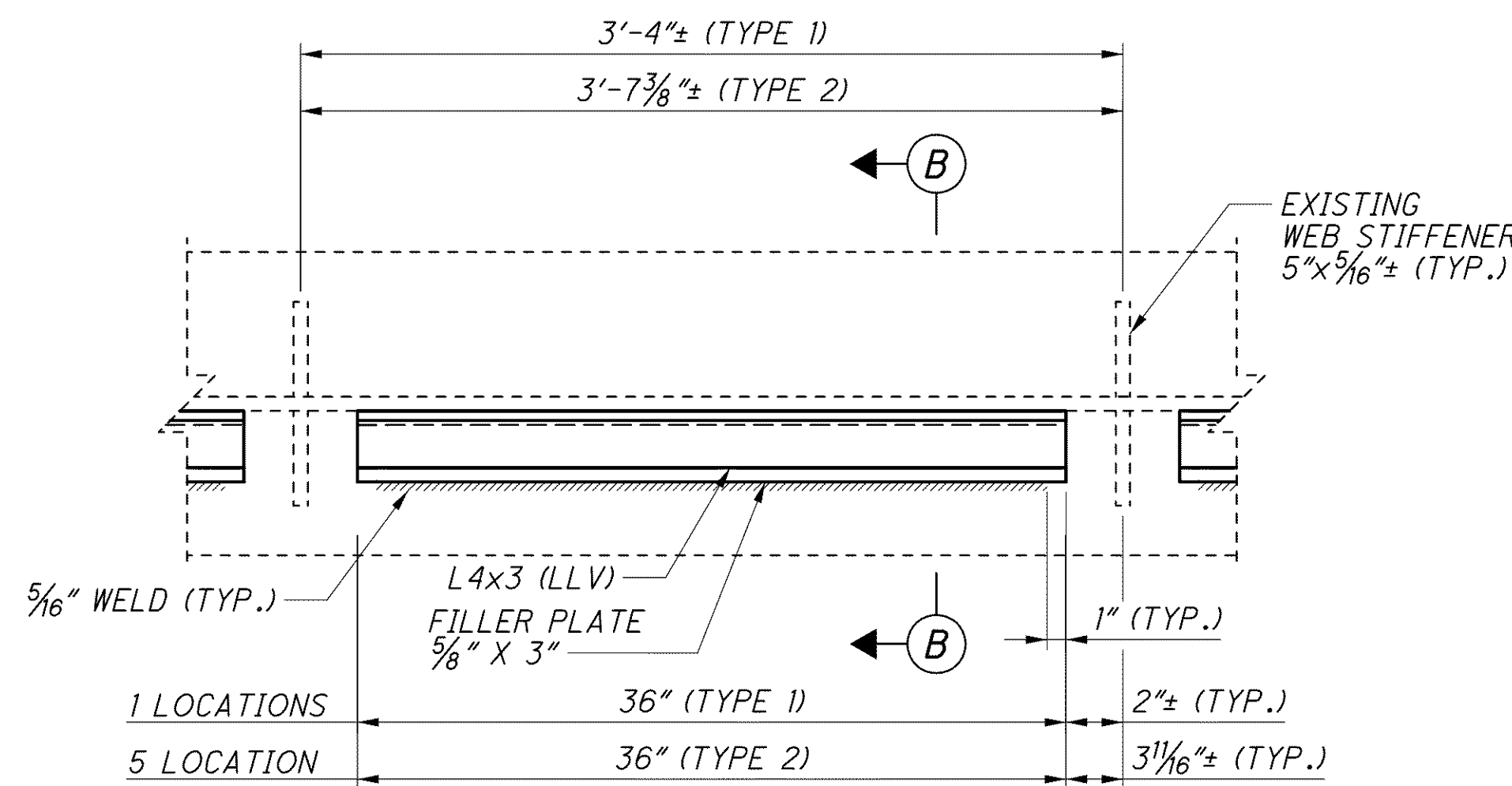
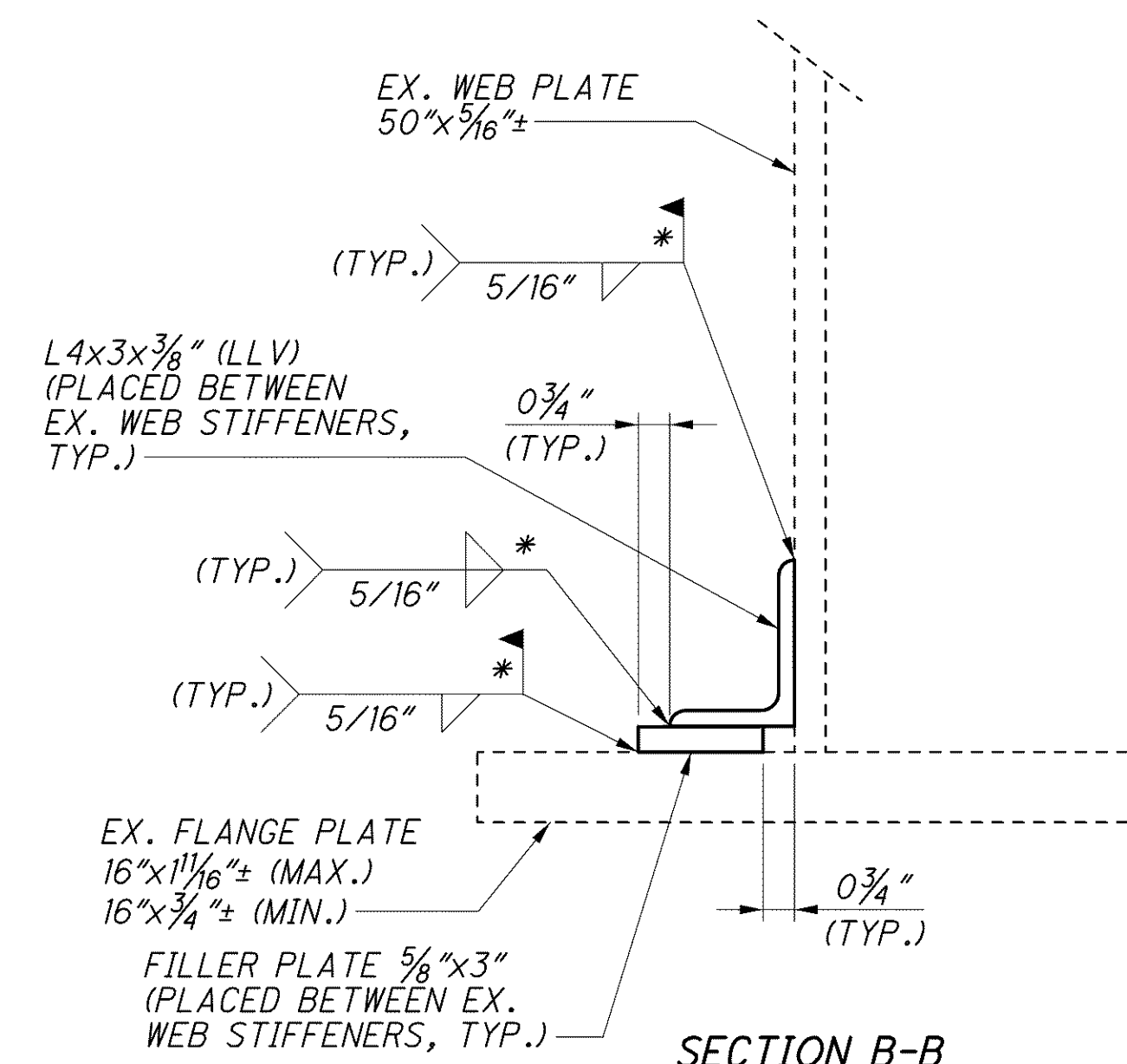


STIFFENER SPACING TABLE	
A	2 SPA. @ 3'-0"± = 6'-0"±
B	2 SPA. @ 3'-4"± = 6'-8"±
C	6 SPA. @ 3'-7 5/16"± = 21'-8"±
D	4 SPA. @ 2'-8"± = 10'-8"±
E	7 SPA. @ 2'-4"± = 16'-4"±
F	5 SPA. @ 2'-8"± = 13'-4"±
G	5 SPA. @ 3'-0"± = 15'-0"±
H	5 SPA. @ 3'-3 1/4"± = 16'-4"±

**EXISTING GIRDER H TEMPORARY REPAIR DETAIL**  
(LOOKING SOUTHEAST)



**SECTION A-A**  
(ONLY WELD FROM FILLER PLATE TO FLANGE SHOWN FOR CLARITY)



\* WELD LENGTH SHALL EXTEND TO WITHIN 1" OF END OF PLATE AND ANGLE MEMBER.

**NOTES**

- THIS REPAIR SHALL BE COMPLETE PRIOR TO SHIFTING TRAFFIC ON THE BRIDGE FOR STEP 3, PHASE B MAINTENANCE OF TRAFFIC.
- FOR LIST OF ABBREVIATIONS, SEE SHEET 4/67.
- THE REPAIR LOCATIONS SHOWN ARE IN STIFFENER BAYS # 9, 11, 67, 68, 69, AND 70. THE REPAIR SHOWN IS FOR WEB LOCATIONS WITH THROUGH HOLES AT THE TIME OF INSPECTION. THE CONTRACTOR SHALL REPAIR ADDITIONAL LOCATIONS AS DETERMINED BY THE ENGINEER FOR THE CONTRACT UNIT PRICE. A CONTINGENCY QUANTITY HAS BEEN INCLUDED IN THE PLAN, SEE NOTE SHEET 4/67.
- THE CONTRACTOR SHALL INSPECT ALL FIELD REPAIR WELDS USING THE ULTRASONIC TESTING METHOD PER ODOT SPECIFICATION 513.25.
- ALL PROPOSED STRUCTURAL STEEL SHALL MEET THE REQUIREMENTS OF LEVEL 1 FABRICATION PER ODOT CMS 513.

j:\LAK\13486\bridge\LAK002\_0400C\sheets\002\_0400CSD012.dgn 03-JUL-2008 1:46PM lntn

EXISTING GIRDER H TEMPORARY REPAIR DETAILS

BRIDGE NO. LAK-2-0400 L&R  
STATE ROUTE 2 OVER VINE STREET

LAK-2-3.32  
PID No. 13486

45/67

1370  
1679

DESIGN AGENCY  
**PARSONS BRINCKERHOFF**  
OUADE & DOUGLAS, INC.  
614 W. SUPERIOR AVE., SUITE 400  
CLEVELAND, OHIO 44113

DATE 6-19-08  
REVISED STRUCTURE FILE NUMBER 4300572(L) 4300602(R)

DRAWN NAL  
DESIGNED BMG  
CHECKED PWP