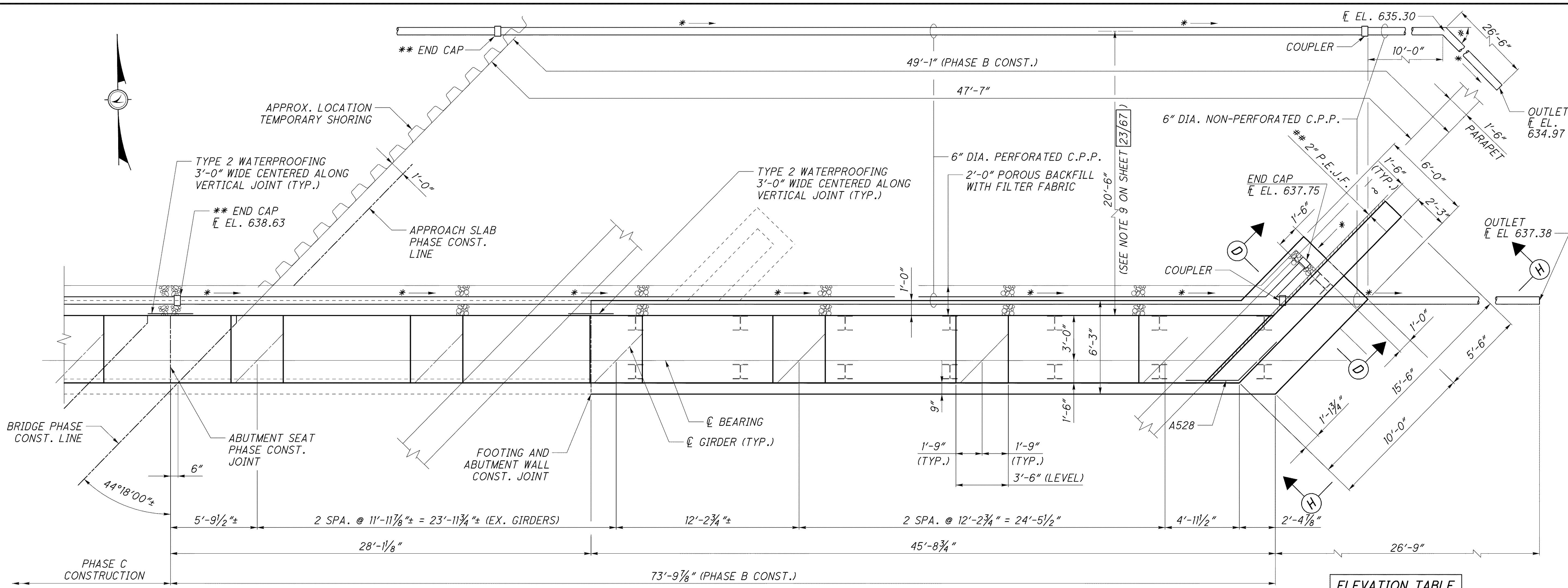
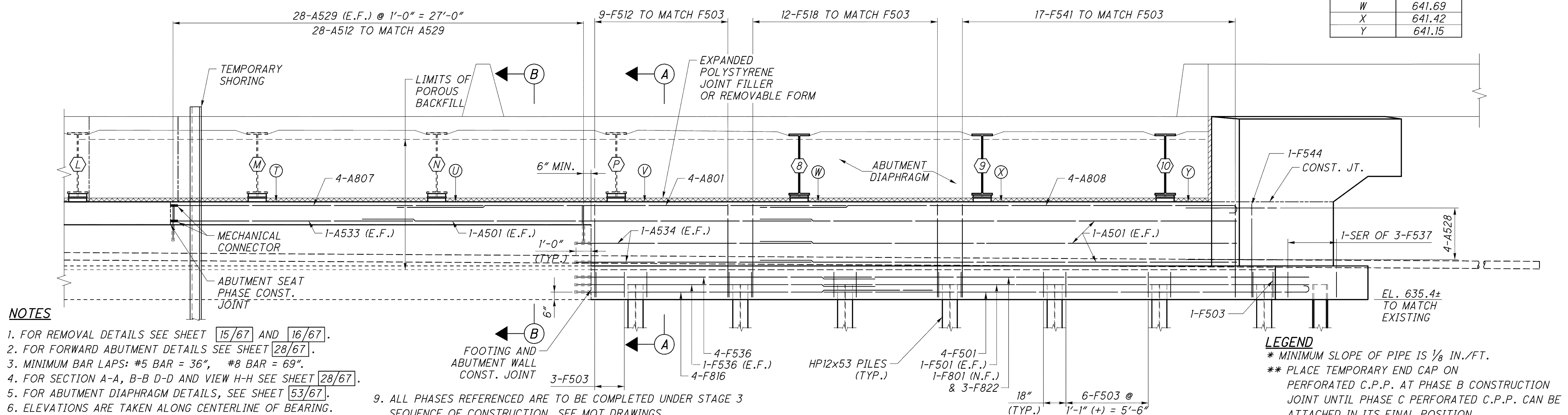


J:\LAK\13486\bridge\LAK002_0400C\sheets\02_0400CAF004.dgn 03-JUL-2008 1:42PM Inth



T	642.38
U	642.12
V	641.96
W	641.69
X	641.42
Y	641.15

PLAN
(RIGHT FORWARD ABUTMENT)



ELEVATION
(RIGHT FORWARD ABUTMENT)

- NOTES**
- FOR REMOVAL DETAILS SEE SHEET [15/67] AND [16/67].
 - FOR FORWARD ABUTMENT DETAILS SEE SHEET [28/67].
 - MINIMUM BAR LAPS: #5 BAR = 36", #8 BAR = 69".
 - FOR SECTION A-A, B-B D-D AND VIEW H-H SEE SHEET [28/67].
 - FOR ABUTMENT DIAPHRAGM DETAILS, SEE SHEET [53/67].
 - ELEVATIONS ARE TAKEN ALONG CENTERLINE OF BEARING.
 - FOR PHASE C CONSTRUCTION OF RIGHT FORWARD ABUTMENT, SEE SHEET [26/67].
 - FOR LIST OF ABBREVIATIONS, SEE SHEET [4/67].
 - ALL PHASES REFERENCED ARE TO BE COMPLETED UNDER STAGE 3 SEQUENCE OF CONSTRUCTION, SEE MOT DRAWINGS.
 - FOR ADDITIONAL ABUTMENT FOOTING REINFORCING DETAIL, SEE SHEET [29/67].
 - FOR SOIL REINFORCING LIMITS, SEE SHEET [23/67].

- LEGEND**
- * MINIMUM SLOPE OF PIPE IS 1/8 IN./FT.
 - ** PLACE TEMPORARY END CAP ON PERFORATED C.P.P. AT PHASE B CONSTRUCTION JOINT UNTIL PHASE C PERFORATED C.P.P. CAN BE ATTACHED IN ITS FINAL POSITION.
 - # 44°18'00"
 - ** COST INCLUDED WITH SUBSTRUCTURE CONCRETE FOR PAYMENT.

DESIGN AGENCY
PARSONS BRINCKERHOFF
QUADE & DOUGLAS, INC.
614 W. SUPERIOR AVE., SUITE 400
CLEVELAND, OHIO 44115

DATE: 6-19-08
RJO
STRUCTURE FILE NUMBER: 4300572(L) 4300602(R)

DESIGNED: ZM
CHECKED: JOZ

DRAWN: DCP
REVISED:

FORWARD ABUTMENT PLAN & ELEVATION IV
BRIDGE NO. LAK-2-0400 L&R
STATE ROUTE 2 OVER VINE STREET

LAK-2-3.32
PID No. 13486

27/67

1352
1679