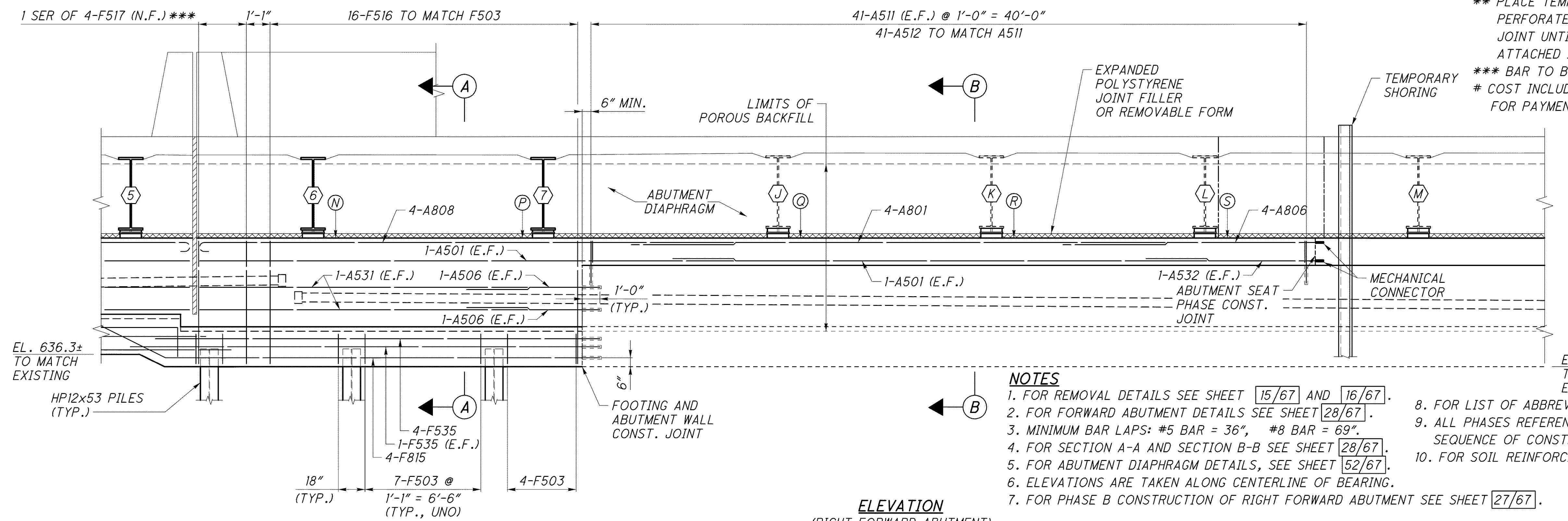
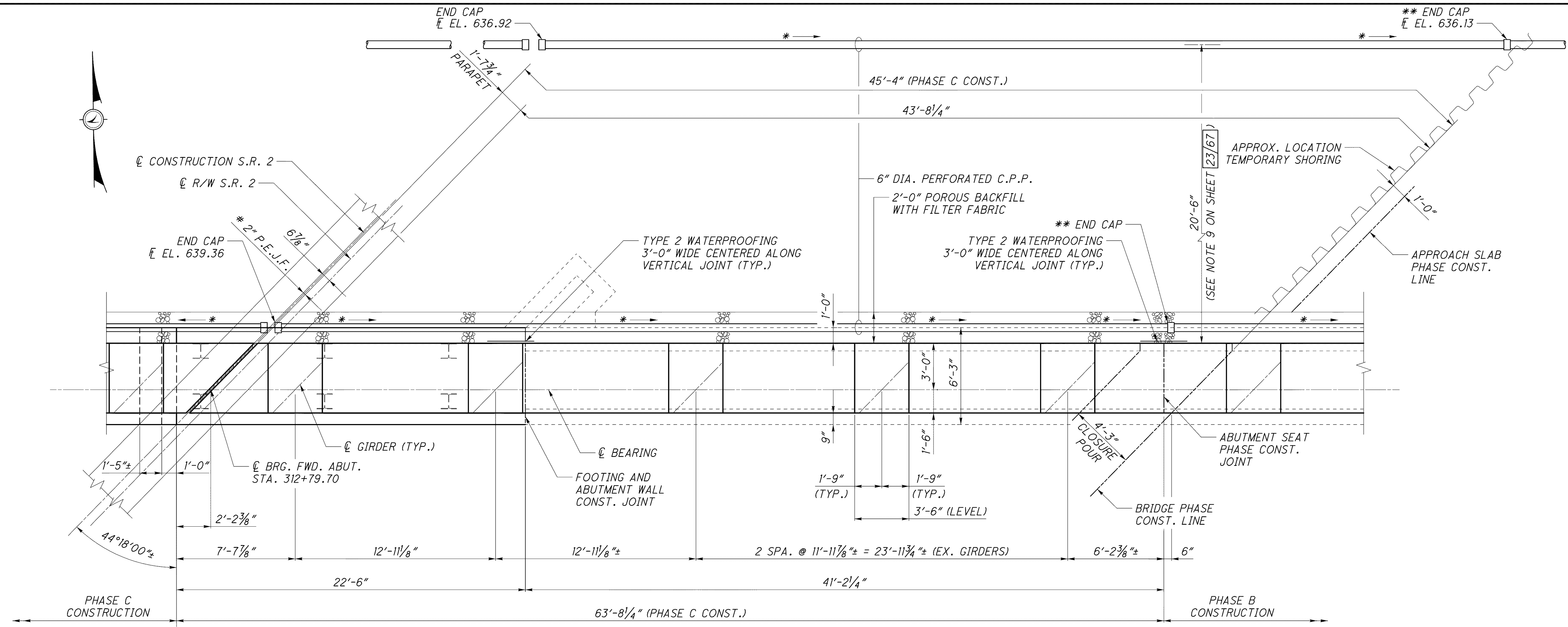


J:\LAK\13486\bridge\LAK002\_0400C\sheets\02\_0400CAF003.dgn 03-JUL-2008 1:42PM Inrt



Point	Elevation
N	642.78
P	642.85
Q	642.68
R	642.73
S	642.51

**LEGEND**

- \* MINIMUM SLOPE OF PIPE IS 1/8 IN./FT.
- \*\* PLACE TEMPORARY END CAP ON PERFORATED C.P.P. AT PHASE B CONSTRUCTION JOINT UNTIL PHASE C PERFORATED C.P.P. CAN BE ATTACHED IN ITS FINAL POSITION.
- \*\*\* BAR TO BE FANNED.
- # COST INCLUDED WITH SUBSTRUCTURE CONCRETE FOR PAYMENT.

**NOTES**

- FOR REMOVAL DETAILS SEE SHEET 15/67 AND 16/67.
- FOR FORWARD ABUTMENT DETAILS SEE SHEET 28/67.
- MINIMUM BAR LAPS: #5 BAR = 36", #8 BAR = 69".
- FOR SECTION A-A AND SECTION B-B SEE SHEET 28/67.
- FOR ABUTMENT DIAPHRAGM DETAILS, SEE SHEET 52/67.
- ELEVATIONS ARE TAKEN ALONG CENTERLINE OF BEARING.
- FOR PHASE B CONSTRUCTION OF RIGHT FORWARD ABUTMENT SEE SHEET 27/67.
- FOR LIST OF ABBREVIATIONS, SEE SHEET 4/67.
- ALL PHASES REFERENCED ARE TO BE COMPLETED UNDER STAGE 3 SEQUENCE OF CONSTRUCTION, SEE MOT DRAWINGS.
- FOR SOIL REINFORCING LIMITS, SEE SHEET 23/67.

DESIGN AGENCY  
**PARSONS BRINCKERHOFF**  
QUADE & DOUGLAS, INC.  
614 W. SUPERIOR AVE., SUITE 400  
CLEVELAND, OHIO 44113

DATE: 6-19-08  
REVIEWED: RJO  
DRAWN: DCP  
DESIGNED: ZM  
CHECKED: JOZ

STRUCTURE FILE NUMBER: 4300572(L) 4300602(R)

**FORWARD ABUTMENT PLAN & ELEVATION III**  
BRIDGE NO. LAK-2-0400 L&R  
STATE ROUTE 2 OVER VINE STREET

**LAK-2-3.32**  
PID No. 13486

26/67

1351  
1679