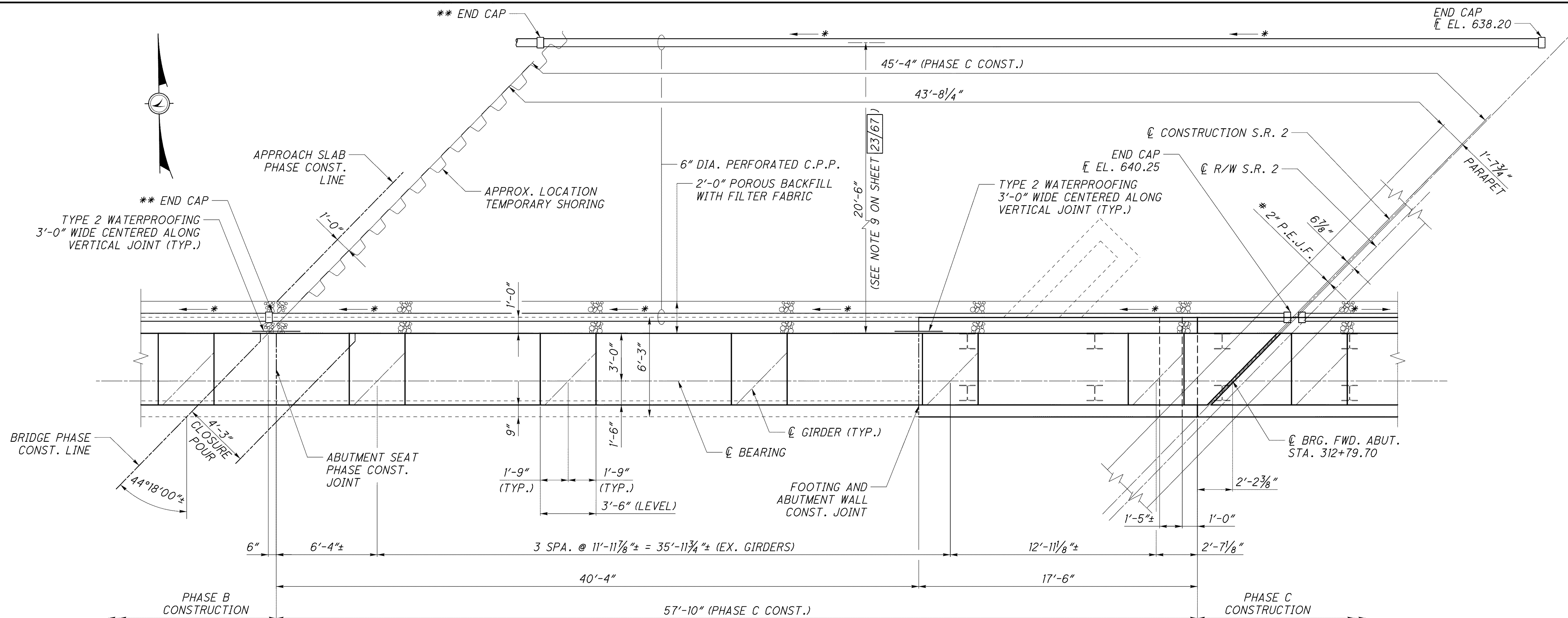
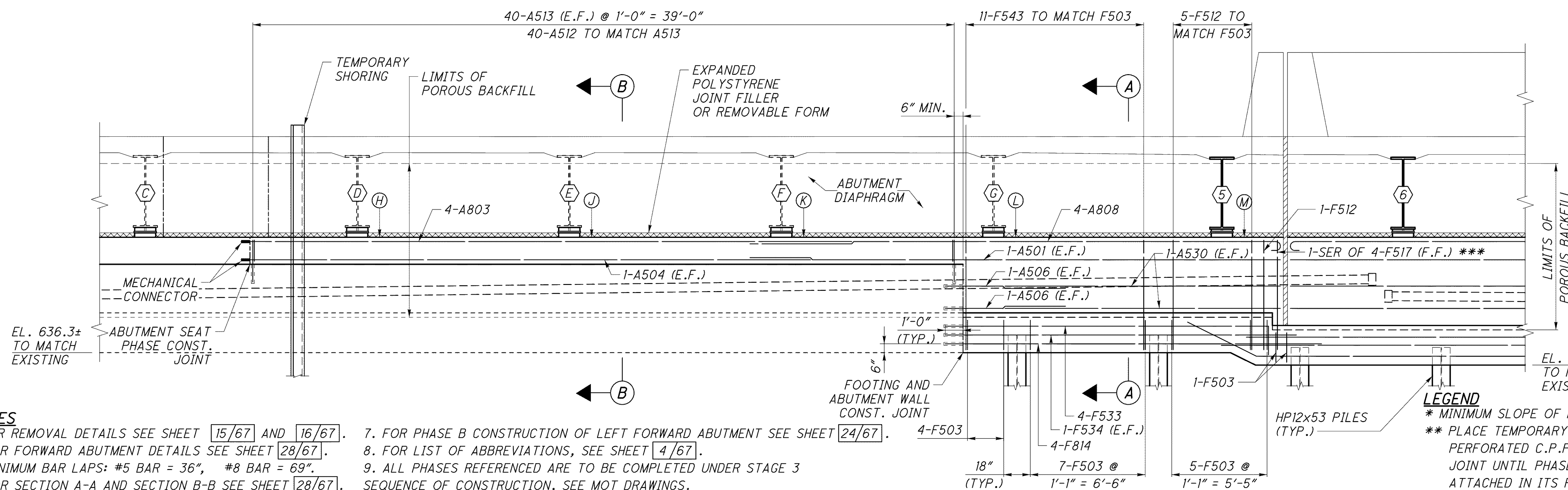


j:\LAK\13486\bridge\LAK002_0400C\sheets\02_0400CAF002.dgn 0.3-JUL-2008 1:41PM lintn



PLAN
(LEFT FORWARD ABUTMENT)



ELEVATION
(LEFT FORWARD ABUTMENT)

ELEVATION TABLE	
H	642.98
J	643.05
K	642.80
L	642.52
M	642.71

- NOTES**
1. FOR REMOVAL DETAILS SEE SHEET [15/67] AND [16/67].
 2. FOR FORWARD ABUTMENT DETAILS SEE SHEET [28/67].
 3. MINIMUM BAR LAPS: #5 BAR = 36", #8 BAR = 69".
 4. FOR SECTION A-A AND SECTION B-B SEE SHEET [28/67].
 5. FOR ABUTMENT DIAPHRAGM DETAILS, SEE SHEET [51/67].
 6. ELEVATIONS ARE TAKEN ALONG CENTERLINE OF BEARING.

7. FOR PHASE B CONSTRUCTION OF LEFT FORWARD ABUTMENT SEE SHEET [24/67].
8. FOR LIST OF ABBREVIATIONS, SEE SHEET [4/67].
9. ALL PHASES REFERENCED ARE TO BE COMPLETED UNDER STAGE 3 SEQUENCE OF CONSTRUCTION, SEE MOT DRAWINGS.
10. FOR SOIL REINFORCING LIMITS, SEE SHEET [23/67].

- LEGEND**
- * MINIMUM SLOPE OF PIPE IS 1/8 IN./FT.
 - ** PLACE TEMPORARY END CAP ON PERFORATED C.P.P. AT PHASE B CONSTRUCTION JOINT UNTIL PHASE C PERFORATED C.P.P. CAN BE ATTACHED IN ITS FINAL POSITION.
 - *** BAR TO BE FANNED.
 - # COST INCLUDED WITH SUBSTRUCTURE CONCRETE FOR PAYMENT.

FORWARD ABUTMENT PLAN & ELEVATION II

BRIDGE NO. LAK-2-0400 L&R
STATE ROUTE 2 OVER VINE STREET

DESIGNED	ZM	CHECKED	JOZ
DRAWN	DCP	REVISED	
REVIEWED	RJO	DATE	6-19-08
DESIGN AGENCY	PARSONS BRINCKERHOFF QUADE & DOUGLAS, INC. 614 W. SUPERIOR AVE., SUITE 400 CLEVELAND, OHIO 44113		
STRUCTURE FILE NUMBER	4300572(L) 4300602(R)		

LAK-2-3.32
PID No. 13486

25/67

1350
1679