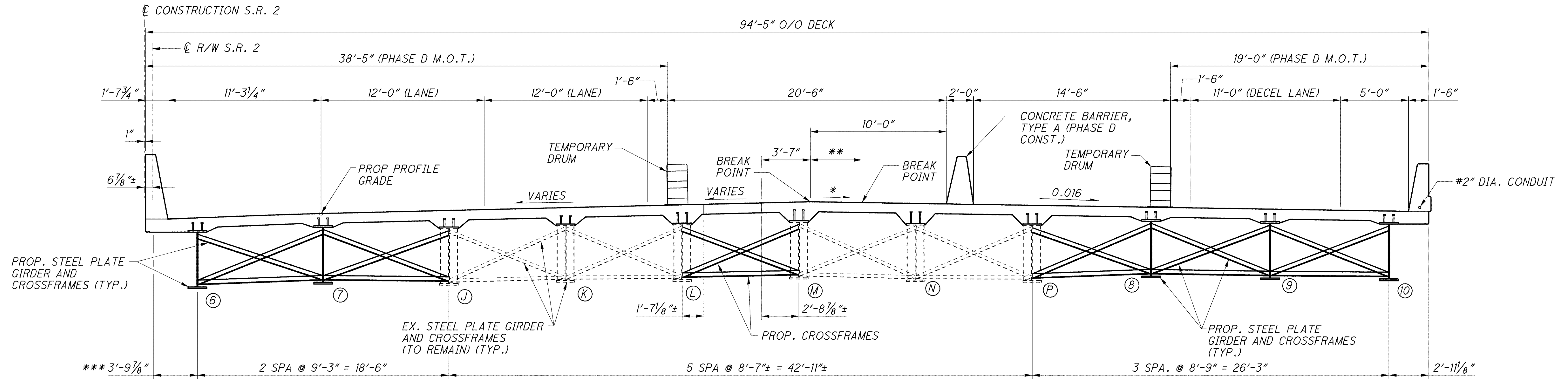


j:\LAK\13486\bridge\LAK002_0400C\sheets\02_0400CPC006.dgn 03-JUL-2008 1:38PM lintn



PHASE D CONSTRUCTION

(RIGHT STRUCTURE)

PHASE D MAINTENANCE OF TRAFFIC

- * VARIES FROM 0.014 AT STA. 311+03.03 TO 0.016 AT STA. 311+06.68
- ** VARIES FROM 0'-0" AT STA. 311+03.03 TO 3'-8 7/8" AT 311+06.68
- *** VARIES FROM 3'-10 3/8" AT STA. 310+56.86 TO 3'-9 7/8" AT 310+79.71
- # FULL LENGTH OF BRIDGE

NOTE

1. FOR LIST OF ABBREVIATIONS, SEE SHEET 4/67.
2. ALL PHASES REFERENCED ARE TO BE COMPLETED UNDER STAGE 3 SEQUENCE OF CONSTRUCTION, SEE MOT DRAWINGS.

PHASE D BRIDGE CONSTRUCTION (RIGHT BRIDGE)

1. PLACE TYPE A CONCRETE BARRIER.
2. REMOVE PHASE D MOT.

<p>LAK-2-3.32 PID 13486</p>	<p>PHASED CONSTRUCTION DETAILS VI BRIDGE NO. LAK-2-0400 L&R STATE ROUTE 2 OVER VINE STREET</p>	<p>DESIGNED: BMG CHECKED: PWP</p>	<p>DRAWN: NAL REVISED:</p>	<p>REVIEWED: RJO STRUCTURE FILE NUMBER: 4300572(L) 4300602(R)</p>	<p>DATE: 6-19-08 RJO</p>	<p>DESIGN AGENCY: PARSONS BRINCKERHOFF OUADE & DOUGLAS, INC. 614 W. SUPERIOR AVE., SUITE 400 CLEVELAND, OHIO 44113</p>
---	---	---------------------------------------	--------------------------------	---	------------------------------	---