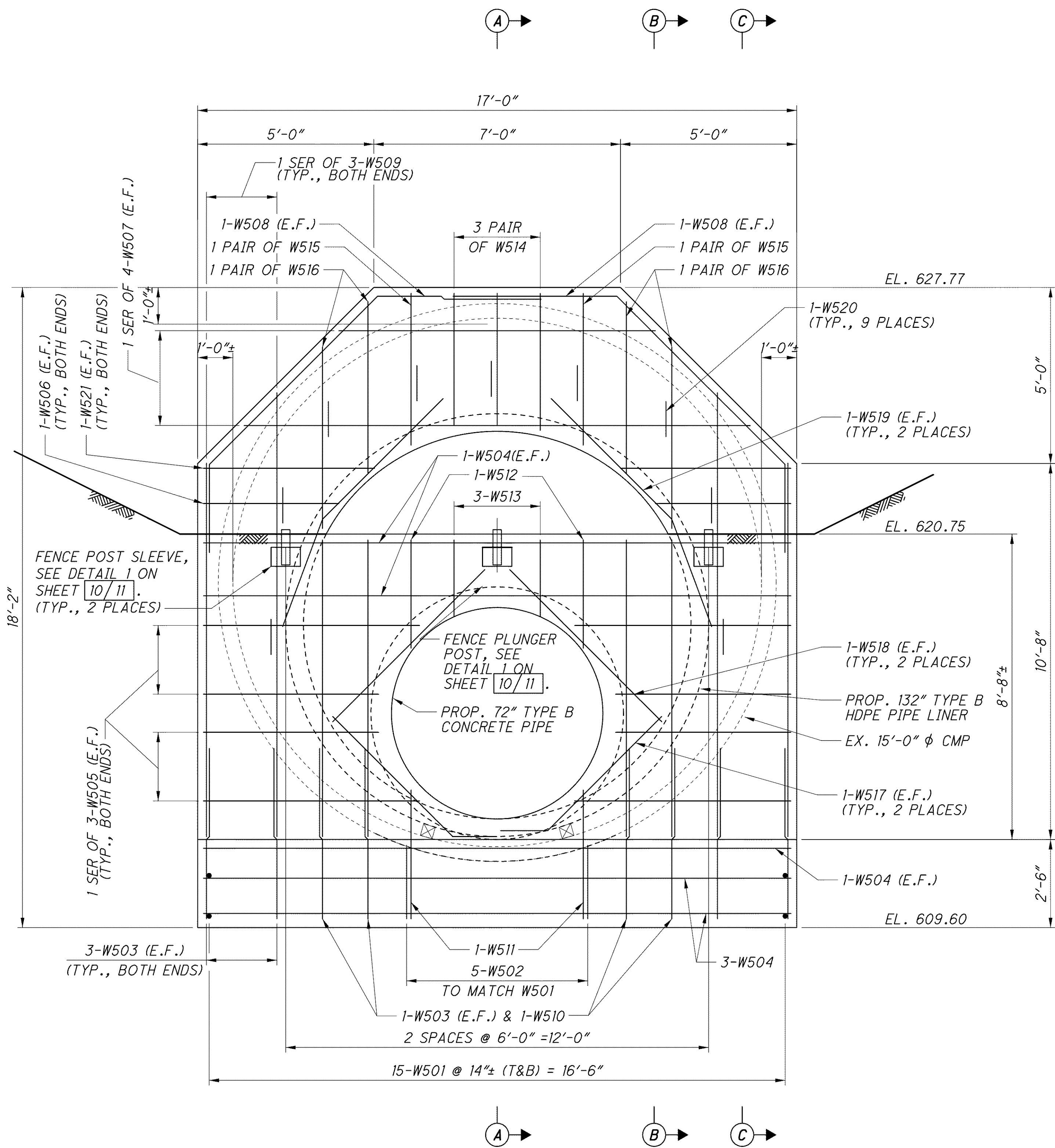


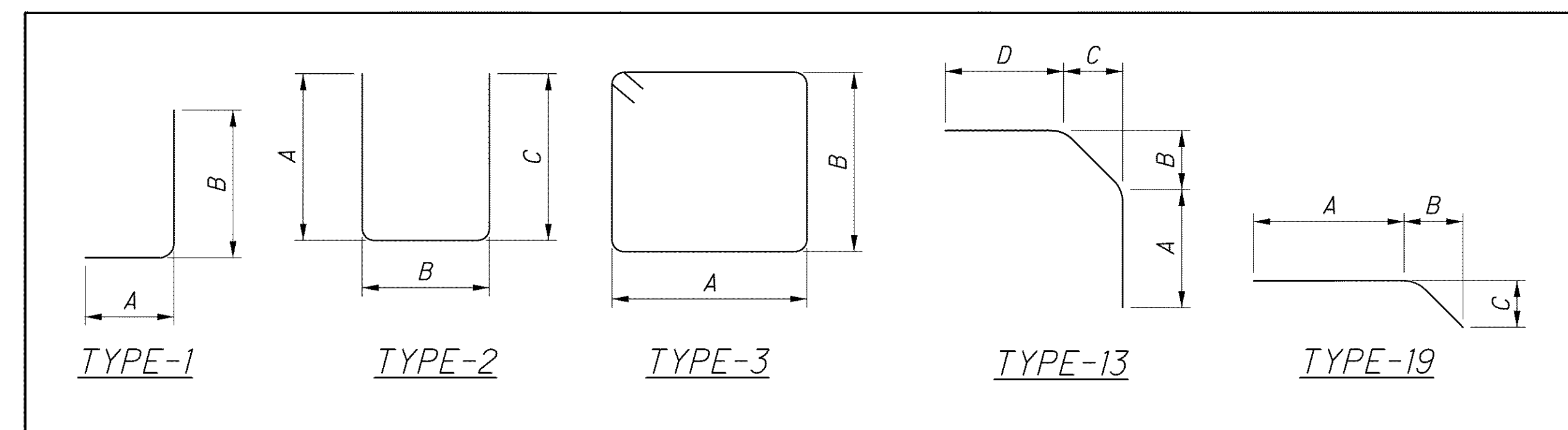
j:\LAK\13486\bridge\LAK002\_0395c\sheets\02\_0395cmd005.dgn 03-JUL-2008 1:37PM lintn



**HEADWALL ELEVATION**  
132" POLYETHYLENE  
LINER PIPE INLET  
(LOOKING NORTH)

REINFORCING SCHEDULE													
MARK	STAGE 3 PHASE B	STAGE 3 PHASE C	TOTAL REQ'D	LENGTH	TYPE	DIMENSIONS						WEIGHT LBS.	
						A	B	C	D	E	RAD		INC
<b>* HEADWALL</b>													
W501	30		30	2'-6"	STR.								78
W502	5		5	5'-7"	2	2'-0"	1'-10"	2'-0"					29
W503	20		20	5'-5"	1	0'-10"	4'-9"						113
W504	12		12	16'-6"	STR.								207
	8		8	5'-0"									
W505	SER.		SER.	TO	STR.						0'-6"		138
	3		3	6'-0"									
W506	4		4	3'-10"	STR.								16
	2		2	8'-11"									
W507	SER.		SER.	TO	STR.						1'-9 5/8"		97
	4		4	14'-4"									
W508	4		4	13'-11"	13	2'-6"	4'-10"	4'-10"	4'-8"				58
	2		2	22'-4"		10'-7"		10'-7"					
W509	SER.		SER.	TO	2	TO	1'-5"	TO			2'-0"		152
	3		3	26'-4"		12'-7"		12'-7"					
W510	4		4	18'-0"	2	8'-5"	1'-5"	8'-5"					75
W511	2		2	8'-3"	2	3'-8"	1'-2"	3'-8"					17
W512	2		2	8'-10"	3	1'-5"	2'-9"						18
W513	3		3	6'-8"	3	1'-5"	1'-8"						21
W514	6		6	8'-8"	2	3'-9"	1'-5"	3'-9"					54
W515	4		4	9'-8"	2	4'-3"	1'-5"	4'-3"					40
W516	8		8	10'-10"	2	4'-10"	1'-5"	4'-10"					90
W517	4		4	6'-0"	19	4'-8"	1'-0"	1'-0"					25
W518	4		4	6'-2"	STR.								26
W519	4		4	8'-1"	19	4'-10"	3'-0"	1'-4"					34
W520	9		9	3'-3"	1	0'-10"	2'-6"						31
W521	4		4	4'-10"	STR.								20
<b>HEADWALL SUB-TOTAL</b>											<b>1,339</b>		

\* FOR INFORMATION ONLY, COST OF HEADWALL REINFORCING INCLUDED WITH ITEM 602, CONCRETE MASONRY FOR PAYMENT.



**ABBREVIATIONS:**  
RAD. = RADIUS  
INC. = INCREMENT  
LBS. = POUNDS  
STR. = STRAIGHT

**NOTES:**  
1. ALL BARS SHALL BE EPOXY COATED.  
2. FOR SECTIONS A-A, B-B, AND C-C SEE SHEET 10/11.  
3. FOR ABBREVIATION LIST, SEE SHEET 2/11.  
4. MINIMUM BAR LAP: #5 BAR = 29"