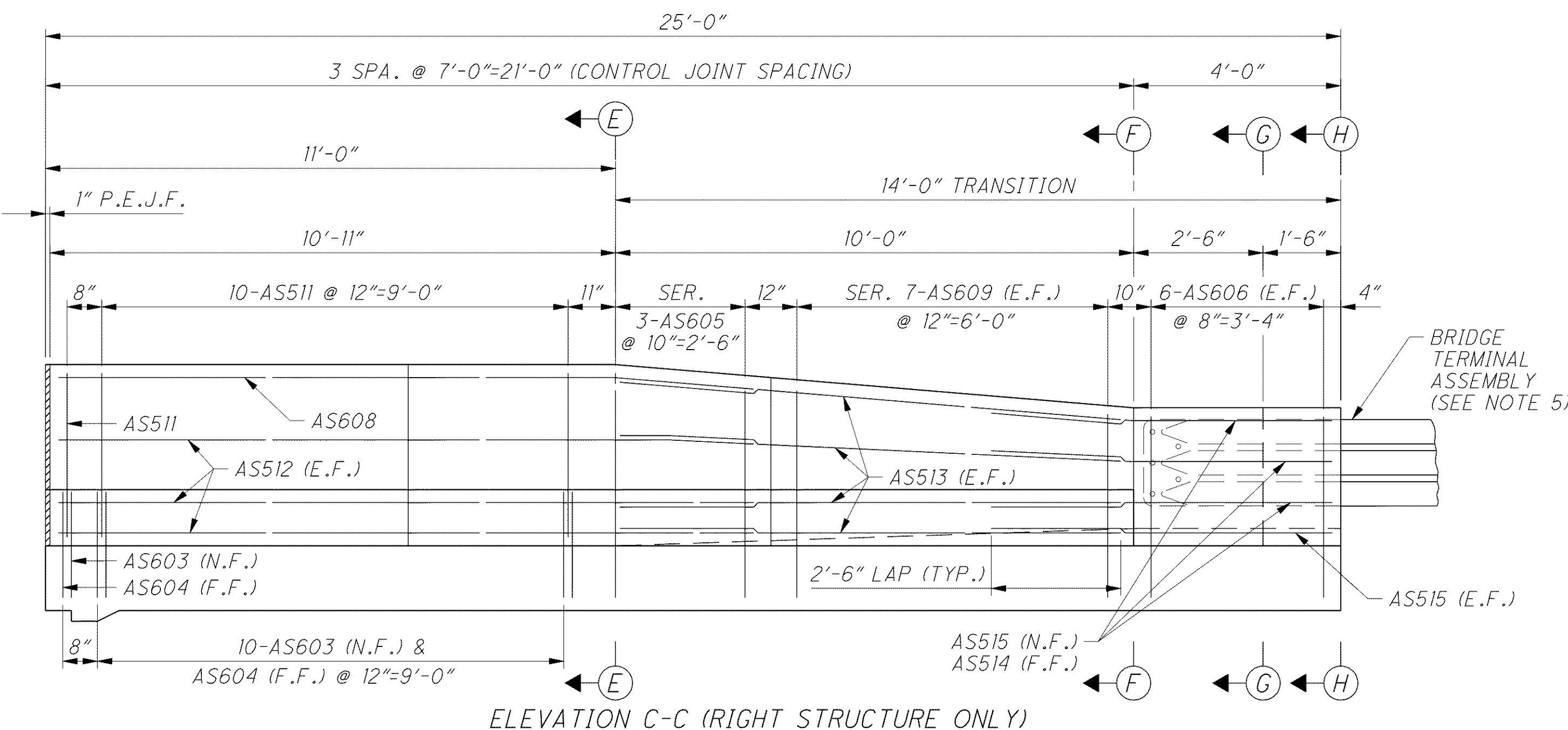
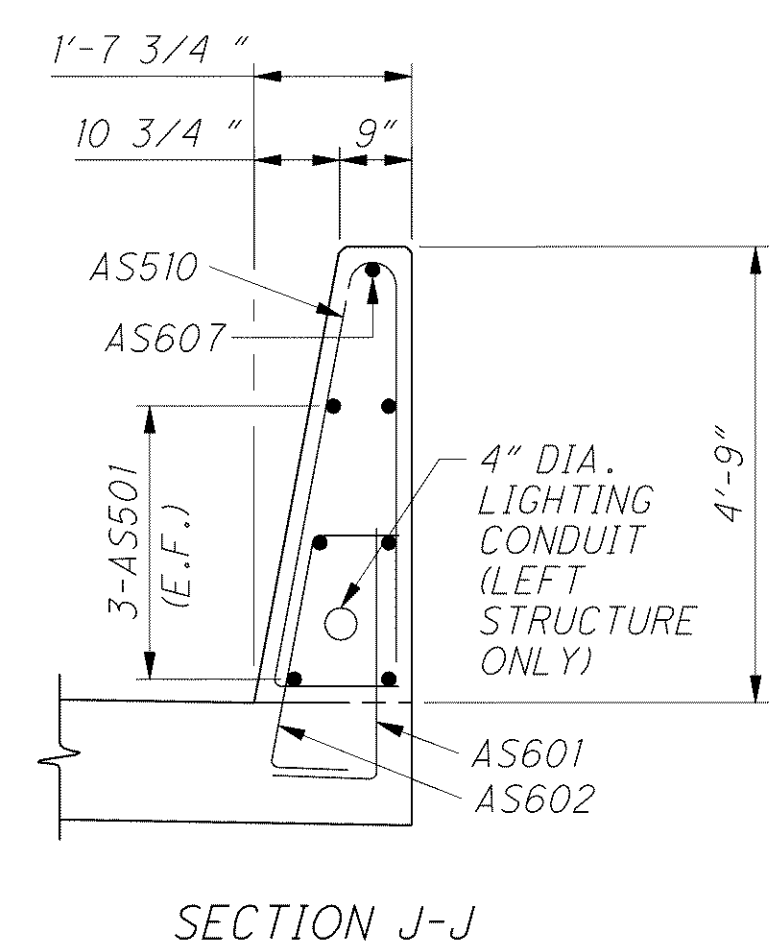
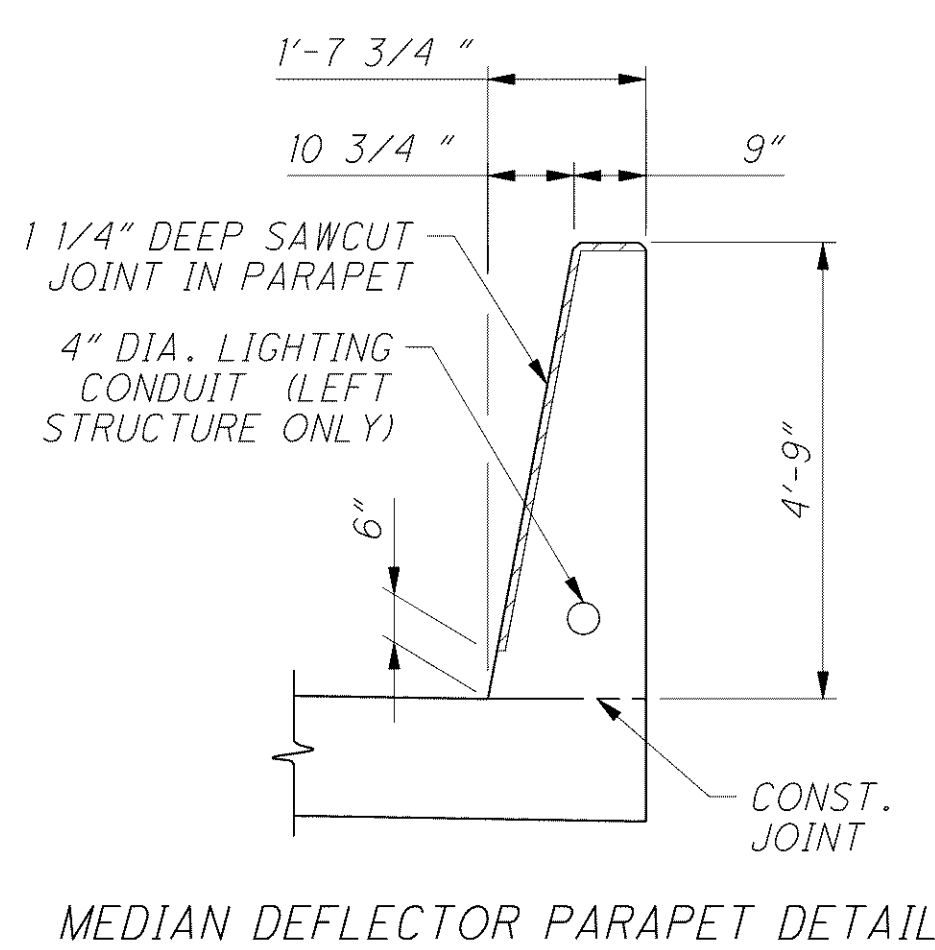
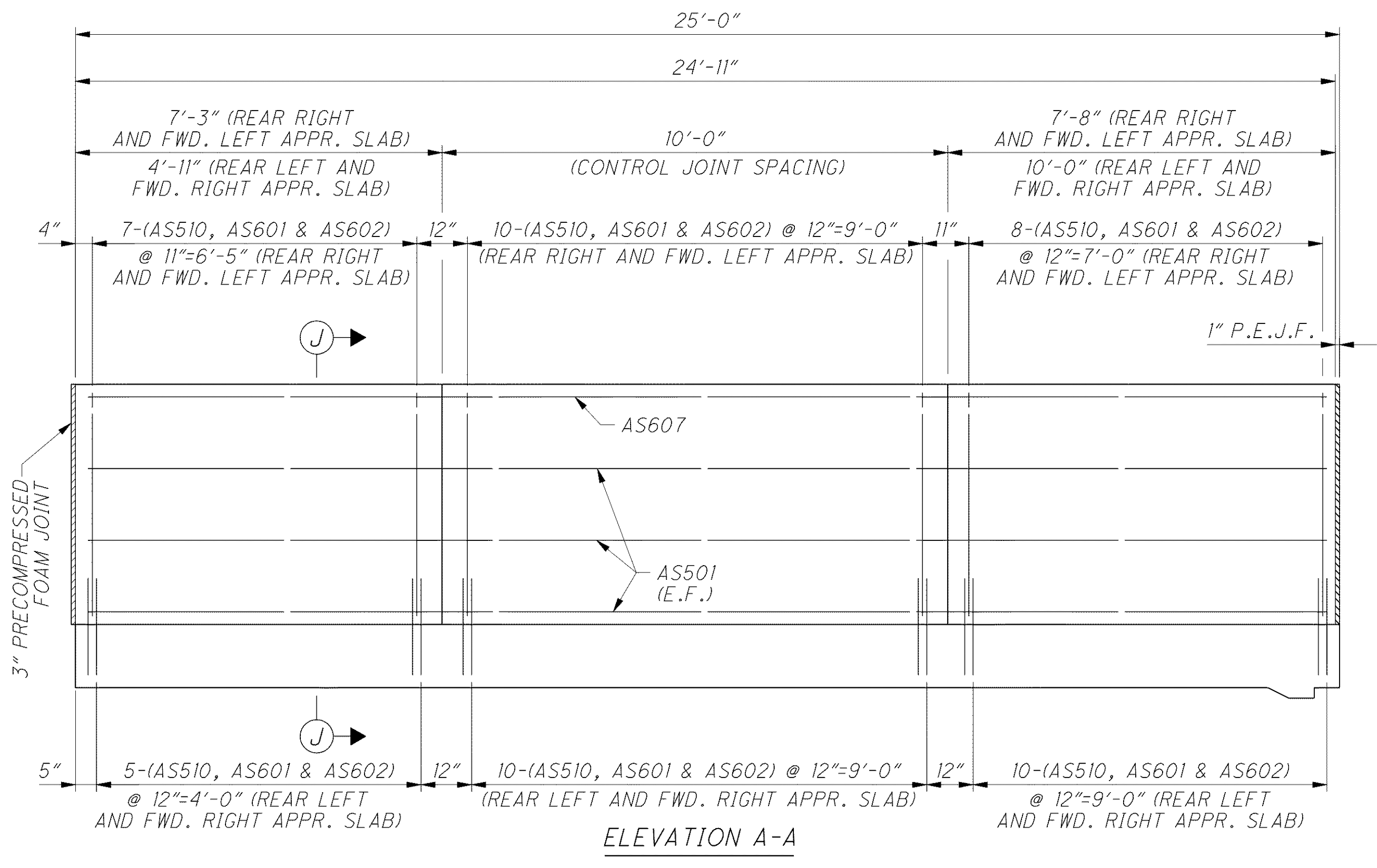
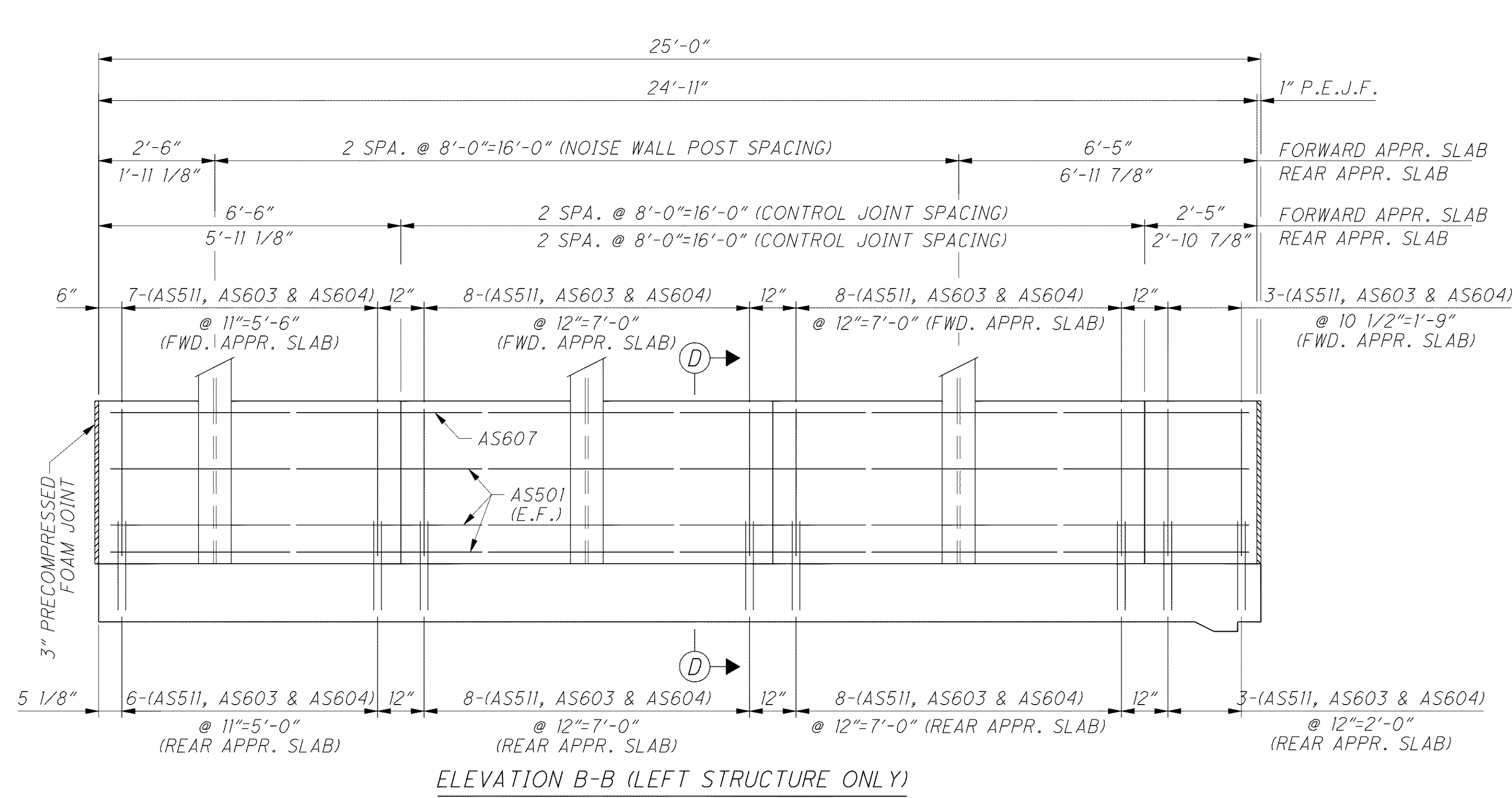


C:\Project\CV000048A001\Drawing\LAK\13486\bridge\LAK002_0363\0363\0363.dgn 6/26/2008 8:23:47 AM troxberry



- NOTES**
1. MINIMUM BAR LAPS:
#5 BARS = 42"
 2. FOR ADDITIONAL SINGLE SLOPE DEFLECTOR PARAPET TYPE SEE O.D.O.T. STANDARD DRAWING SBR-1-91.
 3. FOR ADDITIONAL APPROACH SLAB DETAILS SEE O.D.O.T. STANDARD DRAWING AS-1-81.
 4. FOR ADDITIONAL APPROACH SLAB DETAILS SEE SHEETS [35/44] AND [36/44].
 5. FOR BRIDGE TERMINAL ASSEMBLIES SEE ROADWAY STANDARD DRAWINGS GR-3.1 AND GR-3.2.
 6. FOR PARAPET RECESS DETAILS ON THE RIGHT STRUCTURE SEE SHEET [29/44].
 7. FOR NOISE WALL DETAILS SEE SHEET 976 OF 1679. INCLUDE WITH ROADWAY QUANTITIES FOR PAYMENT.

