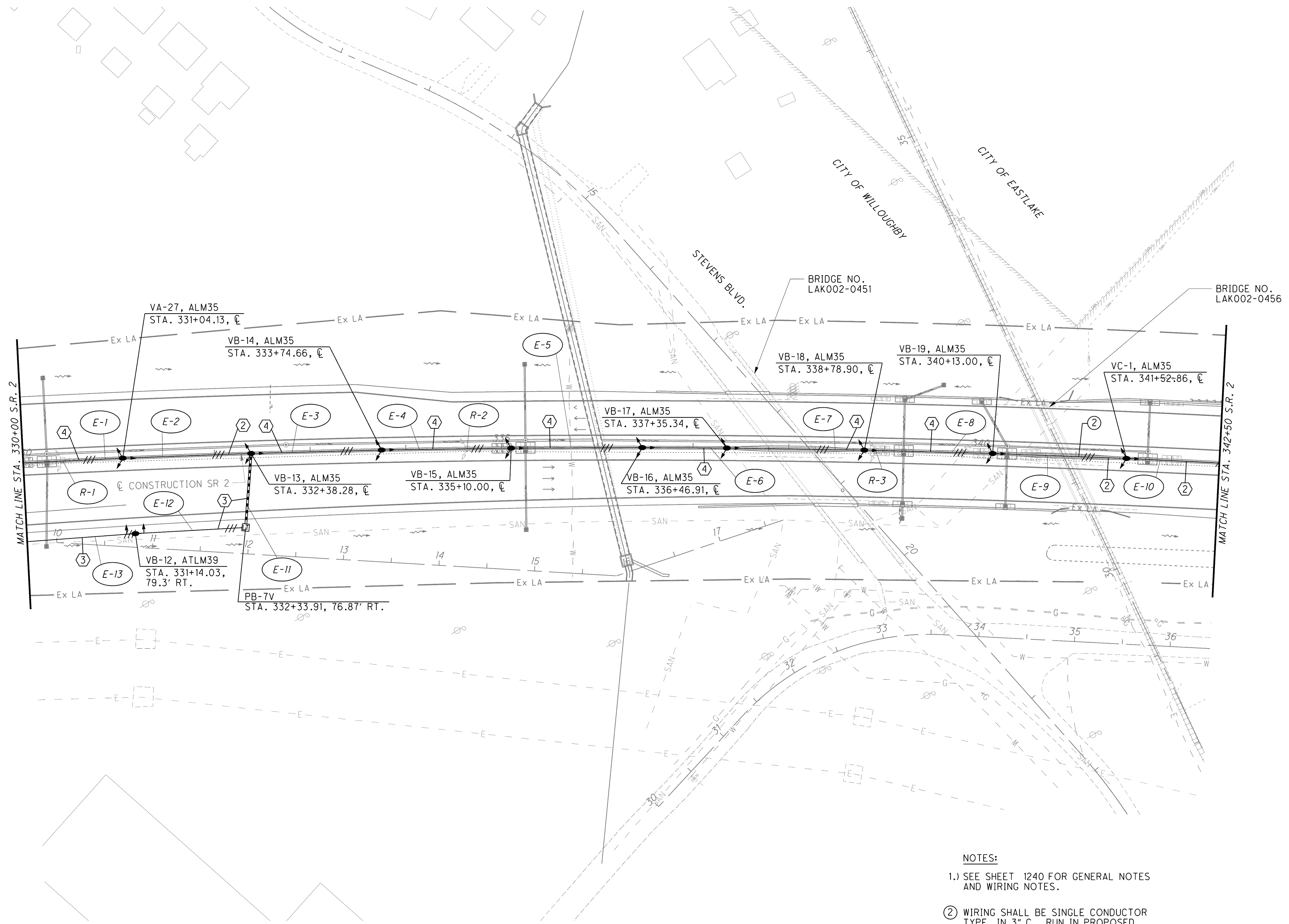


g:\project\lak\13486\lighting\sheets\13486LP006.dgn 7/11/2008 8:48:41 AM dshoner



NOTES:

- 1.) SEE SHEET 1240 FOR GENERAL NOTES AND WIRING NOTES.
- ② WIRING SHALL BE SINGLE CONDUCTOR TYPE, IN 3" C. RUN IN PROPOSED SHOULDER ALONGSIDE MEDIAN BARRIER, TO BARRIER JUNCTION BOXES.

CALCULATED
JMS
CHECKED
ZFB

0 50 100
25
HORIZONTAL
SCALE IN FEET

LIGHTING PLAN
STA. 330+00 TO STA. 342+50

LAK-2-3.32

1245
1679