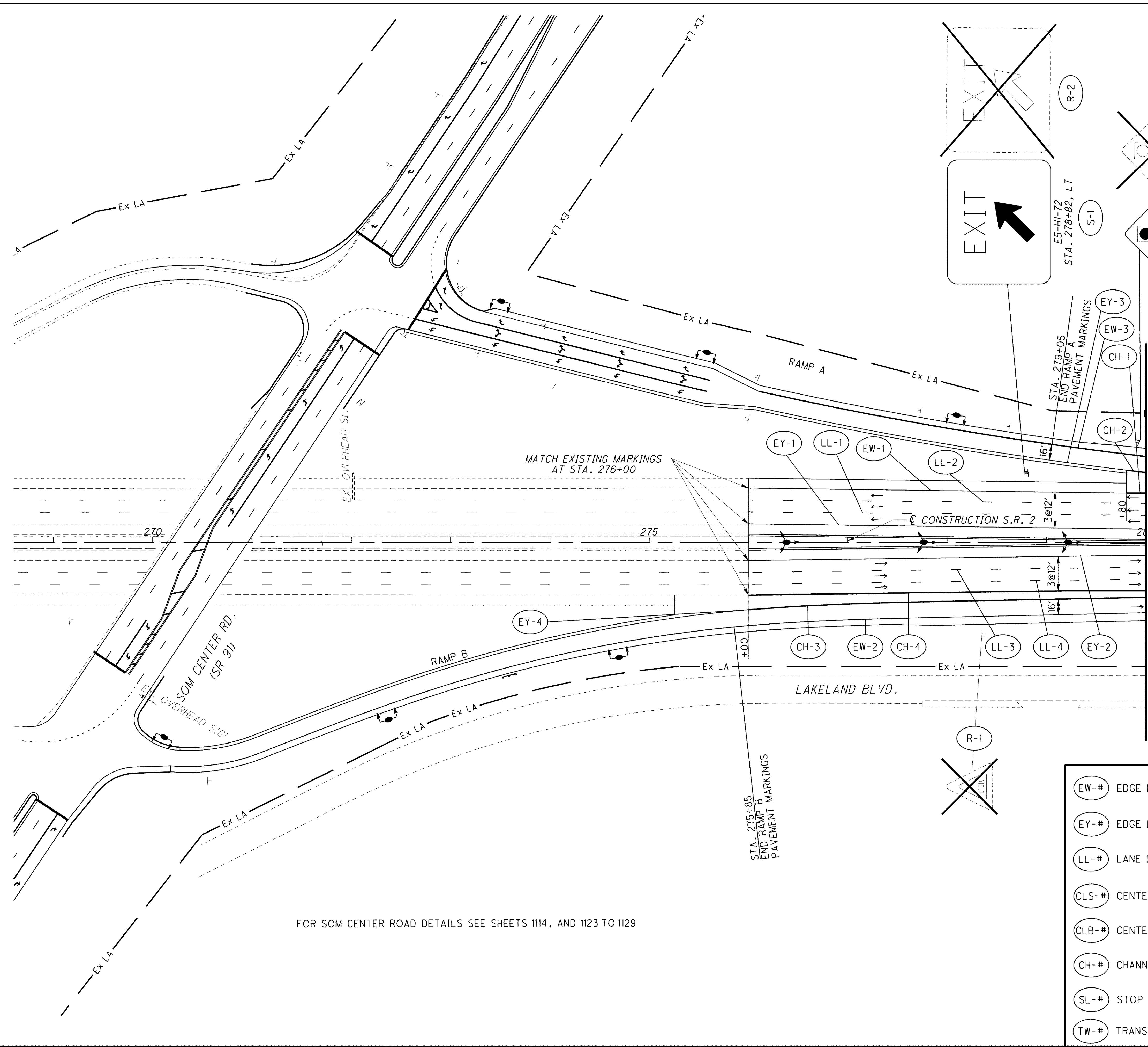


g:\project\lak\13486\traffic\sheets\13486TP01.dgn 6/23/2008 10:39:10 AM jmodera



FOR SOM CENTER ROAD DETAILS SEE SHEETS 1114, AND 1123 TO 1129

**LEGEND**

- OVERHEAD TRUSS SUPPORT
- OVERHEAD CANTILIVER SUPPORT
- 2 POST GROUND MOUNTED SIGN SUPPORT
- 1 POST GROUND MOUNTED SIGN SUPPORT
- EXISTING SIGN TO REMAIN
- EXISTING SIGN AND POST OR SUPPORT REMOVED
- PROPOSED SIGN
- R1-2-36
- LOCAL SIGN
- FINAL LOCATION TO BE DETERMINED
- EXISTING SIGN AND SUPPORT REMOVAL
- PROPOSED SIGN AND SUPPORT
- PROPOSED OVERHEAD SIGN AND SUPPORT

- EDGE LINE (WHITE)
- EDGE LINE (YELLOW)
- LANE LINE
- CENTER LINE - DOUBLE SOLID
- CENTER LINE - DOUBLE/BROKEN
- CHANNELIZING LINE
- STOP LINE
- TRANSVERSE LINE (WHITE)
- CROSSWALK LINE
- TRANSVERSE LINE (YELLOW)
- ISLAND MARKING (YELLOW)
- BIKE SYMBOL MARKING, 72 INCH
- LANE ARROW
- WORD ON PAVEMENT, 44 INCH
- DOTTED LINE (WHITE)
- TWO WAY LEFT TURN SYMBOL (TWO LANE ARROW)

HORIZONTAL SCALE IN FEET

CALCULATED: JMM
   
 CHECKED: DRJ

**SIGNING AND PAVEMENT MARKING PLAN**

**S.R. 2 - STA. 276+00 TO STA. 280+00**