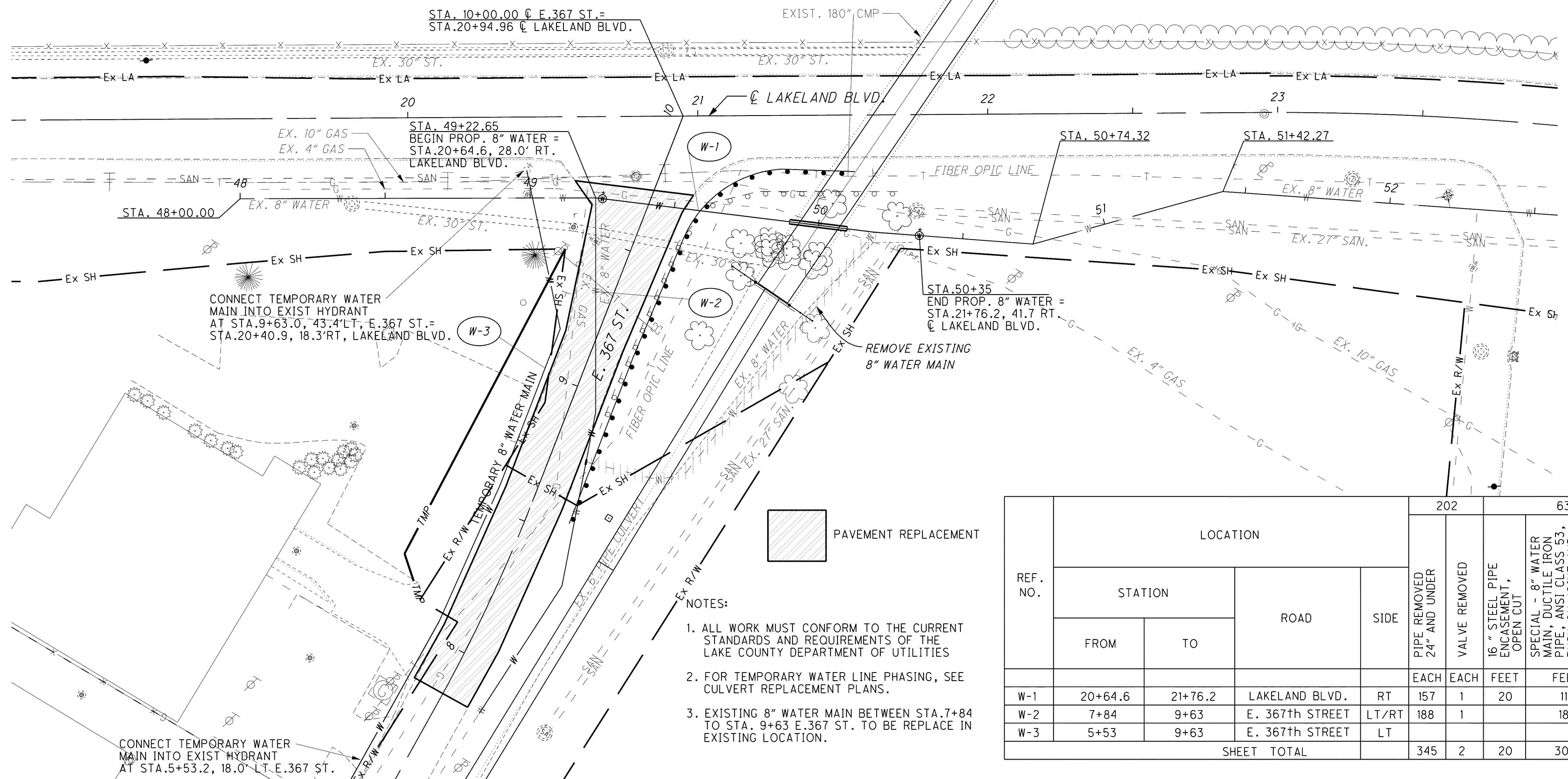


CALCULATED CAP CHECKED TAA

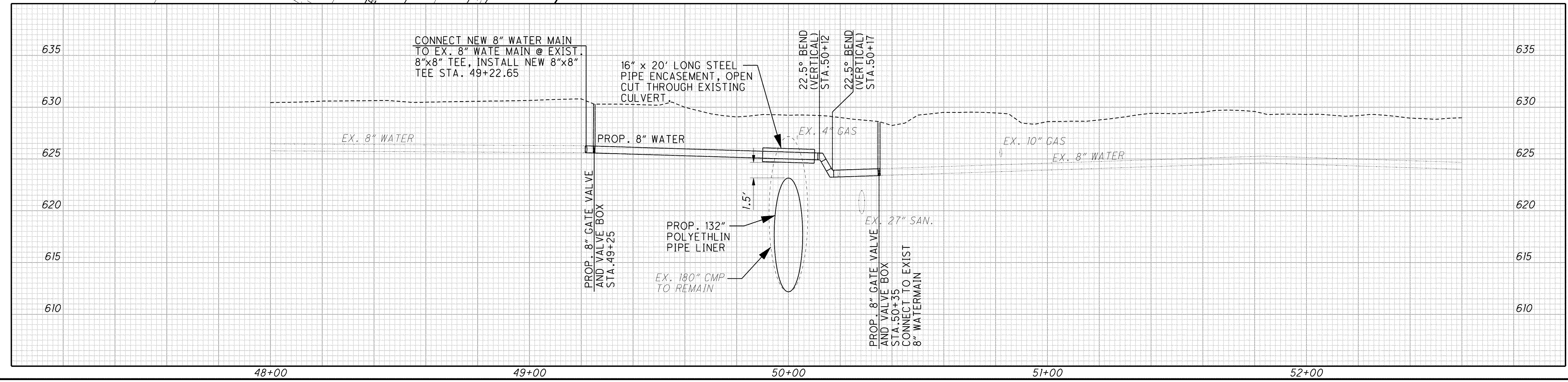
# WATER PLAN AND PROFILE LAKELAND BLVD.

## LAK-2-3.32

1033  
1679



REF. NO.	LOCATION				202		638		EACH	LUMP
	STATION		ROAD	SIDE	PIPE REMOVED 24" AND UNDER	VALVE REMOVED	16" STEEL PIPE ENCASEMENT, OPEN CUT	SPECIAL - 8" WATER MAIN, DUCTILE IRON PIPE, ANST CLASS 53, PUSH-ON JOINT AND CAST IRON MECHANICAL JOINT FITTINGS		
	FROM	TO								
W-1	20+64.6	21+76.2	LAKELAND BLVD.	RT	157	1	20	112	1	
W-2	7+84	9+63	E. 367th STREET	LT/RT	188	1		188	1	
W-3	5+53	9+63	E. 367th STREET	LT						1
SHEET TOTAL					345	2	20	300	2	1



C:\Project\lak\13486\utilities\sheets\13486UP003.dgn 6/26/2008 3:43:03 PM djozily