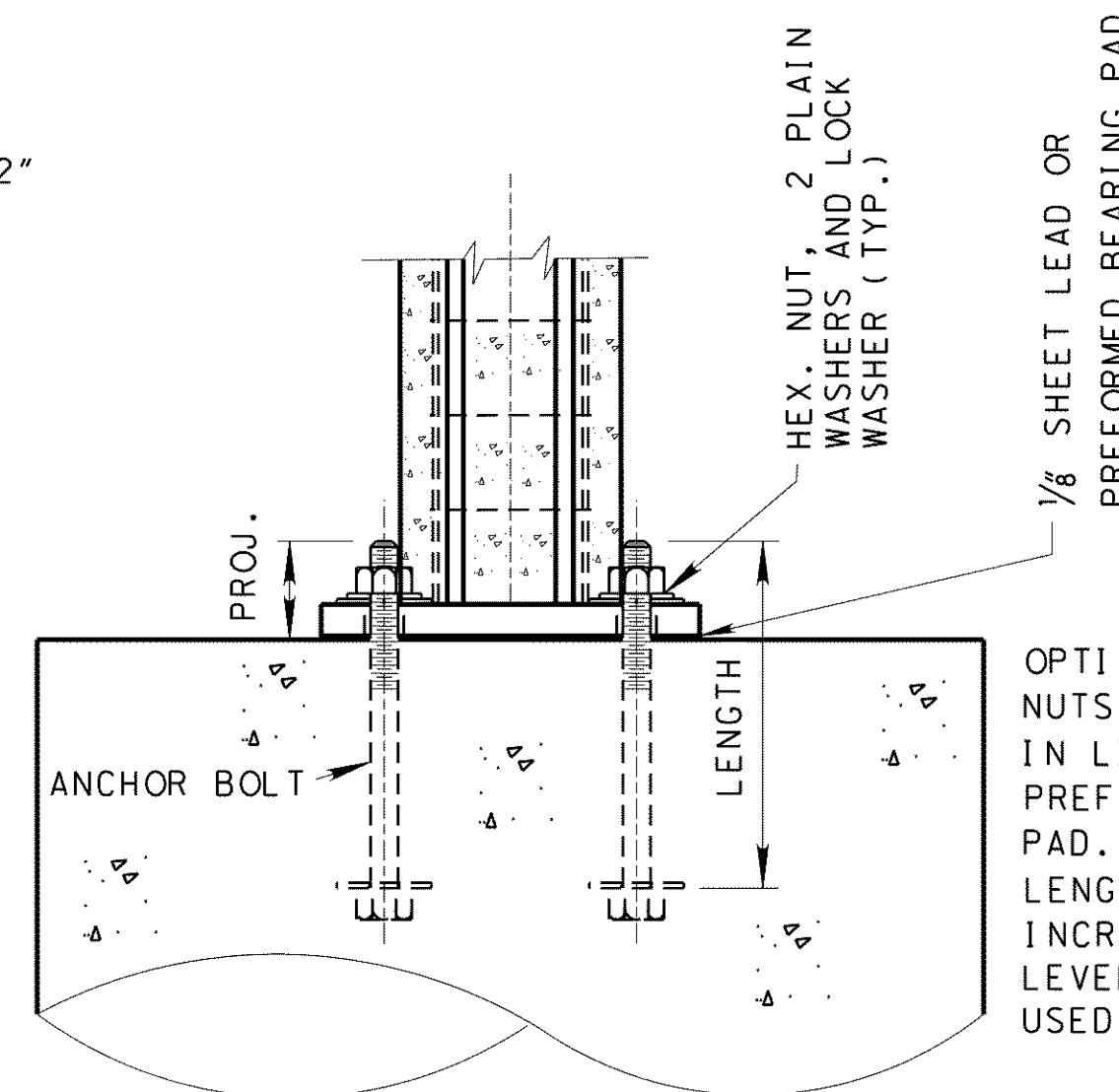


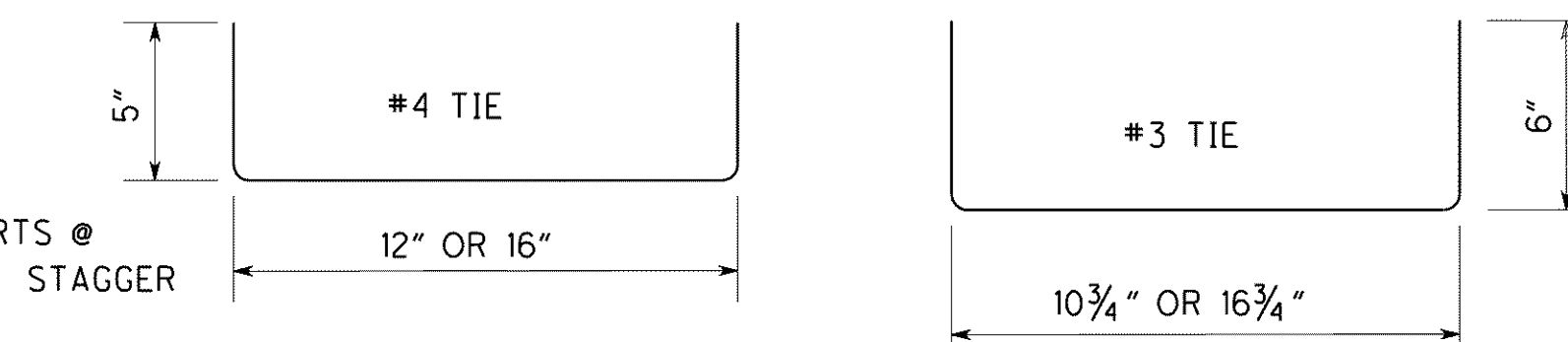
TYPICAL DRILLED SHAFT CROSS-SECTION



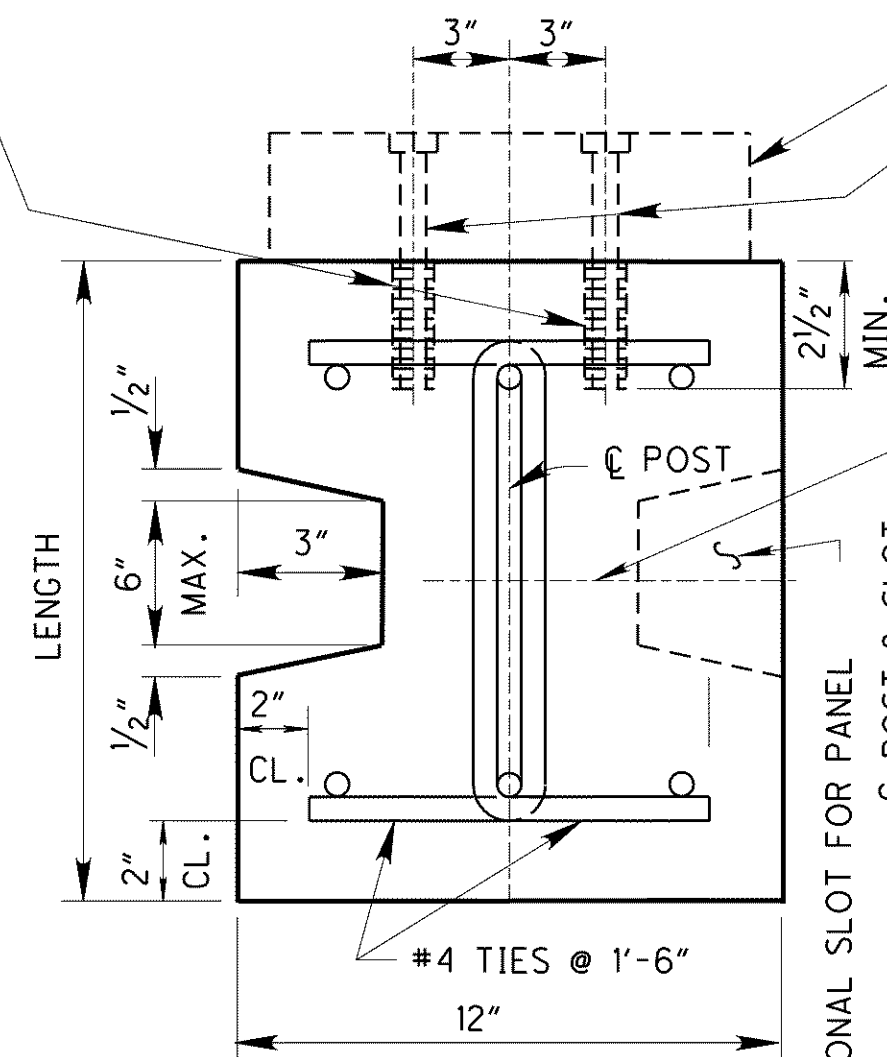
PARTIAL ELEVATION A-A
CONCRETE POST

OPTIONAL LEVELING NUTS MAY BE USED IN LIEU OF PREFORMED BEARING PAD. ANCHOR BOLT LENGTH SHALL BE INCREASED IF LEVELING NUTS ARE USED.

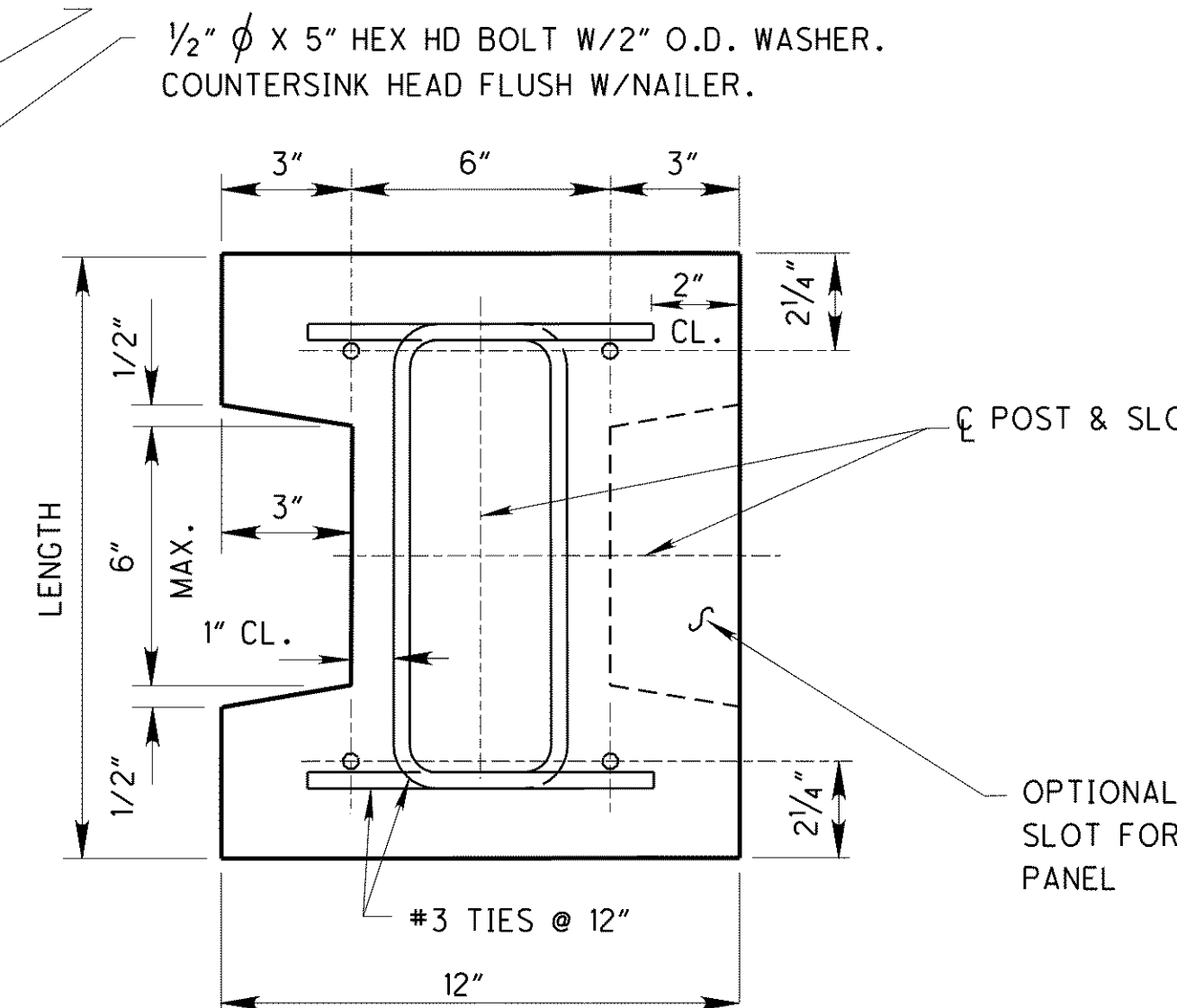
SINGLE FERRULE INSERTS @ 4'-0" C/C EACH ROW. STAGGER THE SPACING



OPTIONAL 3"x10" NAILER FULL HEIGHT OF PANEL. WALL SECTIONS SHALL BE FASTENED TO FACE OF POST.

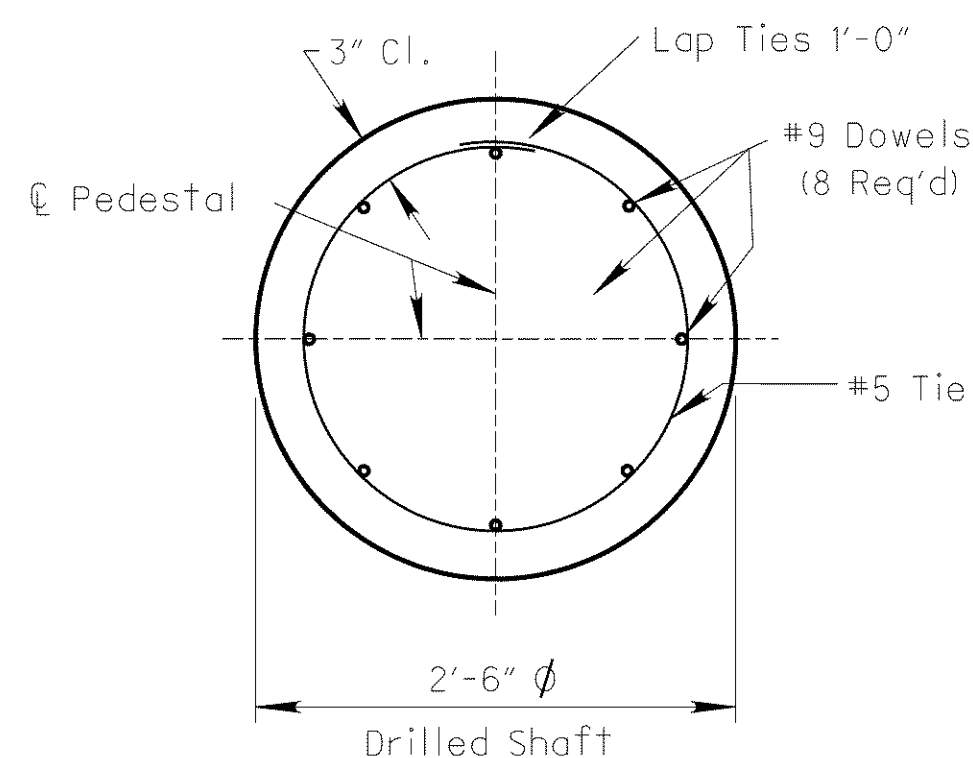


REINFORCED CONCRETE
(PRECAST)

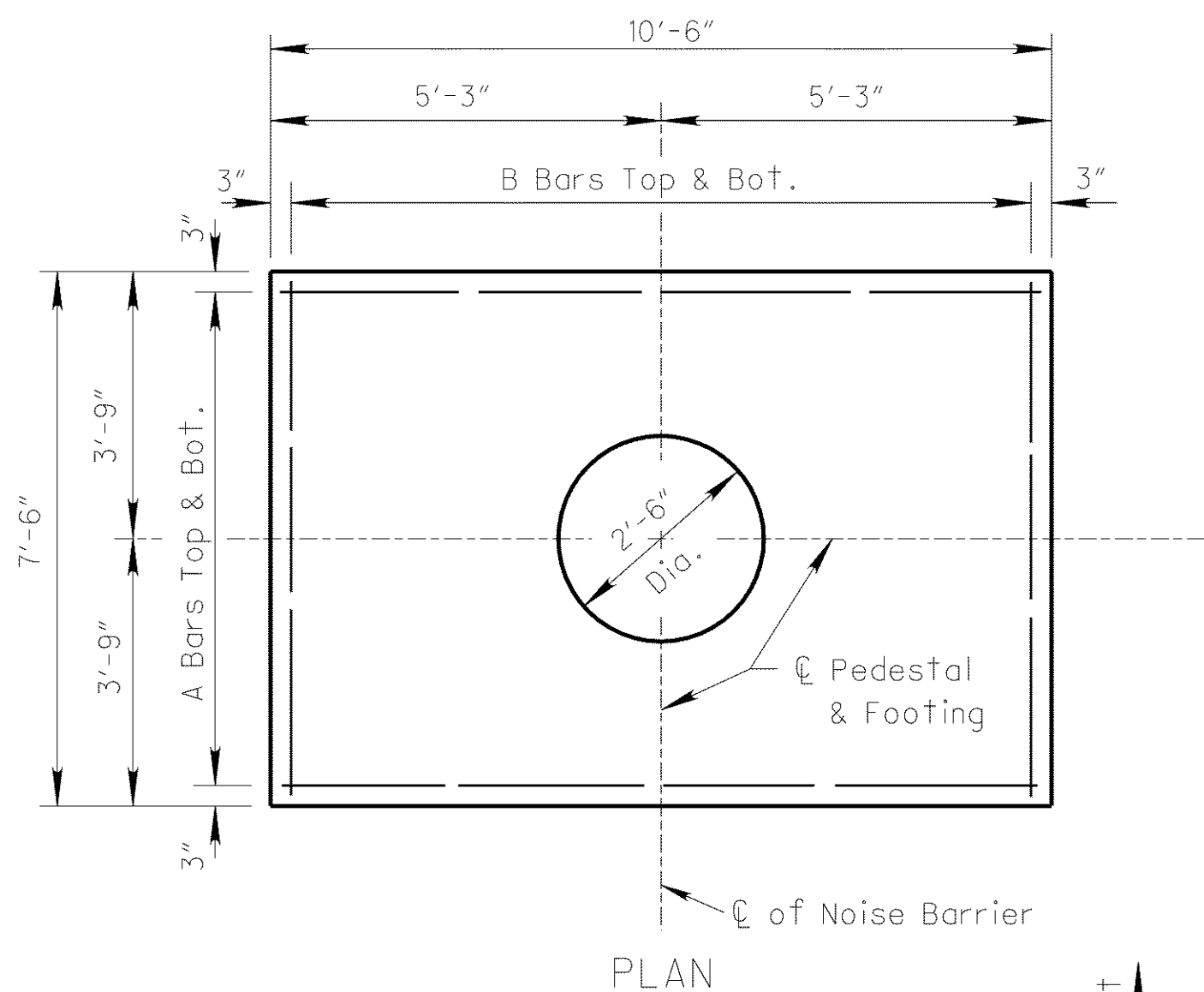


PRESTRESSED CONCRETE
(4-1/2" STRANDS)

LINE POST DETAILS



SECTION C-C

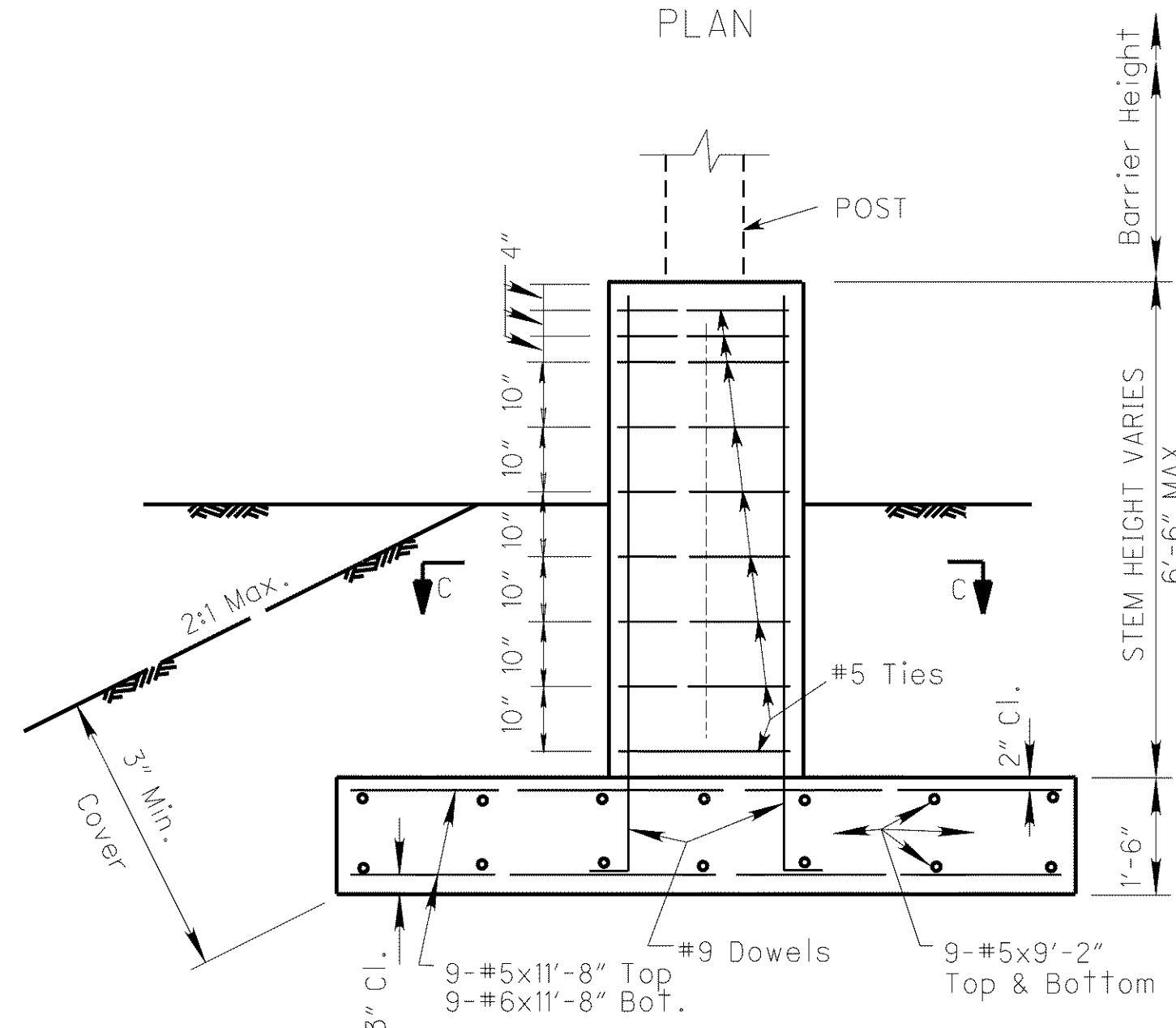


PLAN

SECTION C-C

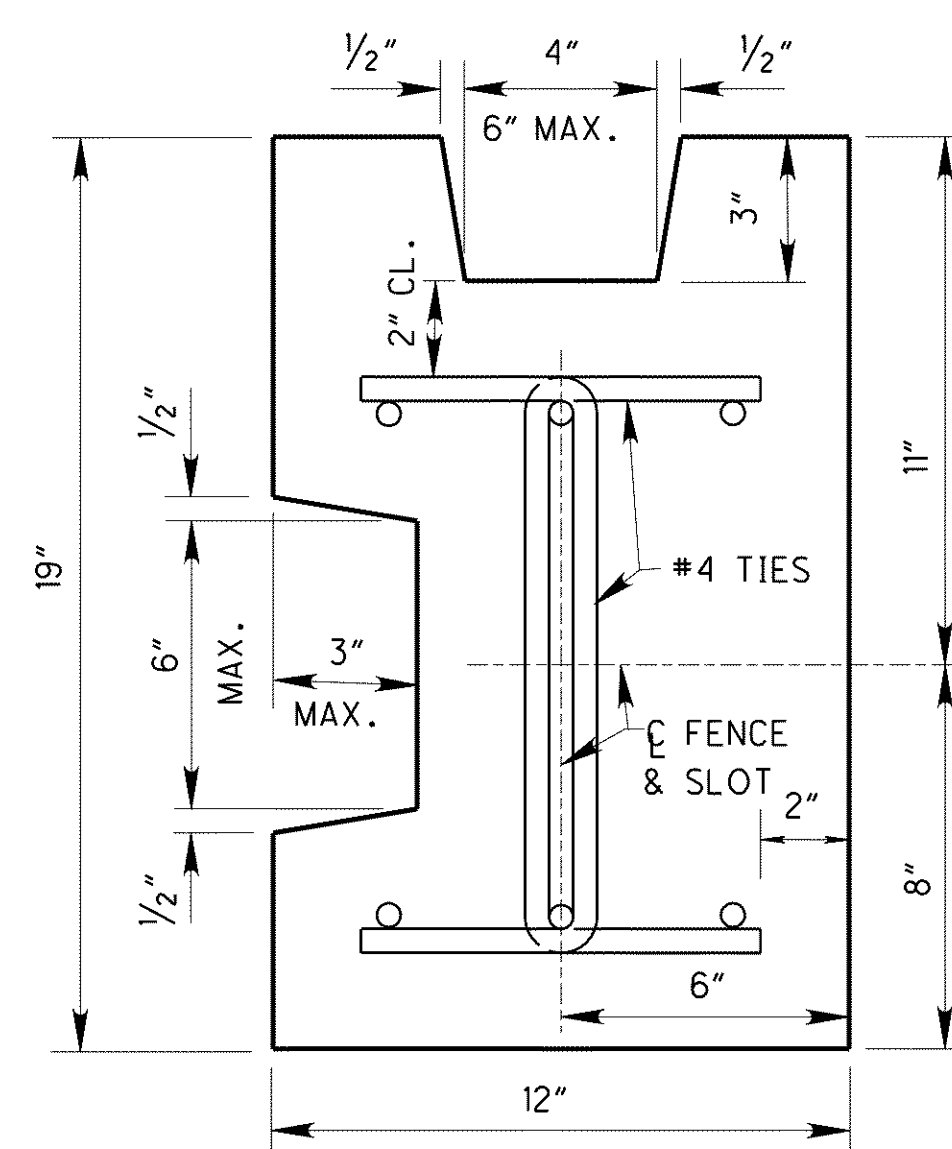
#9 DOWEL

Note: Soil should be able to handle a minimum allowable bearing pressure = 1.25 tons per sq. ft. for spread footing foundations

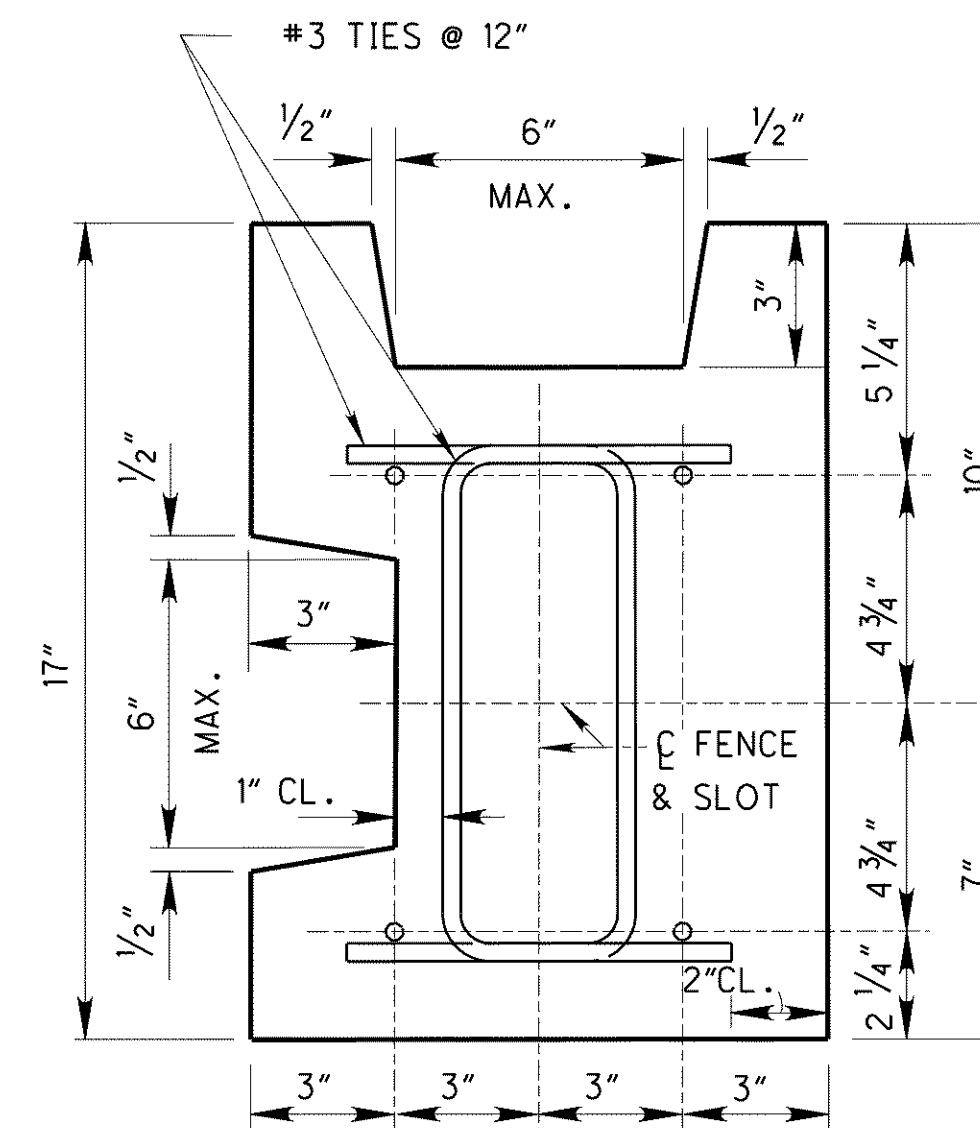


ELEVATION

SPREAD FOOTING FOUNDATION



REINFORCED CONCRETE
CORNER POST



PRESTRESSED CONCRETE
CORNER POST