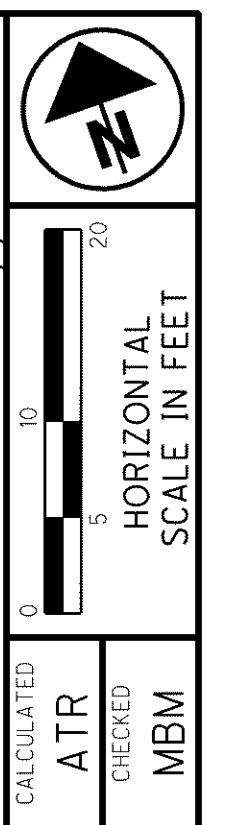
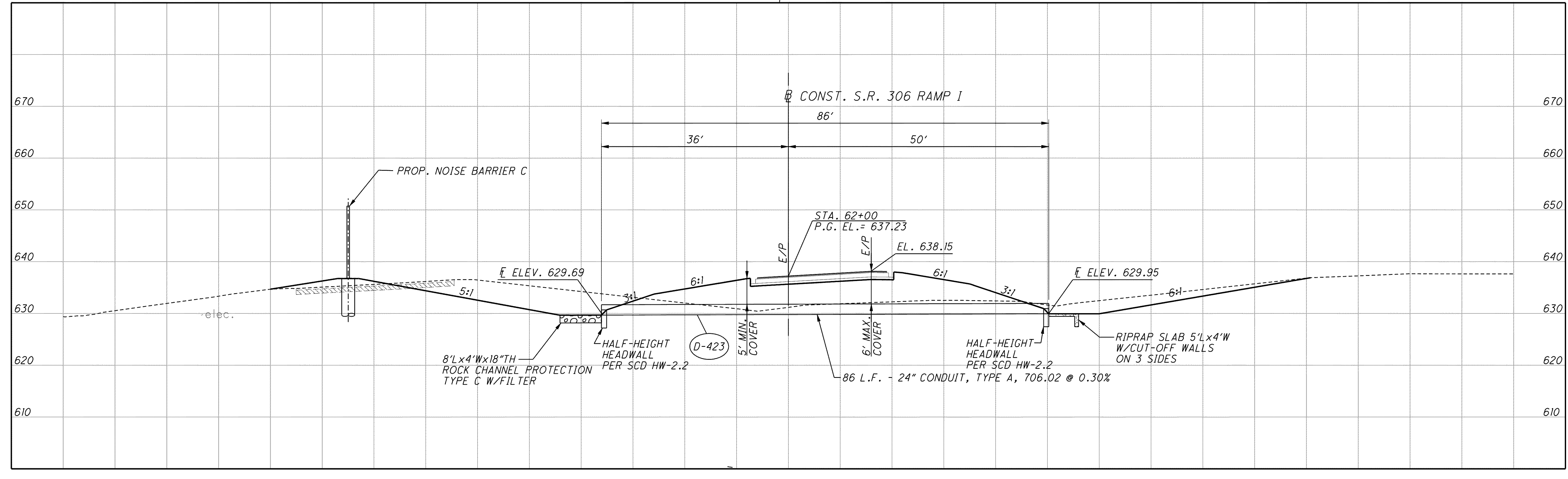
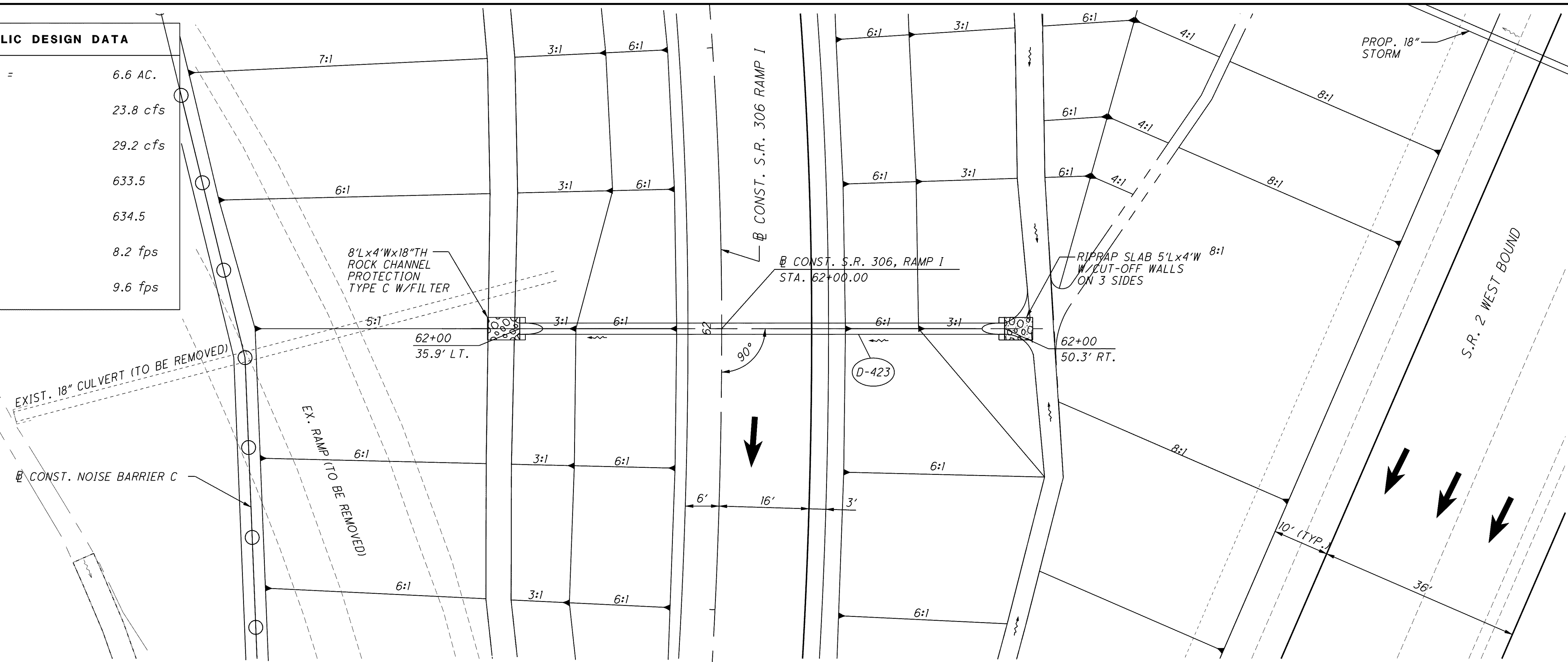


HYDRAULIC DESIGN DATA	
DRAINAGE AREA =	6.6 AC.
Q25 =	23.8 cfs
Q100 =	29.2 cfs
HWE25 =	633.5
HWE100 =	634.5
V25 =	8.2 fps
V100 =	9.6 fps



CALCULATED: ATR
 CHECKED: MBM

CULVERT DETAIL
S.R. 306 RAMP I STA. 62+00

LAK-2-3.32

870
 1679