



0 10 20 40
HORIZONTAL
SCALE IN FEET

CALCULATED JLM
CHECKED PSB

CULVERT DETAIL FOR LAK-2-0711
S.R. 2 AT STA. 476+04.14

LAK-2-3.32

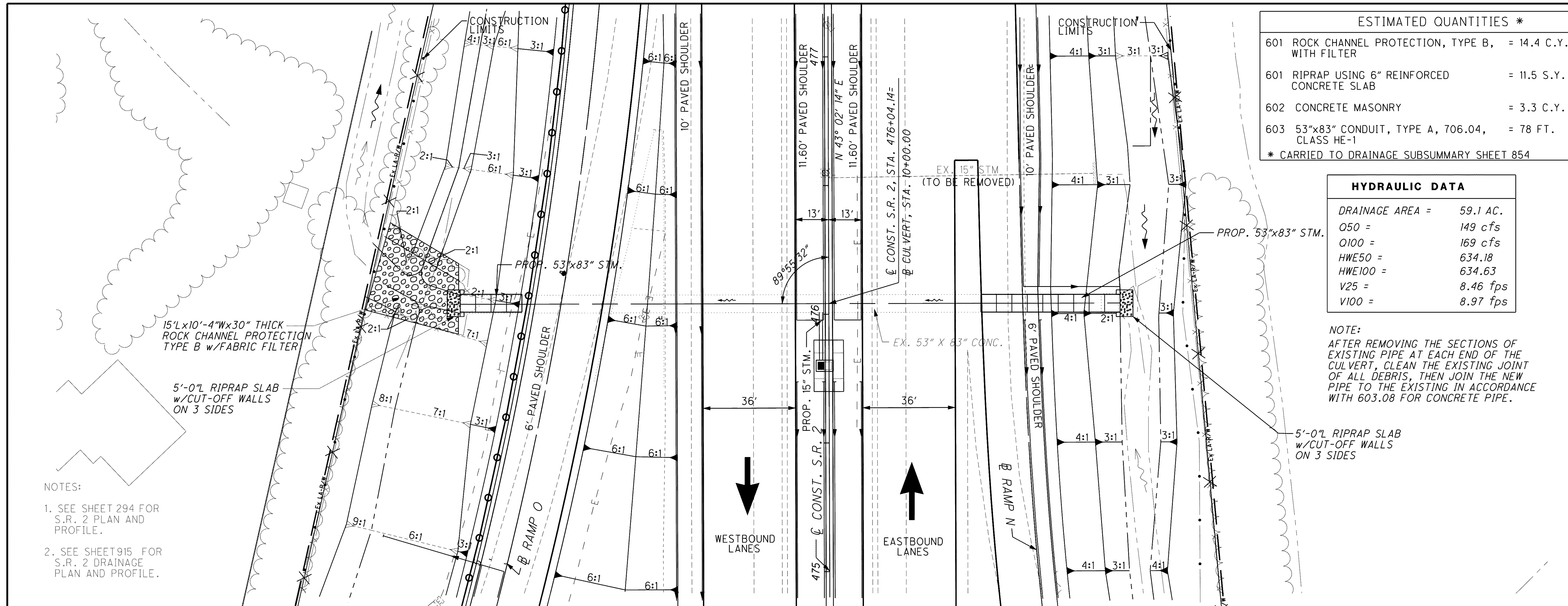
857
1679

ESTIMATED QUANTITIES *	
601 ROCK CHANNEL PROTECTION, TYPE B, WITH FILTER	= 14.4 C.Y.
601 RIPRAP USING 6" REINFORCED CONCRETE SLAB	= 11.5 S.Y.
602 CONCRETE MASONRY	= 3.3 C.Y.
603 53"x83" CONDUIT, TYPE A, 706.04, CLASS HE-1	= 78 FT.

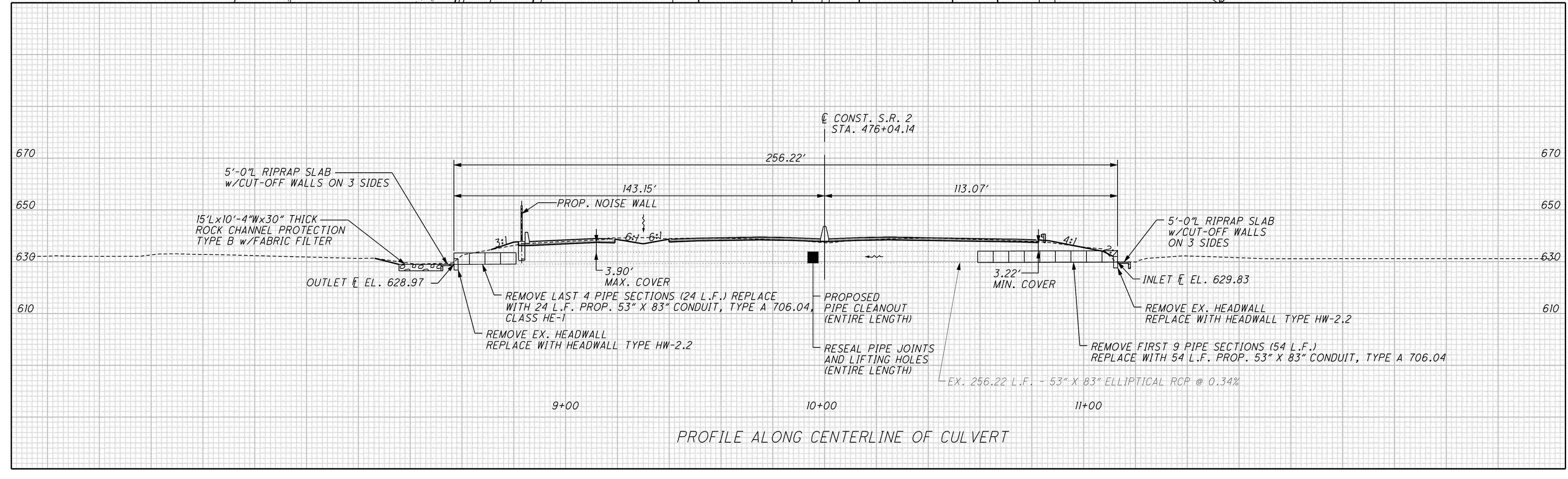
* CARRIED TO DRAINAGE SUBSUMMARY SHEET 854

HYDRAULIC DATA	
DRAINAGE AREA =	59.1 AC.
Q50 =	149 cfs
Q100 =	169 cfs
HWE50 =	634.18
HWE100 =	634.63
V25 =	8.46 fps
V100 =	8.97 fps

NOTE:
AFTER REMOVING THE SECTIONS OF EXISTING PIPE AT EACH END OF THE CULVERT, CLEAN THE EXISTING JOINT OF ALL DEBRIS, THEN JOIN THE NEW PIPE TO THE EXISTING IN ACCORDANCE WITH 603.08 FOR CONCRETE PIPE.



- NOTES:
1. SEE SHEET 294 FOR S.R. 2 PLAN AND PROFILE.
 2. SEE SHEET 915 FOR S.R. 2 DRAINAGE PLAN AND PROFILE.



PROFILE ALONG CENTERLINE OF CULVERT

C:\Project\lak\13486\drainage\sheet\13486DC03.dgn 6/25/2008 2:47:52 PM pberdis