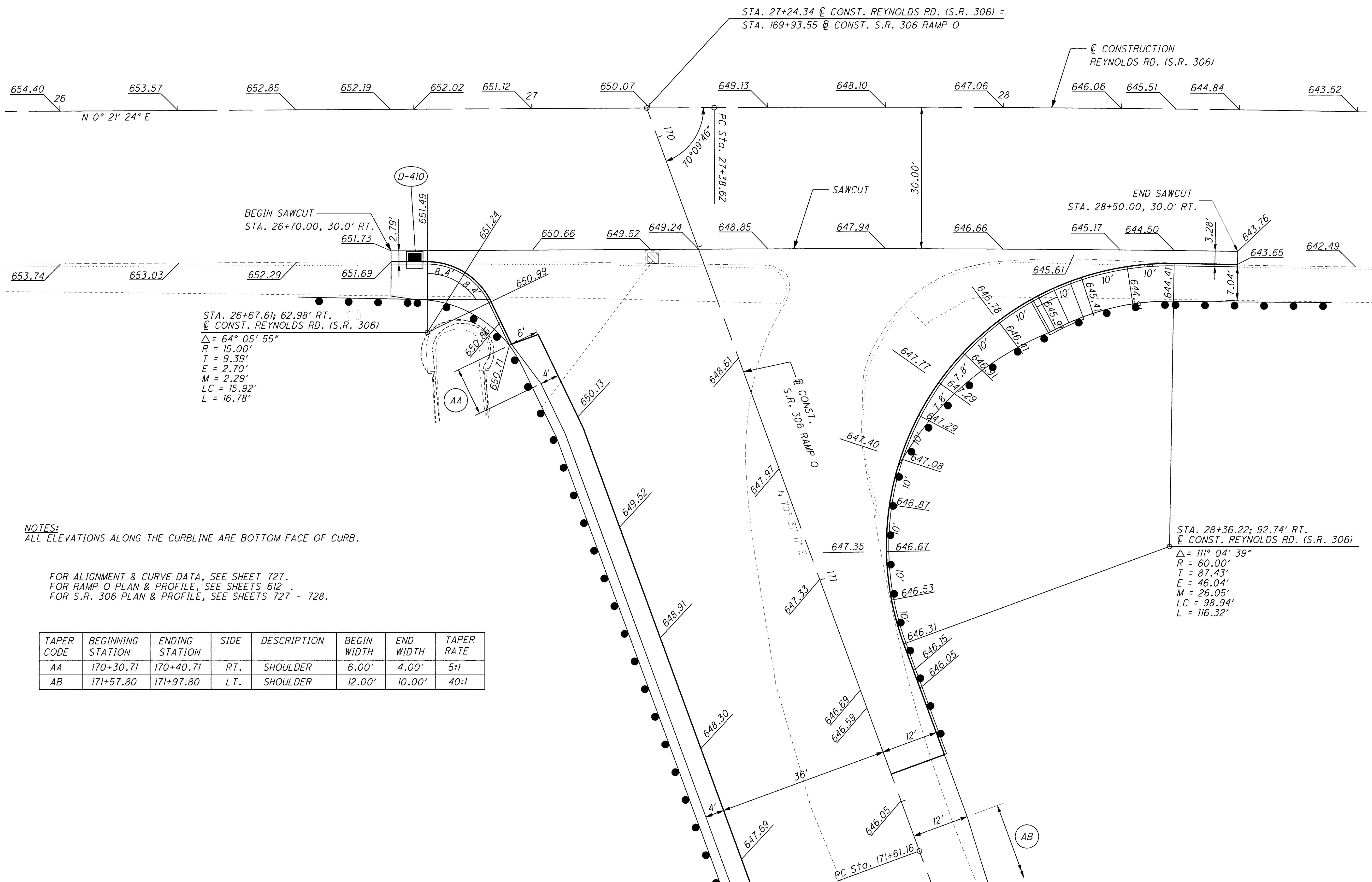


CALCULATED
ATR
CHECKED
MBM

**INTERSECTION DETAIL
REYNOLDS RD. / S.R. 306 RAMP O**

LAK-2-3.32

833
1679



STA. 26+67.61; 62.98' RT.
 @ CONST. REYNOLDS RD. (S.R. 306)
 $\Delta = 64^\circ 05' 55''$
 $R = 15.00'$
 $T = 9.39'$
 $E = 2.70'$
 $M = 2.29'$
 $LC = 15.92'$
 $L = 16.78'$

STA. 28+36.22; 92.74' RT.
 @ CONST. REYNOLDS RD. (S.R. 306)
 $\Delta = 111^\circ 04' 39''$
 $R = 60.00'$
 $T = 87.43'$
 $E = 46.04'$
 $M = 26.05'$
 $LC = 98.94'$
 $L = 116.32'$

NOTES:
 ALL ELEVATIONS ALONG THE CURBLINE ARE BOTTOM FACE OF CURB.

FOR ALIGNMENT & CURVE DATA, SEE SHEET 727.
 FOR RAMP O PLAN & PROFILE, SEE SHEETS 612.
 FOR S.R. 306 PLAN & PROFILE, SEE SHEETS 727 - 728.

TAPER CODE	BEGINNING STATION	ENDING STATION	SIDE	DESCRIPTION	BEGIN WIDTH	END WIDTH	TAPER RATE
AA	170+30.71	170+40.71	RT.	SHOULDER	6.00'	4.00'	5:1
AB	171+57.80	171+97.80	LT.	SHOULDER	12.00'	10.00'	40:1

\\Akrn01\Data\Civil\2004108\00\13486\roadway\sheet\13486G1413a.dgn 6/16/2008 10:02:58 AM mmoellendick