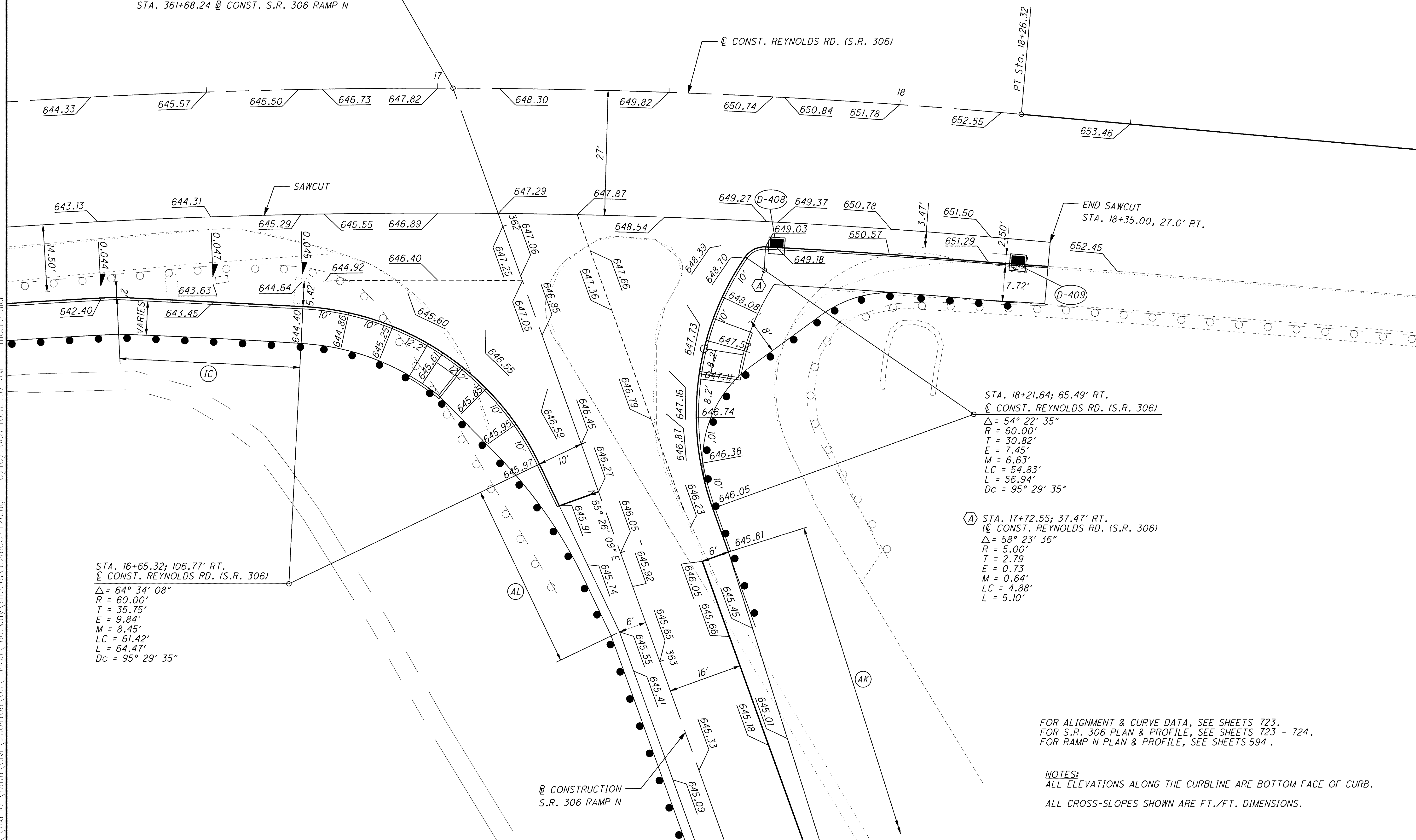


CALCULATED: MBM
CHECKED: BSH

| TAPER CODE | BEGINNING STATION | ENDING STATION | SIDE | DESCRIPTION | BEGIN WIDTH | END WIDTH | TAPER RATE |
|------------|-------------------|----------------|------|-------------|-------------|-----------|------------|
| AK | 362+82.74 | 363+57.74 | LT. | SHOULDER | 6.00' | 3.00' | 25:1 |
| AL | 362+91.01 | 362+91.01 | RT. | SHOULDER | 10.00' | 6.00' | 10:1 |
| IC | 16+28.55 | 16+69.91 | RT. | SHOULDER | 2.00' | 5.42' | 12:1 |

STA. 17+03.31 @ CONST. REYNOLDS RD. (S.R. 306) =
STA. 361+68.24 @ CONST. S.R. 306 RAMP N



STA. 18+21.64; 65.49' RT.
 @ CONST. REYNOLDS RD. (S.R. 306)
 $\Delta = 54^\circ 22' 35''$
 $R = 60.00'$
 $T = 30.82'$
 $E = 7.45'$
 $M = 6.63'$
 $LC = 54.83'$
 $L = 56.94'$
 $Dc = 95^\circ 29' 35''$

(A) STA. 17+72.55; 37.47' RT.
 @ CONST. REYNOLDS RD. (S.R. 306)
 $\Delta = 58^\circ 23' 36''$
 $R = 5.00'$
 $T = 2.79$
 $E = 0.73$
 $M = 0.64'$
 $LC = 4.88'$
 $L = 5.10'$

STA. 16+65.32; 106.77' RT.
 @ CONST. REYNOLDS RD. (S.R. 306)
 $\Delta = 64^\circ 34' 08''$
 $R = 60.00'$
 $T = 35.75'$
 $E = 9.84'$
 $M = 8.45'$
 $LC = 61.42'$
 $L = 64.47'$
 $Dc = 95^\circ 29' 35''$

FOR ALIGNMENT & CURVE DATA, SEE SHEETS 723.
 FOR S.R. 306 PLAN & PROFILE, SEE SHEETS 723 - 724.
 FOR RAMP N PLAN & PROFILE, SEE SHEETS 594.

NOTES:
 ALL ELEVATIONS ALONG THE CURBLINE ARE BOTTOM FACE OF CURB.
 ALL CROSS-SLOPES SHOWN ARE FT./FT. DIMENSIONS.

INTERSECTION DETAIL
 REYNOLDS RD. / S.R. 306 RAMP N

LAK - 2 - 3.32

\\Akrn01\Data\Civil\2004108\00\13486\roadway\sheets\13486G1412a.dgn 6/16/2008 10:02:37 AM mmoellendick