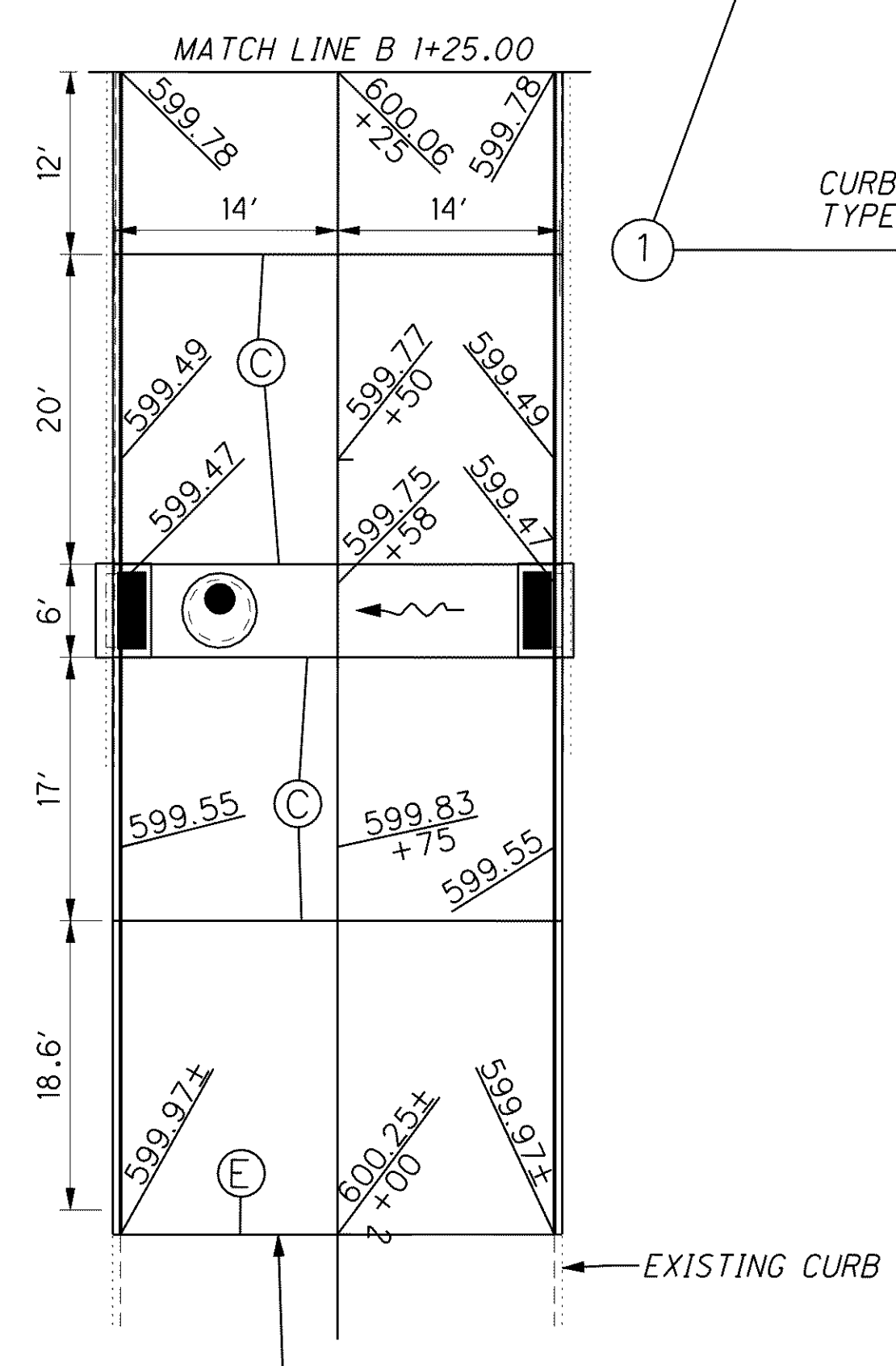
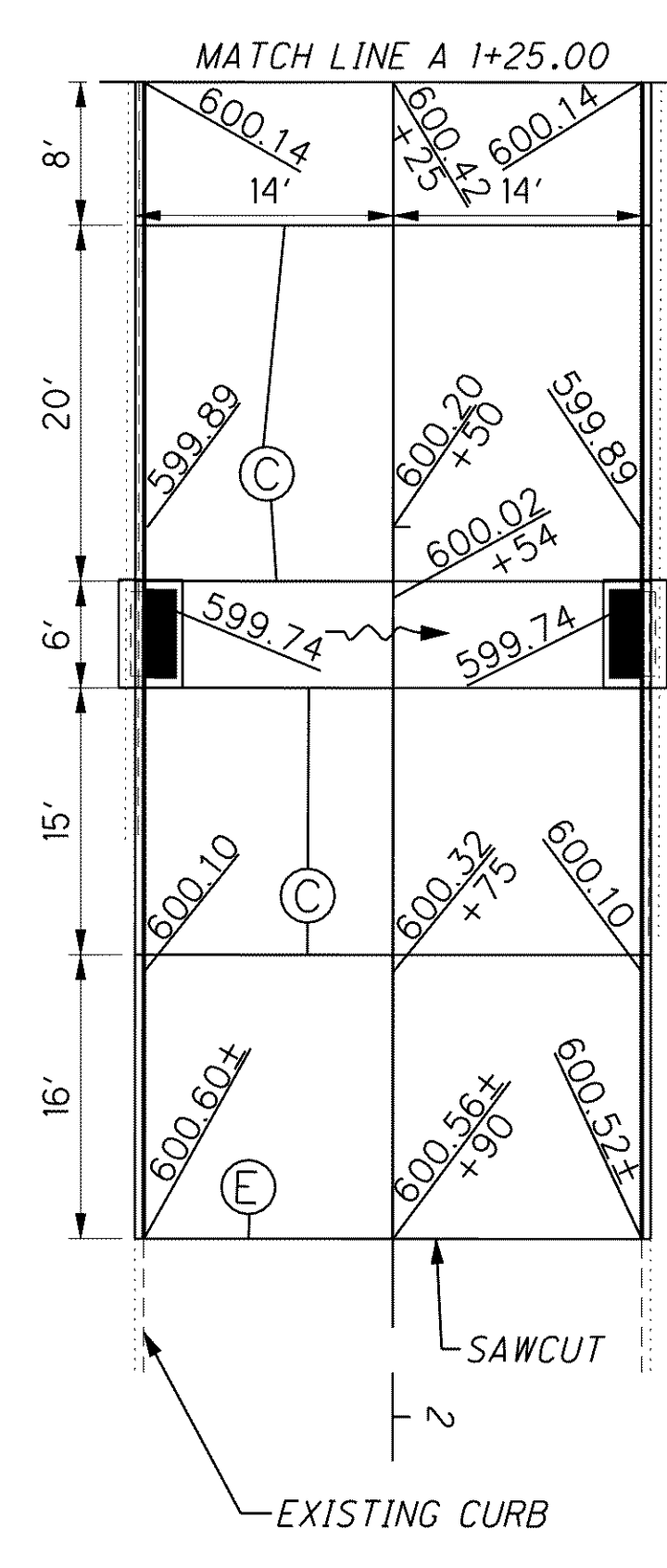
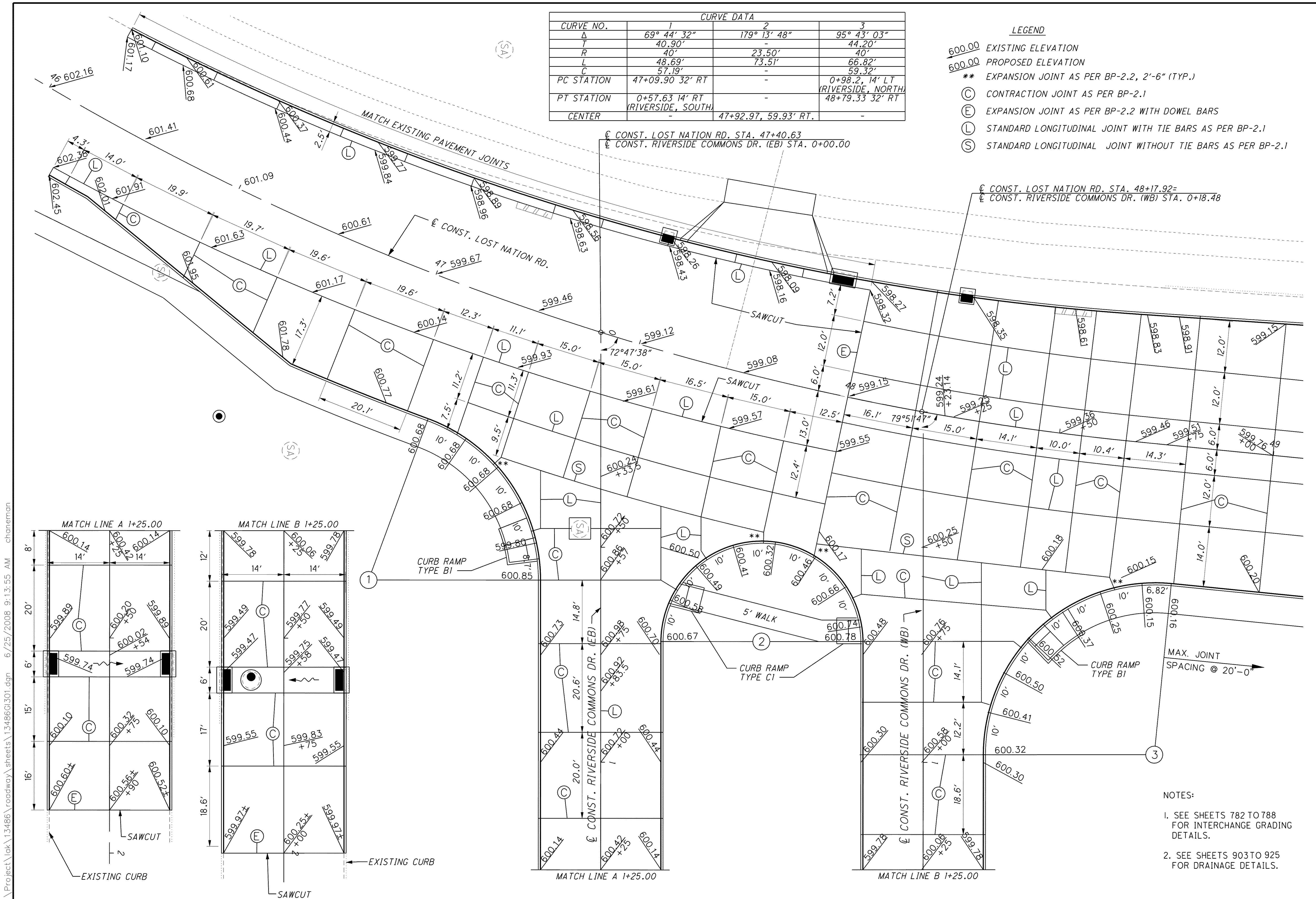


| CURVE DATA |                                      |                      |                                      |
|------------|--------------------------------------|----------------------|--------------------------------------|
| CURVE NO.  | 1                                    | 2                    | 3                                    |
| Δ          | 69° 44' 32"                          | 179° 13' 48"         | 95° 43' 03"                          |
| T          | 40.90'                               | -                    | 44.20'                               |
| R          | 40'                                  | 23.50'               | 40'                                  |
| L          | 48.69'                               | 73.51'               | 66.82'                               |
| C          | 57.19'                               | -                    | 59.32'                               |
| PC STATION | 47+09.90 32' RT                      | -                    | 0+98.2, 14' LT<br>(RIVERSIDE, NORTH) |
| PT STATION | 0+57.63 14' RT<br>(RIVERSIDE, SOUTH) | -                    | 48+79.33 32' RT                      |
| CENTER     | -                                    | 47+92.97, 59.93' RT. | -                                    |

- LEGEND**
- 600.00 EXISTING ELEVATION
  - 600.00 PROPOSED ELEVATION
  - \*\* EXPANSION JOINT AS PER BP-2.2, 2'-6" (TYP.)
  - (C) CONTRACTION JOINT AS PER BP-2.1
  - (E) EXPANSION JOINT AS PER BP-2.2 WITH DOWEL BARS
  - (L) STANDARD LONGITUDINAL JOINT WITH TIE BARS AS PER BP-2.1
  - (S) STANDARD LONGITUDINAL JOINT WITHOUT TIE BARS AS PER BP-2.1



- NOTES:**
1. SEE SHEETS 782 TO 788 FOR INTERCHANGE GRADING DETAILS.
  2. SEE SHEETS 903 TO 925 FOR DRAINAGE DETAILS.

HORIZONTAL SCALE IN FEET

CALCULATED: TMA  
CHECKED: DES

**INTERSECTION DETAIL**  
**LOST NATION RD. / RIVERSIDE COMMONS DR.**

**LAK-2-3.32**

822  
1679

G:\Project\lak\13486\roadway\sheet\13486GI301.dgn 6/25/2008 9:13:55 AM chaneman