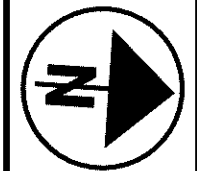


TAPER CODE	BEGINNING STATION	ENDING STATION	SIDE	DESCRIPTION	BEGIN WIDTH	END WIDTH	TAPER RATE
AY	14+56.00	15+06.00	RT.	PAVEMENT	31.50'	43.50'	4.2:1



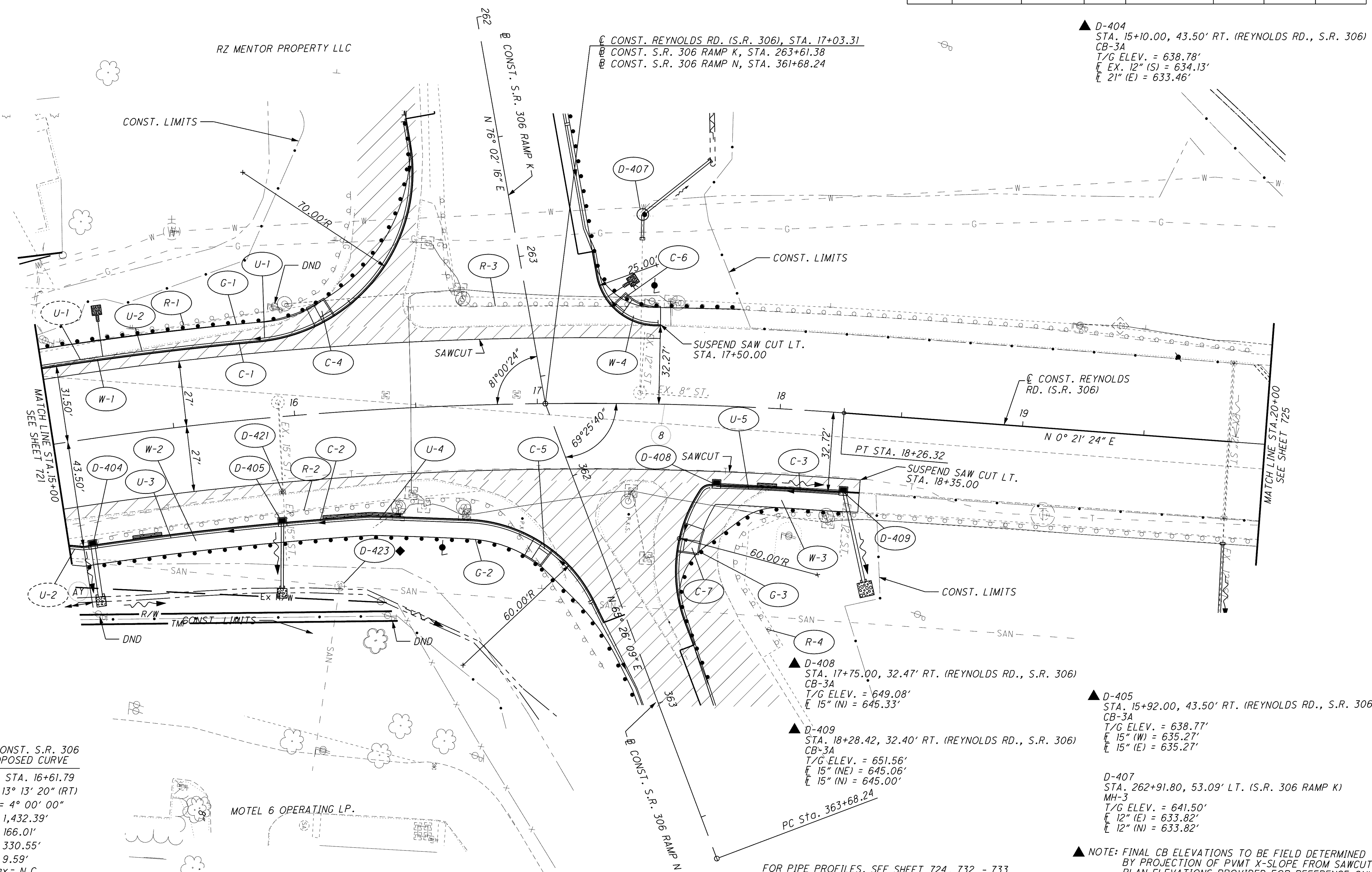
0 10 20
HORIZONTAL SCALE IN FEET

CALCULATED BSH CHECKED MBM

PLAN - REYNOLDS RD. (S.R. 306)
STA. 15+00.00 TO STA. 20+00.00

LAK-2-3.32

723
1679



▲ D-404
STA. 15+10.00, 43.50' RT. (REYNOLDS RD., S.R. 306)
CB-3A
T/G ELEV. = 638.78'
E EX. 12" (S) = 634.13'
E 21" (E) = 633.46'

▲ D-408
STA. 17+75.00, 32.47' RT. (REYNOLDS RD., S.R. 306)
CB-3A
T/G ELEV. = 649.08'
E 15" (N) = 645.33'

▲ D-409
STA. 18+28.42, 32.40' RT. (REYNOLDS RD., S.R. 306)
CB-3A
T/G ELEV. = 651.56'
E 15" (NE) = 645.06'
E 15" (N) = 645.00'

▲ D-405
STA. 15+92.00, 43.50' RT. (REYNOLDS RD., S.R. 306)
CB-3A
T/G ELEV. = 638.77'
E 15" (W) = 635.27'
E 15" (E) = 635.27'

D-407
STA. 262+91.80, 53.09' LT. (S.R. 306 RAMP K)
MH-3
T/G ELEV. = 641.50'
E 12" (E) = 633.82'
E 12" (N) = 633.82'

▲ NOTE: FINAL CB ELEVATIONS TO BE FIELD DETERMINED BY PROJECTION OF PVMT X-SLOPE FROM SAWCUT. PLAN ELEVATIONS PROVIDED FOR REFERENCE ONLY.
DND = DO NOT DISTURB

(RBO) RELOCATED/REMOVED BY OTHERS

(Hatched) ITEM 202 - ITEM REMOVED

◆ NOTE: SANITARY MANHOLE FROM RECORD PLANS. CONTRACTOR TO USE CAUTION WHILE EXCAVATING IN THE VICINITY

FOR PIPE PROFILES, SEE SHEET 724, 732 - 733
FOR INTERSECTION DETAILS, SEE SHEET 830 - 831
FOR RAMP K PLANS, SEE SHEET 580 - 581
FOR RAMP N PLANS, SEE SHEET 594 - 595
FOR REYNOLDS ROAD PROFILE, SEE SHEET 724
FOR UNDERDRAIN DETAILS, SEE SHEET 950

⑧ **CONST. S.R. 306 PROPOSED CURVE**
P.I. STA. 16+61.79
Δ = 13° 13' 20" (RT)
Dc = 4° 00' 00"
R = 1,432.39'
T = 166.01'
L = 330.55'
E = 9.59'
Emax = N.C.
PC = 14+95.77
PT = 18+26.32
D.S. = 40 mph

\\Akrn01\Data\Civil\2004108\00\13486\roadway\sheets\13486CP416.dgn 6/16/2008 10:10:30 AM mmoellendick