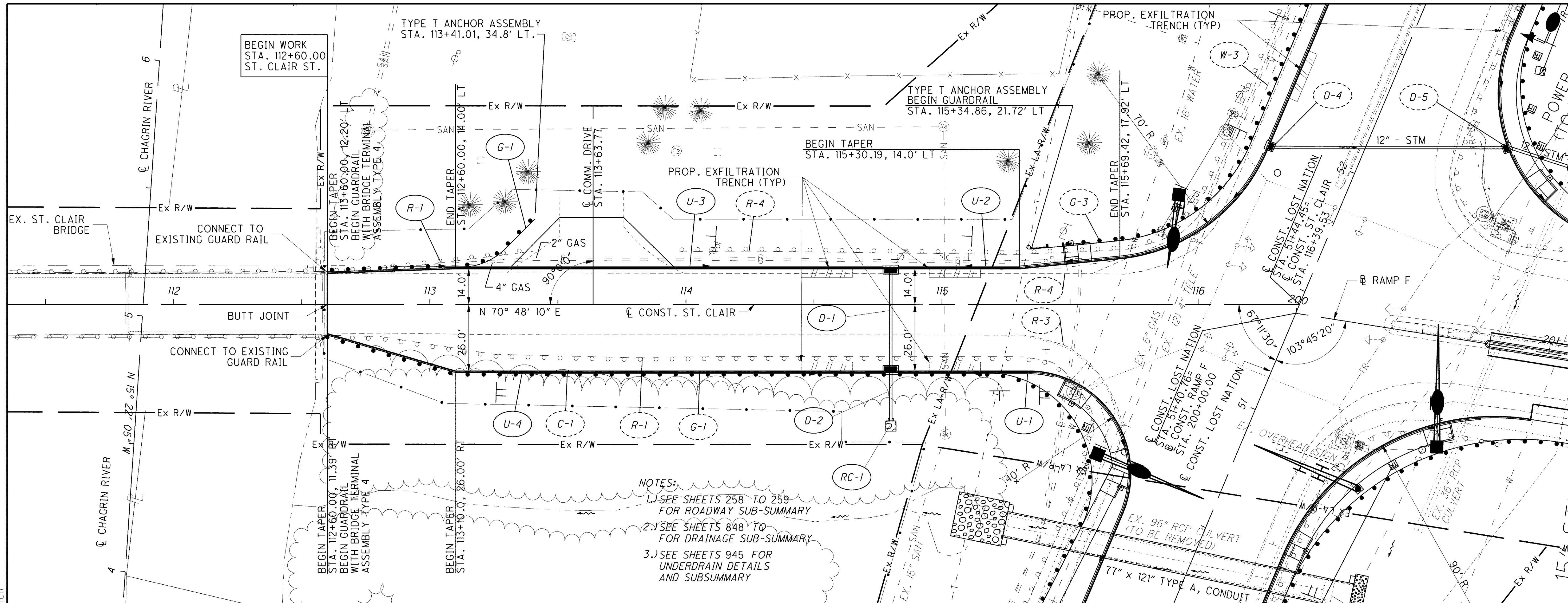
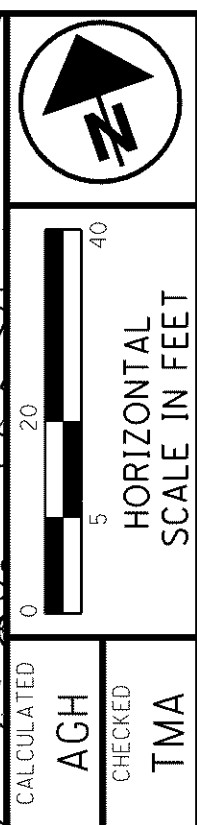
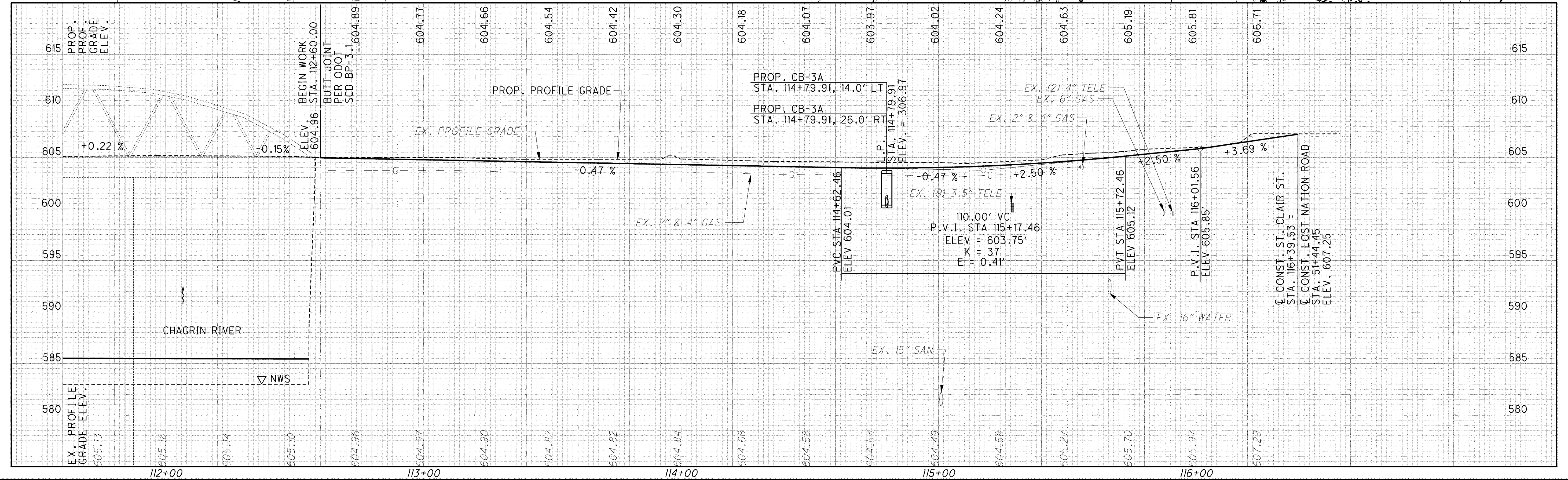


o:\project\lak\13486\roadway\sheets\13486GP422.dgn 6/24/2008 10:59:37 AM choneman



NOTES:
 1.) SEE SHEETS 258 TO 259 FOR ROADWAY SUB-SUMMARY
 2.) SEE SHEETS 848 TO 849 FOR DRAINAGE SUB-SUMMARY
 3.) SEE SHEETS 945 FOR UNDERDRAIN DETAILS AND SUBSUMMARY



PLAN AND PROFILE - ST. CLAIR ST.
 BEGIN TO END

LAK-2-3.32

713
1679