

**LOST NATION RD. CURVE DATA**

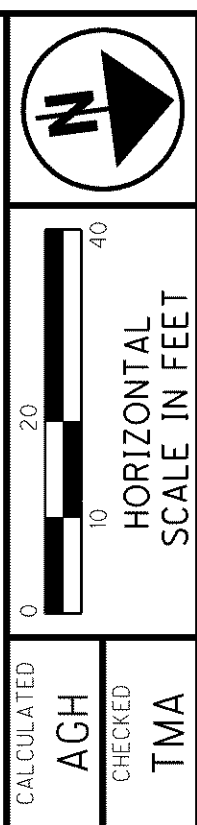
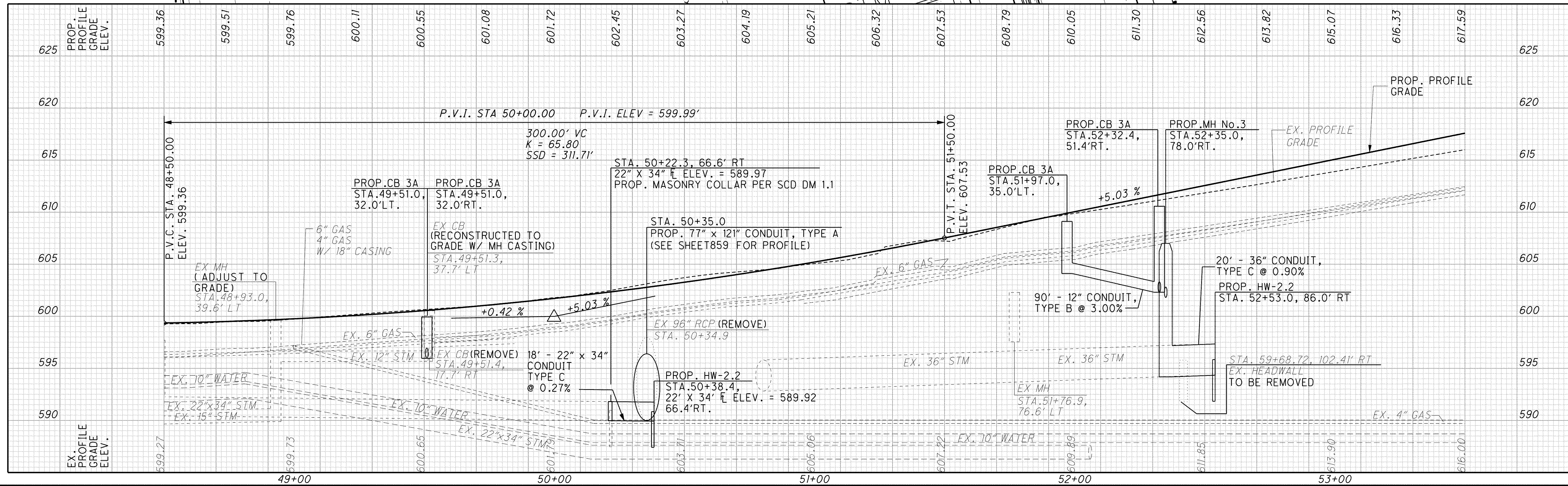
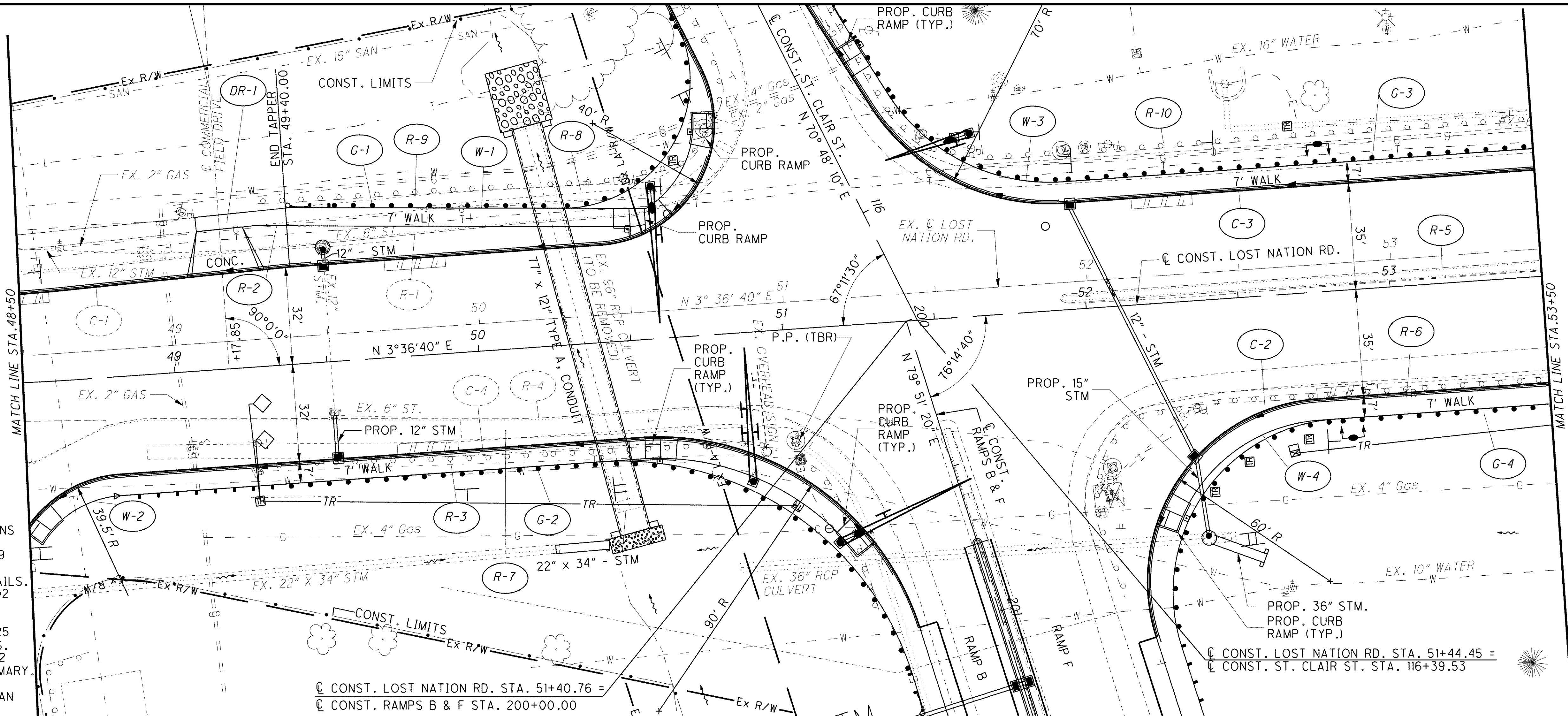
P.I. STA. 45+71.44  
 $\Delta = 61^\circ 27' 13''$  (LT)  
 $D_c = 9^\circ 15' 00''$   
 $R = 619.41'$   
 $T = 368.17'$   
 $L = 664.36'$   
 $E = 101.16'$   
 $e_{max} = 0.032$   
 $PC = 42+03.27$   
 $PT = 48+67.63$   
 $D.S. = 40$  mph

**LEGEND**

P.P. (TBR)  
 -POWER POLE TO BE RELOCATED BY OTHERS

**NOTES:**

- SEE SHEETS 717 TO 718 FOR RIVERSIDE COMMONS PLAN AND PROFILES.
- SEE SHEETS 822 TO 829 FOR INTERSECTION AND PAVT. JOINT DETAILS.
- SEE SHEETS 897 TO 902 FOR DRAINAGE PLAN AND PROFILES.
- SEE SHEETS 920 TO 925 FOR DRAINAGE DETAILS.
- SEE SHEETS 248 TO 252 FOR ROADWAY SUBSUMMARY.
- SEE SHEET 713 FOR ST. CLAIR ST. PLAN AND PROFILE.



**PLAN AND PROFILE - LOST NATION RD.  
 STA. 48+50.00 TO STA. 53+00.00**

**LAK-2-3.32**

690  
 1679

g:\project\lak\13486\roadway\_sheets\13486GP410.dgn 7/11/2008 8:03:11 AM dshner