



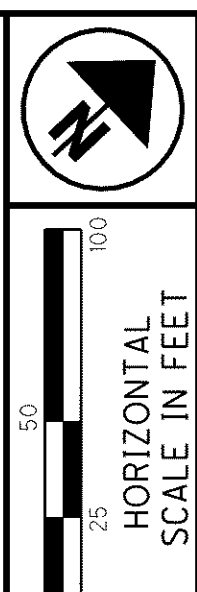
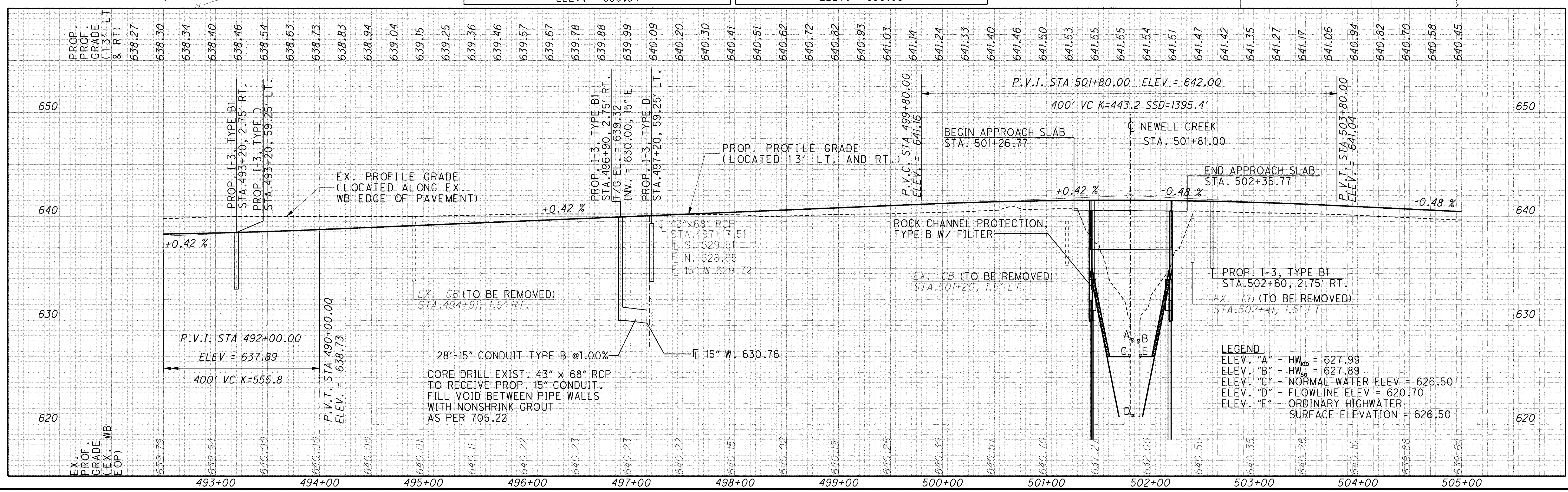
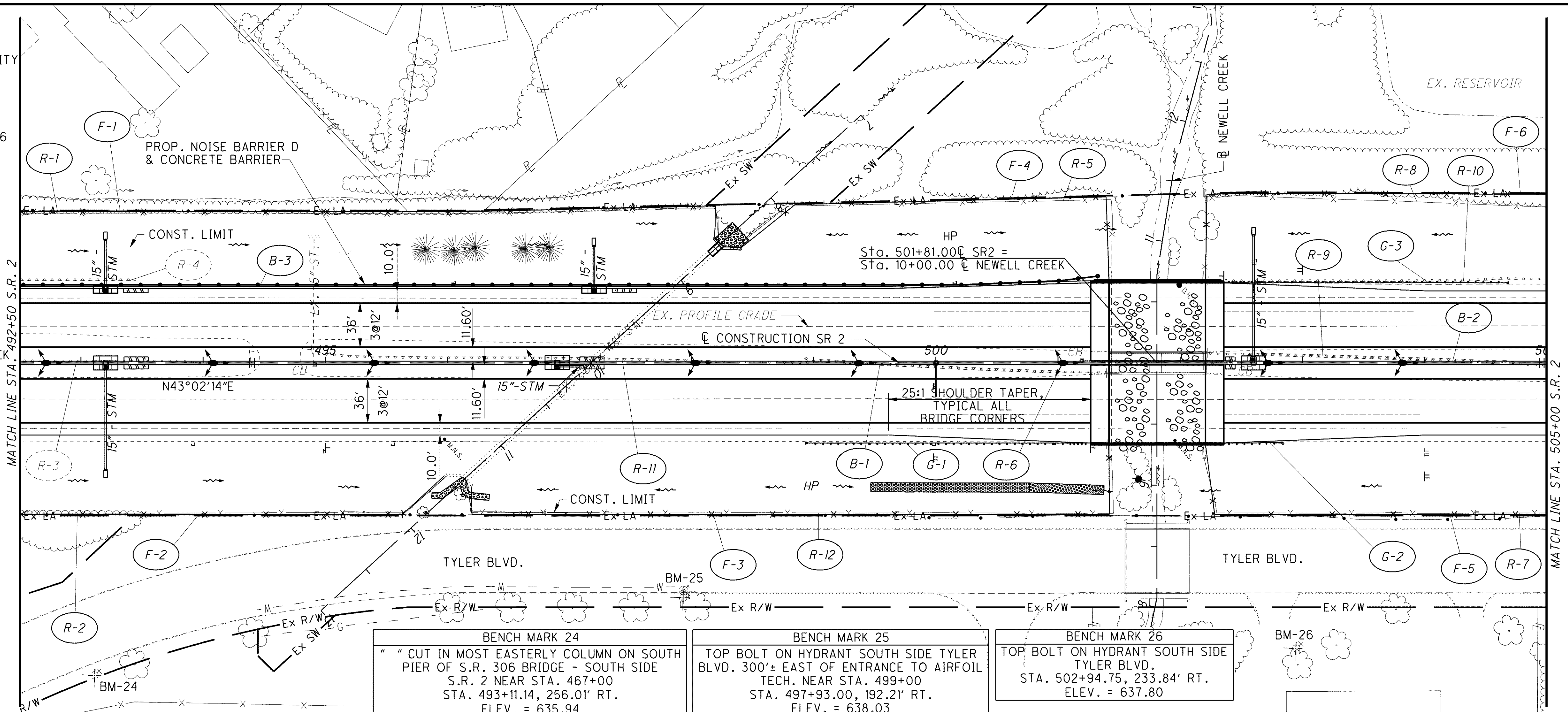


**NOTES:**

1. SEE SHEETS 947 TO 949 FOR WATER QUALITY BMP DETAILS AND QUANTITIES.
2. SEE SHEETS 903 TO 916 FOR DRAINAGE DETAILS.
3. SEE SHEETS 874 TO 896 FOR DRAINAGE PLAN AND PROFILES.
4. SEE SHEETS 926 TO 938 FOR UNDERDRAIN DETAILS AND SUBSUMMARY.
5. SEE SHEETS 1240 TO 1261 FOR LIGHTING PLANS.
6. SEE SHEETS 1094 TO 1113 FOR TRAFFIC CONTROL PLANS.
7. SEE SHEETS 248 TO 255 FOR ROADWAY SUBSUMMARY TABLE.
8. SEE SHEETS 1594 TO 1669 FOR NEWELL CREEK BRIDGE PLANS.

**LEGEND**

-  EX. WETLANDS
-  ITEM 670 DITCH EROSION PROTECTION, 660.02
-  ITEM 601 ROCK CHANNEL PROTECTION TYPE C W/ FILTER
-  PAVEMENT TO BE REMOVED



CALCULATED: PSB  
 CHECKED: EJA

**PLAN AND PROFILE**  
**STA. 492+50 TO STA. 505+00**

**LAK-2-3.32**

G:\Project\ok\13486\roadway\sheets\13486CP18.dgn 6/26/2008 7:32:33 AM pberdis