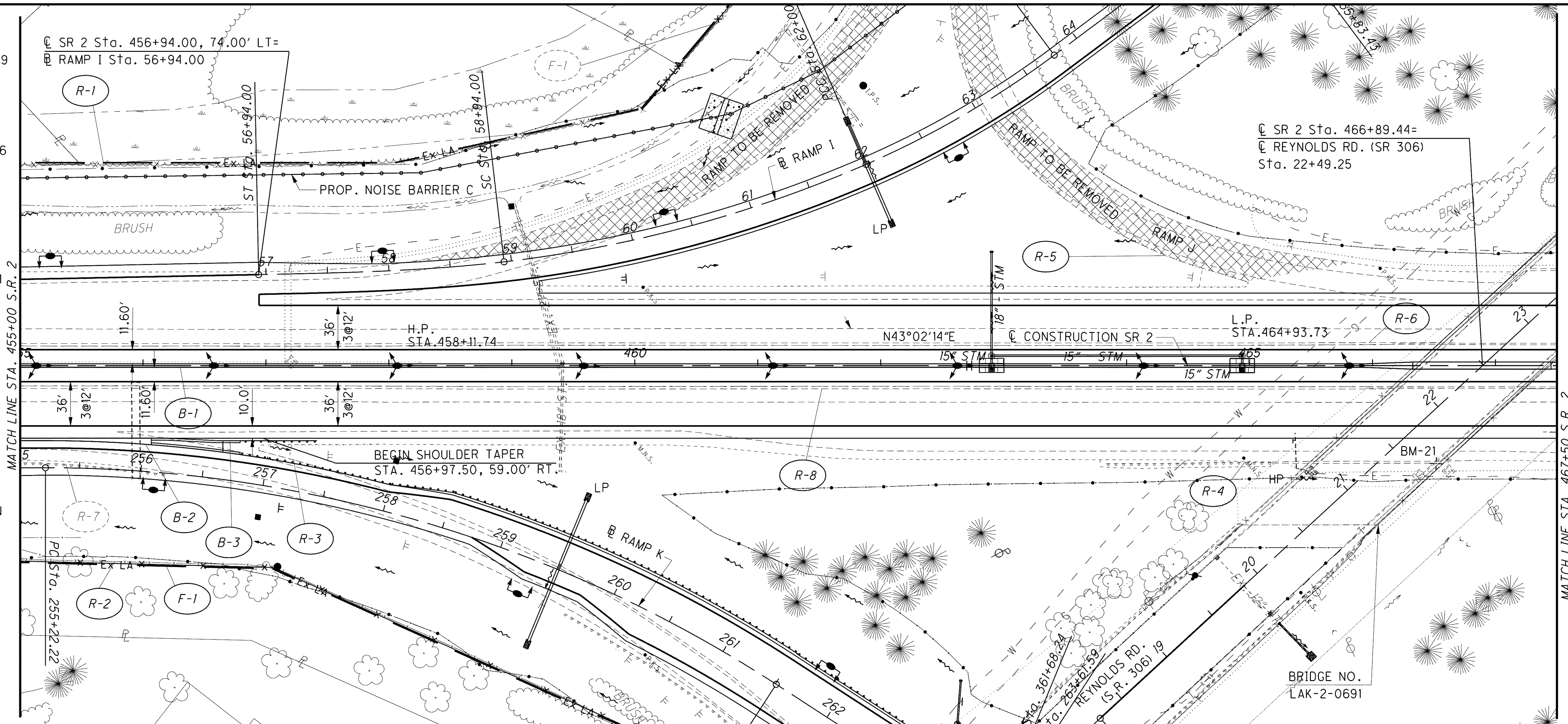


NOTES:

- SEE SHEETS 947 TO 949 FOR WATER QUALITY BMP DETAILS AND QUANTITIES.
- SEE SHEETS 903 TO 916 FOR DRAINAGE DETAILS.
- SEE SHEETS 874 TO 896 FOR DRAINAGE PLAN AND PROFILES.
- SEE SHEETS 1094 TO 1113 FOR TRAFFIC CONTROL PLANS.
- SEE SHEETS 926 TO 938 FOR UNDERDRAIN DETAILS AND SUBSUMMARY.
- SEE SHEETS 1240 TO 1261 FOR LIGHTING PLANS.
- SEE SHEETS 561 TO 626 FOR SR 306 INTERCHANGE PLAN AND PROFILES.
- SEE SHEETS 248 TO 253 FOR ROADWAY SUMMARY TABLES.

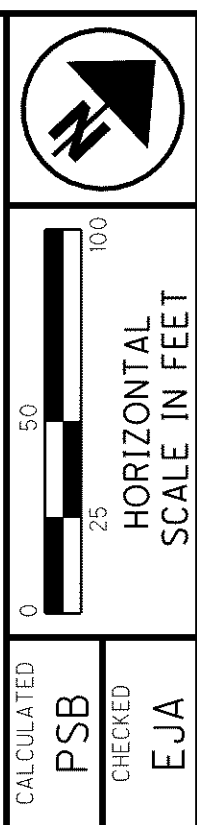
LEGEND

- EX. WETLANDS
- ITEM 670 DITCH EROSION PROTECTION, 660.02
- ITEM 601 ROCK CHANNEL PROTECTION TYPE C W/ FILTER
- PAVEMENT TO BE REMOVED



BENCH MARK 21
 " CUT IN MOST EASTERLY COLUMN ON SOUTH PIER OF S.R. 306 BRIDGE - SOUTH SIDE S.R. 2 NEAR STA. 467+00 STA. 466+51.73, 79.69' RT. ELEV. = 640.95

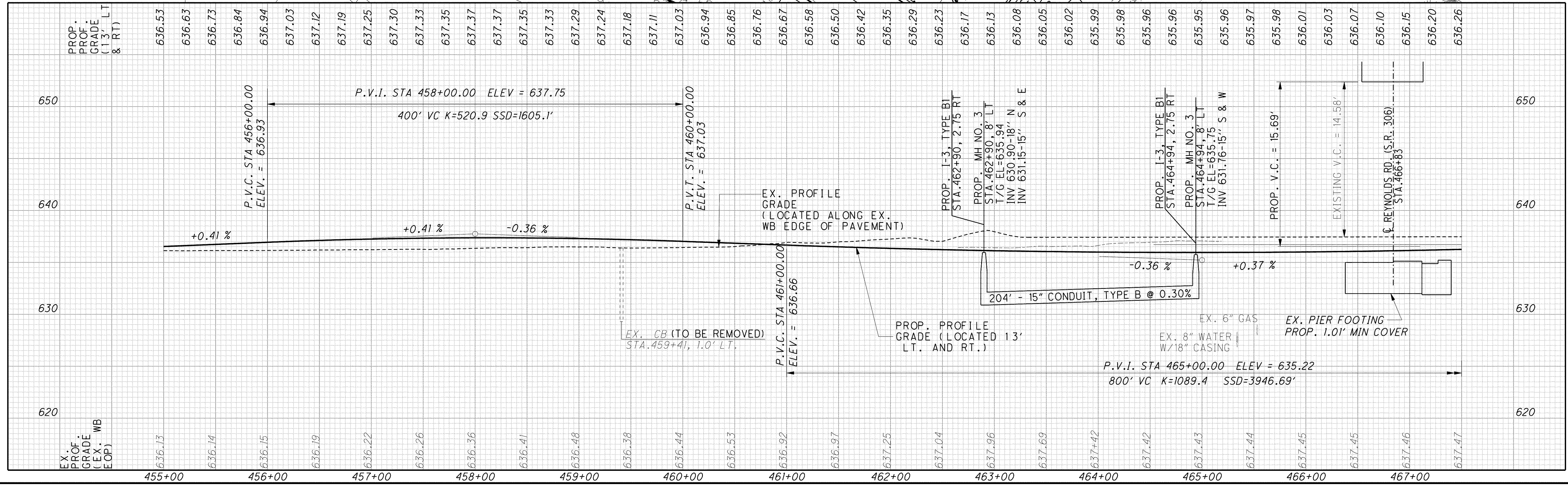
BENCH MARK 20
 I.P. SET ON SOUTH SIDE S.R. 2 5' NORTH R/W NEAR STA. 457+00 @ 306 SOUTH EXIT RAMP NEAR SPLIT FROM S.R. 2 STA. 457+09.38, 163.39' RT. ELEV. = 633.19



CALCULATED PSB CHECKED EJA

PLAN AND PROFILE
STA. 455+00 TO STA. 467+50

LAK-2-3.32



G:\Project\lak\13486\roadway\sheet\13486GP15.dgn 6/26/2008 8:33:26 AM pberdis