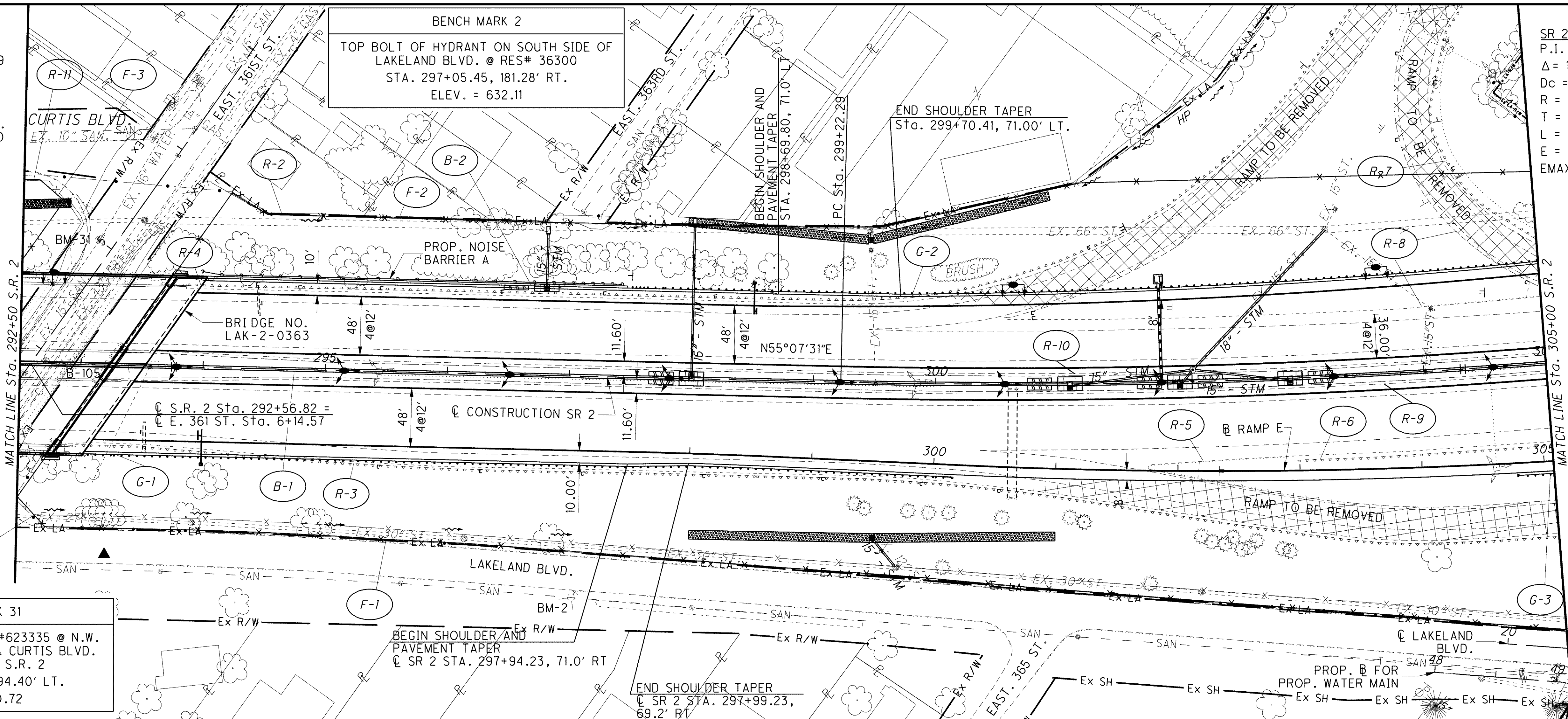


NOTES:

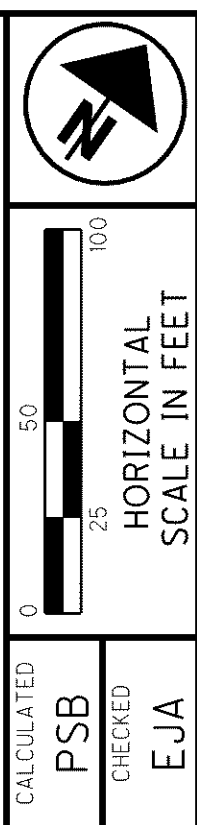
- SEE SHEETS 947 TO 949 FOR WATER QUALITY BMP DETAILS AND QUANTITIES.
- SEE SHEETS 903 TO 916 FOR DRAINAGE DETAILS.
- SEE SHEETS 874 TO 890 FOR DRAINAGE PLAN AND PROFILES.
- SEE SHEETS 926 TO 938 FOR UNDERDRAIN DETAILS AND SUBSUMMARY.
- SEE SHEETS 1094 TO 1113 FOR TRAFFIC CONTROL PLANS.
- SEE SHEETS 1240 TO 1261 FOR LIGHTING PLANS.
- SEE SHEETS 248 TO 255 FOR ROADWAY SUMMARY TABLES.
- SEE SHEETS 482 TO 507 FOR VINE STREET RAMP PLAN AND PROFILES.
- SEE SHEETS 1272 TO 1315 FOR E. 361ST BRIDGE PLANS.



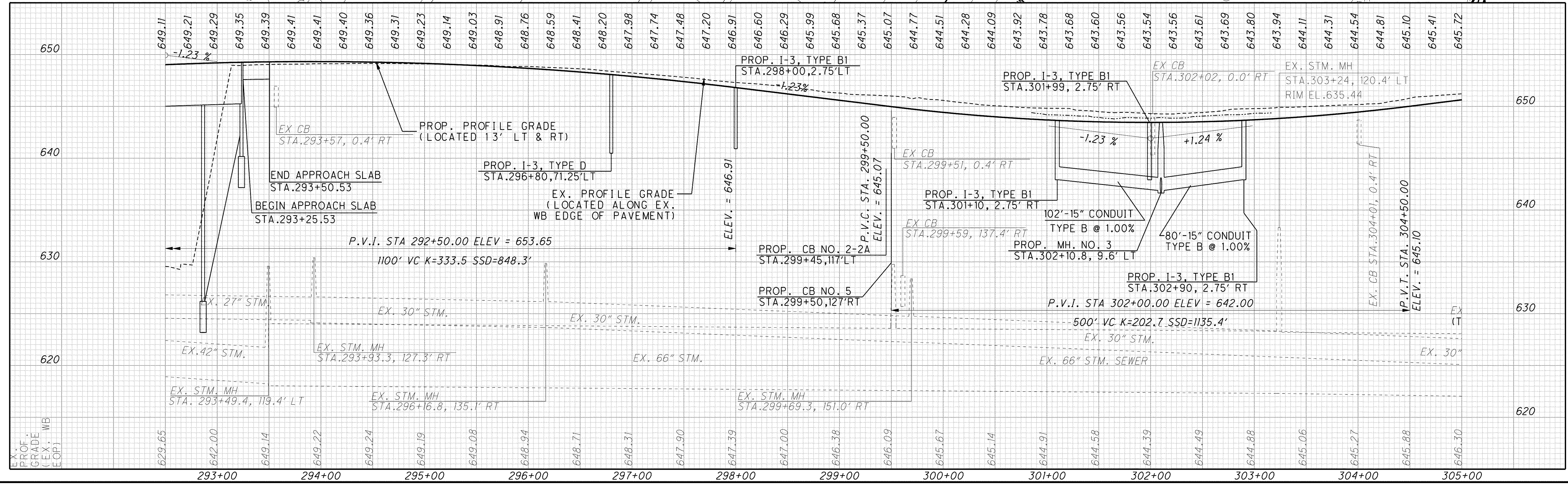
SR 2 CURVE DATA
 P.I. Sta. 305+02.97
 $\Delta = 11^\circ 34' 28''$ (LT)
 $Dc = 1^\circ 00' 00''$
 $R = 5,729.48'$
 $T = 580.69'$
 $L = 1,157.42'$
 $E = 29.35'$
 $EMAX = 0.030$

LEGEND

- EX. WETLANDS
- ITEM 670 DITCH EROSION PROTECTION, 660.02
- ITEM 601 ROCK CHANNEL PROTECTION TYPE C W/ FILTER
- PAVEMENT TO BE REMOVED



BENCH MARK 31
 P.K. SET E. SIDE P.P. #623335 @ N.W. CORNER OF E. 361ST. & CURTIS BLVD. NORTH SIDE OF S.R. 2
 STA. 292+98.44, 94.40' LT.
 ELEV. = 630.72



PLAN AND PROFILE
STA. 292+50 TO STA. 305+00

LAK-2-3.32

280
1679

G:\Project\lak\13486\roadway\sheets\13486CP02.dgn 6/26/2008 8:08:53 AM pberdis