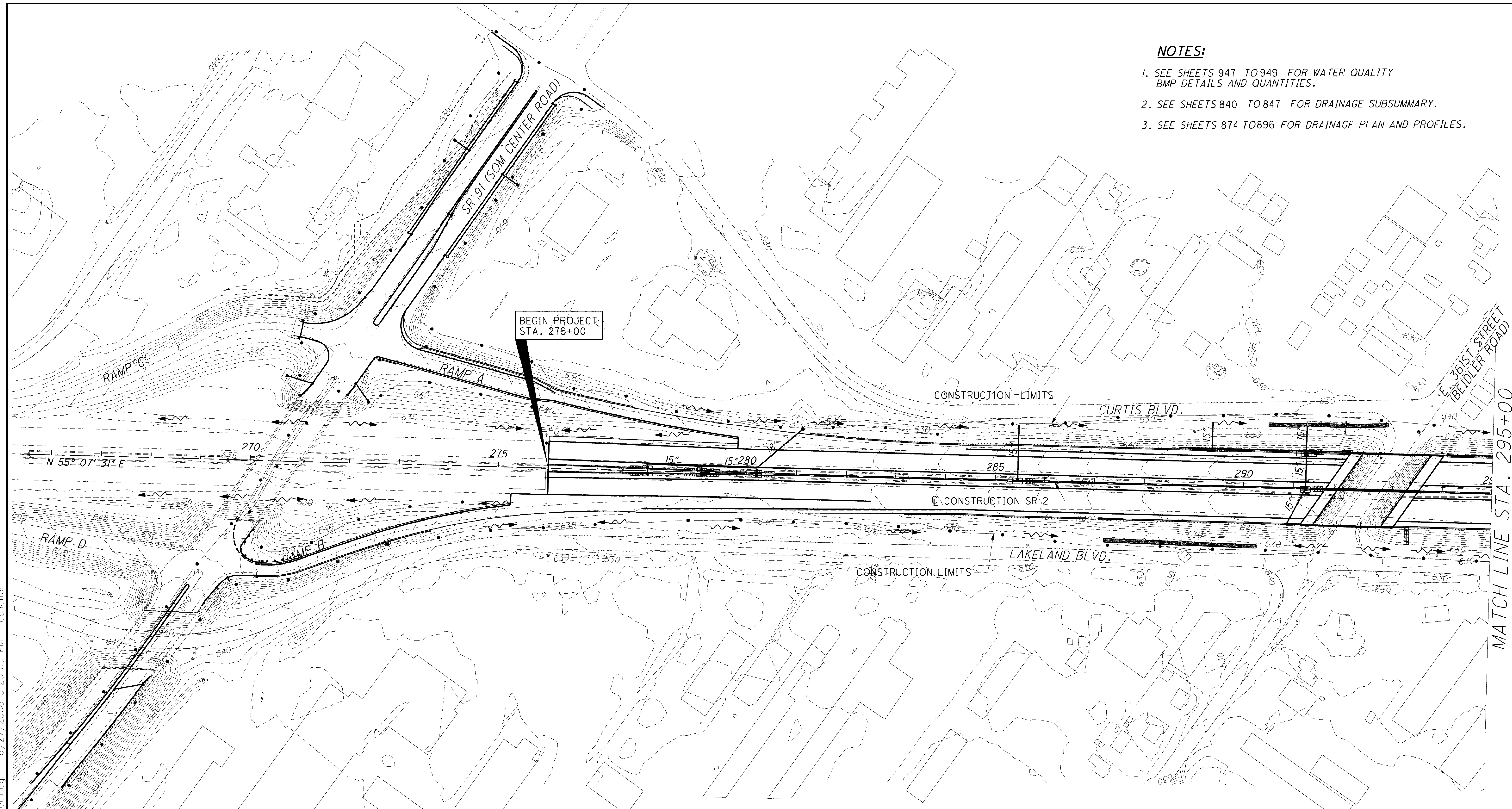


NOTES:

1. SEE SHEETS 947 TO 949 FOR WATER QUALITY BMP DETAILS AND QUANTITIES.
2. SEE SHEETS 840 TO 847 FOR DRAINAGE SUBSUMMARY.
3. SEE SHEETS 874 TO 896 FOR DRAINAGE PLAN AND PROFILES.



MATCH LINE STA. 295+00

PROJECT SITE PLAN
STA. 266+00 TO STA. 295+00

PROJECT DESCRIPTION

THE PROJECT INCLUDES THE RECONSTRUCTION AND REHABILITATION OF 4.5 MILES OF SR 2 AND FOUR (4) INTERCHANGES IN LAKE COUNTY. THE WORK INCLUDES RECONSTRUCTION AND WIDENING OF THE PAVEMENT, REPLACEMENT OR REHABILITATION OF 13 BRIDGES, NEW DRAINAGE STRUCTURES, TRAFFIC CONTROL, AND HIGHWAY LIGHTING. THE INTERCHANGES AT SR 91, SR 640, LOST NATION ROAD, AND SR 306 WILL BE UPGRADED.

LEGEND

- PROP. 1-3, TYPE B1
- PROP. 1-3, TYPE D
- PROP. MH
- PROP. CB
- PROP. DITCH
- EROSION CONTROL
- PROP. ROCK CHANNEL PROTECTION

USGS 7.5 MINUTE QUADRANT MAPS:
EASTLAKE, OHIO
MENTOR, OHIO
LONGITUDE: 81°24'00"*
LATITUDE: 41°39'30"*

*LONGITUDE AND LATITUDE TO APPROX. CENTER OF PROJECT

** A RUNOFF COEFFICIENT OF 0.90 WAS USED FOR THE ENTIRE ODOT RIGHT-OF-WAY FOR SIZING AND CALCULATING THE POST-CONSTRUCTION STORM WATER BEST MANAGEMENT PRACTICES (BMPs).

PROJECT DATA

TOTAL AREA (RIGHT-OF-WAY):	261.1 ACRES
PROJECT EARTH DISTURBED AREA:	203.0 ACRES
ESTIMATED CONTRACTOR EARTH DISTURBED AREA:	17.5 ACRES
NOTICE OF INTENT EARTH DISTURBED AREA:	220.5 ACRES
IMPERVIOUS (PAVED) AREA FOR PRE-CONSTRUCTION SITE:	88.8 ACRES
IMPERVIOUS (PAVED) AREA FOR POST-CONSTRUCTION SITE:	109.2 ACRES
** RUNOFF COEFFICIENT FOR PRE-CONSTRUCTION SITE:	0.52
** RUNOFF COEFFICIENT FOR POST-CONSTRUCTION SITE:	0.56
SOIL AND WATER CONSERVATION MAP (LAKE COUNTY, OHIO):	14, 19, 20, AND 25
IMMEDIATE RECEIVING WATERS:	CHAGRIN RIVER AND NEWELL CREEK
SUBSEQUENT RECEIVING WATERS:	LAKE ERIE

o:\project\lak\13486\drainage\sheets\13486DE001.dgn 6/27/2008 3:25:05 PM dshoner

LAK-2-3.32