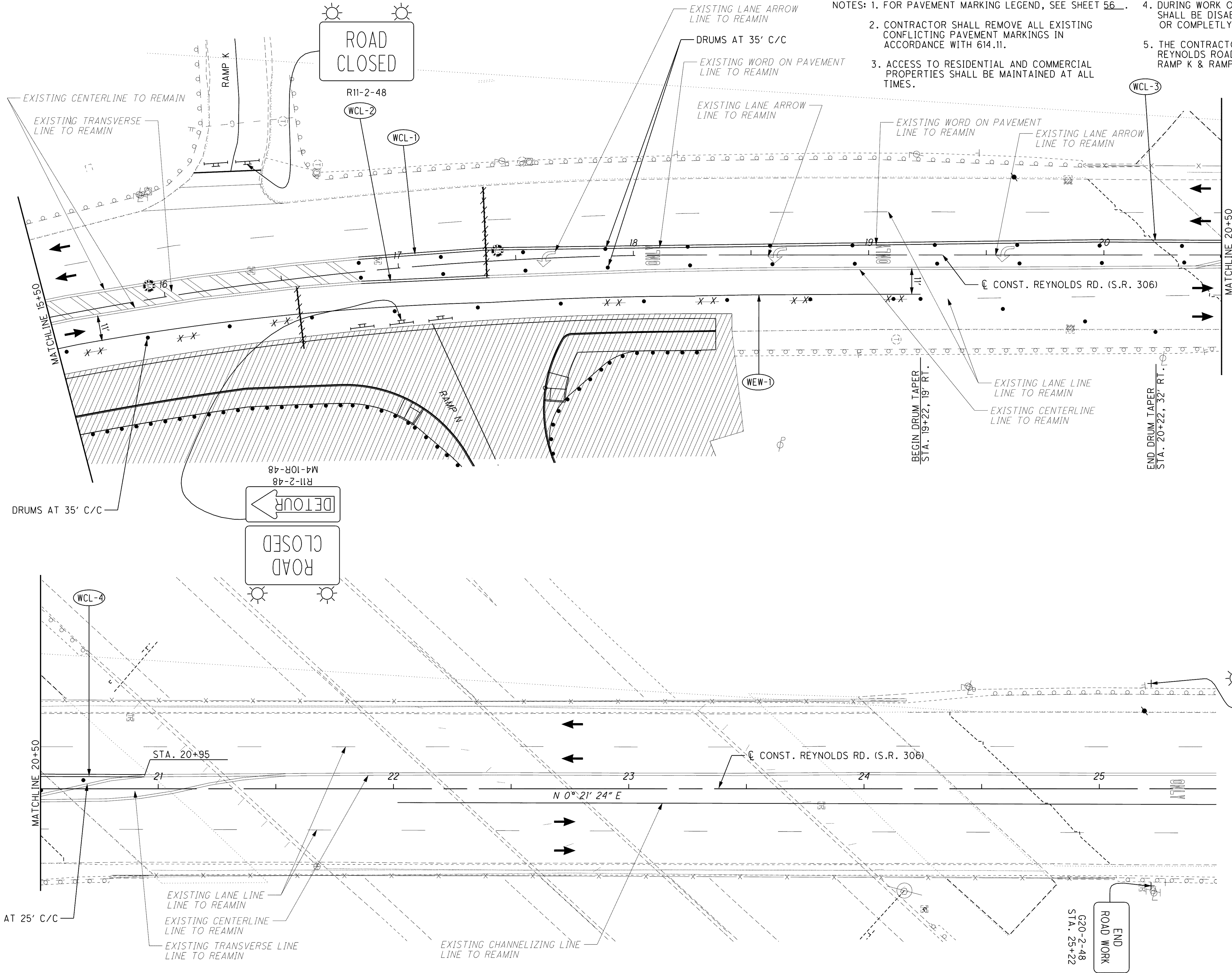


\\Akrn01\Data\Civil\2004108\00\13486\mot\sheets\13486MPRA2.dgn 6/16/2008 8:26:35 AM svarrechia



- NOTES: 1. FOR PAVEMENT MARKING LEGEND, SEE SHEET 56. 2. CONTRACTOR SHALL REMOVE ALL EXISTING CONFLICTING PAVEMENT MARKINGS IN ACCORDANCE WITH 614.11. 3. ACCESS TO RESIDENTIAL AND COMMERCIAL PROPERTIES SHALL BE MAINTAINED AT ALL TIMES. 4. DURING WORK ON RAMPS N AND K, THE SIGNAL SHALL BE DISABLED, EITHER IN FLASH MODE OR COMPLETELY REMOVED. 5. THE CONTRACTOR SHALL COORDINATE REYNOLDS ROAD CONSTRUCTION WITH RAMP K & RAMP N CONSTRUCTION.

CALCULATED
TRR
CHECKED
MAH

0 10 20 40
HORIZONTAL
SCALE IN FEET

**MAINTENANCE OF TRAFFIC - REYNOLDS RD. (S.R. 306)
STAGE 1 PHASE B STEP 5A - STA. 15+50 TO END**

ROAD WORK AHEAD

W20-1-36
STA. 25+22

END ROAD WORK

G20-2-48
STA. 25+22