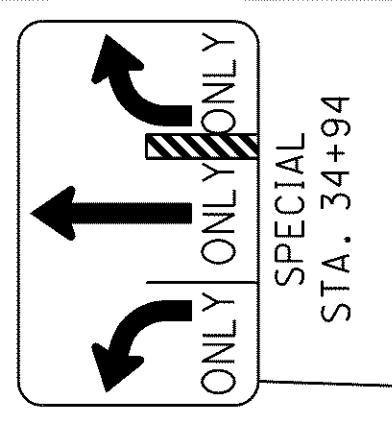
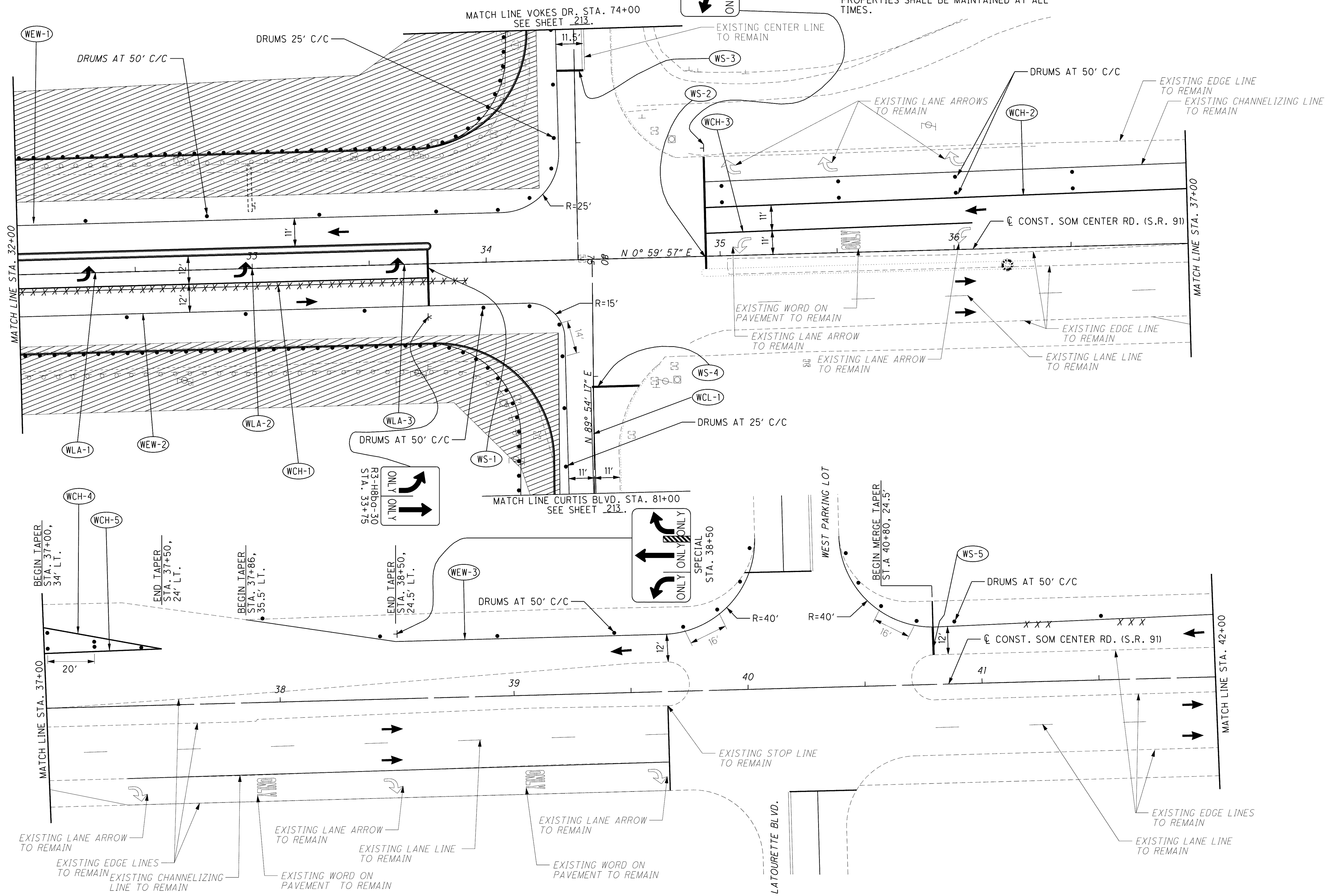
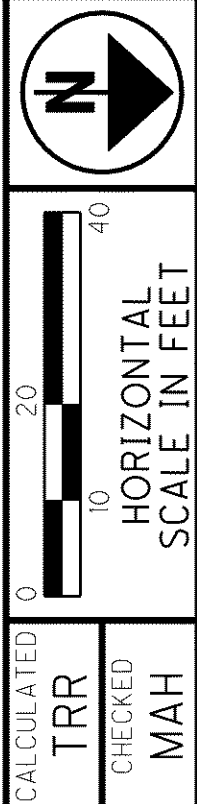


\\Akrn01\Civil\2004108\00\13486\mot\sheets\13486MP91B5.dgn 6/16/2008 8:12:38 AM svarrechia



- NOTES: 1. FOR PAVEMENT MARKING LEGEND SEE SHEET 56..
2. CONTRACTOR SHALL REMOVE ALL EXISTING CONFLICTING PAVEMENT MARKINGS IN ACCORDANCE WITH 614.11.
3. ACCESS TO RESIDENTIAL AND COMMERCIAL PROPERTIES SHALL BE MAINTAINED AT ALL TIMES.



MAINTENANCE OF TRAFFIC - SOM CENTER RD. (S.R. 91)
 STAGE 3 PHASE B STEP 2A - STA. 32+00 TO STA. 42+00

LAK-2-3.32
 210
 1679