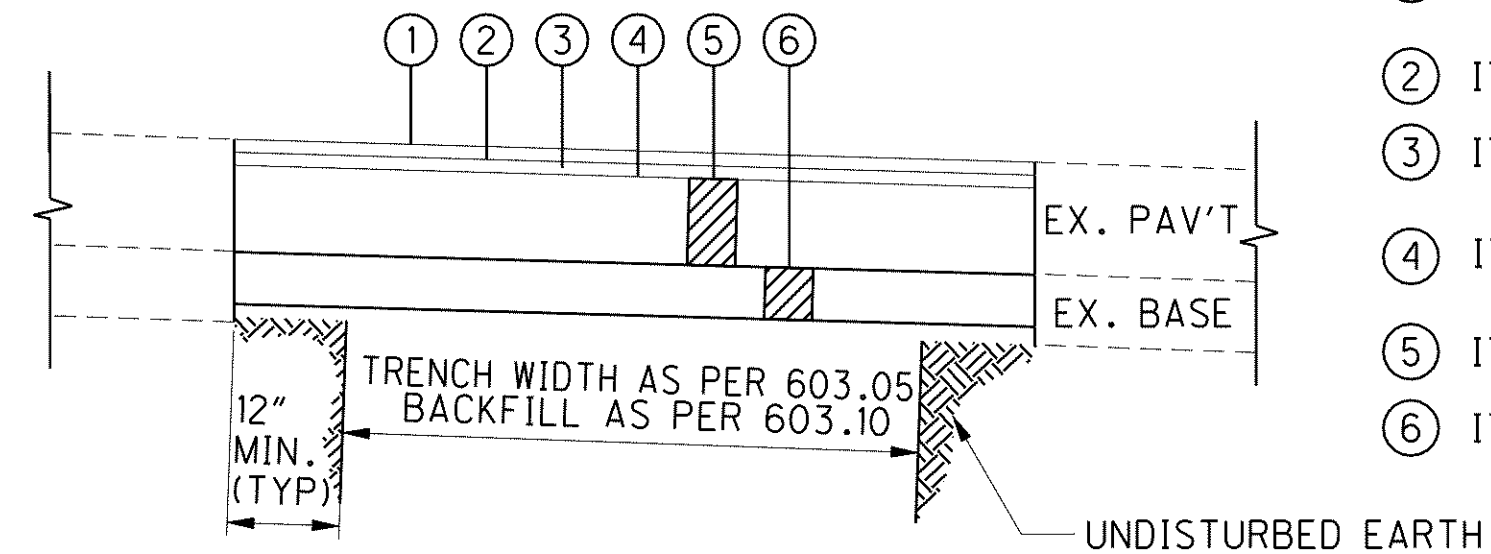


PAVEMENT REPLACEMENT OVER TRENCH  
STAGE 1 PHASE A STEPS 1-3



PAVEMENT REPLACEMENT OVER TRENCH  
STEVENS BOULEVARD

- ① ITEM 448 1.5" ASPHALT CONCRETE SURFACE COURSE, PG64-22 TYPE 1
- ② ITEM 407 TACK COAT @ 0.10 GAL./SY
- ③ ITEM 407 TACK COAT FOR INTERMEDIATE COURSE @0.05 GAL./SY
- ④ ITEM 448 1.5" ASPHALT CONCRETE INTERMEDIATE COURSE, PG64-22 TYPE 2
- ⑤ ITEM 302 ASPHALT CONCRETE BASE\*
- ⑥ ITEM 304 6" AGGREGATE BASE

\*MATCH EXISTING

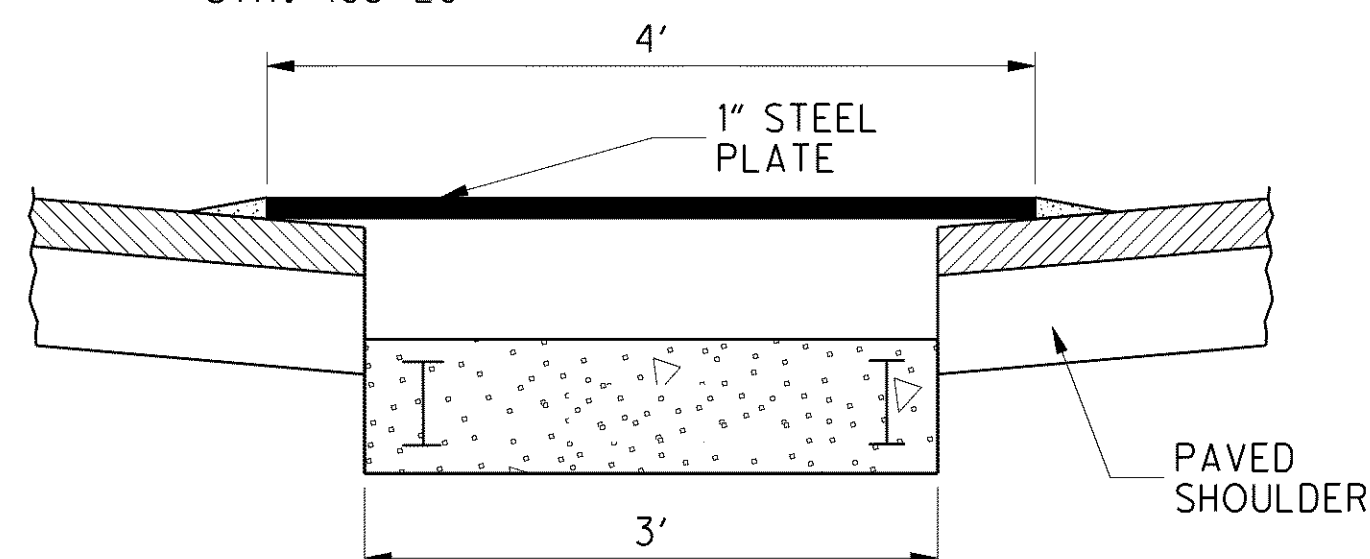
ASPHALT CONCRETE FOR MAINTAINING TRAFFIC RAMP TO STEEL PLATE (TYP. ALL SIDES)

INLET DETAIL WHEN BARRIER NOT CONSTRUCTED AT SAME TIME

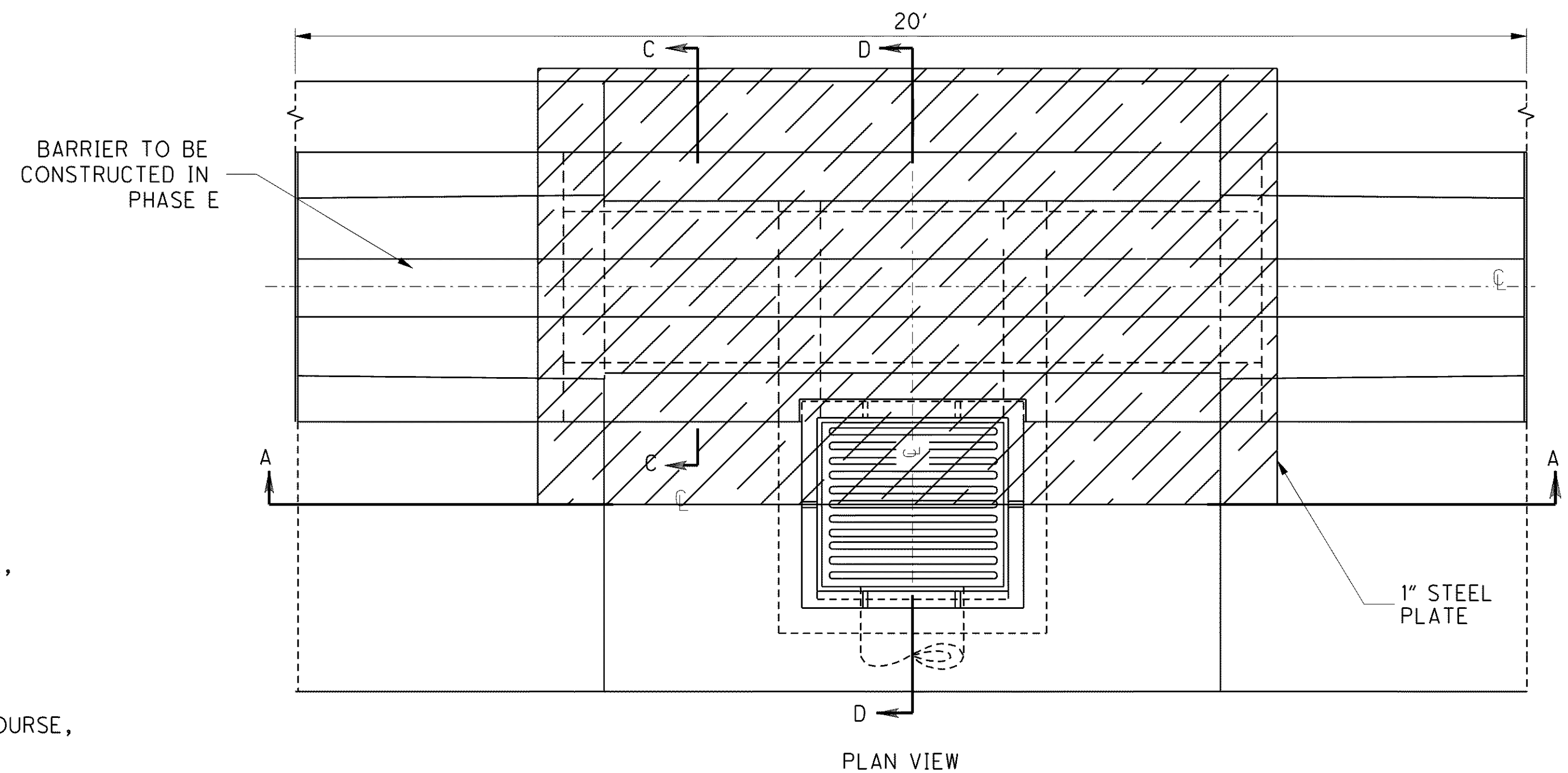
THE CONTRACTOR SHALL PLACE A 1" STEEL PLATE OVER THE INLET OPENING DURING CONSTRUCTION WHEN THE BARRIER IS CONSTRUCTED IN A LATER PHASE. THE CONTRACTOR SHALL ANCHOR THE STEEL PLATE WITH 3/4" COUNTER SINK EXPANSION ANCHOR BOLTS (MIN. 6) WITH 4 1/2" EMBEDMENT AND PLACE ASPHALT FOR MAINTAINING TRAFFIC ON ALL FOUR SIDES WITH THE EXCEPTION OVER THE GRATE. THE CONTRACTOR SHALL INSURE THAT THE PLATE REMAINS ANCHORED UNTIL THE BARRIER IS CONSTRUCTED. WHEN THE PLATE IS REMOVED THE CONTRACTOR SHALL GROUT THE HOLES LEFT BY THE ANCHOR BOLTS. ALL COSTS ASSOCIATED WITH PLACING AND REMOVING THE STEEL PLATE SHALL BE CONSIDERED INCIDENTAL TO THE LUMP SUM PRICE BID FOR ITEM 614 - MAINTAINING TRAFFIC. FOR ADDITIONAL DETAILS OF THE INLET SEE STANDARD CONSTRUCTION DRAWING I-2.1 AND I-2.3.

BELOW IS A LIST OF APPROXIMATE LOCATIONS, OTHER LOCATIONS ARE AS DIRECTED BY THE ENGINEER.

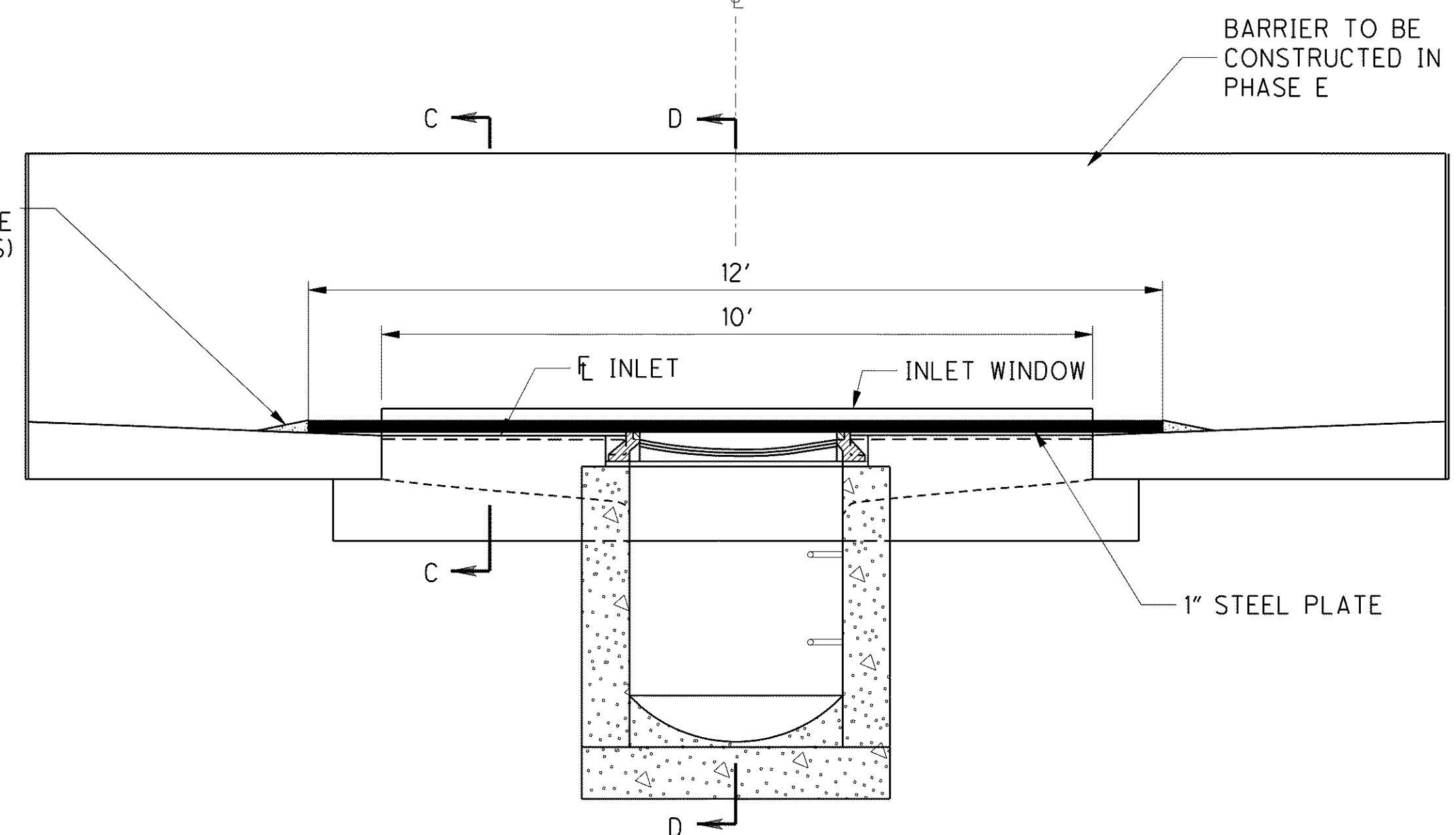
STAGE 1	STAGE 2	STAGE 2
STA. 447+60	STA. 351+50	STA. 407+60
STA. 486+40	STA. 358+83	STA. 412+60
STA. 490+10	STA. 364+20	STA. 417+60
STA. 491+68	STA. 370+00	STA. 422+60
STA. 493+20		



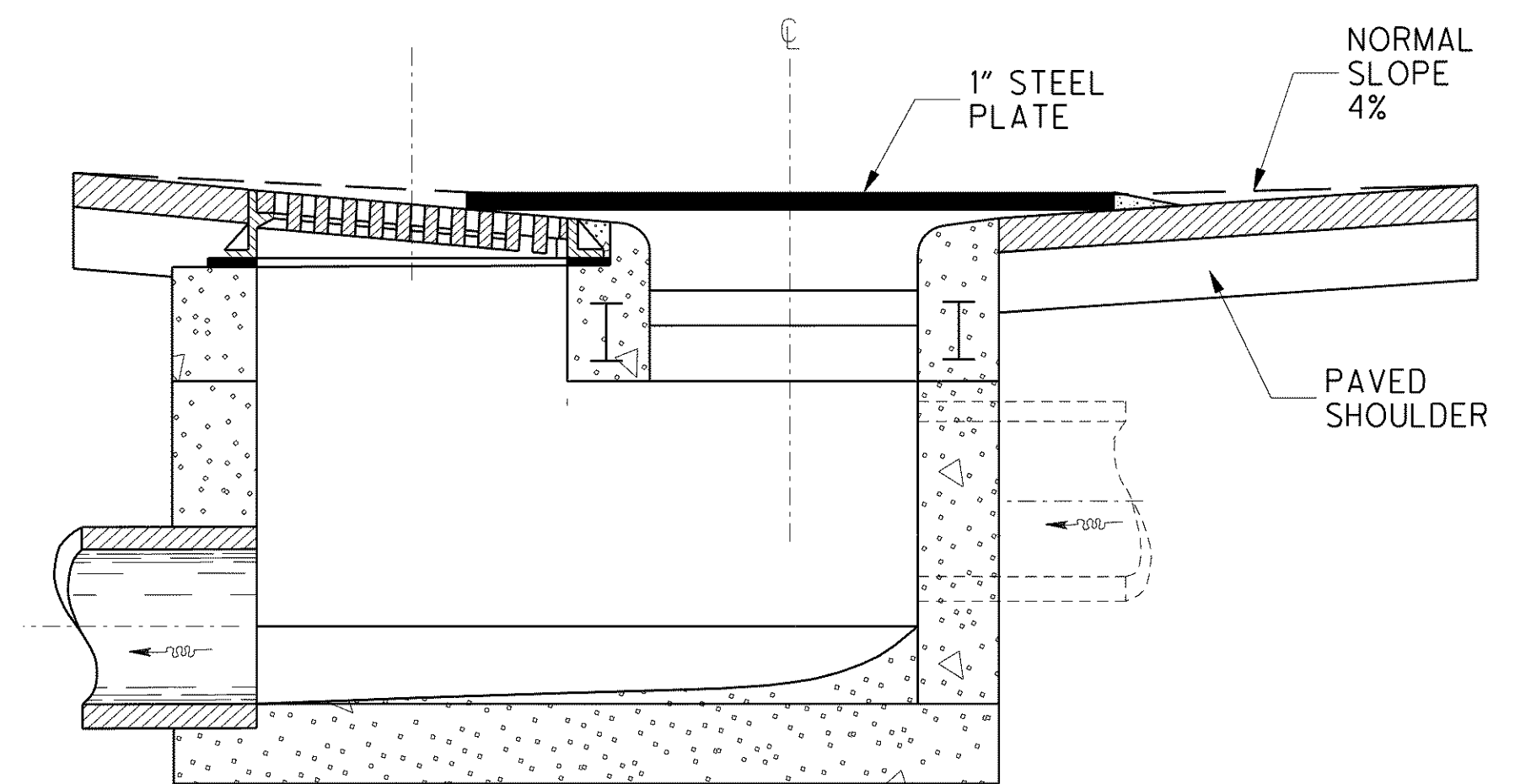
SECTION C-C  
SHOWN WITHOUT BARRIER FOR CLARITY



PLAN VIEW



SECTION A-A



SECTION D-D  
SHOWN WITHOUT BARRIER FOR CLARITY

CALCULATED  
DRJ  
CHECKED  
TMD

MAINTENANCE OF TRAFFIC MISCELLANEOUS DETAILS

LAK-2-3.32

o:\project\lak\13486\mot\sheet\13486MM15.dgn 6/23/2008 11:23:38 AM jmoderia