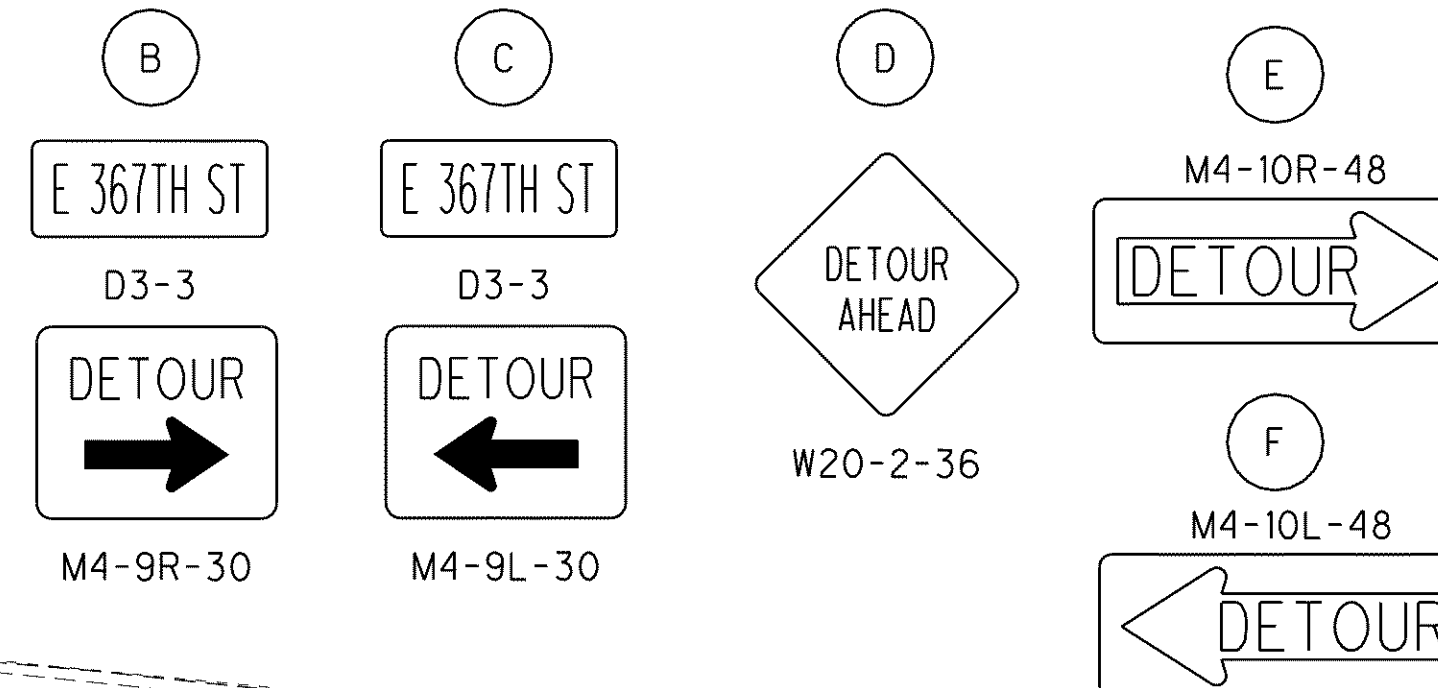
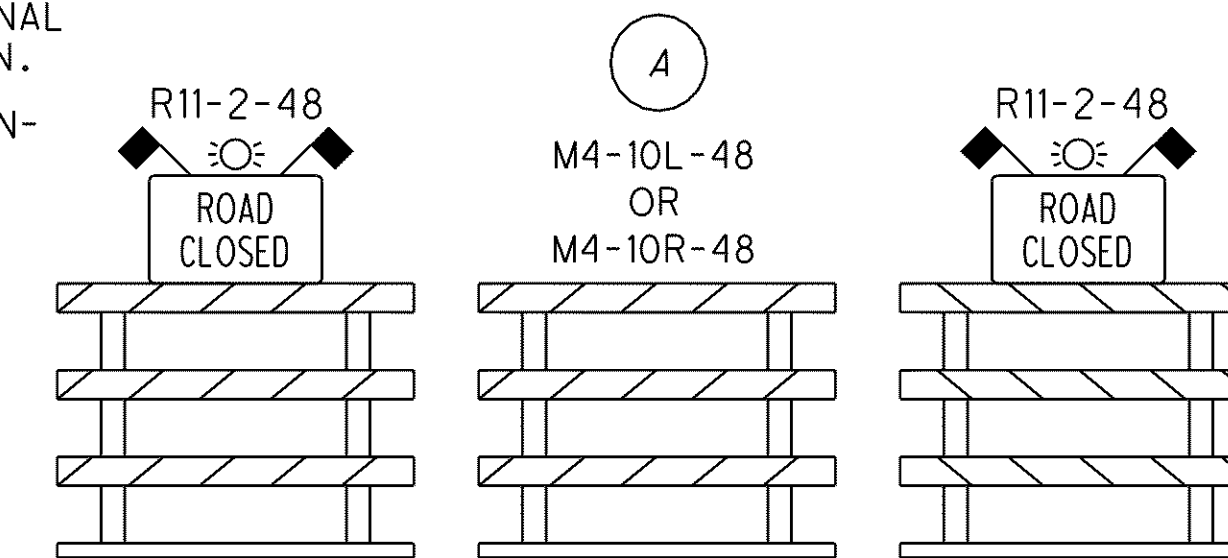


CURVE #1
 P.I. STA. 51+02.22
 D = 34° 23' 45" (RT)
 Dc = 50° 00' 00"
 R = 114.59'
 T = 35.47'
 L = 68.79'
 E = 5.36'

CURVE #2
 P.I. STA. 55+28.37
 D = 59° 32' 52" (LT)
 Dc = 54° 00' 00"
 R = 106.10'
 T = 60.70'
 L = 110.27'
 E = 16.14'

NOTES:
 SEE M.O.T. GENERAL NOTES FOR ADDITIONAL
 DETAILS AND SEQUENCE OF CONSTRUCTION.
 USE OF THE TEMPORARY E. 367TH ST. RUN-
 AROUND SHALL BE LIMITED TO 180
 CONSECUTIVE CALENDAR DAYS.

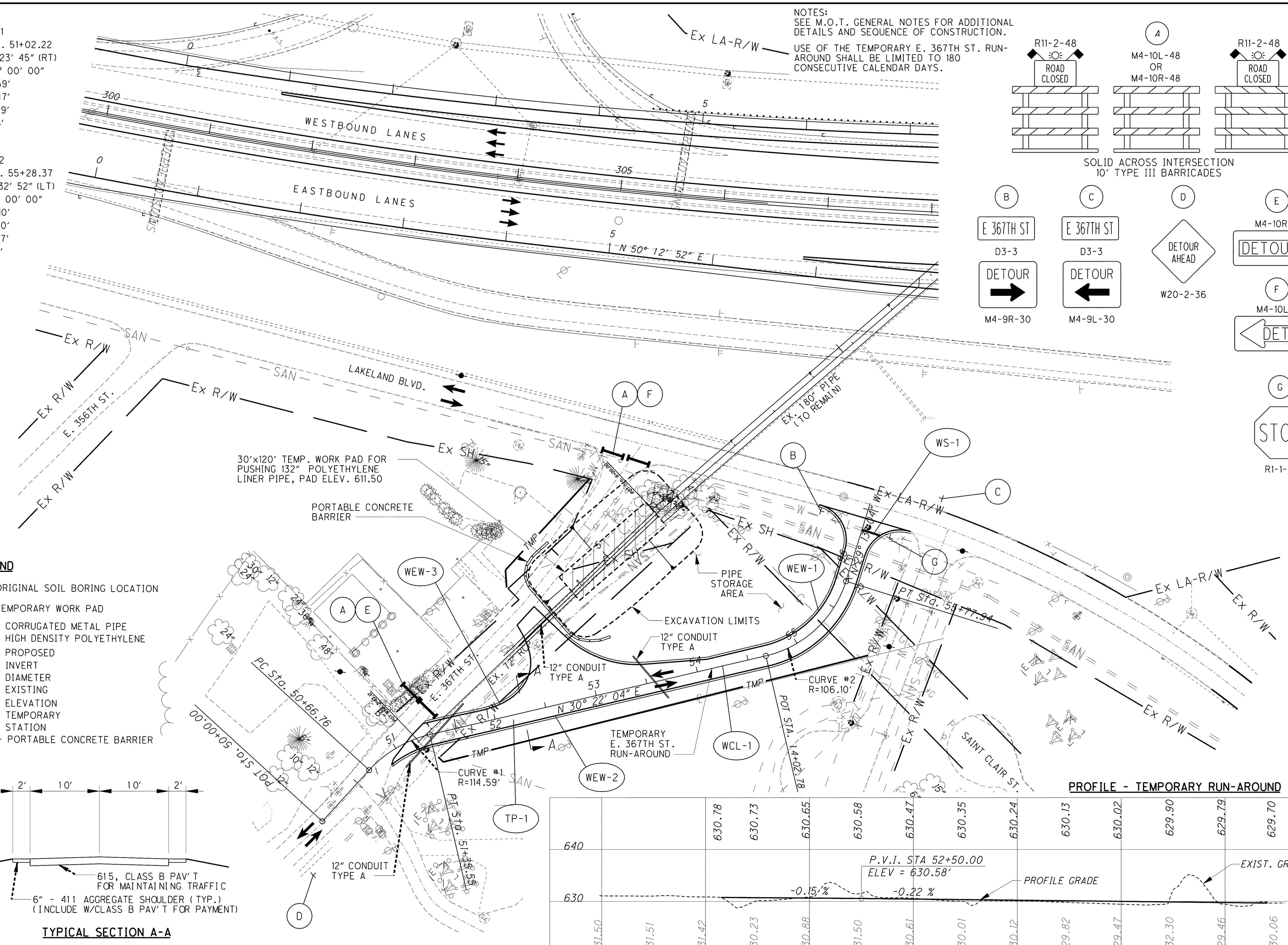


NOT TO SCALE
 HORIZONTAL SCALE IN FEET
 CALCULATED JMR CHECKED EJC

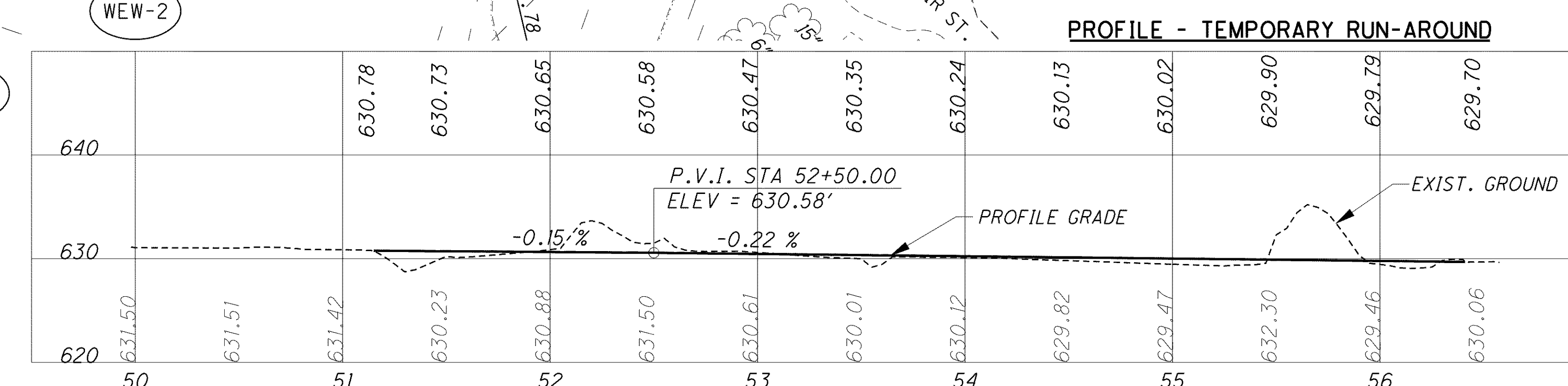
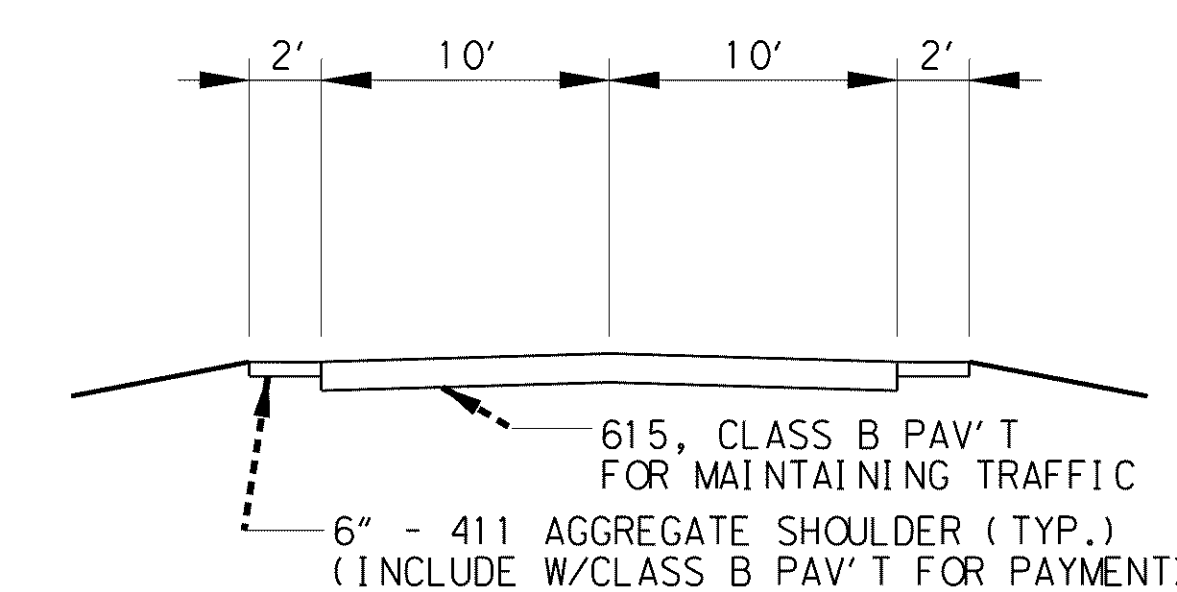
TEMPORARY RUN-AROUND E. 367TH ST. (PHASE B - STEP 5)

LAK-2-3.32

184
1679



- LEGEND**
- ORIGINAL SOIL BORING LOCATION
 - ▭ TEMPORARY WORK PAD
 - CMP - CORRUGATED METAL PIPE
 - HDPE - HIGH DENSITY POLYETHYLENE
 - PROP - PROPOSED
 - INV. - INVERT
 - DIA. - DIAMETER
 - EX. - EXISTING
 - ELEV. - ELEVATION
 - TEMP. - TEMPORARY
 - STA. - STATION
 - PCB - PORTABLE CONCRETE BARRIER



C:\Project\lak\13486\mot\sheet\13486md02.dgn 6/24/2008 12:58:36 PM djozity