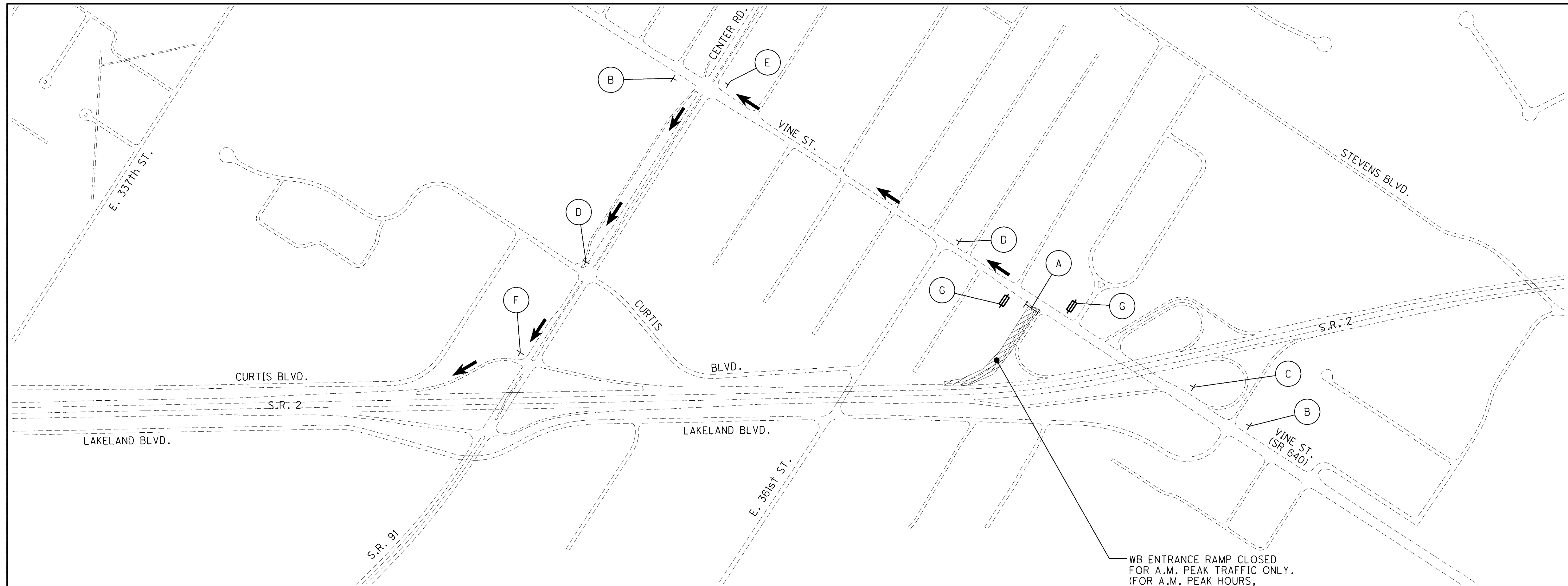


C:\Project\lak\13486\mot\sheet\13486md02B.dgn 6/24/2008 12:46:14 PM djozily



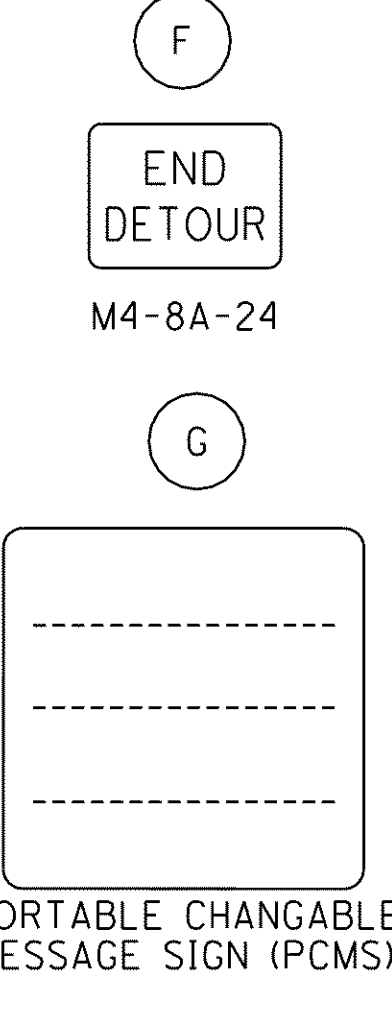
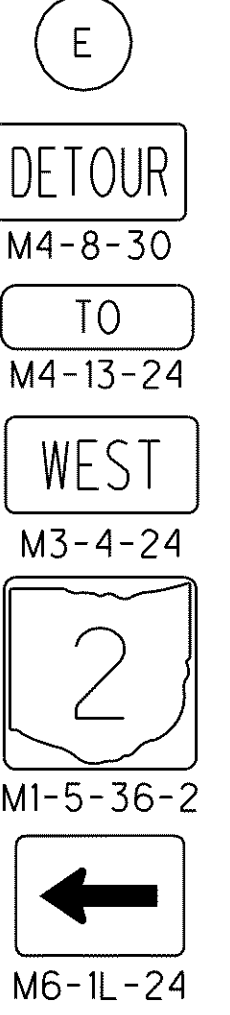
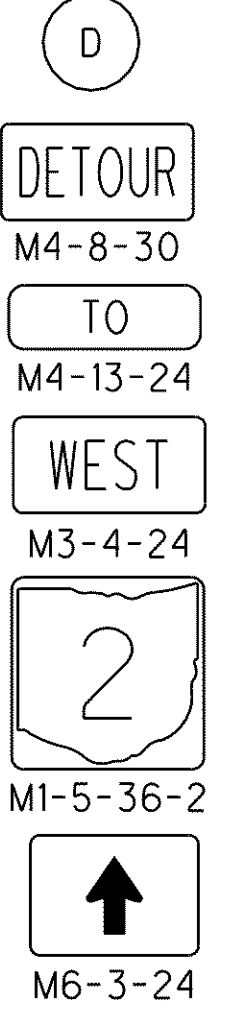
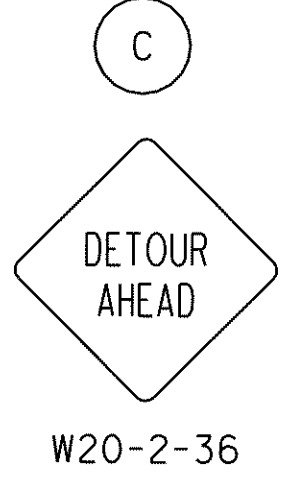
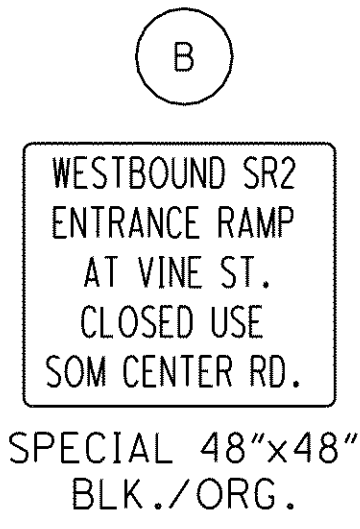
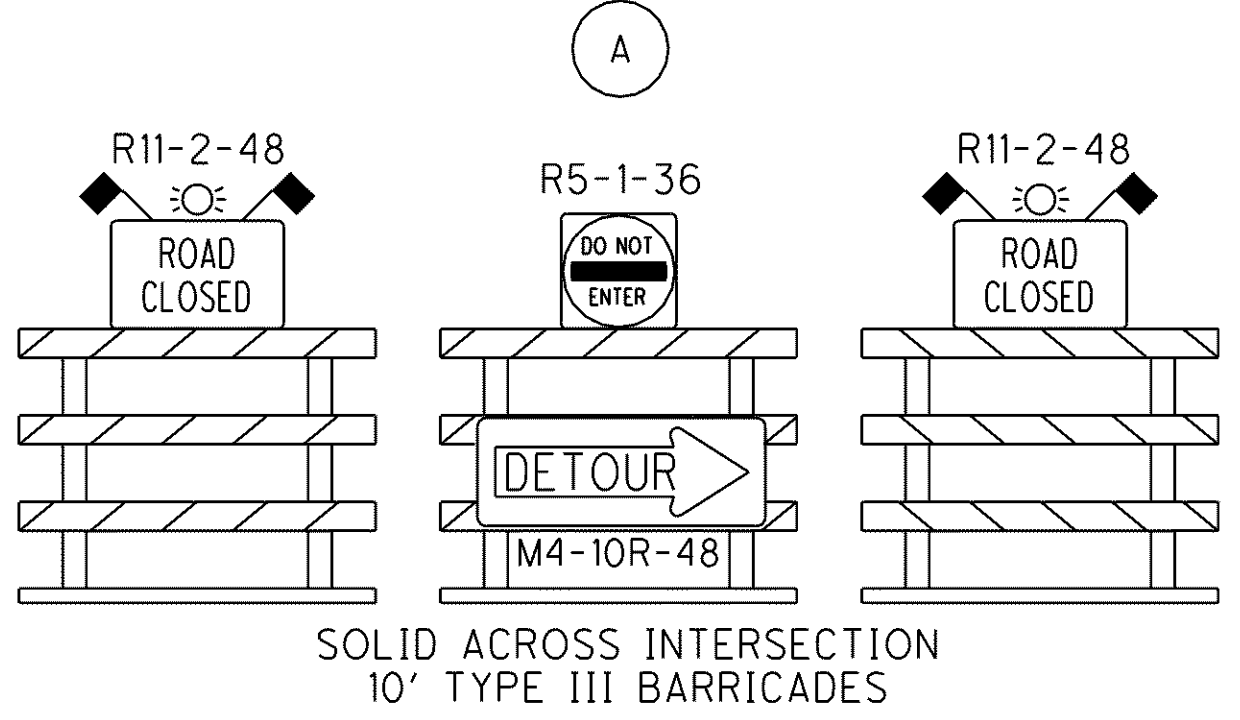
CALCULATED  
EJC  
CHECKED  
NAH

0 500 1000 2000  
HORIZONTAL  
SCALE IN FEET

**DETOUR PLAN - (STAGE 3, AM PEAK HOURS)  
VINE STREET - WESTBOUND ENTRANCE RAMP**

**LAK-2-3.32**

WB ENTRANCE RAMP CLOSED FOR A.M. PEAK TRAFFIC ONLY. (FOR A.M. PEAK HOURS, SEE MOT NOTES)



NOTES:  
DETOUR ROUTE MAY BE USED AT CONTRACTOR'S DISCRETION OR AS DIRECTED BY THE ENGINEER.

FOR PHASING OF THE VINE STREET RAMPS SEE M.O.T. GENERAL NOTES.

RAMP CLOSURES SHALL BE AS STD. DWG. MT-98.29 AND MT-101.60.

DETOUR SIGNING LOCATIONS SHALL BE AS PER OMUTCD.

AFFECTED SIGNS FOR THE VINE STREET INTERCHANGE SHALL BE OVERLAYED WITH A CLOSED PLAQUE WHEN THE DETOUR IS IN EFFECT.

WHENEVER THE CLOSURE OCCURS, THE TOTAL DETOUR SIGNING AS INDICATED ON THIS PLAN SHALL BE IMPLEMENTED.

DETOUR SIGNS SHALL BE UNCOVERED AND VISIBLE TO TRAFFIC ONLY WHEN THE RAMP CLOSURE IS IN EFFECT.

PLACE PORTABLE CHANGEABLE MESSAGE SIGNS ONE WEEK PRIOR TO CLOSURE. MESSAGE LINES SHOULD INDICATE FUTURE A.M. PEAK W.B. RAMP CLOSURE DATES, TIMES, AND ALTERNATE ACCESS ROUTE.