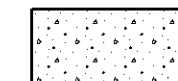
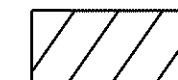


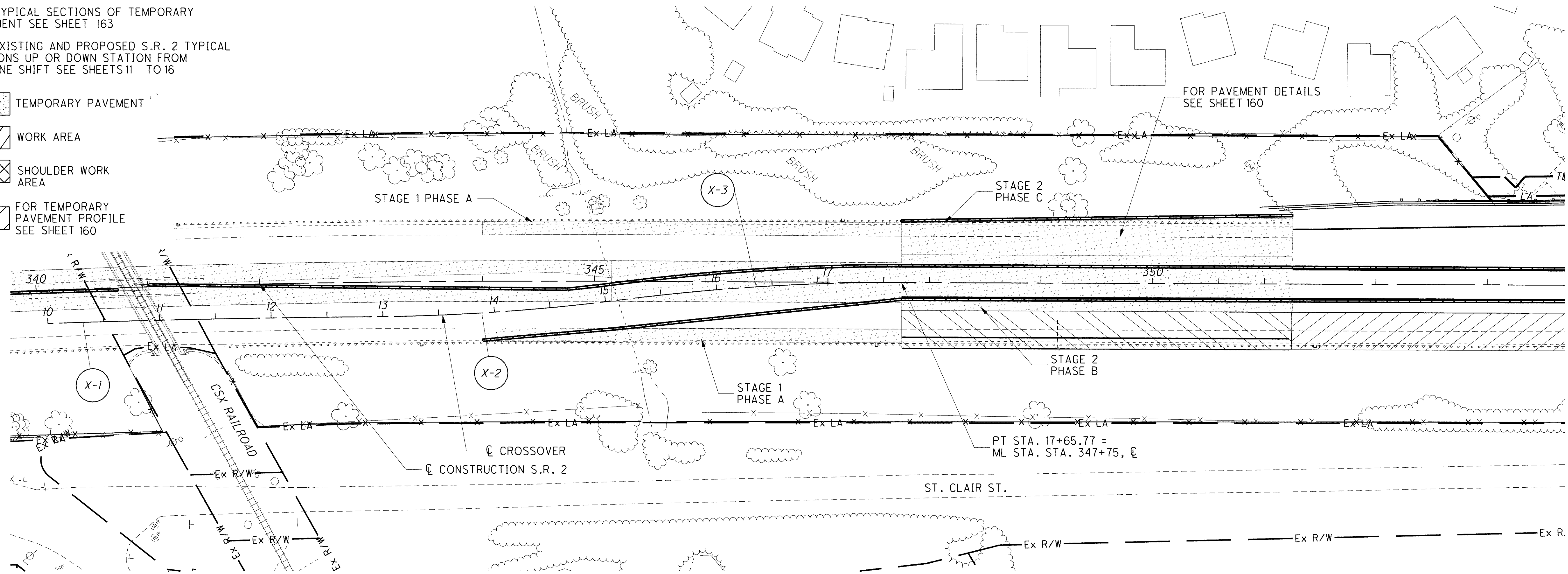


FOR MAINTENANCE OF TRAFFIC PHASING  
PLANS FOR STAGE 2 SEE SHEETS 131 TO 145

FOR TYPICAL SECTIONS OF TEMPORARY  
PAVEMENT SEE SHEET 163

FOR EXISTING AND PROPOSED S.R. 2 TYPICAL  
SECTIONS UP OR DOWN STATION FROM  
WB LANE SHIFT SEE SHEETS 11 TO 16

-  TEMPORARY PAVEMENT
-  WORK AREA
-  SHOULDER WORK AREA
-  FOR TEMPORARY PAVEMENT PROFILE SEE SHEET 160



**CROSSOVER CURVE DATA**

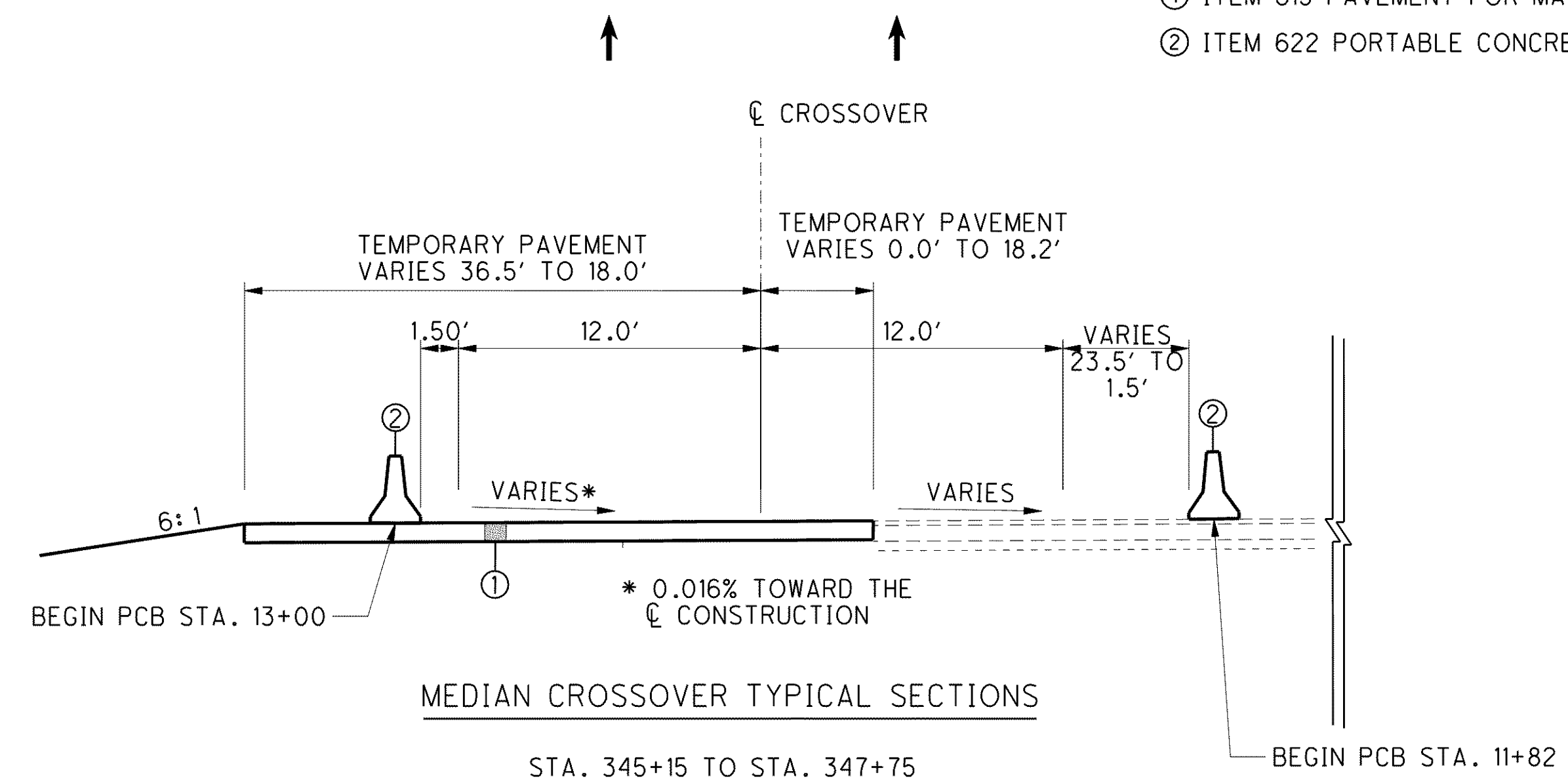
**X-1 CURVE DATA**  
 P.C. = STA. 10+00 =  
 ML STA. 340+09.43, 29.9' RT  
 P.I. = STA. 11+50.01 =  
 ML STA. 3641+04.56, 29.8' RT  
 PRC = STA. 13+00.01  
 D = 1° 29' 52" (RT)  
 Dc = 0° 29' 57"  
 R = 11475.72'  
 T = 150.01'  
 L = 300.01'  
 E = 0.98'

**X-2 CURVE DATA**  
 PRC STA. 13+00.01  
 P.I. = STA. 14+07.76 =  
 ML STA. 344+18.20, 30.2' RT  
 PRC STA. 15+15.30  
 D = 6° 27' 29" (LT)  
 Dc = 2° 59' 59"  
 R = 1910.00'  
 T = 107.76'  
 L = 215.29'  
 E = 3.04'

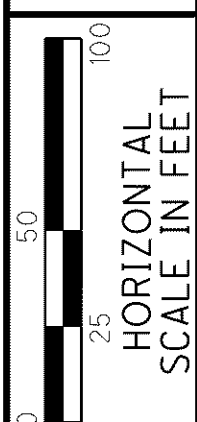
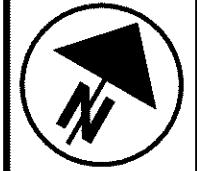
**X-3 CURVE DATA**  
 PRC = STA. 15+15.30  
 P.I. = STA. 16+40.71  
 ML STA. 346+49.59,  $\phi$   
 P.T. STA. 17+65.77 =  
 ML STA. 347+75.00,  $\phi$   
 D = 7° 30' 49" (RT)  
 Dc = 2° 59' 59"  
 R = 1910.00'  
 T = 125.42'  
 L = 250.48'  
 E = 4.11'

**LEGEND**

- ① ITEM 615 PAVEMENT FOR MAINTAINING TRAFFIC, CLASS A
- ② ITEM 622 PORTABLE CONCRETE BARRIER



FOR STA. 339+82 TO STA. 345+15 SEE SHEETS 94 AND 95.  
 FOR STA. 347+75 TO STA. 351+25 SEE SHEET 163



CALCULATED  
DRJ  
CHECKED  
TMD

**CROSS OVER DETAIL - STAGE 2 PHASE D  
EB CROSSOVER**

**LAK-2-3.32**

o:\project\lak\13486\mot\sheet\13486MM13.dgn 6/23/2008 11:22:47 AM jmadaria