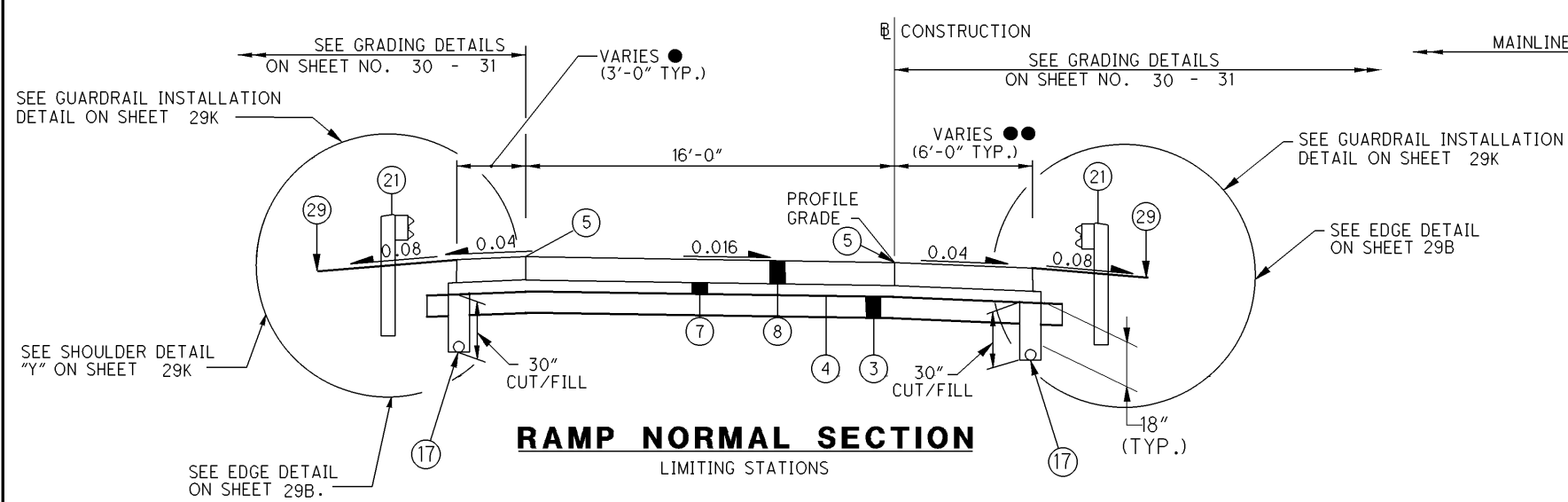


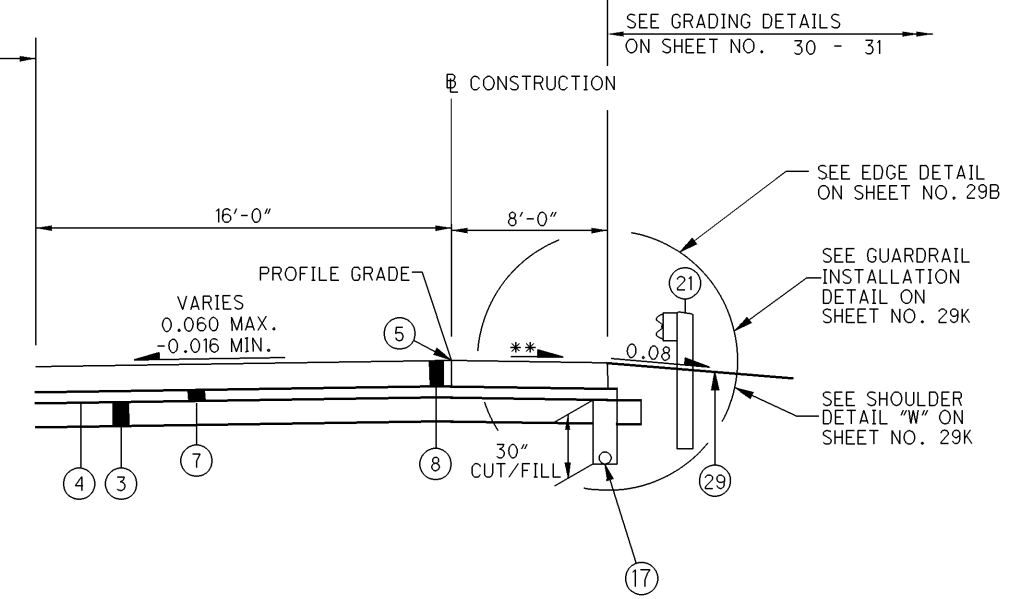
I:\PROJECTS\Pid13486\Addendum\Alternate bid\13486GY450.dgn 18-NOV-2008 2:10PM jgrmovse



**RAMP NORMAL SECTION**  
LIMITING STATIONS

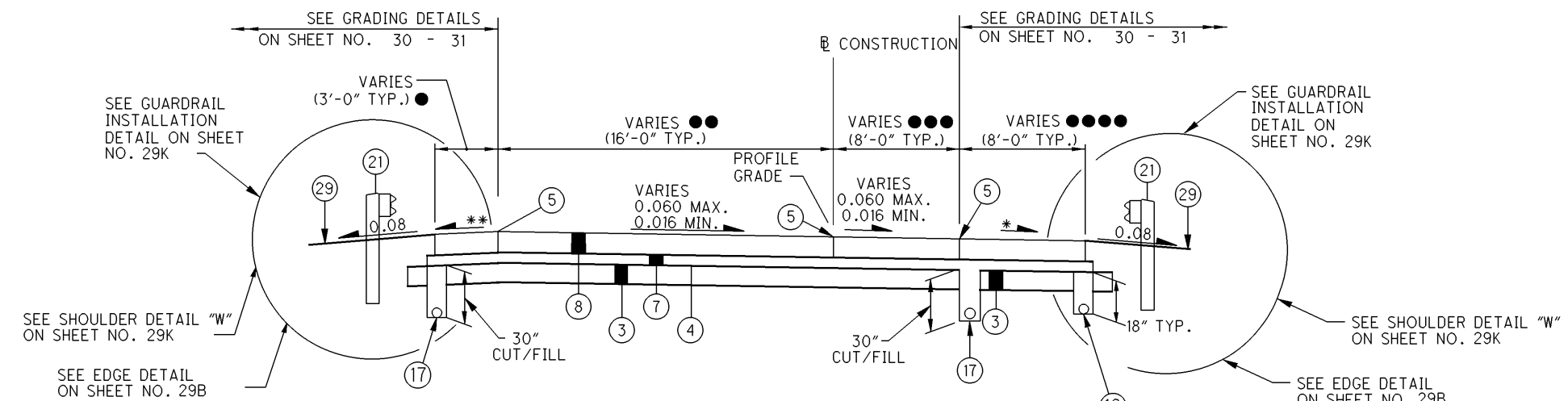
S.R. 306 RAMP K  
STA. 248+73.25 TO STA. 254+67.16 = 593.91 LIN. FT.

- S.R. 306 RAMP K  
0.00' WIDTH STA. 248+73.25 TO STA. 252+69.47  
6.00' WIDTH STA. 252+69.47 TO STA. 254+67.16
- S.R. 306 RAMP K  
8.00' WIDTH STA. 248+73.25 TO STA. 254+22.22  
WIDTH VARIES 8.00' TO 7.10' STA. 254+22.22 TO STA. 254+67.16



**RAMP SUPERELEVATED LEFT SECTION**  
LIMITING STATIONS

S.R. 306 RAMP K  
STA. 244+62.38 TO STA. 248+73.25 = 410.87 LIN. FT.



**RAMP SUPERELEVATED RIGHT SECTION**  
LIMITING STATIONS

S.R. 306 RAMP K  
STA. 254+67.16 TO STA. 263+34.22 = 867.06 LIN. FT.  
STA. 263+34.22 TO STA. 263+61.59 = INTERSECTION AREA, SEE DETAIL ON SHEET NO. 830

- S.R. 306 RAMP K  
6.00' WIDTH STA. 254+67.16 TO STA. 258+00.00  
WIDTH VARIES 6.00' TO 4.00' STA. 258+00 TO STA. 258+50.00  
4.00' WIDTH STA. 258+50.00 TO STA. 262+93.46  
WIDTH VARIES 4.00' TO 6.00' STA. 262+93.46 TO STA. 263+03.41  
6.00' WIDTH STA. 263+03.41 TO STA. 263+34.22
- S.R. RAMP K  
16.00' WIDTH STA. 254+67.16 TO STA. 258+00.00  
WIDTH VARIES 16.00' TO 24.00' STA. 258+00.00 TO STA. 258+50.00  
24.00' WIDTH STA. 258+50.00 TO STA. 263+34.22
- S.R. 306 RAMP K  
0.00' WIDTH STA. 254+67.16 TO STA. 258+75.00  
WIDTH VARIES 0.00' TO 12.00' STA. 258+75.00 TO STA. 259+25.00  
12.00' WIDTH STA. 259+25.00 TO STA. 259+75.00  
WIDTH VARIES 12.00' TO 24.00' STA. 259+75.00 TO STA. 260+25.00  
24.00' WIDTH STA. 260+25.00 TO STA. 263+34.22
- S.R. 306 RAMP K  
WIDTH VARIES 7.10' TO 6.00' STA. 254+67.16 TO STA. 255+22.22  
6.00' WIDTH STA. 255+22.22 TO STA. 262+06.19  
WIDTH VARIES 6.00' TO 12.00' STA. 262+06.19 TO STA. 262+36.19  
12.00' WIDTH STA. 262+36.19 TO STA. 263+34.22

\* 0.04 OR RATE OF PAVEMENT SLOPE IF GREATER.  
\*\* FOR HIGH SIDE SHOULDER SLOPES, SEE SHOULDER DETAIL "Z" ON SHEET 29K  
FOR EXISTING LEGEND, SEE SHEET 11  
FOR PROPOSED LEGEND, SEE SHEET 29A

**PROPOSED TYPICAL SECTIONS**  
**S.R. 306 RAMP K**  
**LAK-2-3.32**  
 (29L)  
 1679