

**CURTIS BLVD. CURVE DATA**  
P.I. STA. 82+63.30  
 $\Delta = 11^\circ 34' 28''$  (RT)  
Dc = 1° 00' 00"  
R = 5,729.48'  
T = 580.69'  
L = 276.21'  
E = 12.15'

**SR 91 CURVE DATA**  
P.I. STA. 1+67.00  
 $\Delta = 20^\circ 23' 52''$  (LT)  
Dc = 28° 38' 52"  
R = 200.00'  
T = 35.98'  
L = 71.20'  
E = 3.21'

**SR 91 RAMP A CURVE DATA**  
P.I. STA. 79+74.21  
 $\Delta = 14^\circ 00' 39''$  (LT)  
Dc = 1° 30' 00"  
R = 3,820.00'  
T = 469.40'  
L = 934.12'  
E = 28.73'

**SR 91 RAMP B SPIRAL DATA**  
P.I. STA. 172+22.75  
Ls = 200.00'  
 $\theta s = 4^\circ 00' 00''$   
LT = 133.37'  
ST = 66.70'  
x = 199.90'  
y = 4.65'  
k = 99.98'  
p = 1.16'

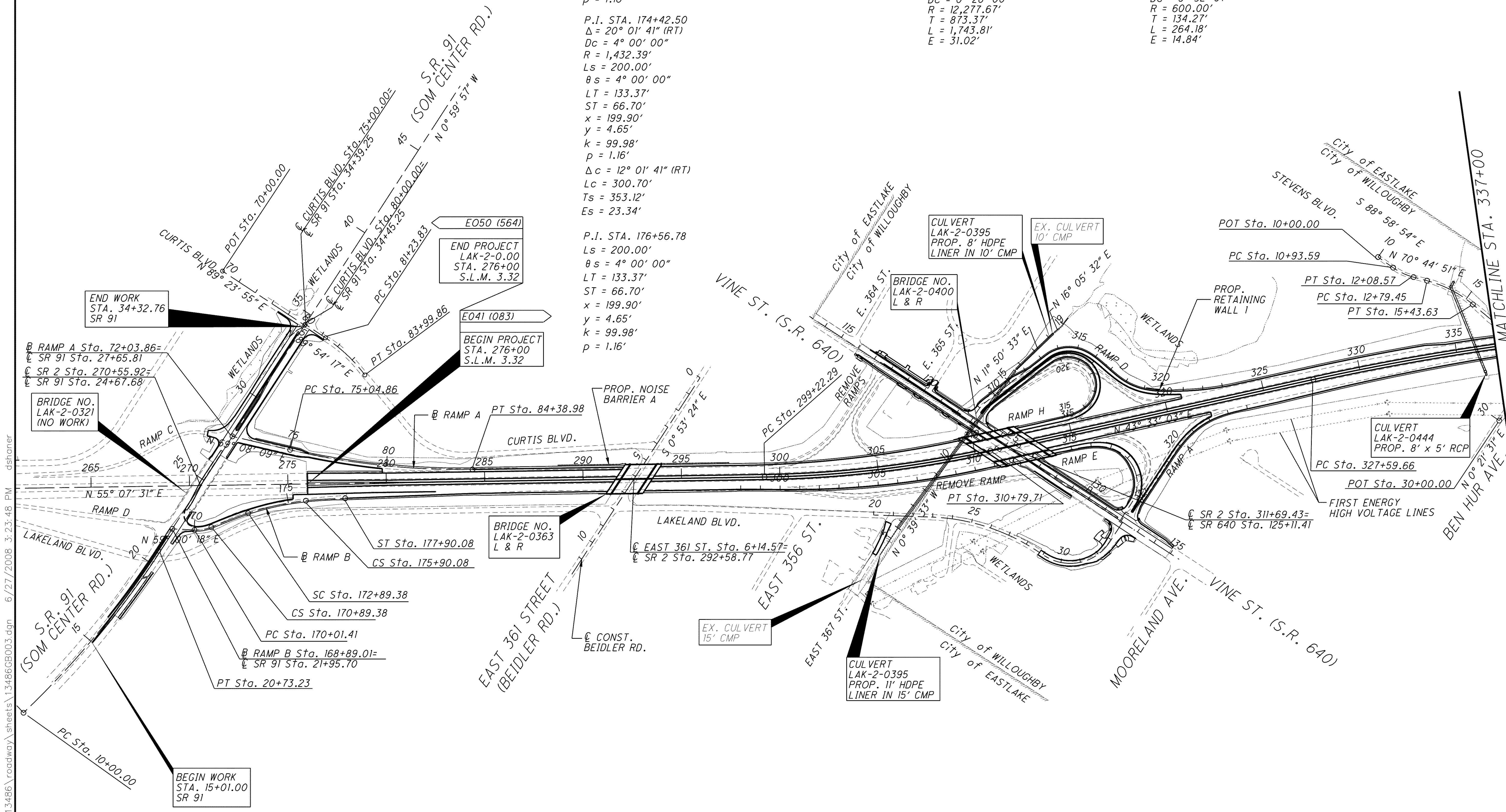
**SR 91 RAMP B CURVE DATA**  
P.I. STA. 170+46.12  
 $\Delta = 25^\circ 12' 04''$  (LT)  
Dc = 28° 38' 52"  
R = 200.00'  
T = 44.71'  
L = 87.97'  
E = 4.94'

**SR 2 CURVE DATA**  
P.I. STA. 305+02.97  
 $\Delta = 11^\circ 34' 28''$  (LT)  
Dc = 1° 00' 00"  
R = 5,729.48'  
T = 580.69'  
L = 1,157.42'  
E = 29.35'

P.I. STA. 336+33.02  
 $\Delta = 8^\circ 08' 16''$  (RT)  
Dc = 0° 28' 00"  
R = 12,277.67'  
T = 873.37'  
L = 1,743.81'  
E = 31.02'

**STEVENS BLVD. CURVE DATA**  
P.I. STA. 11+51.69  
 $\Delta = 20^\circ 16' 15''$  (LT)  
Dc = 17° 37' 46"  
R = 325.00'  
T = 58.10'  
L = 114.98'  
E = 5.15'

P.I. STA. 14+13.711  
 $\Delta = 25^\circ 13' 39''$  (RT)  
Dc = 9° 32' 57"  
R = 600.00'  
T = 134.27'  
L = 264.18'  
E = 14.84'



NOTE: FOR VINE ST. INTERCHANGE GEOMETRICS SEE SHEET 7

C:\Project\LAK\13486\roadway\sheet\13486GB003.dgn 6/27/2008 3:23:48 PM dshamer