

REINFORCING STEEL FOR APPROACH SLABS											
MARK	REQ'D REAR	REQ'D FWD.	TOTAL	LENGTH	WEIGHT	TYPE	A	B	G	VARIES BY	NO. OF EACH
AP801	89	74	163	25'-9"		2	1'-1"	24'-8"	0		
AP802	2	-	2	5'-3"		S					
AP803	2	1	3	29'-1"		2	1'-1"	28'-0"	0		
AP804	2	-	2	20'-7"		2	1'-1"	19'-6"	0		
AP805	67	56	123	1'-6"		S					
AP806	-	10	10	25'-10 7/31'-10"		2	1'-1"	24'-9 7/30'-9"	0	8"	1
AP807	-	4	4	23'-7 7/26'-1"		2	1'-1"	22'-6 7/25'-0"	0	10"	1
AP808	-	3	3	23'-10 7/25'-4"		2	1'-1"	22'-9 7/24'-3"	0	9"	1
AP809	-	4	4	21'-4 7/22'-10"		2	1'-1"	20'-3 7/21'-9"	0	6"	1
AP501	22	20	42	36'-2"		S					
AP502	6	-	6	37'-0"		S					
AP503	3	3	6	4'-5"		-		1'-1"			
AP504	1	1	2	6'-4"		-		3'-0"			
AP505	2	-	2	4'-0"		S					
AP506	-	6	6	39'-2"		S					
AP507	-	2	2	34'-0"		S					
AP508	-	6	6	3'-0 7/8'-5"		S				13"	1

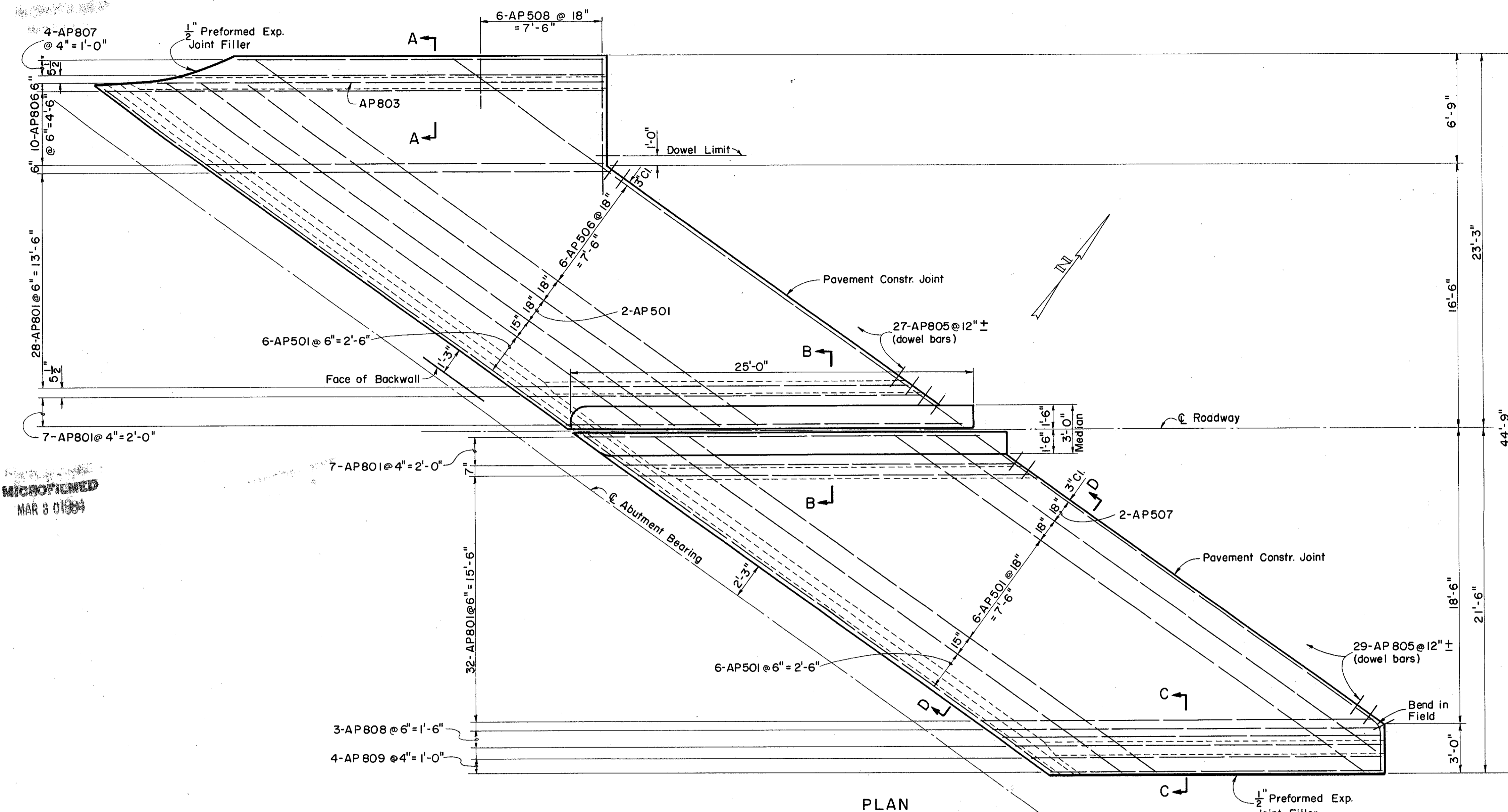
NOTES

Bar Size is indicated in the bar mark. The first digit where three digits are used, and the first two digits where four digits are used indicate the size of the bar. For example A 700 is a No. 7 size bar and A1014 is a No. 10 size bar.

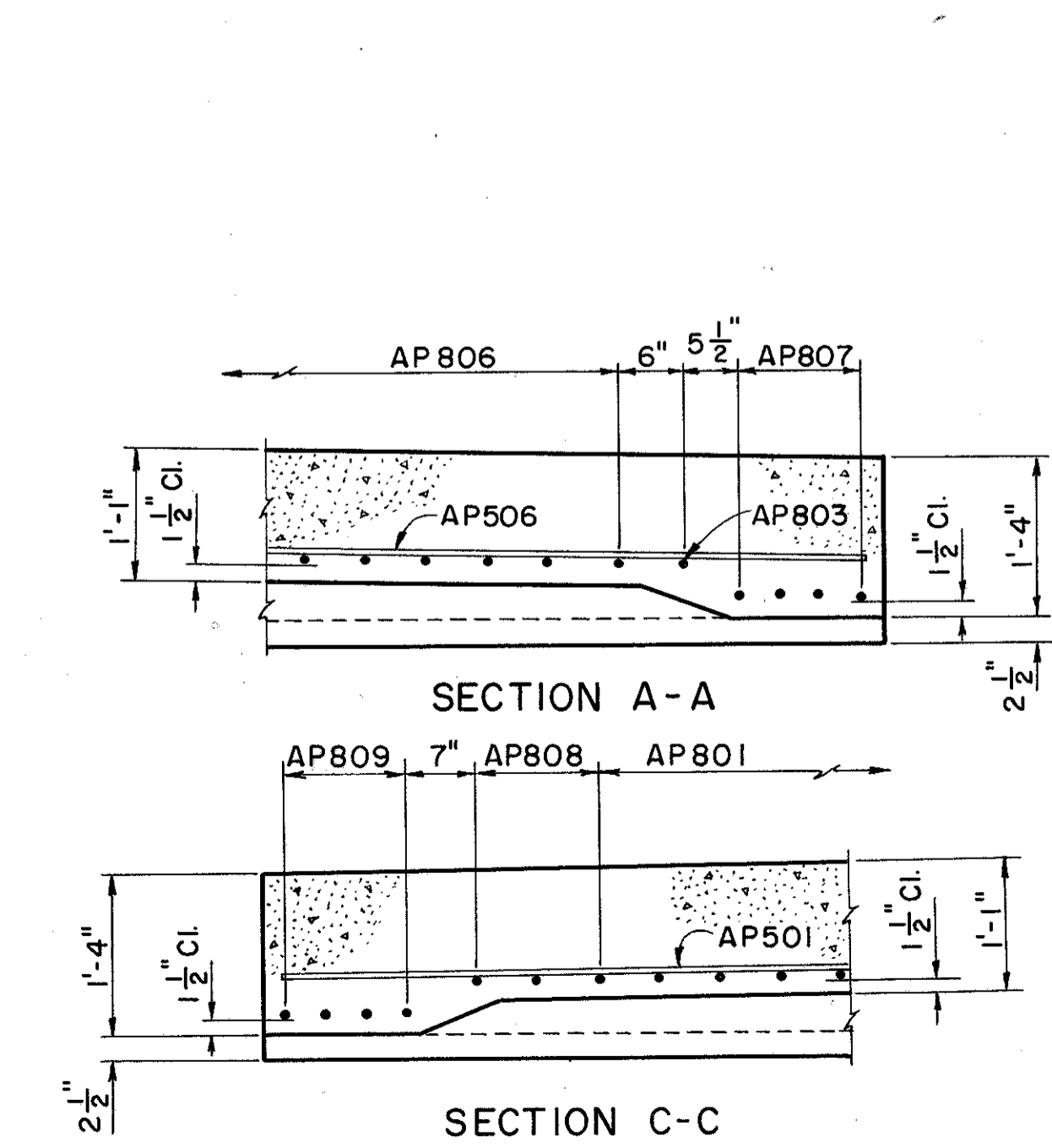
All dimensions are out to out of the bar.

Type "S" is straight bar.

For additional details see Rear Approach Slab Details Sheet.

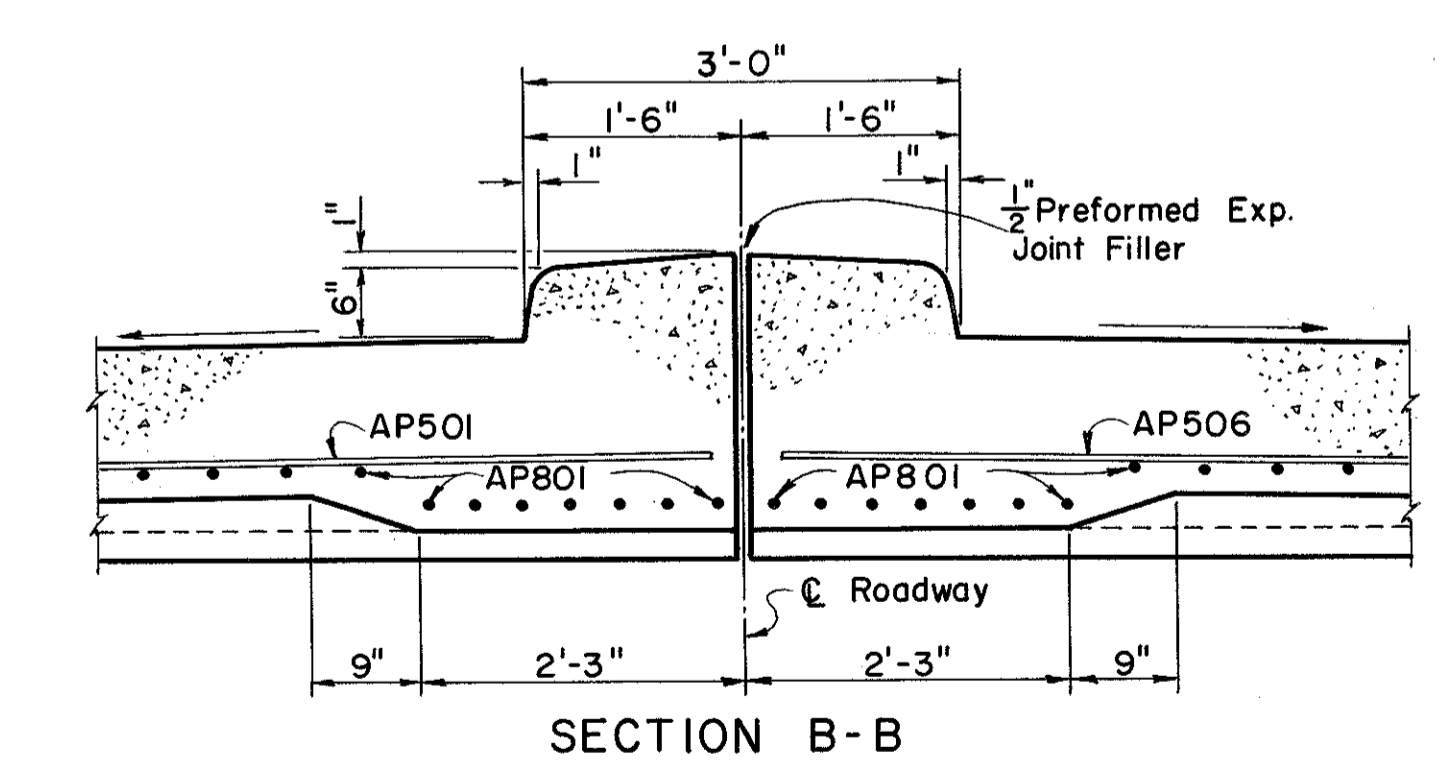


PLAN

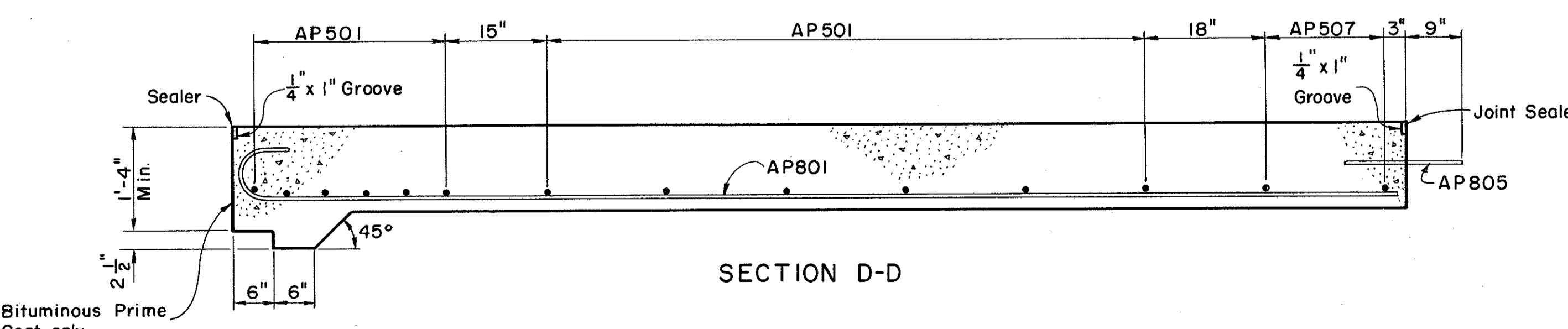


SECTION A-A

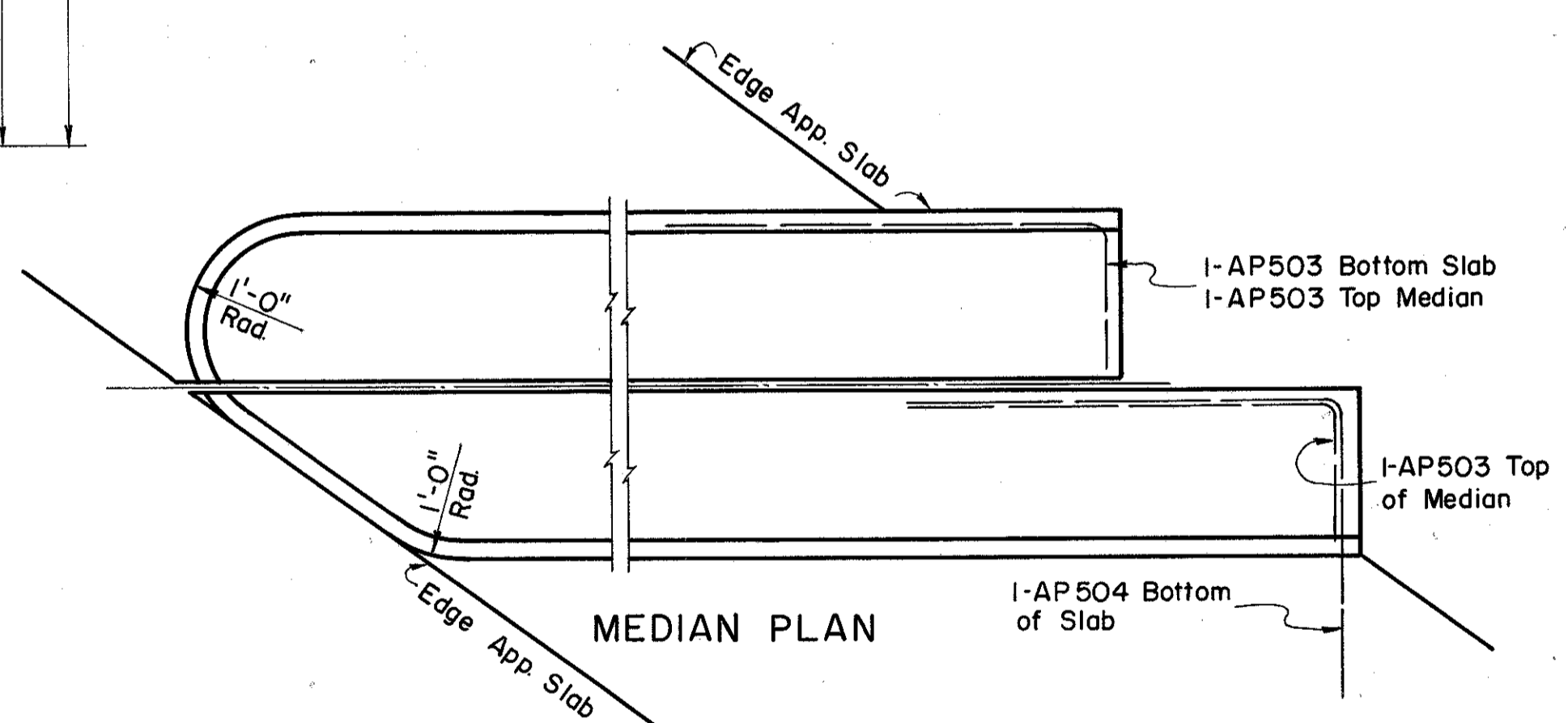
SECTION C-C



SECTION B-B



SECTION D-D



MEDIAN PLAN

PREPARED BY
CAPITOL ENGINEERING ASSOCIATES, DILLSBURG, PA.
FOR
STATE OF OHIO
DEPARTMENT OF HIGHWAYS
DIVISION OF DESIGN AND CONSTRUCTION
BUREAU OF BRIDGES

FORWARD APPROACH SLAB DETAILS
BRIDGE NO. LAK-2-1862
RELOC. S.R. 2 UNDER RECONSTR. U.S. 20
LAKE COUNTY
STA. 99 + 73.07

DESIGNED	DRAWN	TRACED	CHECKED	REVIEWED	DATE	REVISED
	M.J.F.	F.W.B.	L.L.D.	G.S.W.		
	L.L.D.		M.J.F.	M.C.P.		

MICROFILMED
MAR 8 0199