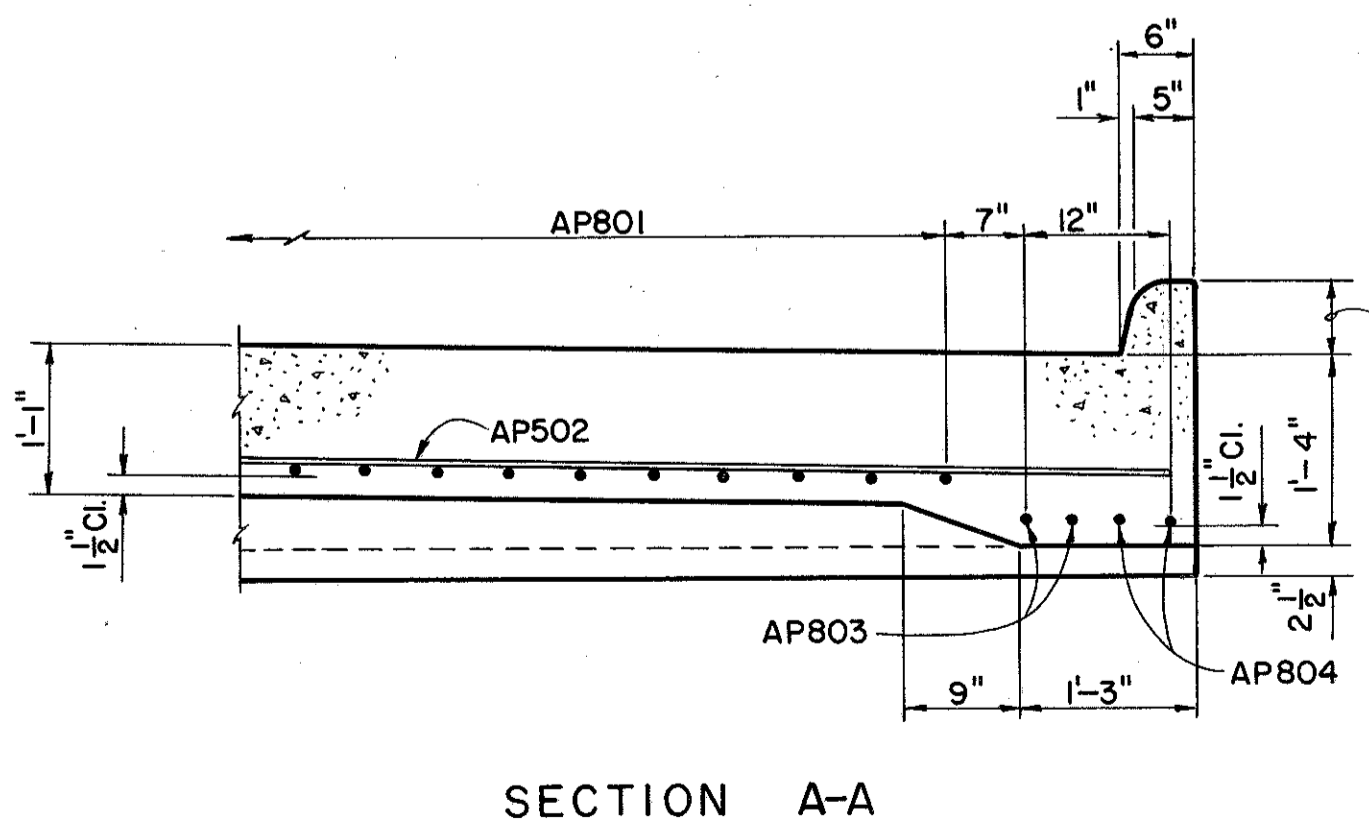
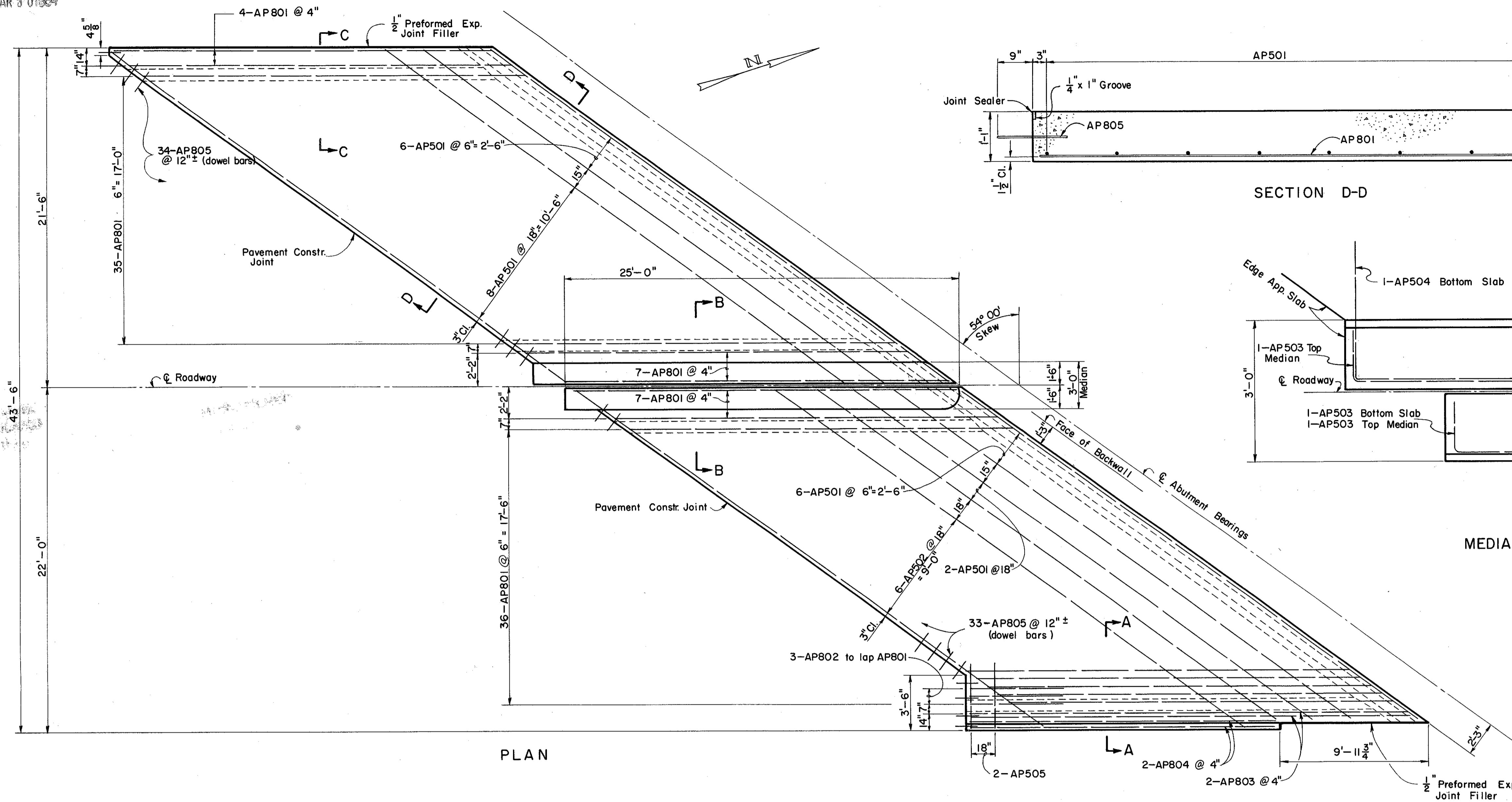


MICROFILMED
MAR 8 1984

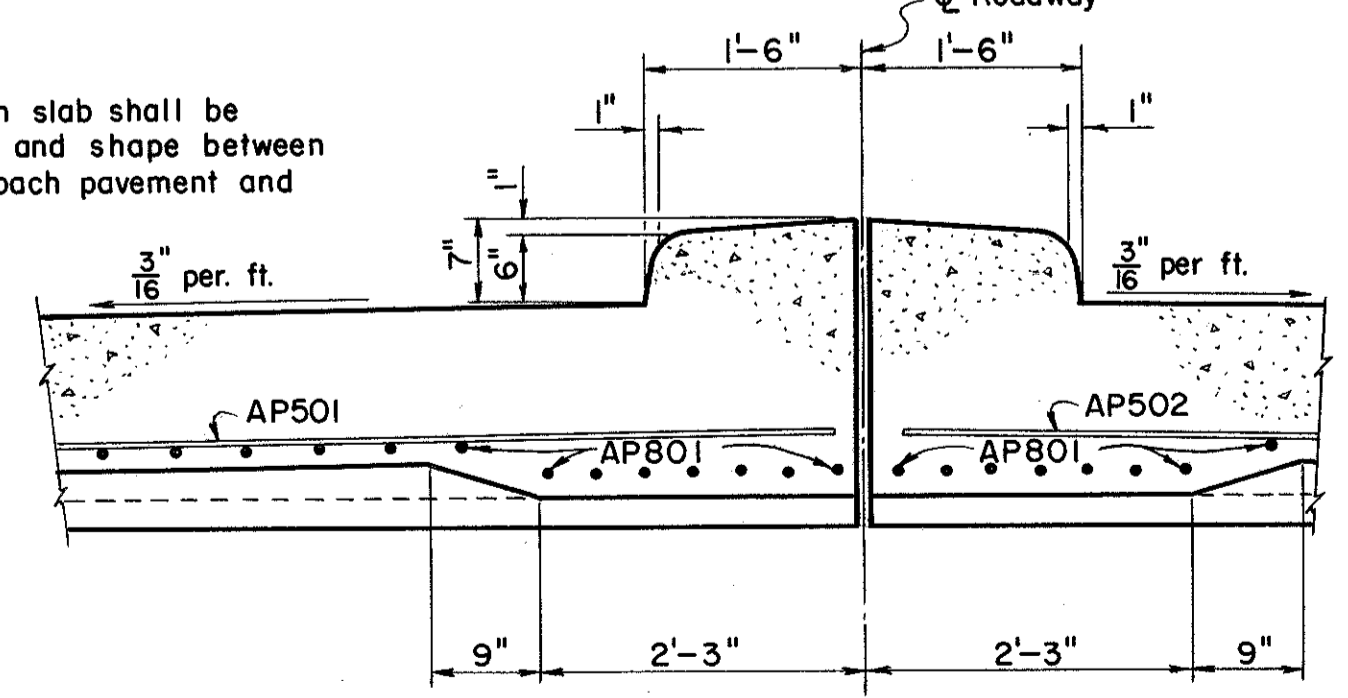
| | | | |
|-------------------|-------|---------------------------|------------|
| FED. RD. DIVISION | STATE | PROJECT | |
| 2 | OHIO | LAKE COUNTY LAK-2-1649 | 290 313 |

LAKE COUNTY
LAK-2-1649

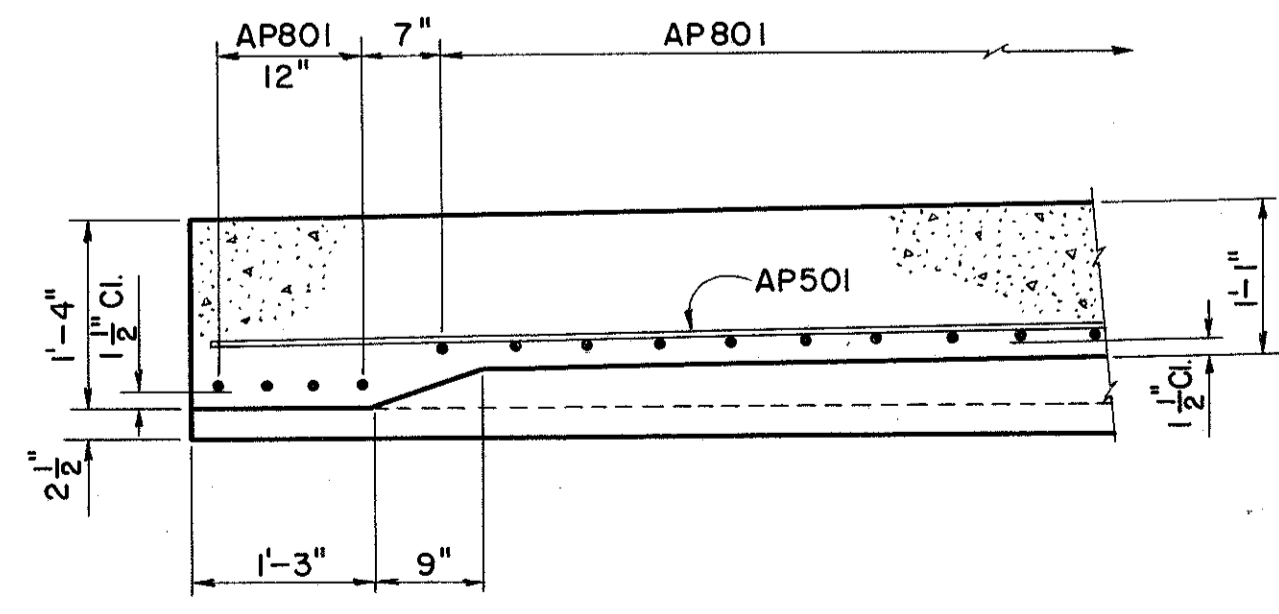


SECTION A-A

* Curb on the approach slab shall be transitioned in height and shape between the limits of the approach pavement and the safety curb.
Varies 6" to 10" *



SECTION B-B



SECTION C-C

CONCRETE shall be class C or class D.
 PREFORMED EXPANSION Joint Filler at the edges of approach slab shall be included with the approach slab for payment.
 CONSTRUCTION JOINT: Payment for the median, Constr. joints, including dowel bars, is included in the price per sq. yd. bid for the approach pavement.
 REINFORCING BAR LIST: See following sheet

| | | | | | |
|-------------------------------------------------------------------------------------------------------------------------|------------------|--------|------------------|------------------|---------|
| PREPARED BY CAPITOL ENGINEERING ASSOCIATES, DILLSBURG, PA. FOR | | | | | |
| STATE OF OHIO DEPARTMENT OF HIGHWAYS DIVISION OF DESIGN AND CONSTRUCTION BUREAU OF BRIDGES | | | | | |
| REAR APPROACH SLAB DETAILS BRIDGE NO. LAK-2-1862 RELOC. SR.2 UNDER RECONSTR US-20 LAKE COUNTY STA. 99+73.07 | | | | | |
| DESIGNED | DRAWN | TRACED | CHECKED | REVIEWED DATE | REVISED |
| | M.J.F. L.L.D. | FWB | L.L.D. M.J.F. | G.S.W. M.C.P. | |