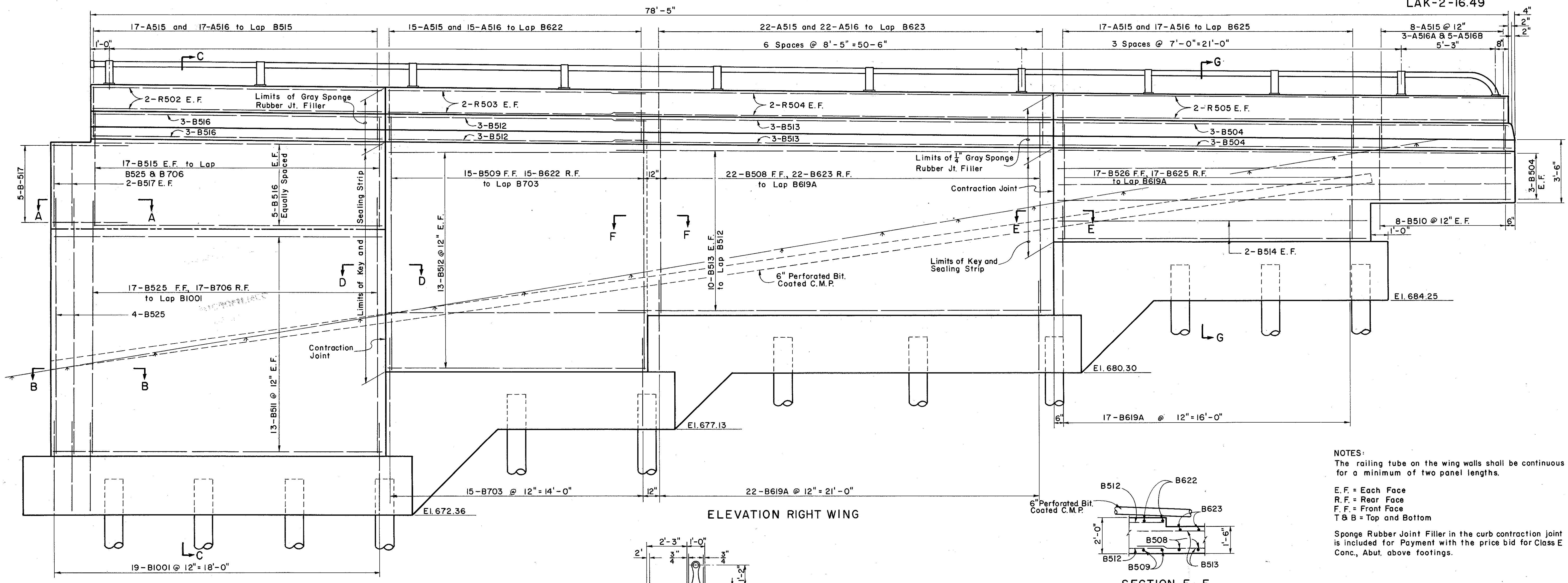


MICROFILMED
MAR 3 0 1984

FED. RD. DIVISION	STATE	PROJECT	283 313
2	OHIO		

LAKE COUNTY
LAK-2-16.49

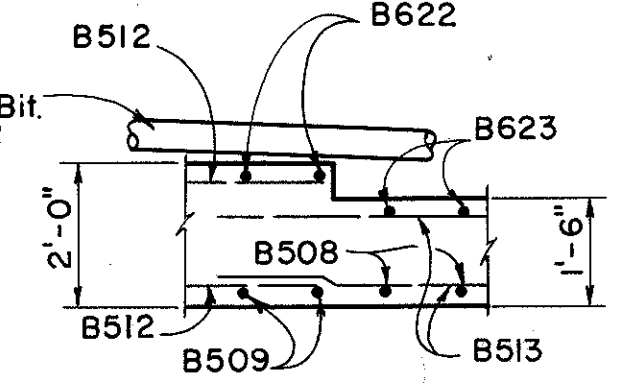


ELEVATION RIGHT WING

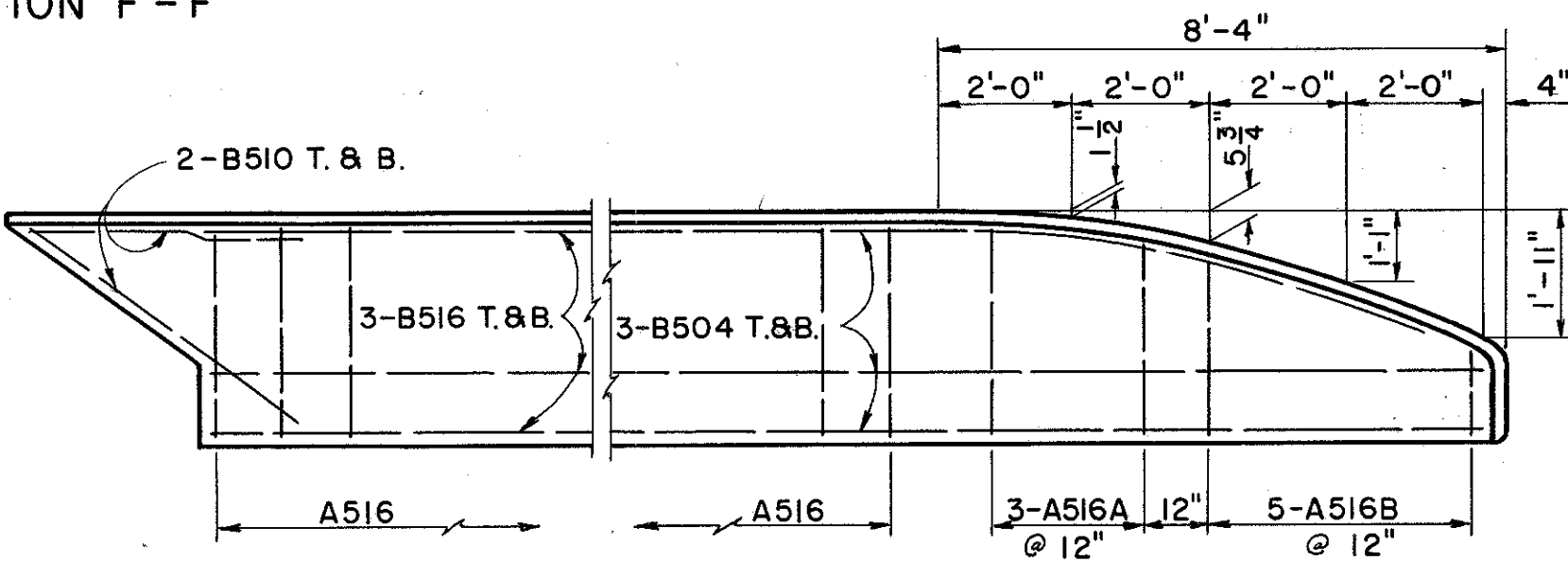
NOTES:
The railing tube on the wing walls shall be continuous for a minimum of two panel lengths.

E. F. = Each Face
R. F. = Rear Face
F. F. = Front Face
T & B = Top and Bottom

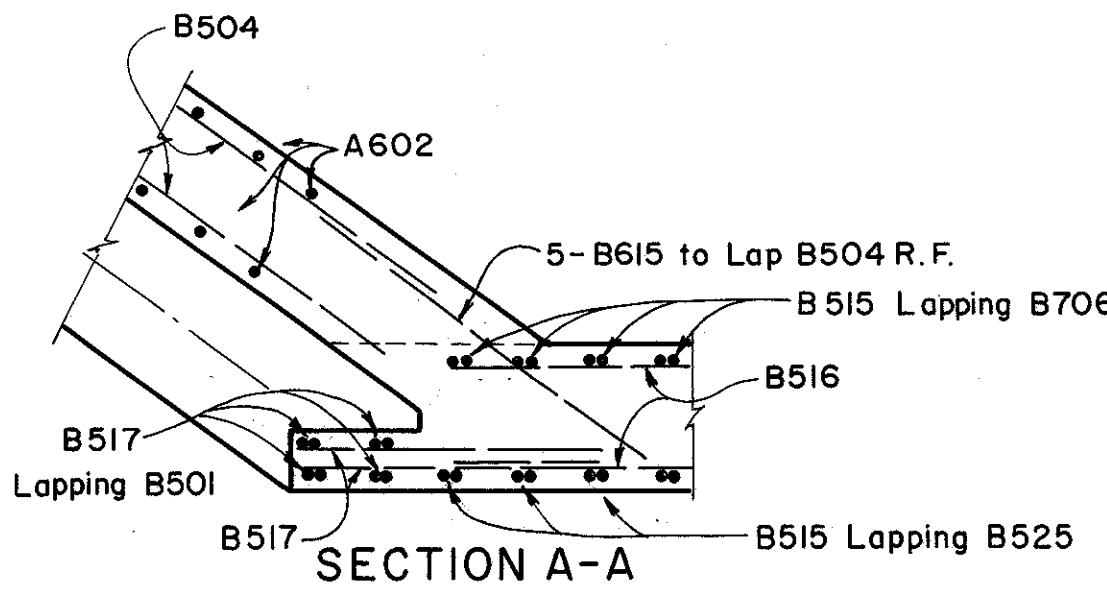
Sponge Rubber Joint Filler in the curb contraction joint is included for Payment with the price bid for Class E Conc. Abut. above footings.



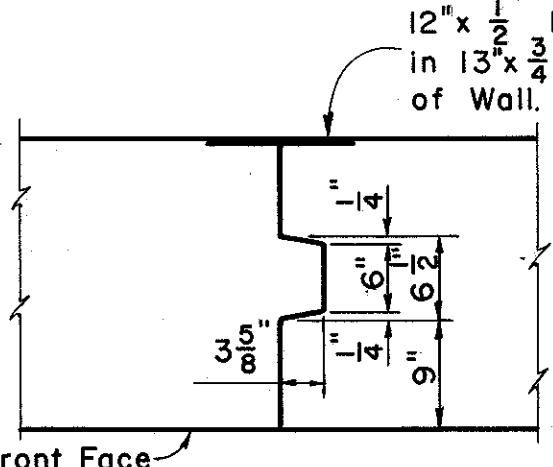
SECTION F-F



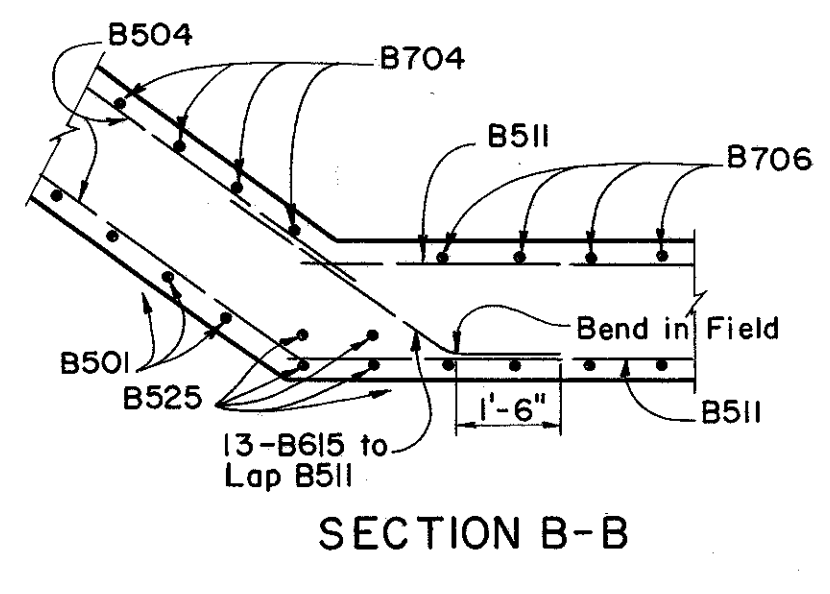
CURB PLAN



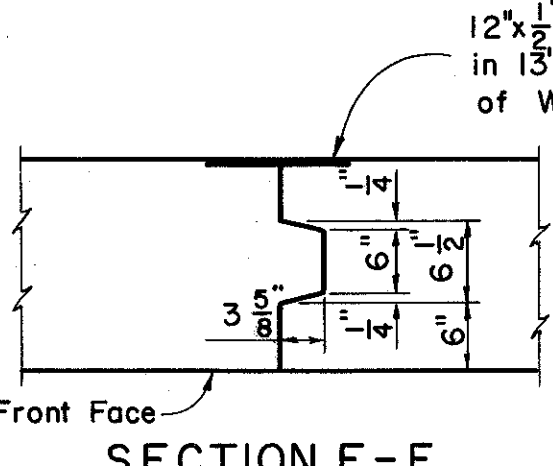
SECTION A-A



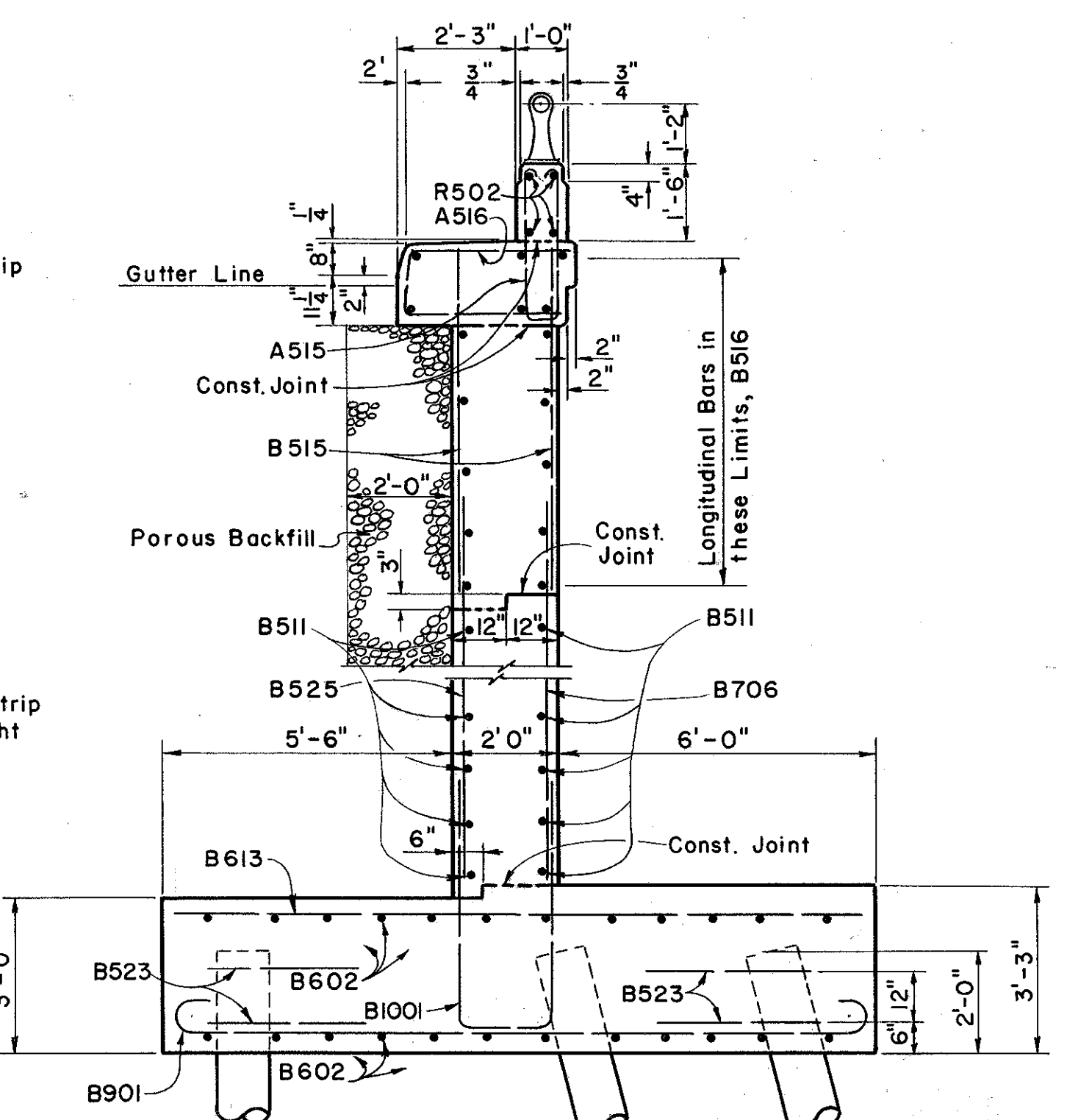
SECTION D-D



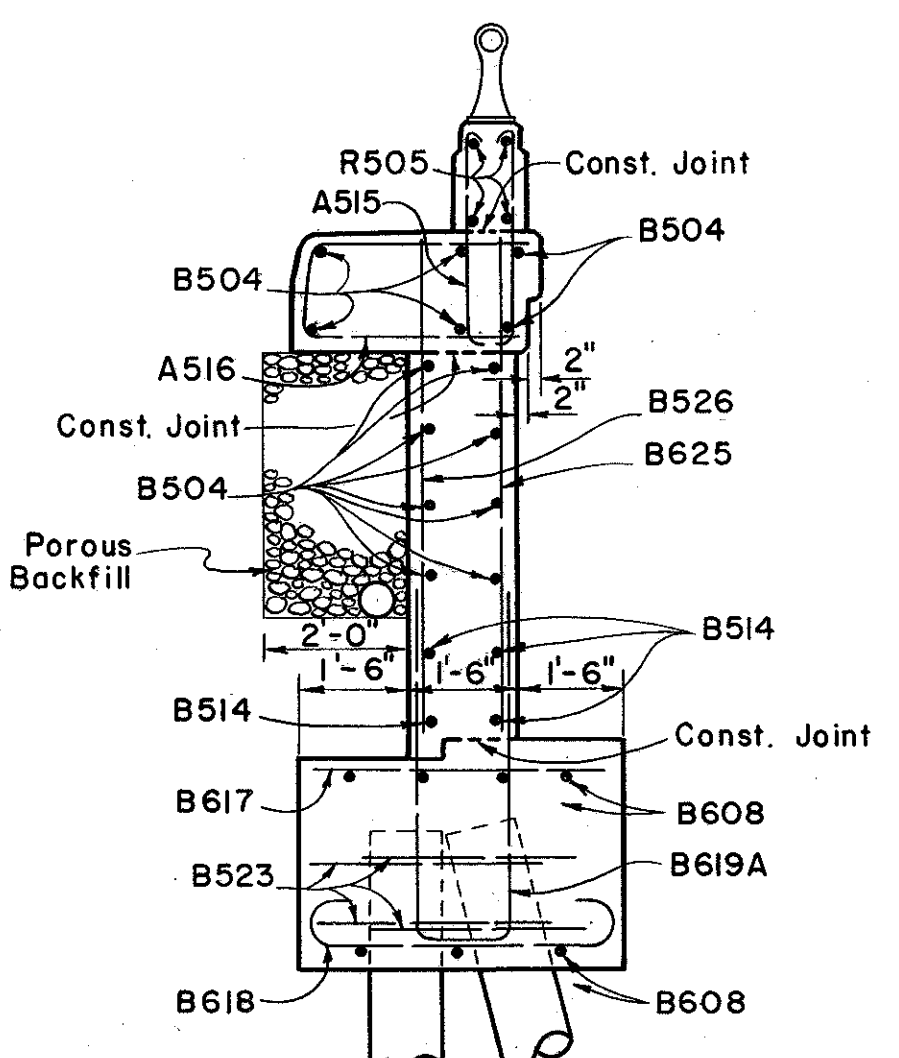
SECTION B-B



SECTION E-E



SECTION C-C



SECTION G-G

PREPARED BY CAPITOL ENGINEERING ASSOCIATES, DILLSBURG, PA. FOR STATE OF OHIO DEPARTMENT OF HIGHWAYS DIVISION OF DESIGN AND CONSTRUCTION BUREAU OF BRIDGES				
FORWARD ABUTMENT DETAILS BRIDGE NO. LAK-2-1862 RELOC. S.R. 2 UNDER RECONSTR. U.S. 20 LAKE COUNTY STA. 99 + 73.07				
DESIGNED	DRAWN	TRACED	CHECKED	REVIEWED DATE
M.J.F.	M.J.F.	FWB	LLD	G.S.W.
			M.J.F.	M.C.P.