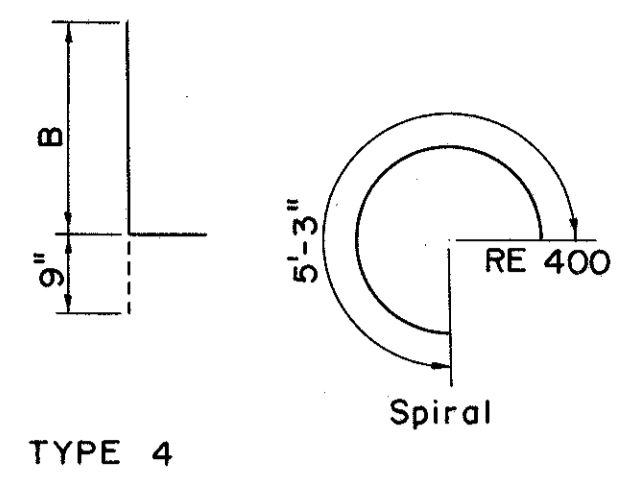
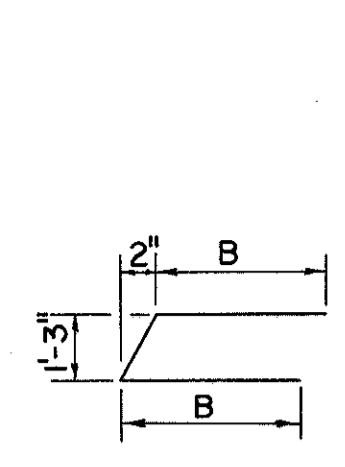


MICROFILMED
MAR 3 0 1984

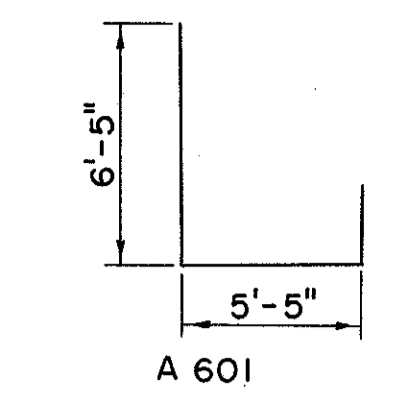
LAKE COUNTY
LAK - 2 - 16.49



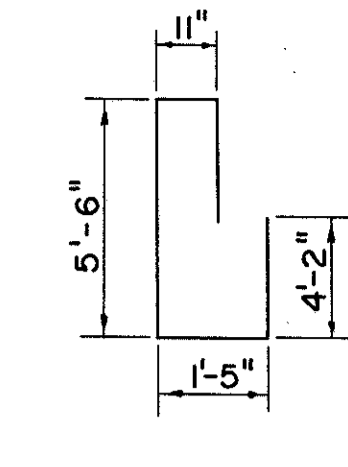
TYPE 4



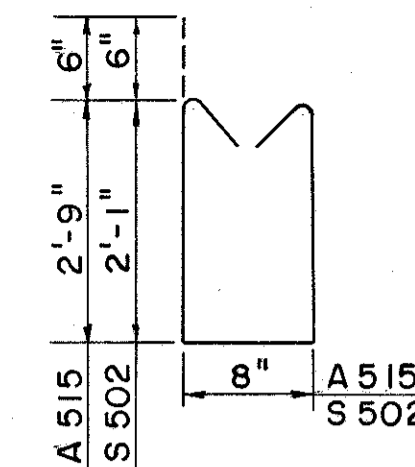
TYPE 3



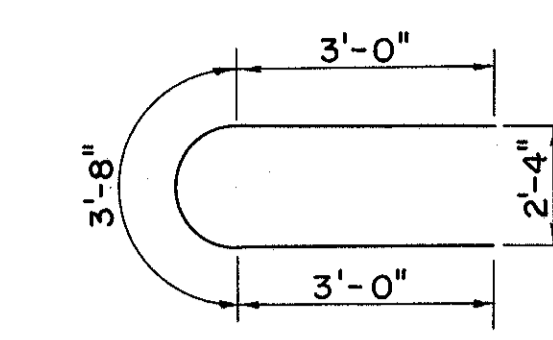
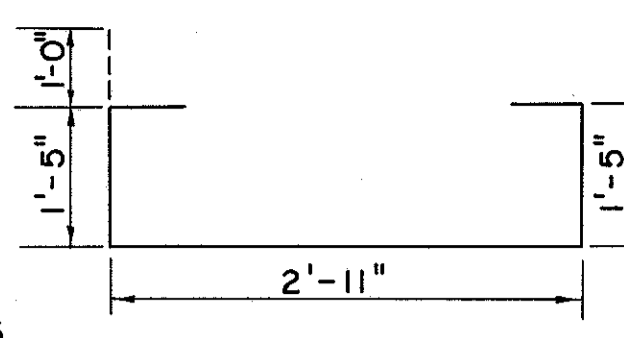
A 601



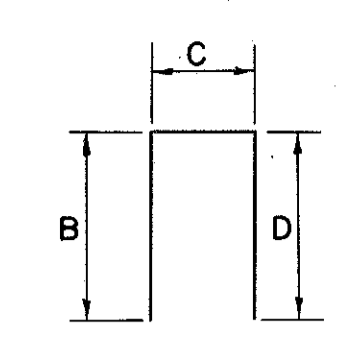
A 602



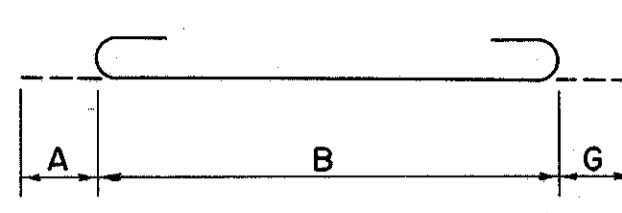
S 503



P 904



TYPE 1



TYPE 2

NOTES

Bar Size is indicated in the bar mark. The first digit where three digits are used, and the first two digits where four digits are used, indicate the size of the bar. For example A 700 is a No. 7 size bar and A 1014 is a No. 10 size bar.

All dimensions are out to out of the bar.

Type "S" is straight bar.

The "length" shown in steel list for the spiral bars is the distance from the top of the footing to the bottom of cap.

The "number of turns" shown in the steel list for the spiral bars is the "length" divided by the pitch, plus three (3) turns (total number of closed coils) expressed as the nearest whole number.

Spiral reinforcing bars shall not have deformations but shall in other respects conform to Item S-4.

1/2 closed coils shall be provided at the ends of each spiral unit.

Four steel channel, tee or angle spacers, weight approximately 0.68 pounds per linear foot of spacer, shall be provided for each spiral unit. They shall be equally spaced along the periphery of the coil. The number of pounds of these spacers, based on 0.68 pounds per linear foot will be paid for as reinforcing steel and is included in the tabulated quantity of spiral bars.

REINFORCING STEEL LIST

PIERS										ABUTMENTS										SUPERSTRUCTURE																	
MARK	REAR PIER	PIER NO. 2	PIER NO. 3	FWD. PIER	TOTAL	LENGTH	WEIGHT	TYPE	A	B	C	D	G	MARK	REQ'D REAR	REQ'D FWD.	TOTAL	LENGTH	WEIGHT	TYPE	B	C	D	VARIABLES NO. OF EACH	MARK	TOTAL	LENGTH	WEIGHT	TYPE	B	C	D	VARIABLES NO. OF EACH				
P1101	24	24	24	24	96	6'-10"	3,484	I		10"	6'-4"	0		A 801	14	14	28	24'-9"	1,850	S					S 701	366	36'-2"	27,058	S								
P1102	-	24	-	-	24	16'-6"	2,104	S						A 601	32	32	64	14'-2"	1,362	-					S 701A	60	4'-9 1/4" to 35'-7"	2,475	S				1'-0 3/4"	2			
P1102A	24	-	24	-	48	17'-6"	4,463	S						A 602	41	41	82	14'-6"	1,786	-					S 701B	10	3'-6"	7,154	S								
P1102B	-	-	-	24	24	18'-9"	2,391	S						A 603	17	17	34	11'-10"	604	S					S 601	366	36'-2"	19,883	S								
P901	24	24	24	24	96	6'-0"	1,958	I		8"	5'-7"	0		A 604	3	3	6	9'-6"	86	S					S 601A	60	4'-9 1/4" to 35'-7"	1,819	S				1'-0 3/4"	2			
P902	-	24	-	-	24	16'-6"	1,346	S						A 605	36	36	72	7'-1"	766	I	2'-1"	3'-2"	2'-1"		S 601B	10	3'-6"	53	S								
P902A	24	-	24	-	48	17'-6"	2,856	S						A 501	32	32	64	8'-8"	579	I	1'-9"	5'-5"	1'-9"		S 602	671	30'-0"	30,235	S								
P902B	-	-	-	24	24	18'-9"	1,530	S						A 502	32	32	64	7'-2"	479	4	6'-5"				S 603	96	30'-4"	4,374	S								
P903	8	8	8	8	32	10'-3"	1,115	I		6'-3"	4'-3"	0		A 503	32	32	64	7'-2"	479	I	2'-0"	3'-5"	2'-0"		S 501	432	3'-10"	1,726	I	7"	2'-11"	7"					
P904	4	4	4	4	16	9'-8"	526	-						A 504	36	36	72	23'-0"	1,727	S					S 502	430	5'-7"	2,502	-								
P905	8	8	8	8	32	38'-0"	4,134	S						A 505	40	40	80	9'-9"	813	4	9'-0"				S 503	432	7'-3"	3,267	-								
P906	6	6	6	6	24	7'-0"	571	S						A 506	8	8	16	8'-11"	149	S																	
P907	3	3	3	3	12	25'-0"	1,020	S						A 506A	8	8	16	9'-5"	157	S																	
P701	32	32	32	32	128	10'-4"	2,703	2	10"	8'-8"			10"	A 507	12	12	24	4'-0"	100	S																	
P601	40	40	40	40	160	7'-6"	1,802	2	8"	6'-2"			8"	A 508	2	2	4	6'-6"	27	S																	
P501	42	42	42	42	168	7'-5"	1,300	I						A 508A	2	2	4	7'-7"	32	S																	
P502	4	4	4	4	16	19'-10"	331	S						A 509	8	8	16	13'-3"	221	S																	
														A 509A	8	8	16	14'-5"	241	S																	
														A 510	2	2	4	12'-0"	50	S																	
														A 510A	2	2	4	16'-0"	67	S																	
														A 511	30	30	60	4'-6"	282	S																	
														A 512	12	12	24	3'-8" to 4'-4"	100	S				4"	4												
														A 513	20	20	40	3'-6"	146	S																	
														A 514	10	10	20	3'-0"	62	S																	
														A 515	29	29	58	6'-11"	418																		
														A 516	12	12	24	7'-2"	179	3	3'-1"																
														A 516A	8	8	16	6'-0" to 7'-0"	108	3	2'-6" to 3'-0"				2"	2											
														A 516B	10	10	20	3'-4" to 5'-10"	95	3	1'-2" to 2'-5"				3 3/4"	2											
														A 517	28	28	56	5'-9"	336	1	2'-6"	1'-0"	2'-6"														
														A 518	14	14	28	5'-2"	151	2	4'-0"				A & G 7"												

SPIRAL BARS

MARK	REAR PIER	PIER NO. 2	PIER NO. 3	FWD. PIER	TOTAL	LENGTH	WEIGHT	PITCH	NO. TURNS	CORE DIA.
P401	-	4	-	-	4	13'-3 3/8"	924	4 1/2"	35	32"
P401A	4	-	4	-	8	14'-6"	2,056	4 1/2"	39	32"
P401B	-	-	-	4	4	15'-9 1/4"	1,108	4 1/2"	42	32"

RAILING

MARK	TOTAL	LENGTH	WEIGHT	TYPE
R501	152	14'-0"		S
R501A	16	11'-5"		S
R501B	16	6'-10"		S
R502	8	2'-11"		S
R502A	8	14'-1"		S

REPLACEMENT BARS

MARK	NO.	LENGTH	TYPE
RE 1100	1	7'-7"	S
RE 900	1	6'-10"	S
RE 800	1	6'-6"	S
RE 700	1	6'-3"	S
RE 600	1	5'-11"	S
RE 500	1	5'-7"	S
RE 400	1	5'-3"	Bent

PREPARED BY
CAPITOL ENGINEERING ASSOCIATES, DILLSBURG, PA.
FOR

STATE OF OHIO
DEPARTMENT OF HIGHWAYS
DIVISION OF DESIGN AND CONSTRUCTION
BUREAU OF BRIDGES

REINFORCING BAR LIST
BRIDGE NO. LAK - 2 - 1748
RELOC. S.R. 2 UNDER RECONSTR. S.R. 535
LAKE COUNTY
STA. 822 + 70.56

DESIGNED	DRAWN	TRACED	CHECKED	REVIEWED DATE	REVISED
M.J.F.	M.J.F.	F.W.B.	L.L.D.	G.S.W.	
L.L.D.			M.J.F.	M.C.P.	