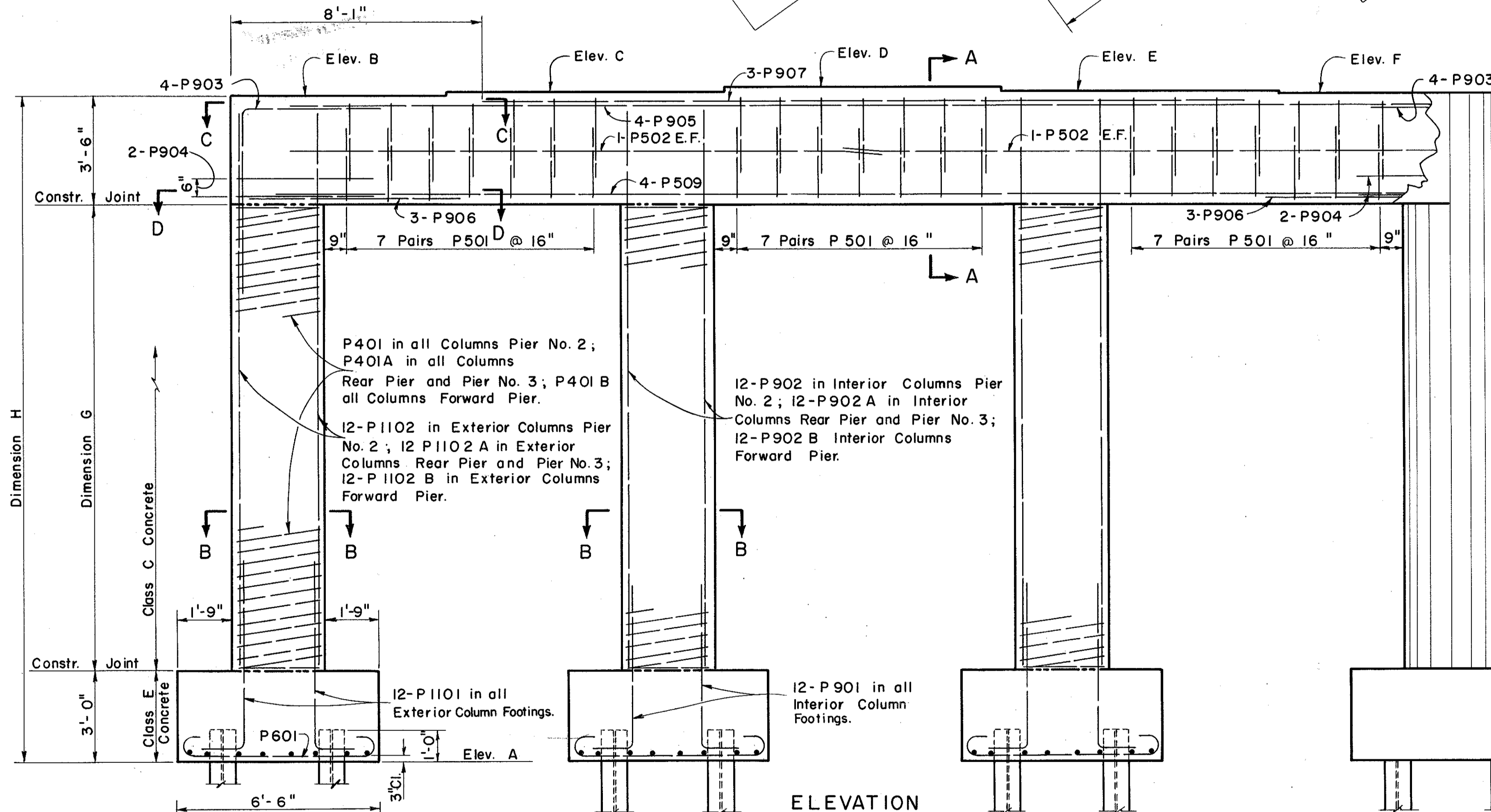
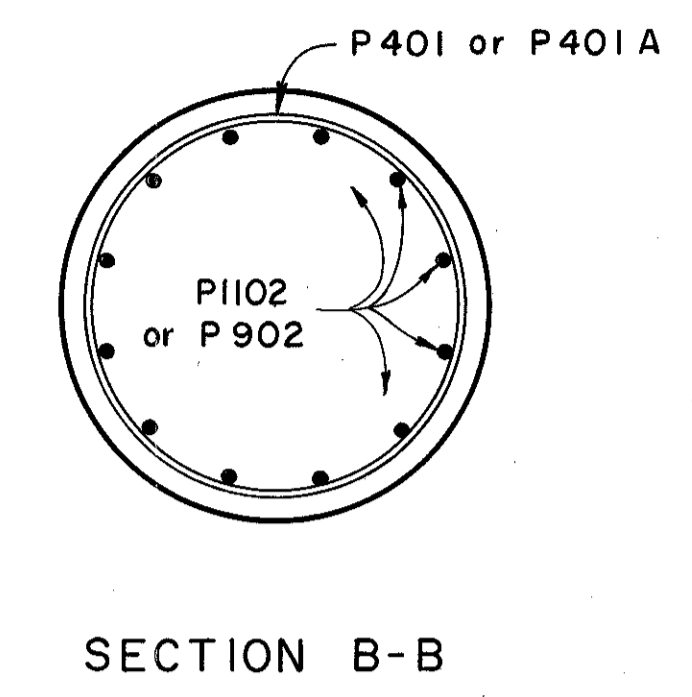
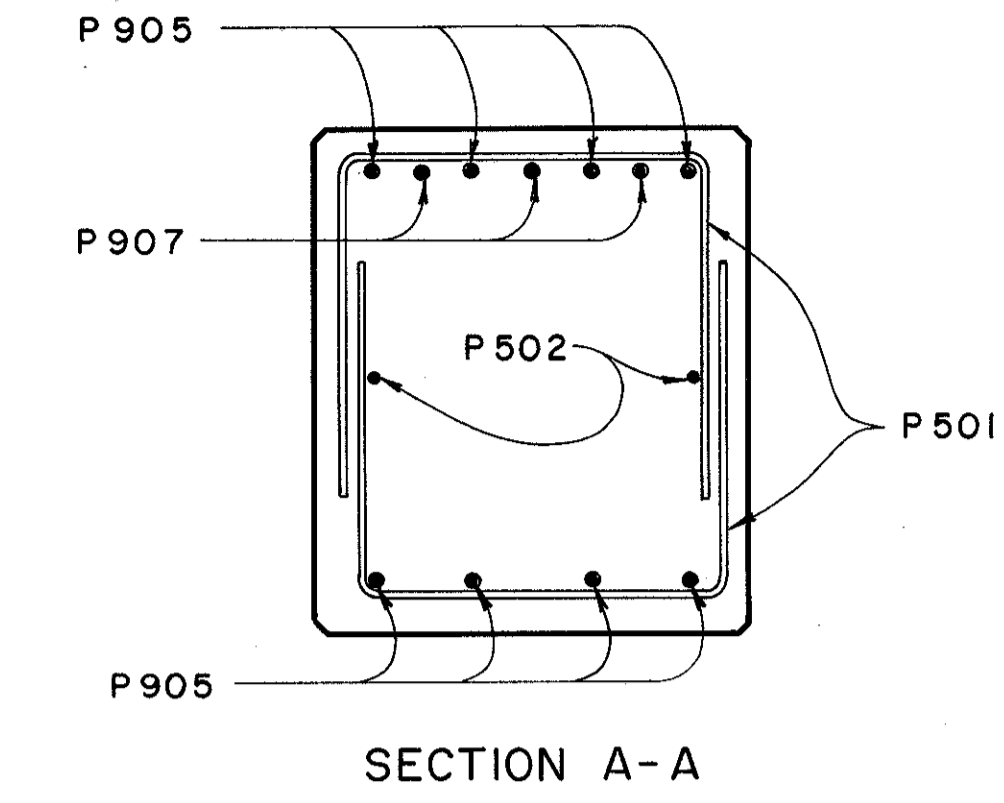
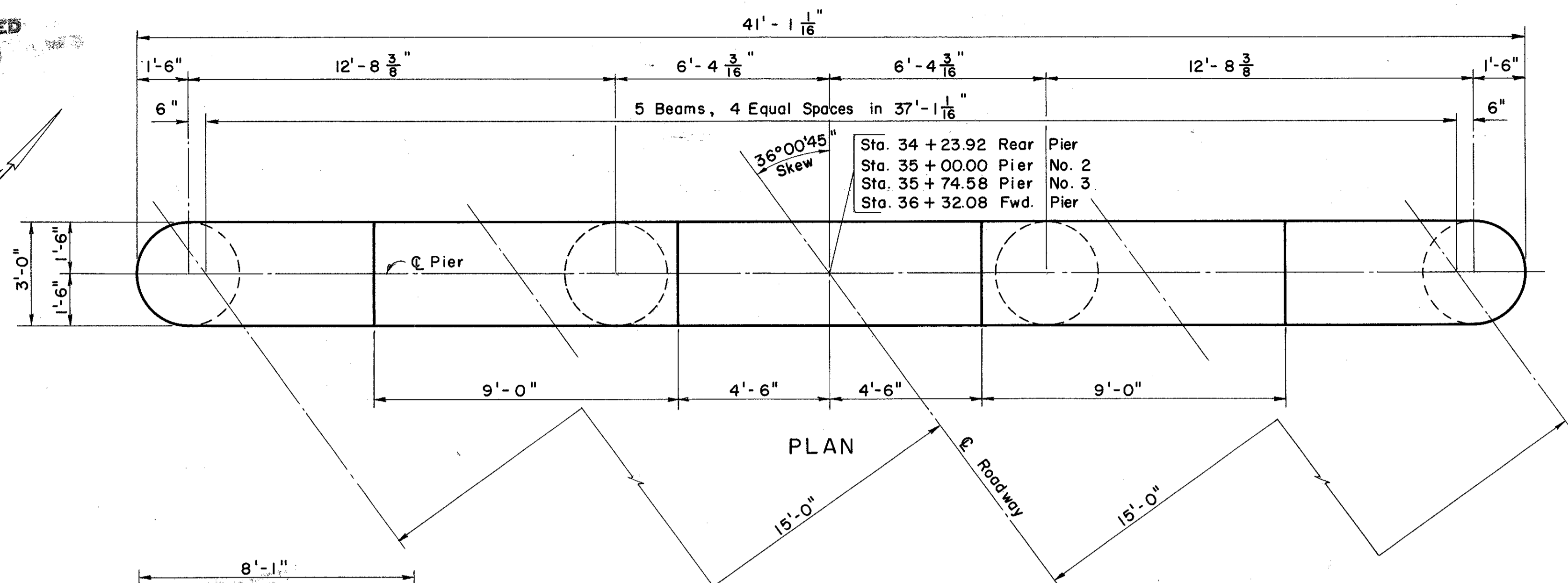


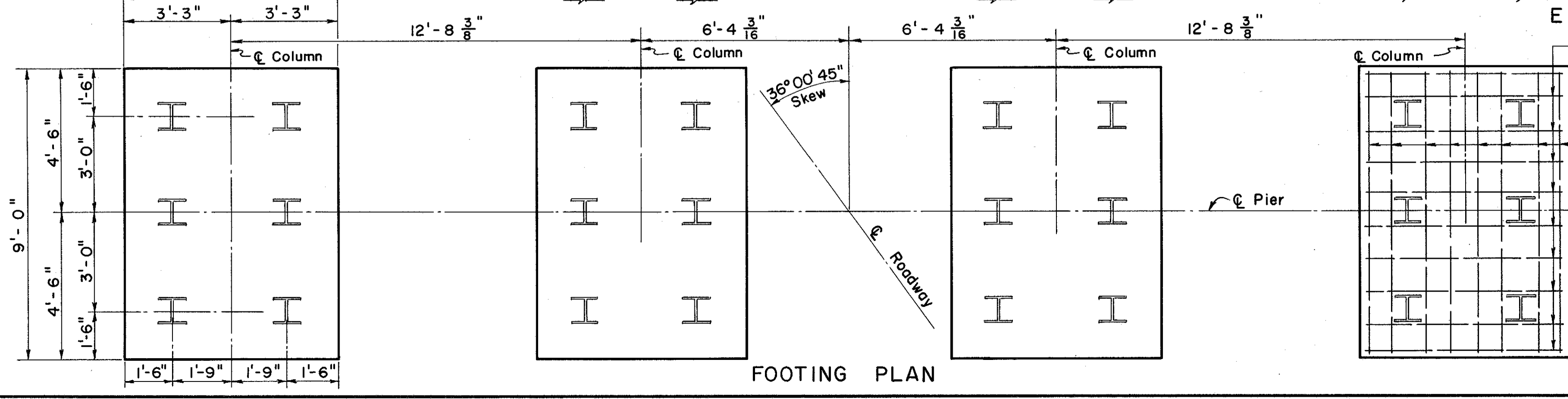
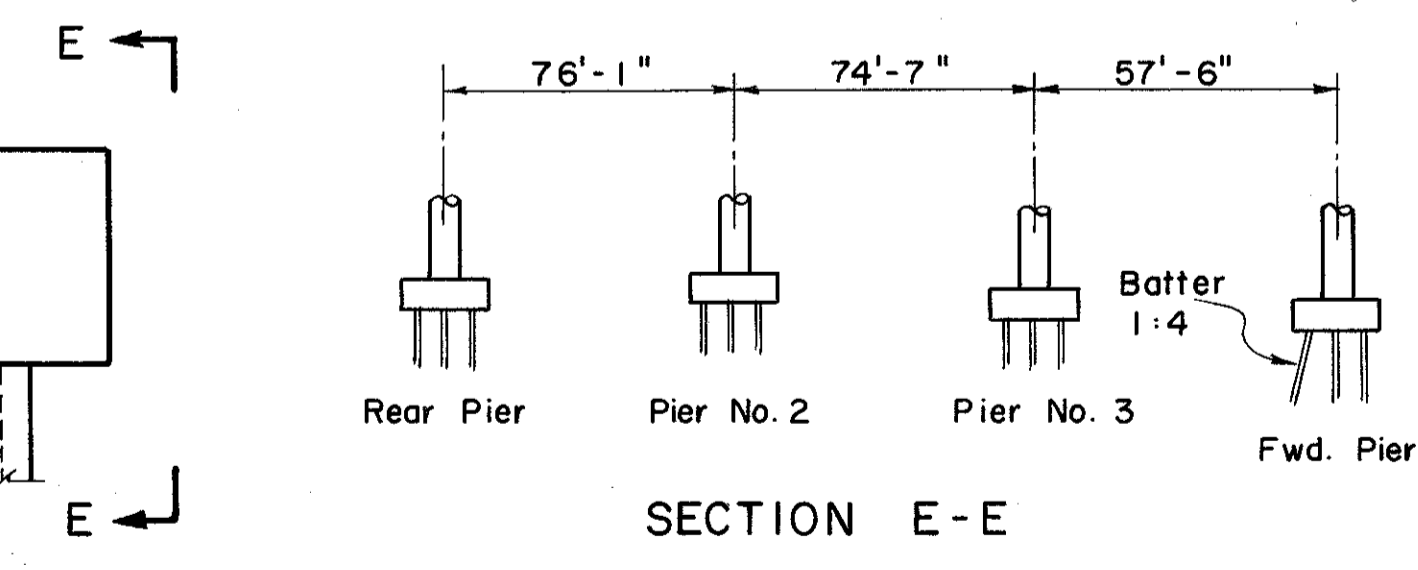
MICROFILMED  
MAR 3 0 1984

LAKE COUNTY  
LAK-2-16.49



PIER	ELEVATIONS						DIMENSIONS	
	A	B	C	D	E	F	G	H
Rear Pier	623.25	644.25	644.39	644.53	644.44	644.35	14'-6"	21'-0"
Pier No. 2	623.75	643.56	643.70	643.85	643.76	643.67	13'-3 3/4"	19'-9 3/4"
Pier No. 3	622.50	643.50	643.65	643.79	643.70	643.61	14'-6"	21'-0"
Forward Pier	621.00	643.27	643.41	643.56	643.47	643.38	15'-9 1/4"	22'-3 1/4"

E.F. = Each Face  
 BRIDGE SEAT REINFORCING: Special care shall be taken in placing reinforcing steel in the vicinity of the bridge seats so as to avoid interference with drilling of anchor bar holes.  
 ALL REINFORCING STEEL shall have a minimum of cover of 2" unless otherwise shown.  
 ALL PILES are 10 BP42.  
 All Piles are vertical except in forward pier. Batter rear row 1:4 (See Section E-E)  
 For additional notes see General Plan.



NOTE:  
Pile Spacing and Reinforcement is the same for all Footings.

PREPARED BY  
CAPITOL ENGINEERING ASSOCIATES, DILLSBURG, PA. FOR

STATE OF OHIO  
DEPARTMENT OF HIGHWAYS  
DIVISION OF DESIGN AND CONSTRUCTION  
BUREAU OF BRIDGES

PIERS  
BRIDGE NO. LAK-2-1748  
RELOC. S.R. 2 UNDER RECONSTR. S.R. 535  
LAKE COUNTY  
STA. 822+70.56

DESIGNED M.C.P. L.L.D.	DRAWN M.J.F.	TRACED FWB	CHECKED L.L.D. M.J.F.	REVIEWED DATE G.S.W. M.C.P.	REVISED
------------------------------	-----------------	---------------	-----------------------------	-----------------------------------	---------