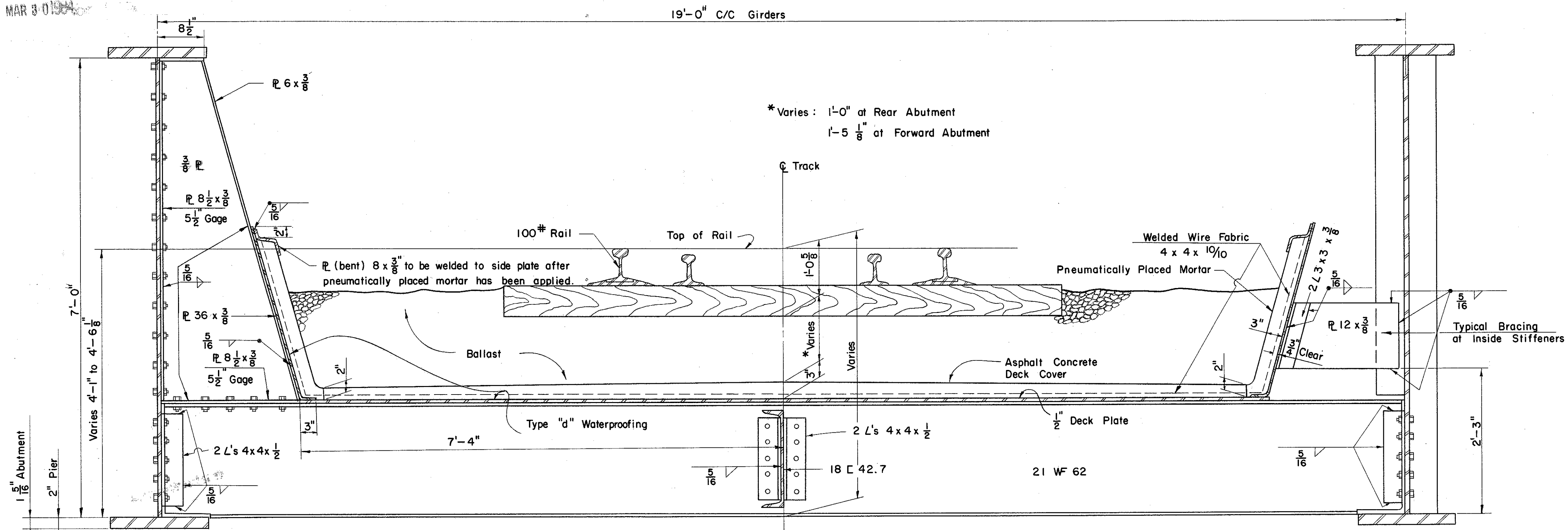


MICROFILMED  
MAR 3 0 1964

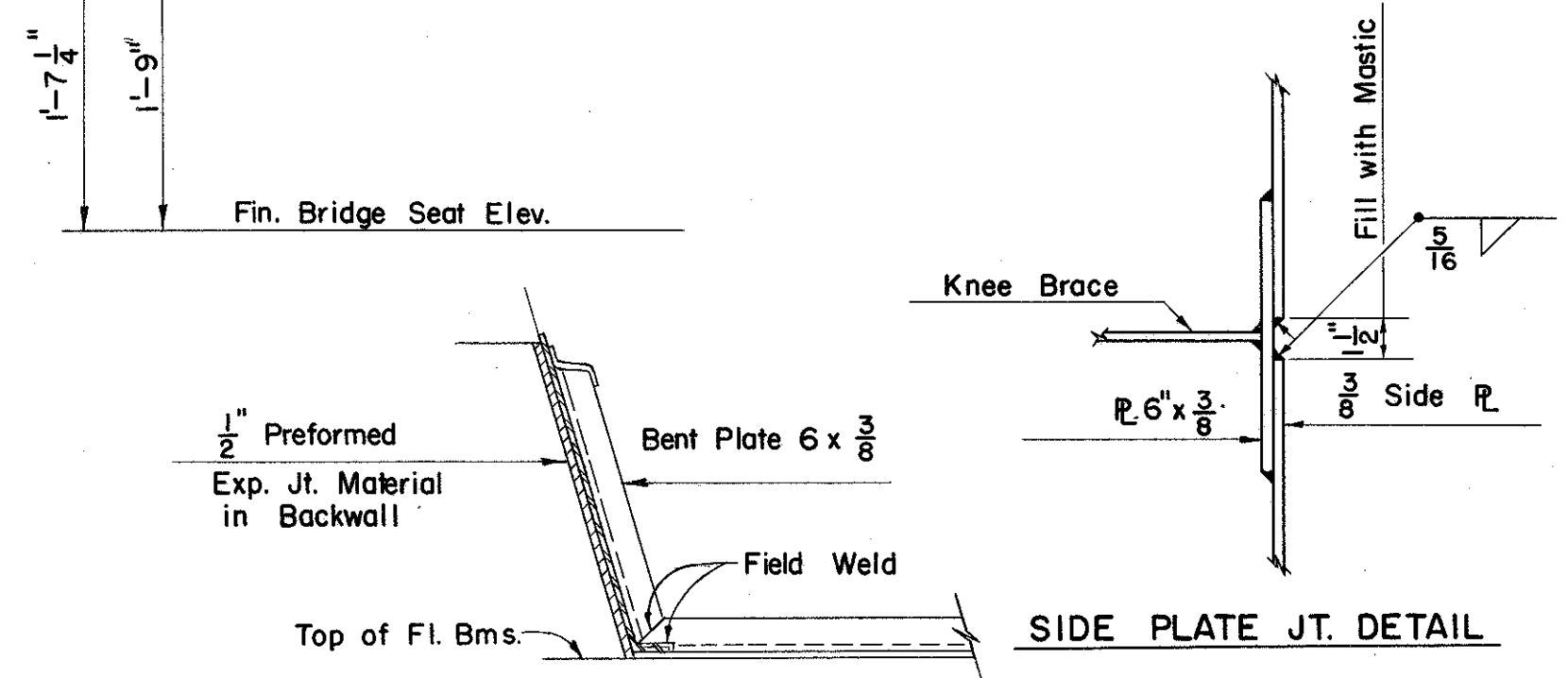
FED. RD. DIVISION	STATE	PROJECT	
2	OHIO		

251  
313

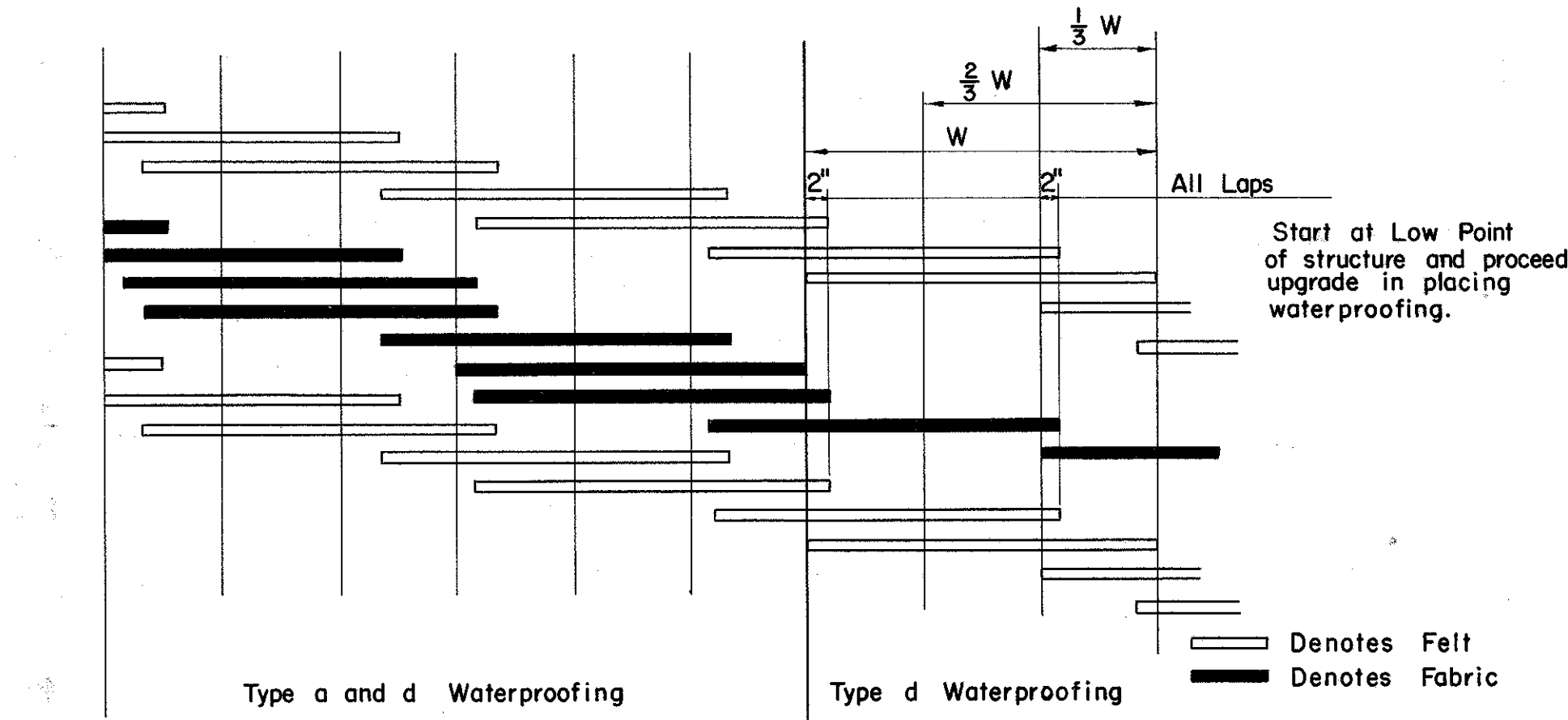
LAKE COUNTY  
LAK -2-16.49



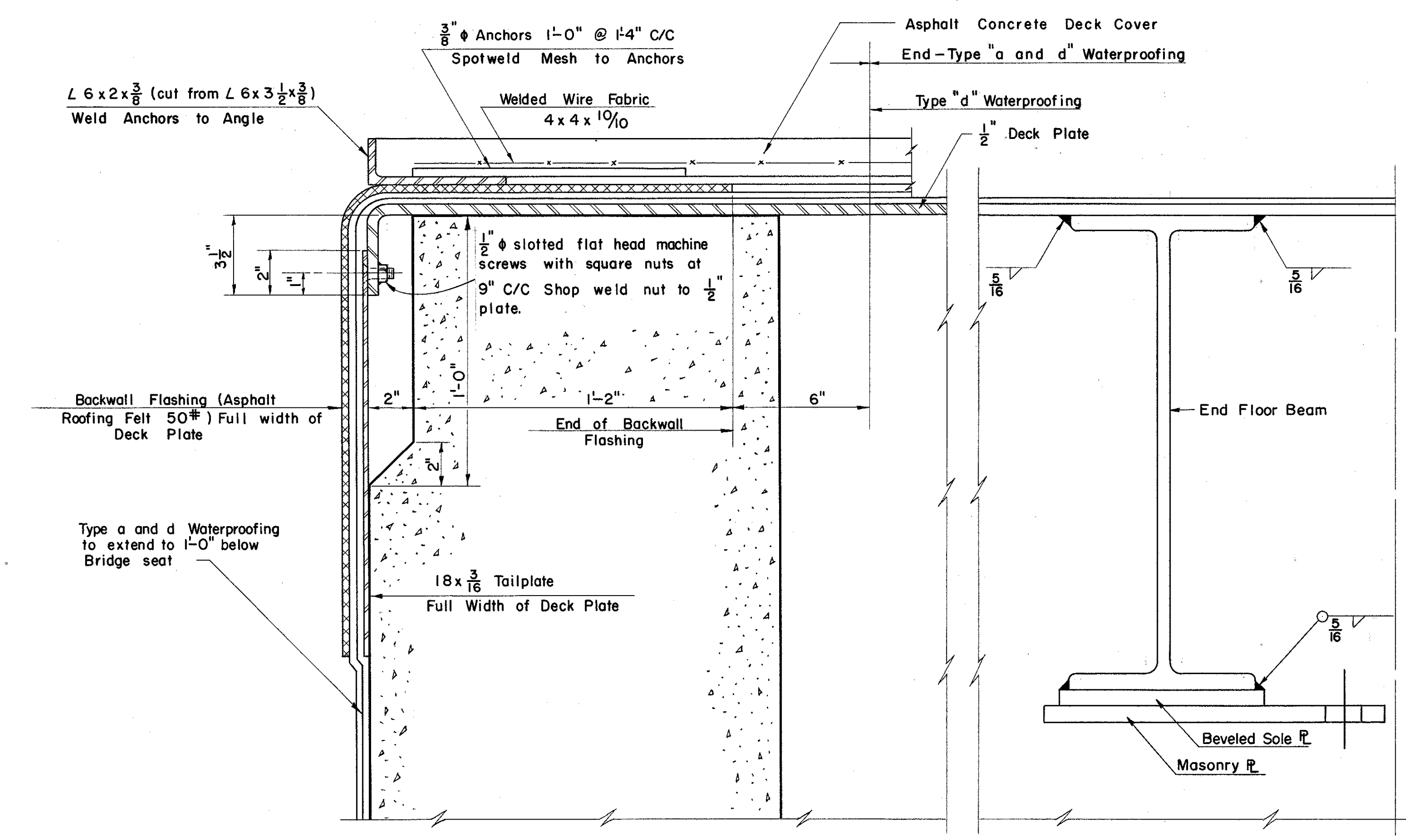
TYPICAL CROSS SECTION



END VIEW OF FLOOR PLATE & SIDE PLATE



SCHEMATIC DETAIL OF WATERPROOFING



WATERPROOFING DETAILS AT BACKWALL

PREPARED BY CAPITOL ENGINEERING ASSOCIATES, DILLSBURG, PA. FOR					
STATE OF OHIO DEPARTMENT OF HIGHWAYS DIVISION OF DESIGN AND CONSTRUCTION BUREAU OF BRIDGES					
DETAILS OF SUPERSTRUCTURE AND WATERPROOFING BRIDGE NO. LAK-2-1721 RELOC. S.R. 2 UNDER F.P. & E. R.R. LAKE COUNTY STA. 808 + 46.23					
DESIGNED B.O.L.	DRAWN R.J.A. K.D.L.	TRACED	CHECKED L.L.D.	REVISED DATE	REVISED