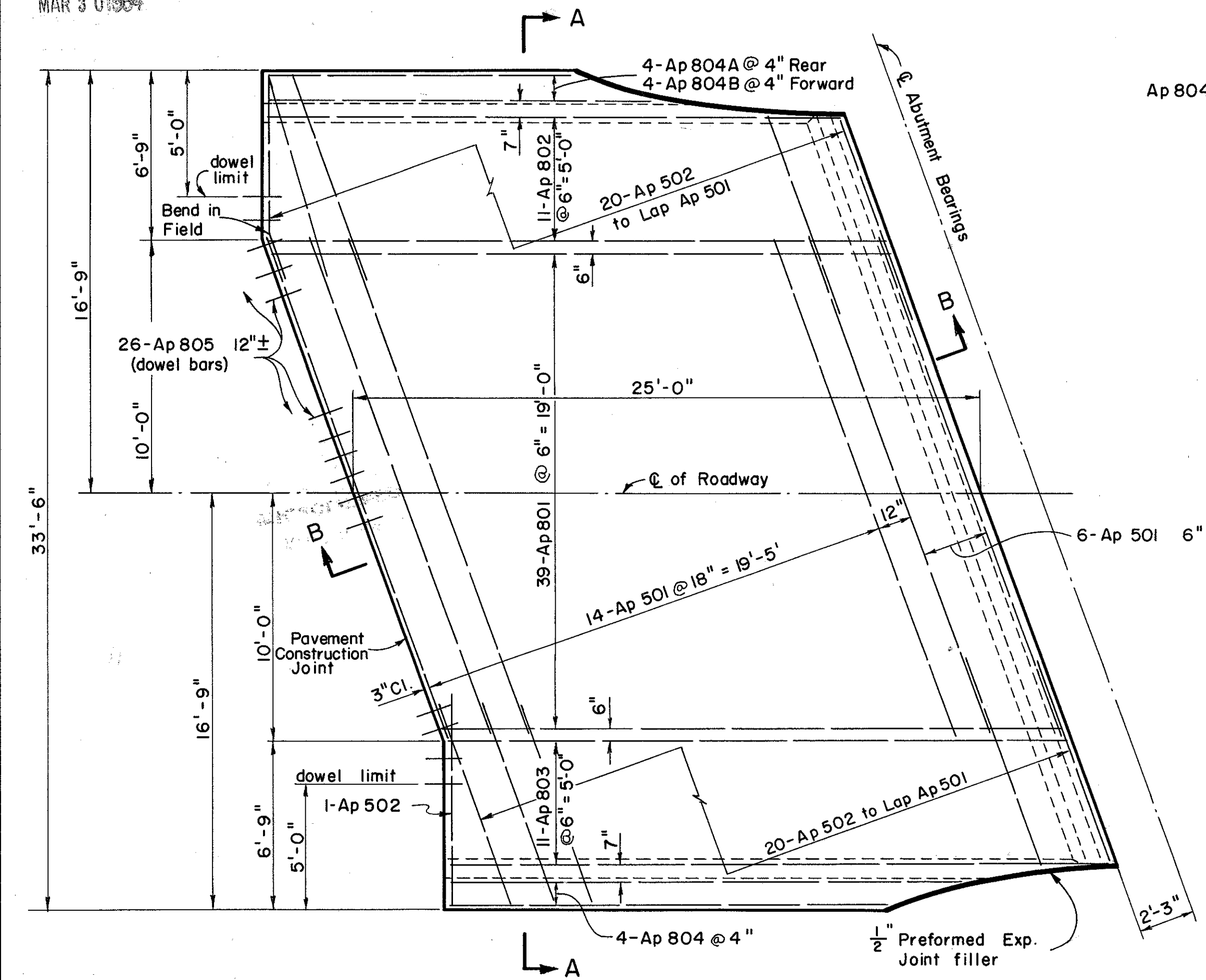


MICROFILMED
MAR 3 0 1984

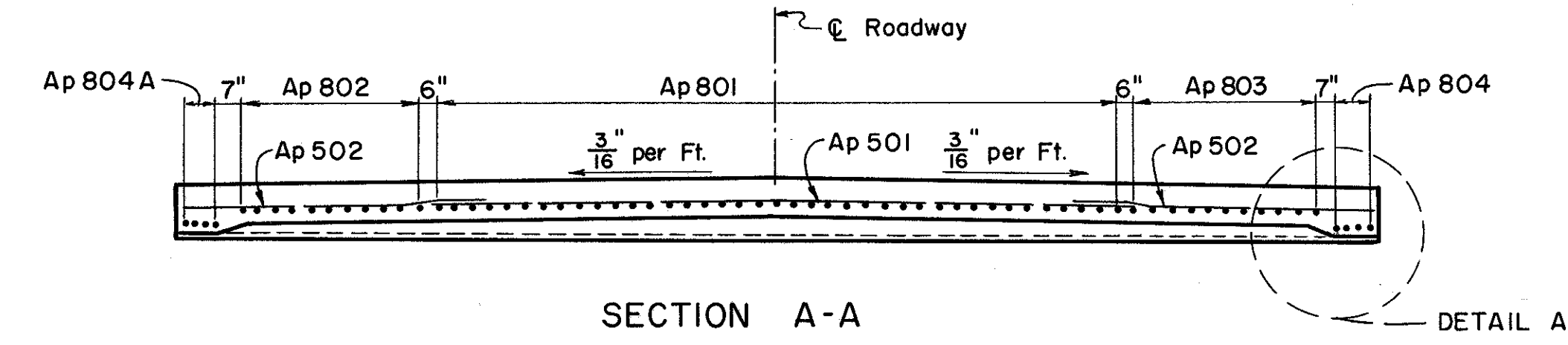
| | | |
|-------------------|-------|---------|
| FED. RD. DIVISION | STATE | PROJECT |
| 2 | OHIO | |

243
313

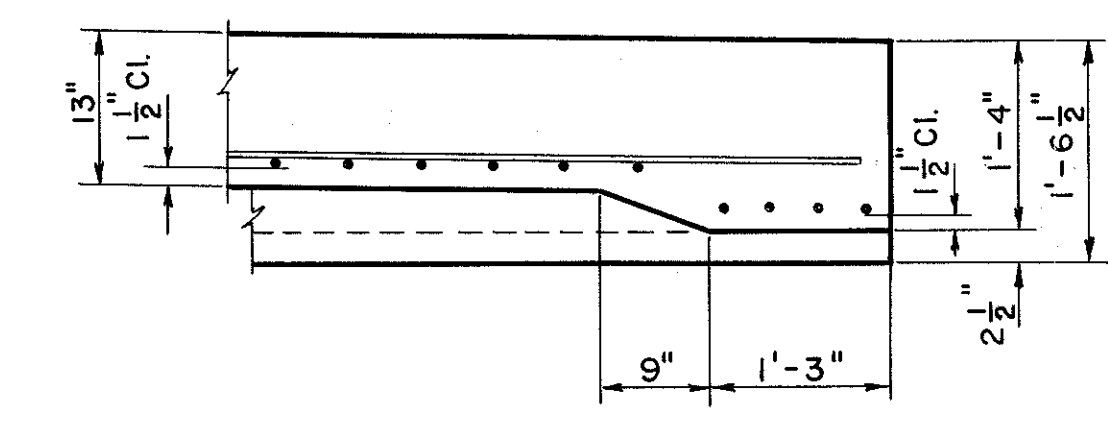
LAKE COUNTY
LAK-2-1649



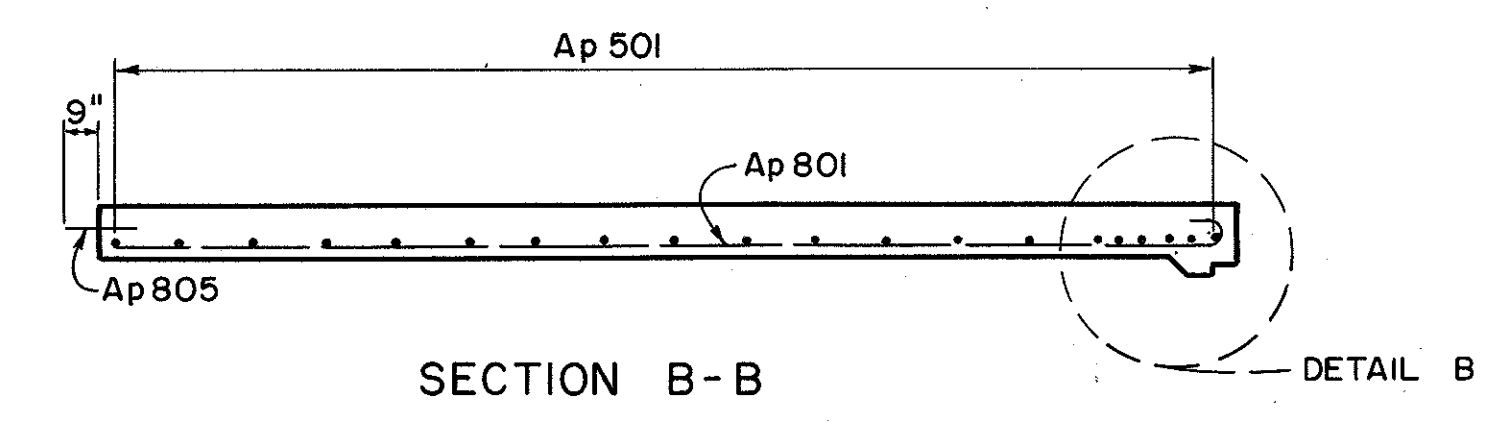
PLAN OF REAR APPROACH SLAB
(FORWARD APPROACH SLAB SYMMETRICAL
ABOUT CL OF ABUTMENT BEARINGS)



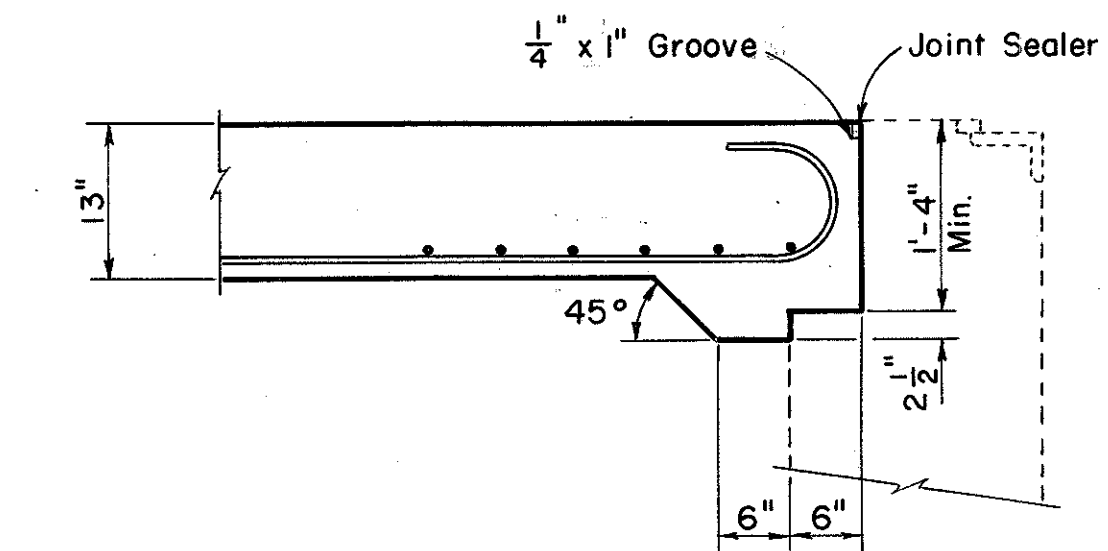
SECTION A-A



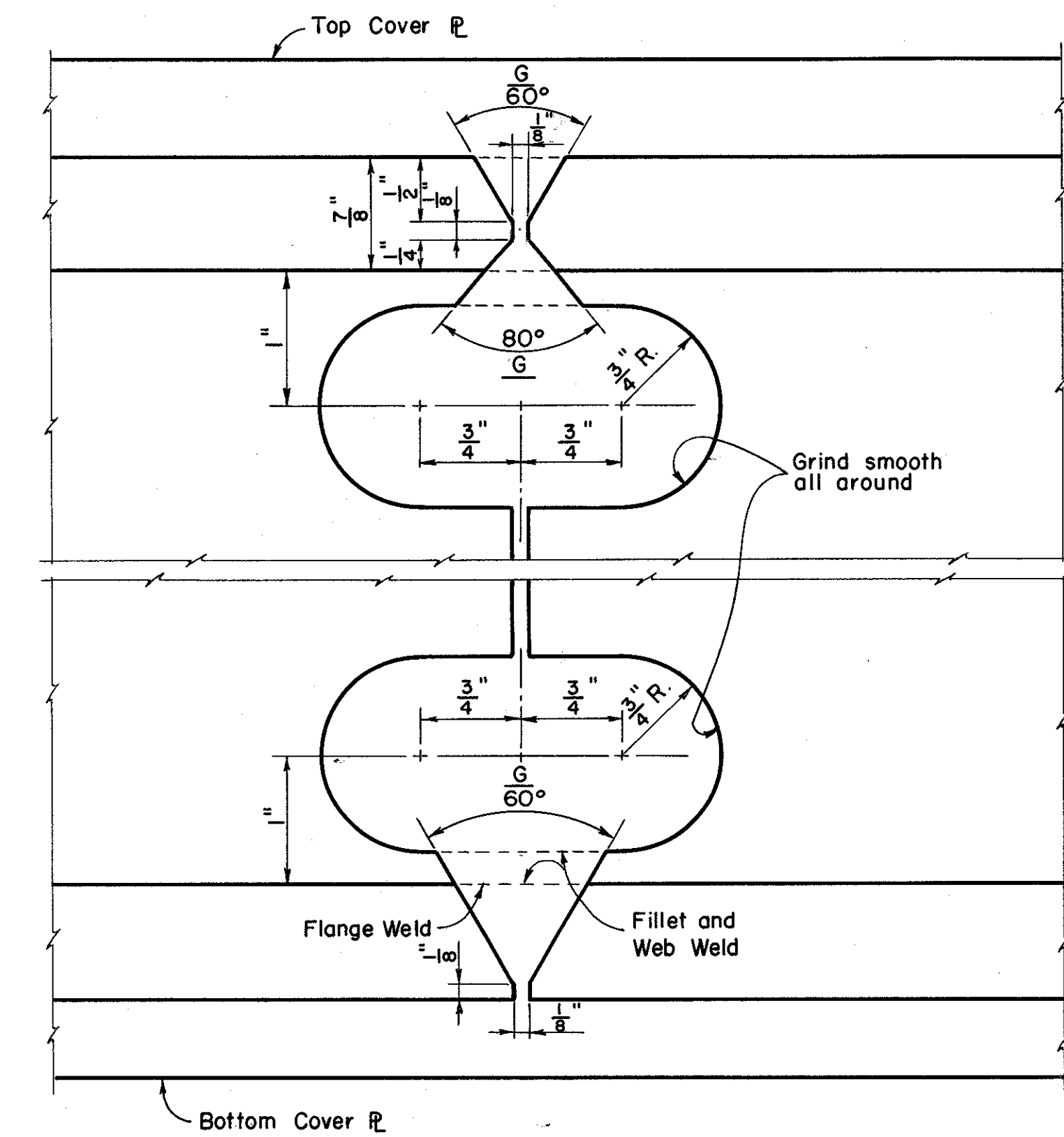
DETAIL A



SECTION B-B



DETAIL B



BEAM SPLICE WELDING PROCEDURE

NOTES:

- CONCRETE shall be Class C or Class D.
- REINFORCING STEEL and preformed expansion joint filler are included in reinforced concrete approach slab Item I-7 and are not paid for separately.
- CONSTRUCTION JOINT: Payment for the construction joints, including dowel bars, is included in the price per Sq. Yd. bid for the approach pavement.
- CONTINUOUS BEAM SPLICES: If beams having depths differing by more than 1/8" are to be spliced by butt welding, the depth of the smaller depth beam shall be increased by splitting the web longitudinally at a distance of 1-1/2" below the bottom of the top flange and for a distance sufficient to allow the flange to be bent up at a slope of not more than 3/8" per foot, after which the split in the web shall be completely welded with full depth penetration and ground flush. A 3/8" hole shall be drilled thru the web at the end of the split which is away from the splice prior to bending up the flange. The edges of the split shall be double bevelled to provide a weld bevel of 60°. The weld of the split shall be radiographed.

| REINFORCING BAR LIST | | | | | | | | | |
|----------------------|------------|-----------|-------|-----------------------|------|-------|----------------------|---|--------------------|
| MARK | REQ'D REAR | REQ'D FWD | TOTAL | LENGTH | TYPE | A | B | G | VARIES NO. OF EACH |
| Ap801 | 39 | 39 | 78 | 25'-9" | 2 | 1'-1" | 24'-8" | 0 | |
| Ap802 | 11 | 11 | 22 | 25'-9" to 23'-10 1/2" | 2 | 1'-1" | 24'-8" to 22'-9 1/2" | 0 | 2 1/4" 2 |
| Ap803 | 11 | 11 | 22 | 27'-7 1/2" to 25'-9" | 2 | 1'-1" | 26'-6 1/2" to 24'-8" | 0 | 2 1/4" 2 |
| Ap804 | 4 | 4 | 8 | 20'-3 1/2" to 17'-2" | S | | | | 1'-0 1/2" 2 |
| Ap804A | 4 | - | 4 | 15'-9" to 12'-3" | S | | | | 1'-2" 1 |
| Ap804B | - | 4 | 4 | 16'-8" to 13'-2" | S | | | | 1'-2" 1 |
| Ap805 | 26 | 26 | 52 | 1'-6" | S | | | | |
| Ap501 | 20 | 20 | 40 | 21'-3" | S | | | | |
| Ap502 | 40 | 40 | 80 | 8'-9" | S | | | | |

Reinforcement included for payment with item I-7

PREPARED BY
CAPITOL ENGINEERING ASSOCIATES, DILLSBURG, PA.
FOR

STATE OF OHIO
DEPARTMENT OF HIGHWAYS
DIVISION OF DESIGN AND CONSTRUCTION
BUREAU OF BRIDGES

APPROACH SLAB &
BEAM SPLICE DETAILS
BRIDGE NO. LAK-2-1673
RELOC. S. R. 2 UNDER RELOC. MANTLE ROAD
LAKE COUNTY
STA. 783+61.13

| | | | | | |
|----------|--------|--------|---------|---------------|---------|
| DESIGNED | DRAWN | TRACED | CHECKED | REVIEWED DATE | REVISED |
| M.J.F. | M.J.F. | FWB | L.L.D. | G.S.W. | |
| L.L.D. | | | M.J.F. | M.C.P. | |