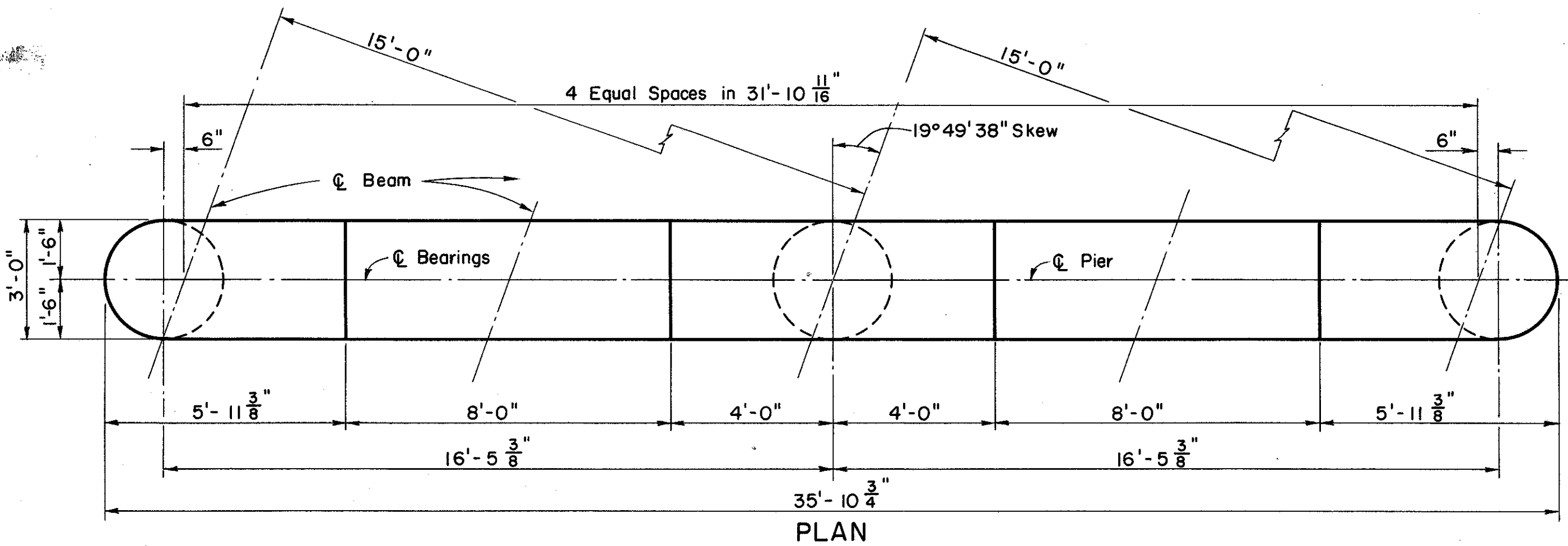
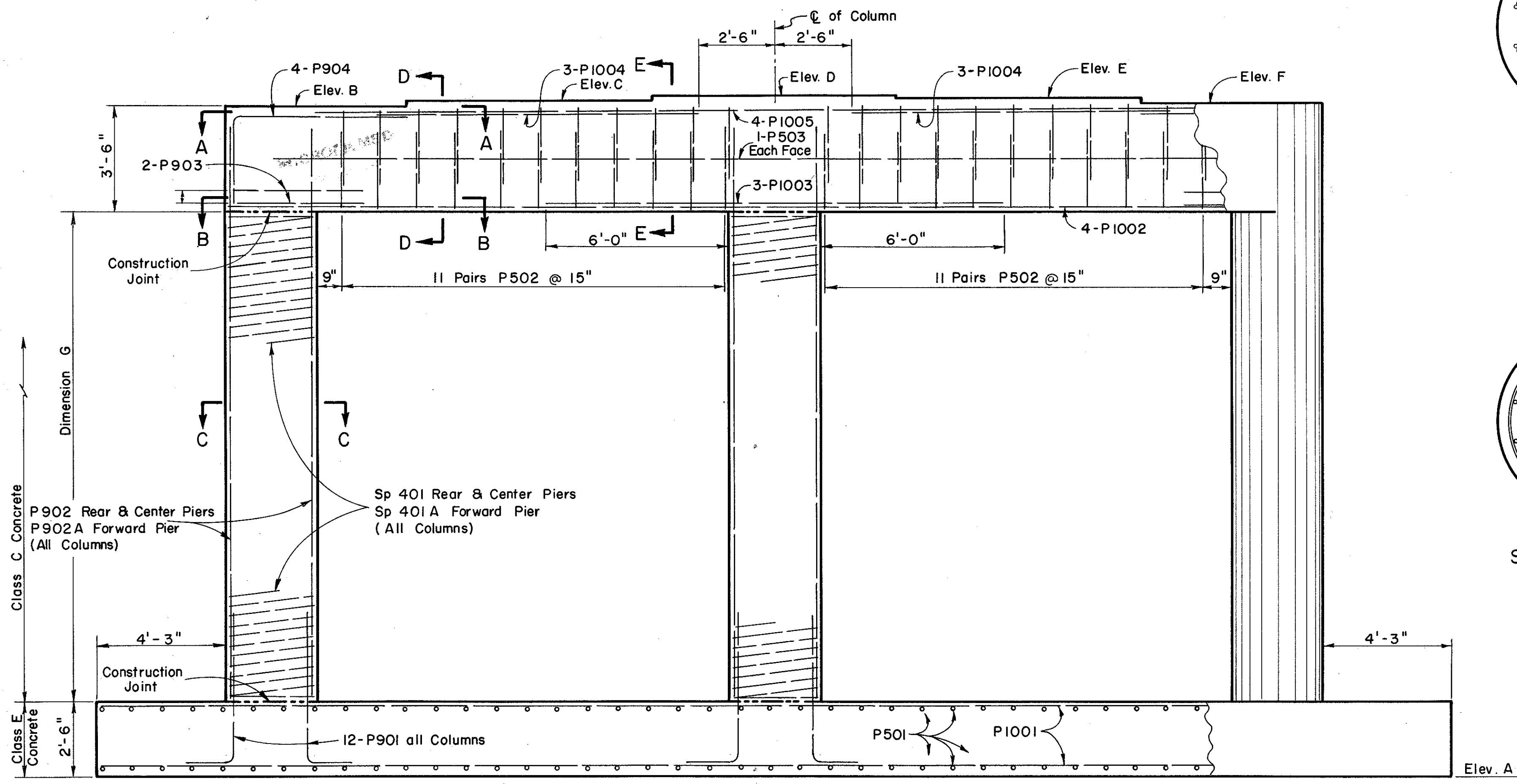


LAKE COUNTY
LAK-2-1649

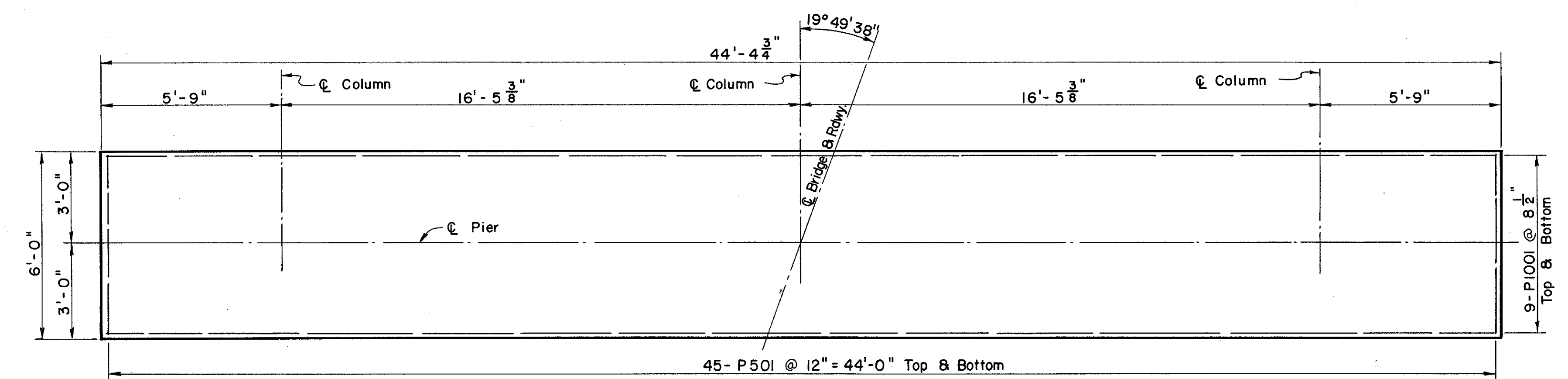
MICROFILMED
MAR 3 0 1984



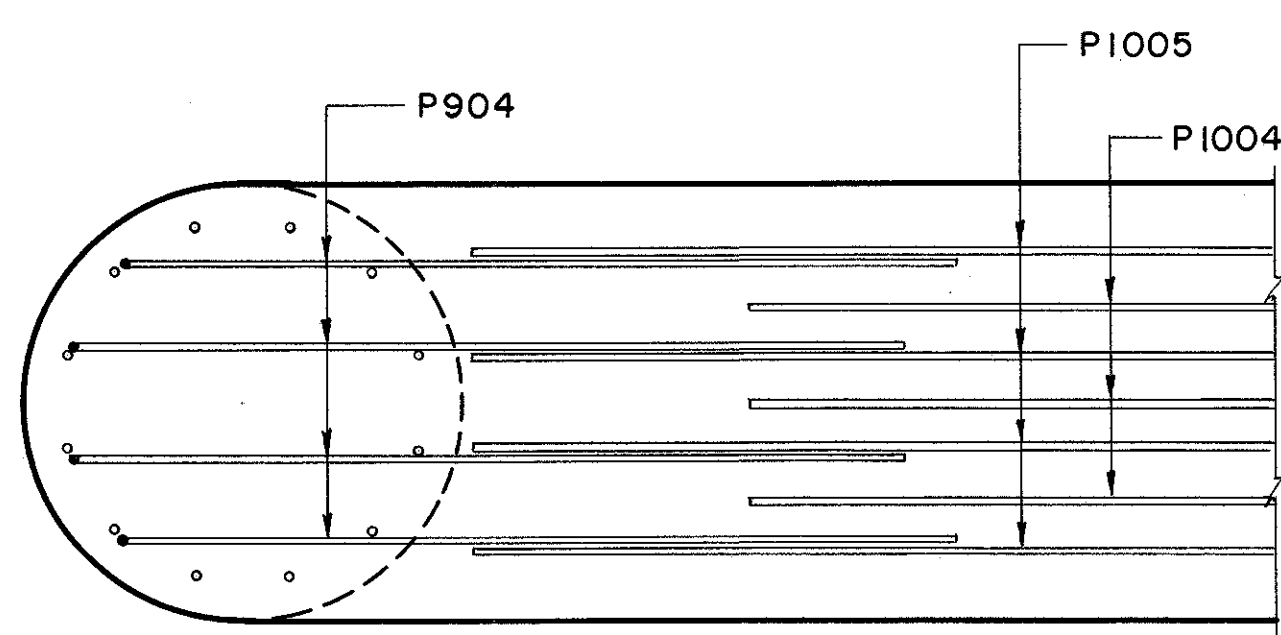
PLAN



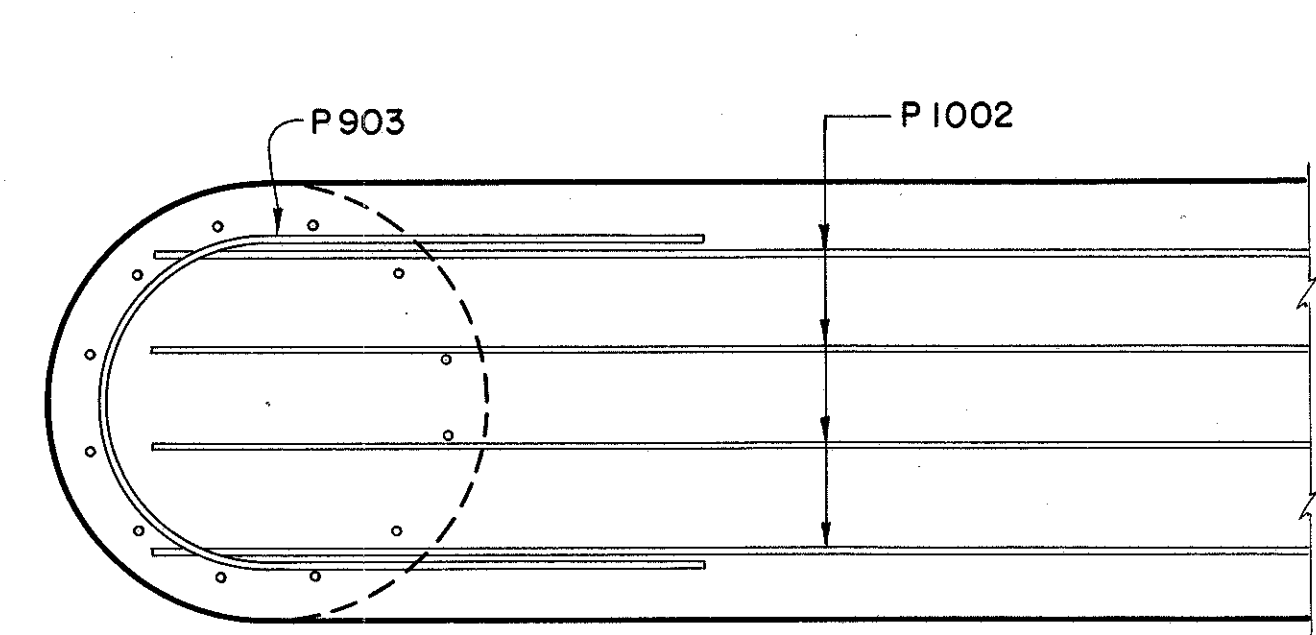
ELEVATION



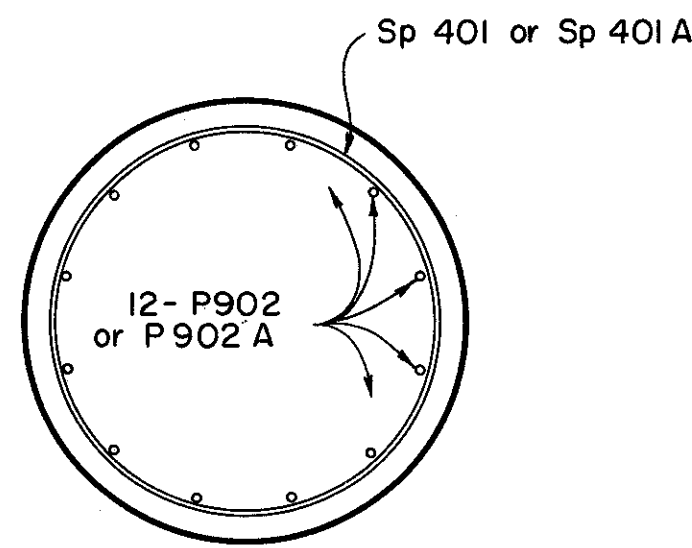
FOOTING PLAN



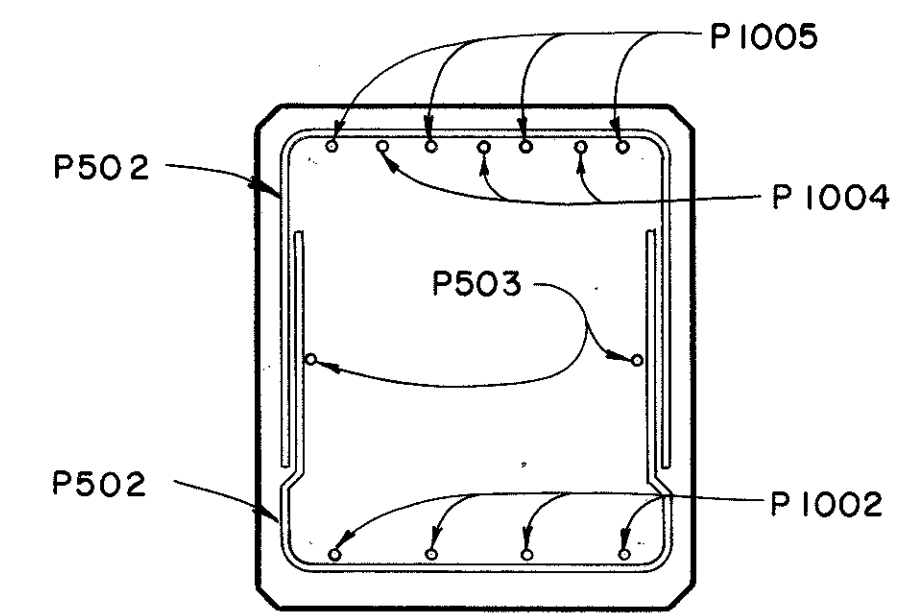
SECTION A-A



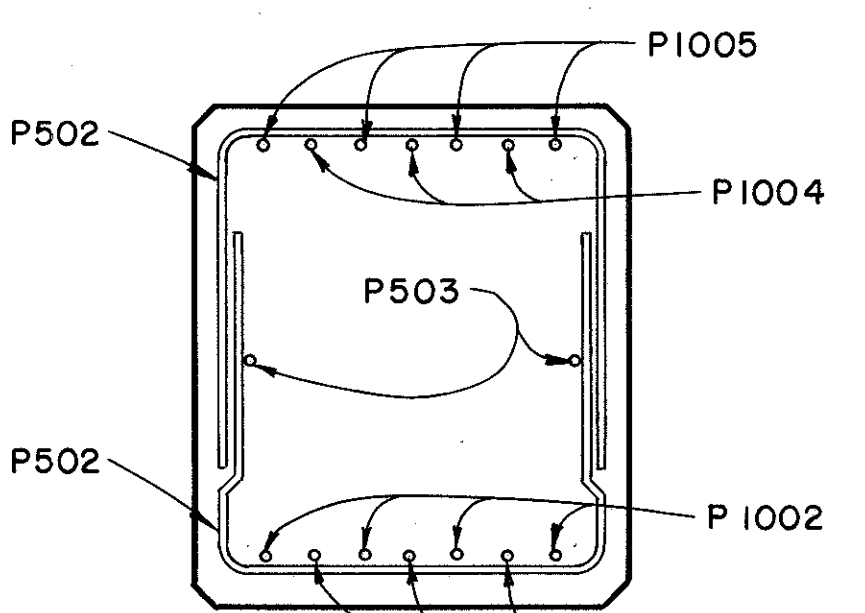
SECTION B-B



SECTION C-C



SECTION D-D



SECTION E-E

NOTES:

- BRIDGE SEAT REINFORCING: Special care shall be taken in placing reinforcing steel in the vicinity of the bridge seats so as to avoid interference with the drilling of anchor bar holes.
- REINFORCING BARS are the same for all Piers except the reinforcement in the columns as noted.
- MAX. FOUNDATION PRESSURE is 2.4 tons per S.F.
- ALL REINFORCING STEEL shall have a minimum cover of 2" unless otherwise shown.

PIER	ELEVATIONS						DIMENSION
	A	B	C	D	E	F	
Rear Pier	612.40	633.18	633.36	633.54	633.49	633.43	14.78
Center Pier	613.60	634.39	634.57	634.75	634.70	634.64	14.79
Forward Pier	612.40	636.22	636.40	636.58	636.52	636.47	17.82

PREPARED BY
CAPITOL ENGINEERING ASSOCIATES, DILLSBURG, PA.
FOR

STATE OF OHIO
DEPARTMENT OF HIGHWAYS
DIVISION OF DESIGN AND CONSTRUCTION
BUREAU OF BRIDGES

PIERS
BRIDGE NO. LAK-2-1673
RELOC. S.R. 2 UNDER RELOC. MANTLE ROAD
LAKE COUNTY
STA. 783+ 61.13

DESIGNED I.B.M. M.C.P.	DRAWN M.J.F.	TRACED FWB	CHECKED L.L.D. M.J.F.	REVIEWED DATE G.S.W. M.C.P.	REVISED
------------------------------	-----------------	---------------	-----------------------------	-----------------------------------	---------