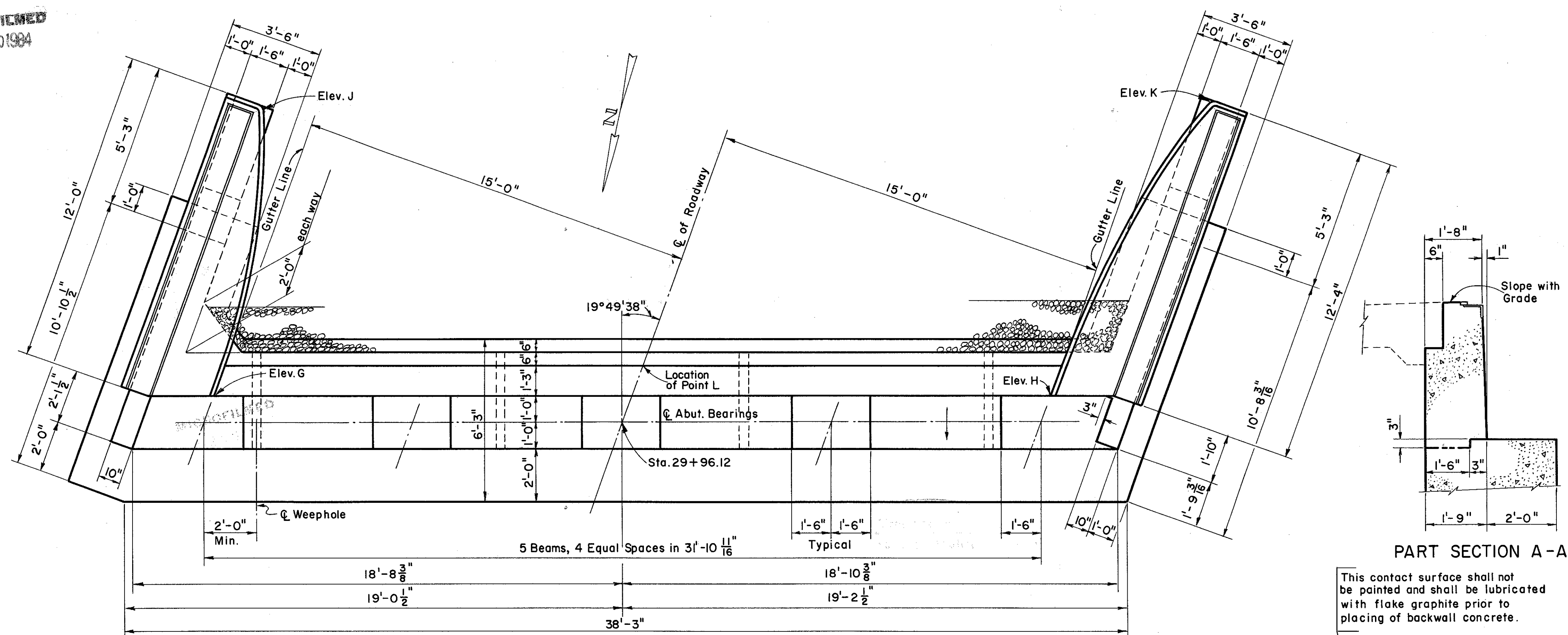


MICROFILMED
MAR 3 01984

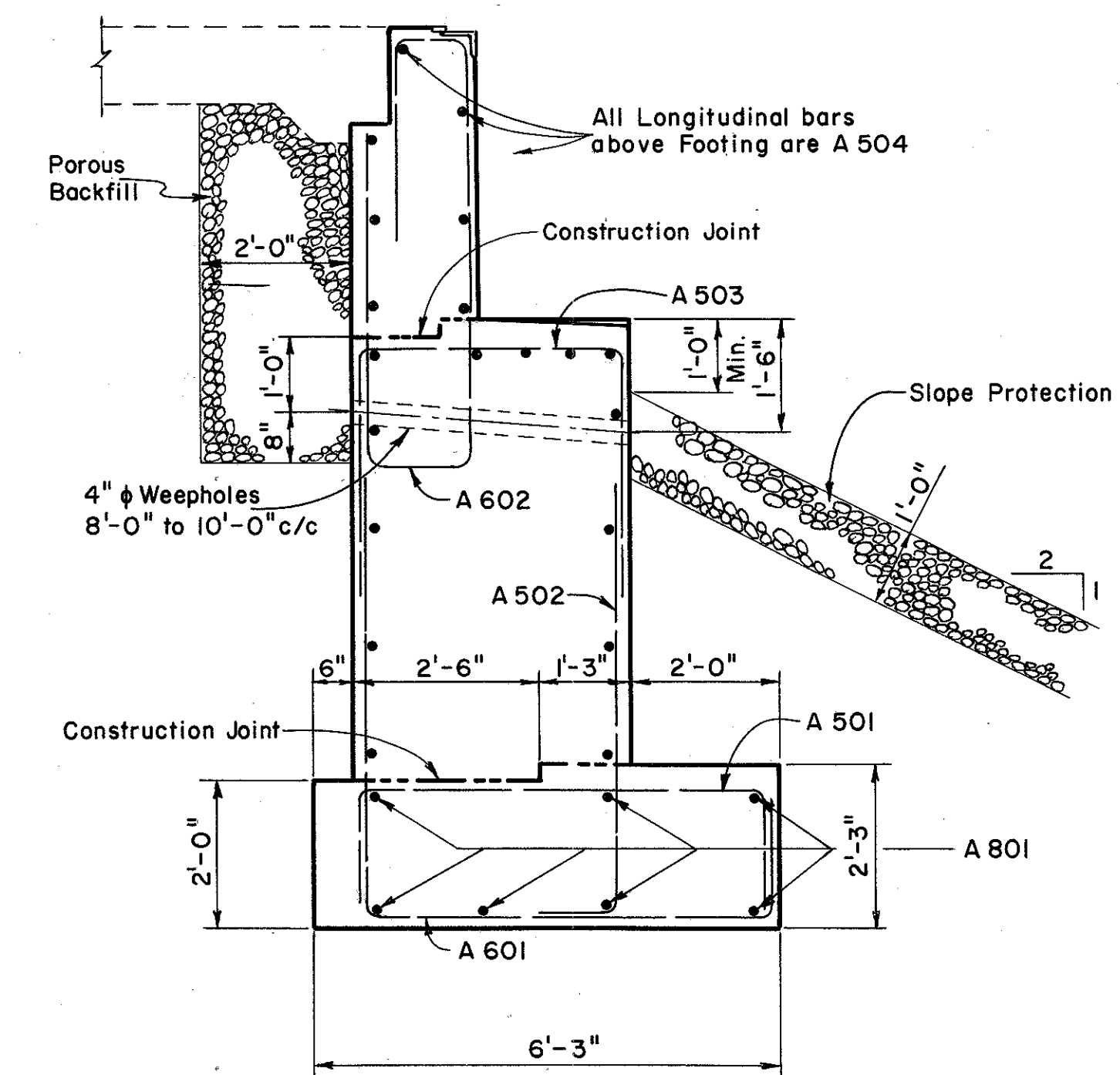
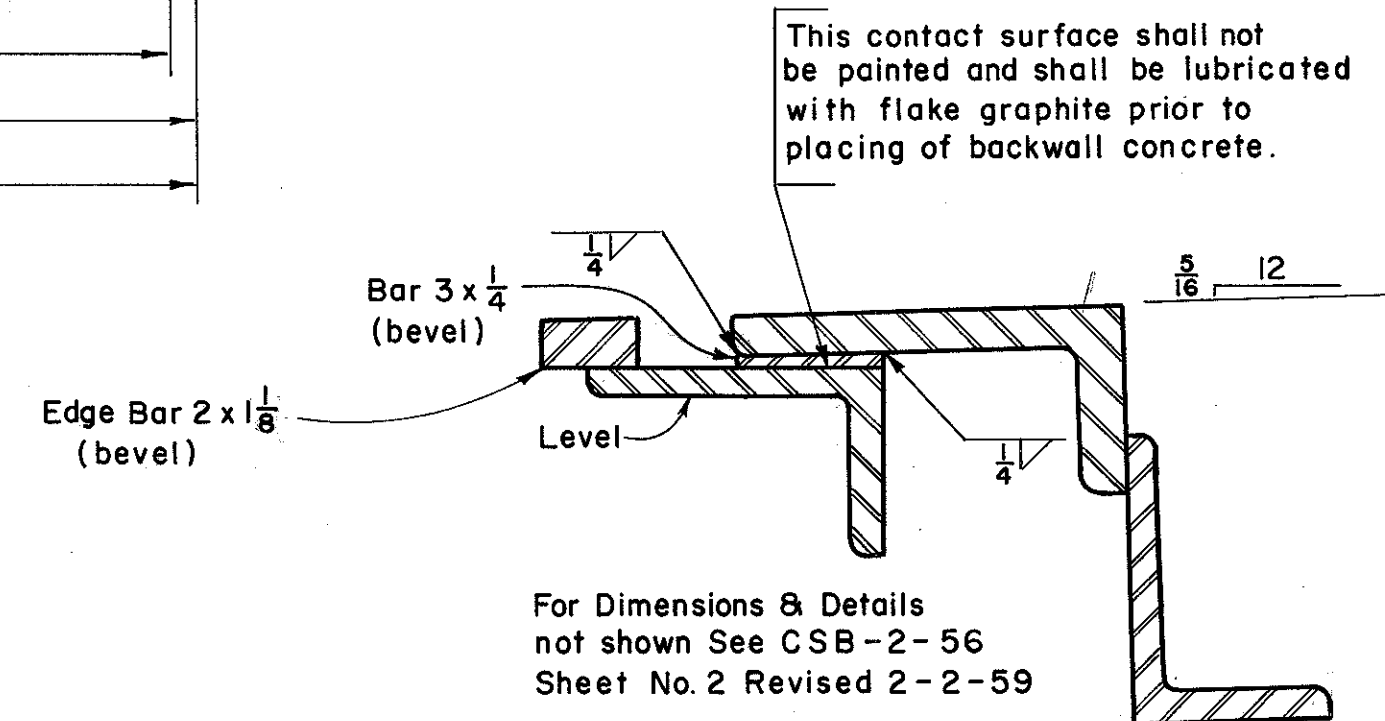
FED. RD. DIVISION	STATE	PROJECT	236 313
2	OHIO		

LAKE COUNTY
LAK-2-16.49



PLAN

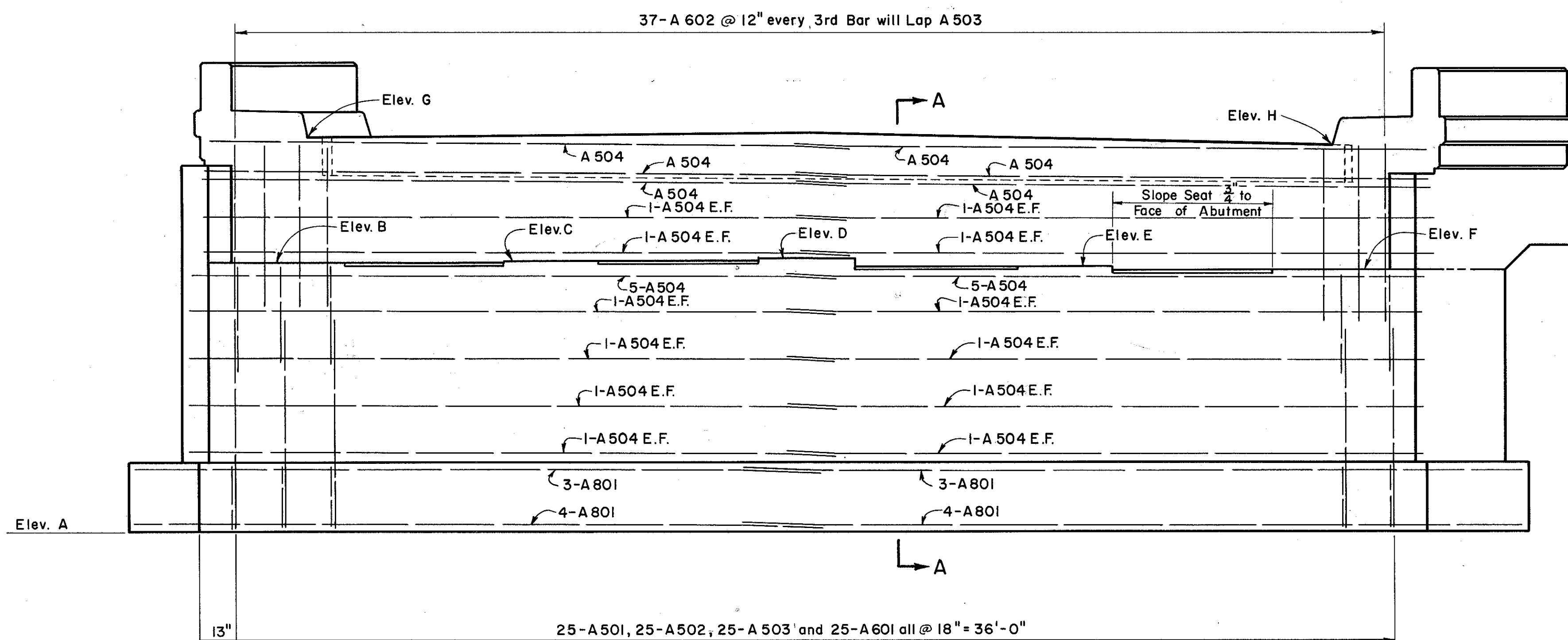
PART SECTION A-A



SECTION A-A

NOTES:
 All reinforcing steel shall have a minimum of 3" cover in the bottom of footing, 2" elsewhere.
 Bridge Seat Reinforcing: Special care shall be taken in placing reinforcing steel in the vicinity of the bridge seats so as to avoid interference with the drilling of anchor bar holes.
 E.F. = each face
 The railing tube on the wing walls shall be continuous for a minimum of two panel lengths.
 For additional notes see General Plan
 Max. foundation pressure 1.8 tons per Sq. Ft.

Point	Elevation
A	623.83
B	632.33
C	632.38
D	632.44
E	632.26
F	632.08
G	636.13
H	635.88
J	635.84
K	635.55
L	636.21



ELEVATION

PREPARED BY
CAPITOL ENGINEERING ASSOCIATES, DILLSBURG, PA.
FOR

STATE OF OHIO
DEPARTMENT OF HIGHWAYS
DIVISION OF DESIGN AND CONSTRUCTION
BUREAU OF BRIDGES

REAR ABUTMENT
BRIDGE NO. LAK-2-1673
RELOC. S. R. 2 UNDER RELOC. MANTLE ROAD
LAKE COUNTY
STA. 783+61.13

DESIGNED M.C.P. L.L.D.	DRAWN M.J.F.	TRACED FWB	CHECKED L.L.D. M.J.F.	REVIEWED DATE G.S.W. M.C.P.	REVISED
------------------------------	-----------------	---------------	-----------------------------	-----------------------------------	---------