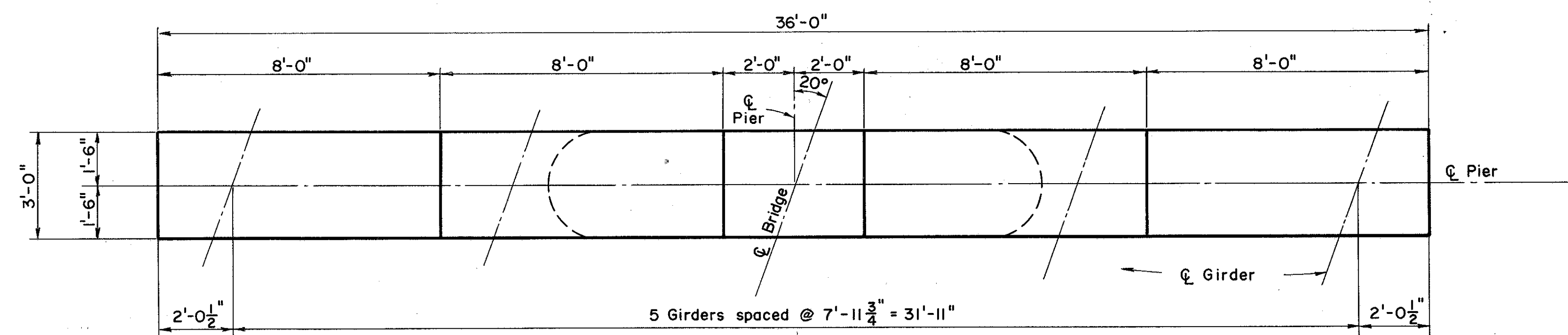


MICROFILMED
MAR 29 1984

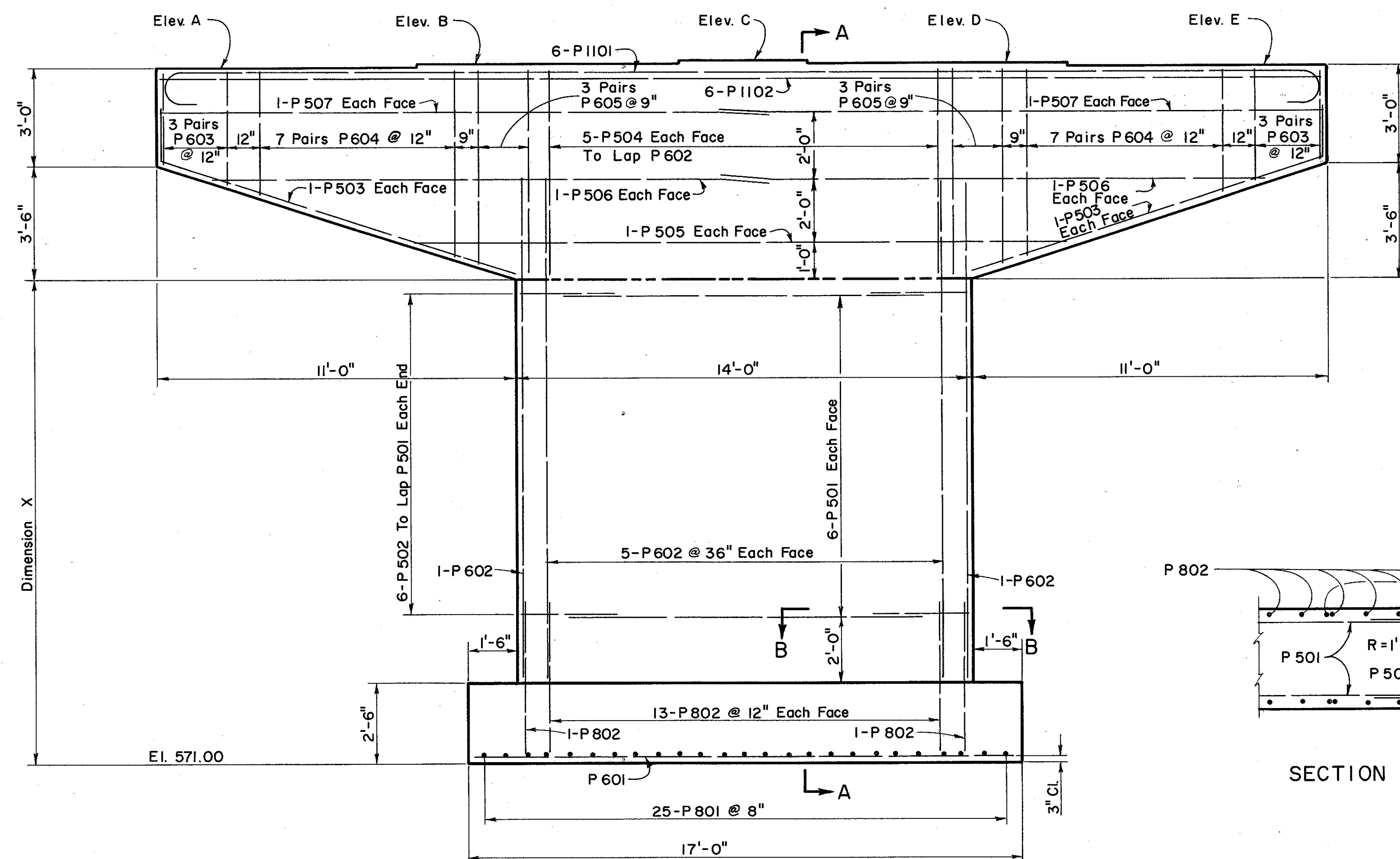
FED. RD. DIVISION	STATE	PROJECT
2	OHIO	

229
313

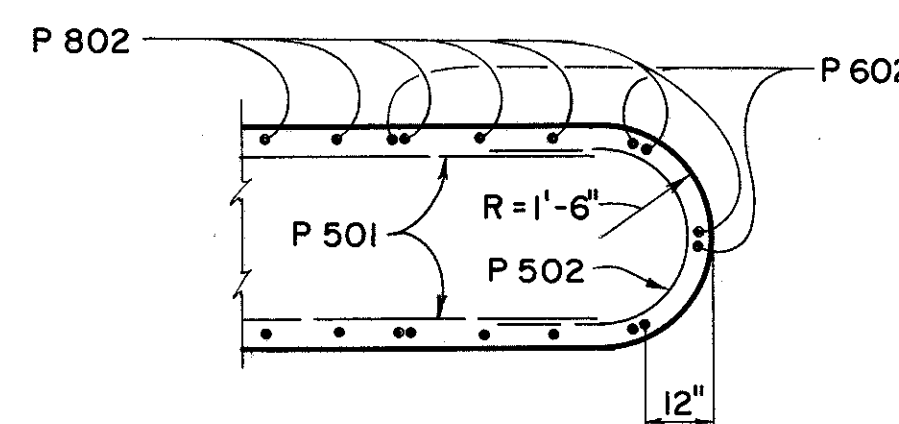
LAKE COUNTY
LAK - 2 - 16.49



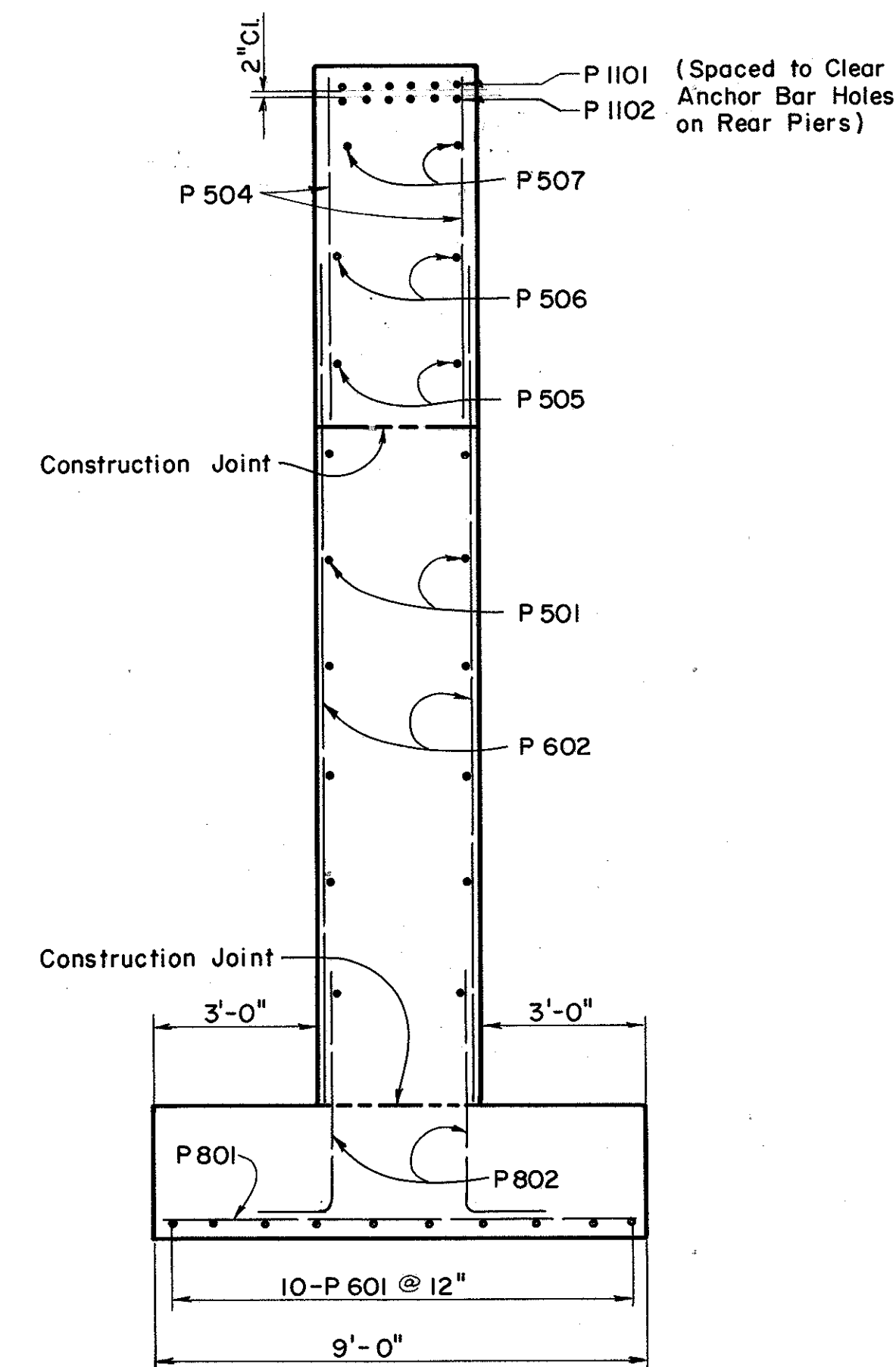
PLAN OF PIER CAP



ELEVATION



SECTION B-B



SECTION A-A

Footing Concrete - Class E
Concrete Above Footing - Class C
Cover of Reinforcement - 3" Bottom of Footing,
2" Elsewhere

PIER	ELEVATIONS					DIM. X
	A	B	C	D	E	
Left Rear	590.05	590.19	590.33	590.23	590.14	12.55
Right Rear	590.26	590.40	590.54	590.45	590.35	12.76
Left Forward	591.02	591.17	591.32	591.24	591.15	13.52
Right Forward	591.32	591.47	591.62	591.54	591.46	13.82

PREPARED BY
CAPITOL ENGINEERING ASSOCIATES, DILLSBURG, PA.
FOR

STATE OF OHIO
DEPARTMENT OF HIGHWAYS
DIVISION OF DESIGN AND CONSTRUCTION
BUREAU OF BRIDGES

PIER DETAILS
BRIDGE NO. LAK-2-1652 L&R
RELOC. SR. 2 OVER GRAND RIVER
LAKE COUNTY
STA. 772 + 03.61
STA. 774 + 68.39

DESIGNED M.C.P. L.L.D.	DRAWN M.J.F.	TRACED F.W.B.	CHECKED L.L.D. M.J.F.	REVIEWED DATE G.S.W. M.C.P.	REVISED
------------------------------	-----------------	------------------	-----------------------------	-----------------------------------	---------