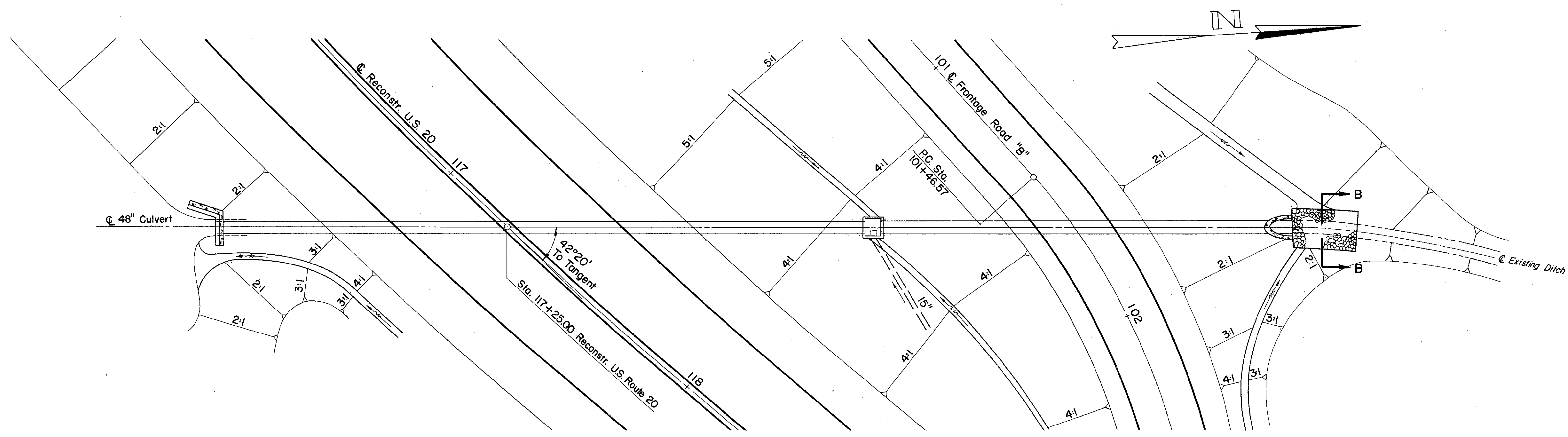


LAKE COUNTY
LAK - 2-16.49



DUMPED ROCK, SECTION B-B
SEE SHEET 223
S = 2:1 B.W. = 4.0' D=1'

FOR SODDING DETAIL
SEE SHEET 223

FOR ADDITIONAL DETAILS
SEE SHEET 38

Area = 257 Acres
Q25 = 163 C.F.S.

CULVERT DATA

TYPE : Culvert with HW No. 3, Type B Headwall Rt. & HW-E Headwall Lt. & No. 2-5 C.B. Lt.
 SIZE : 48" x 340'
 WORK REQUIRED : Build a 48" pipe culvert with a HW No. 3, Type B, $\phi = 45^\circ$ Headwall on the right, a HW-E Headwall on the left & a No. 2-5 C.B. on the left. Sod on Headwalls as shown.

ESTIMATED QUANTITIES

I-1 48" Pipe Class A-1 Sec. M-6.6(b)	340 L.F.
I-2 Masonry (Headwall)	11.16 C.Y.
I-8 No. 2-5 Catch Basin	1 Ea.
I-10 Dumped Rock For Channel Protection	19 C.Y.
L-10 Sodding	7 S.Y.

