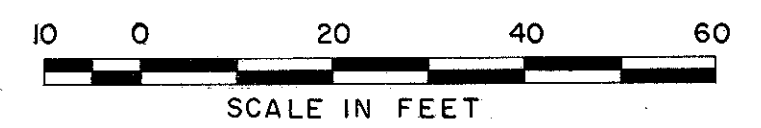
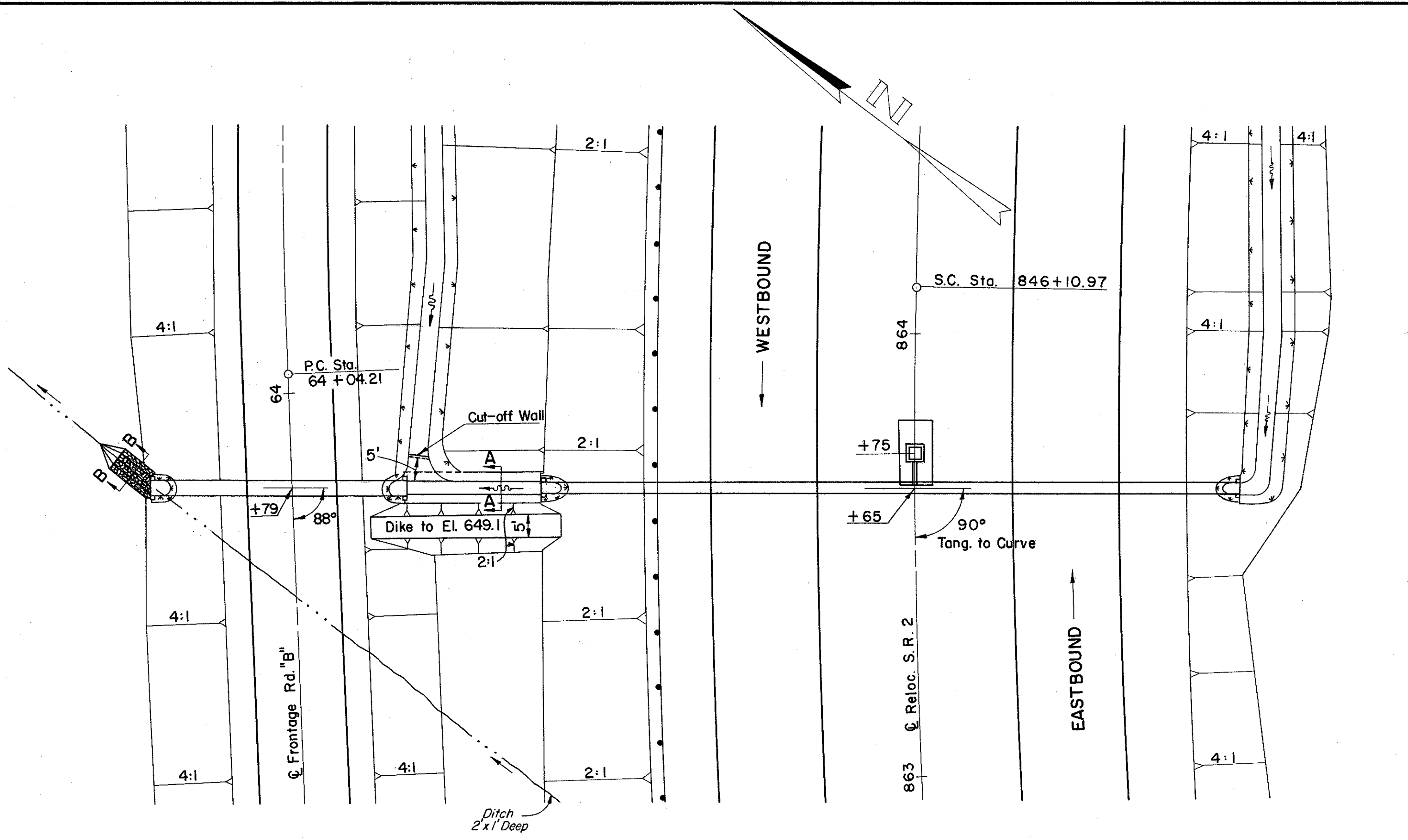


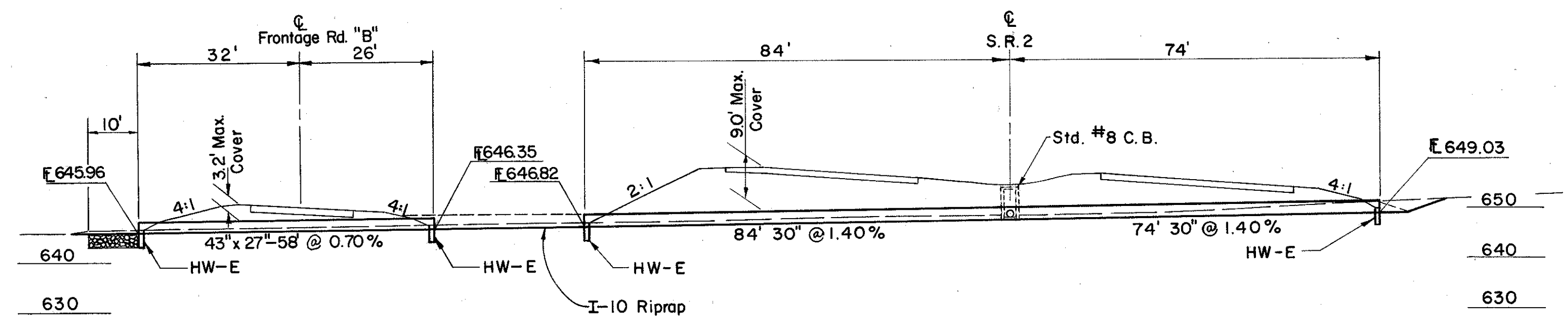
LAKE COUNTY  
LAK-2-16.49



Area = 22.7 Acres  
Q<sub>25</sub> = 29.4 C.F.S.

Area = 14 Acres  
Q<sub>25</sub> = 22.2 C.F.S.

FOR ADDITIONAL DETAILS  
SEE SHEETS 32 & 223



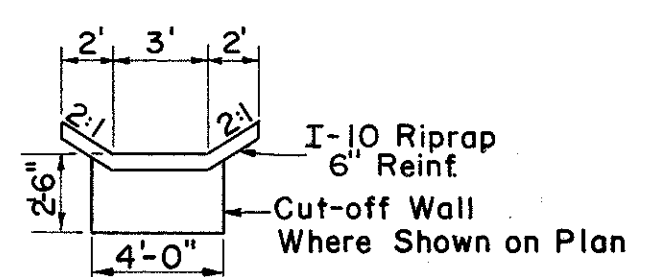
CULVERT DATA

TYPE: Pipe culvert with HW-E Headwalls  
SIZE: 30" x 158" & 43" x 27" x 58"  
WORK REQUIRED: Build a 30" pipe culvert under S.R.2. Construct dike on left as shown, and build a 43" x 27" pipe culvert under frontage road, constructing outlet ditch as shown.

ESTIMATED QUANTITIES

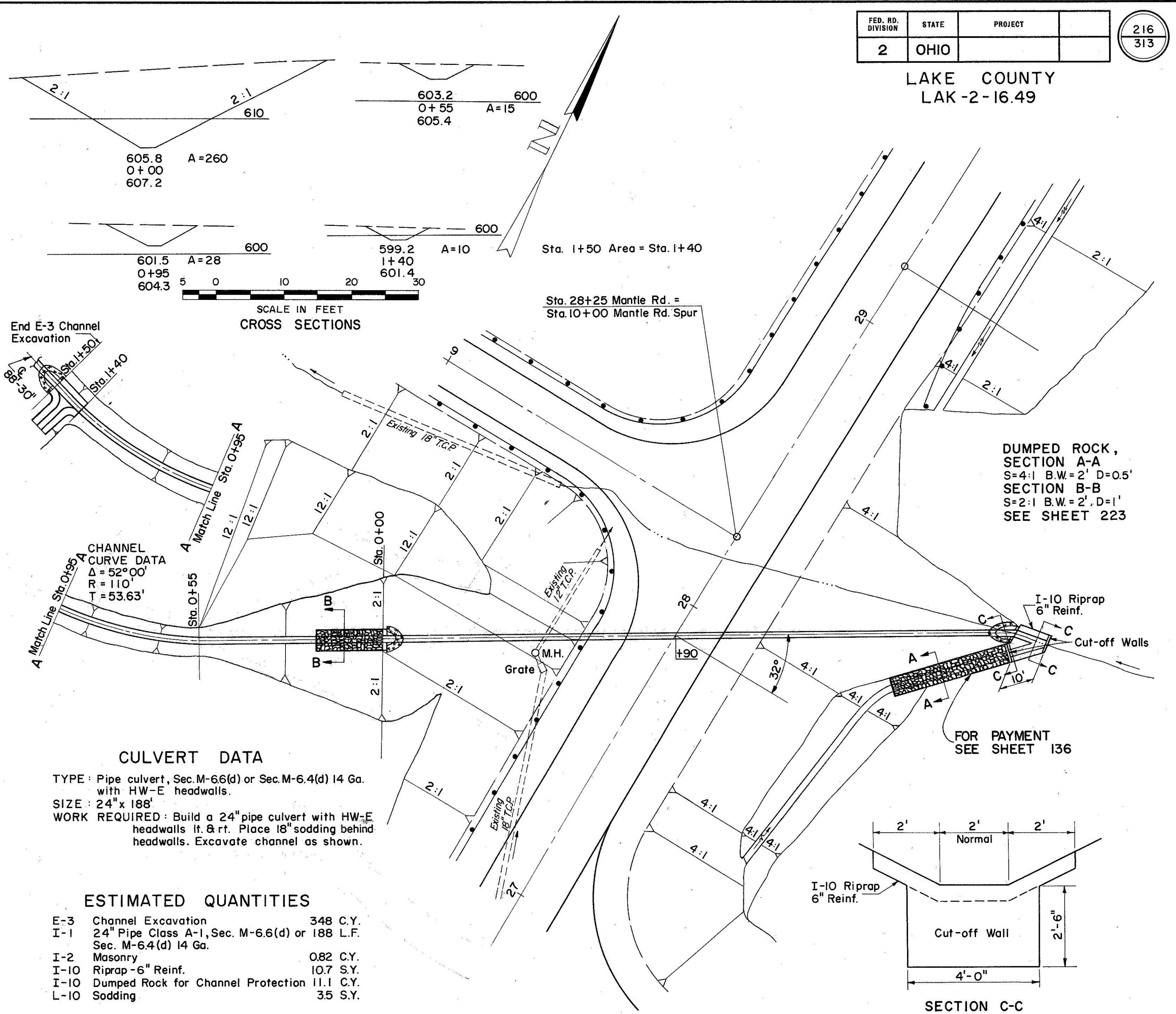
E-3 Channel Excavation	6 C.Y.
L-10 Sodding	13 C.Y.
I-2 Masonry (Headwalls)	2.04 C.Y.
I-1 30" Pipe Class A-1, Sec. M-6.6(b) or M-6.8(b)	158 L.F.
I-1 43" x 27" Pipe Class G-1, Sec. M-6.4(J)(d)	58 L.F.
I-5 15" x 30" Tee for Class A-1, Sec. M-6.6(b) or M-6.8(b)	1 Ea.
I-10 Dumped Rock for Channel Protection	6 C.Y.
I-10 Riprap - 6" Reinf.	30 S.Y.

DUMPED ROCK  
SECTION B-B  
S=2:1 B.W.=3' D=0.5'  
SEE SHEET 223



SECTION A-A

STRUCTURE NO. LAK-2-1825  
PIPE CULVERT - S.R.2 STA. 863+65 AND  
STA. 63+79 FRONTAGE RD. "B"



CROSS SECTIONS



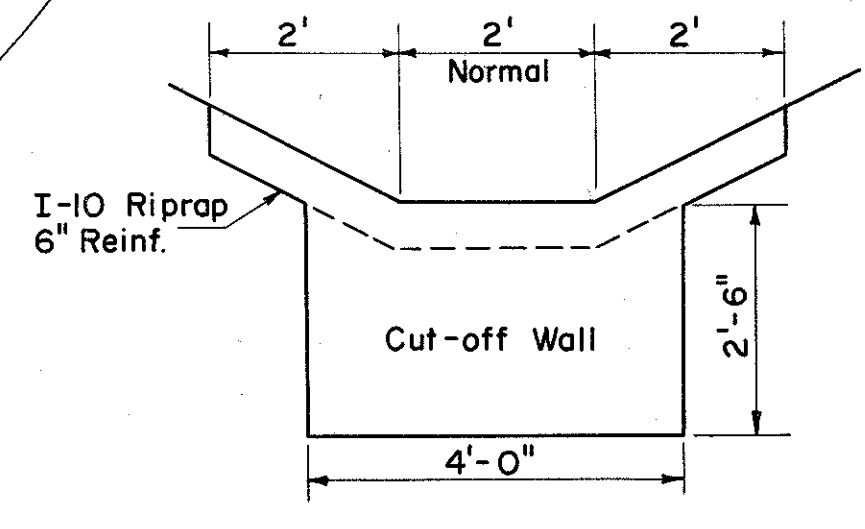
CULVERT DATA

TYPE: Pipe culvert, Sec. M-6.6(d) or Sec. M-6.4(d) 14 Ga. with HW-E headwalls.  
SIZE: 24" x 188"  
WORK REQUIRED: Build a 24" pipe culvert with HW-E headwalls lf. & rt. Place 18" sodding behind headwalls. Excavate channel as shown.

ESTIMATED QUANTITIES

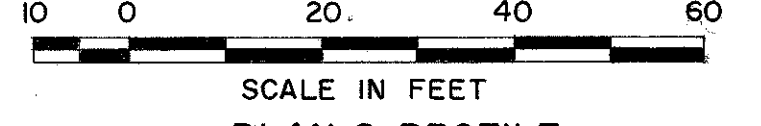
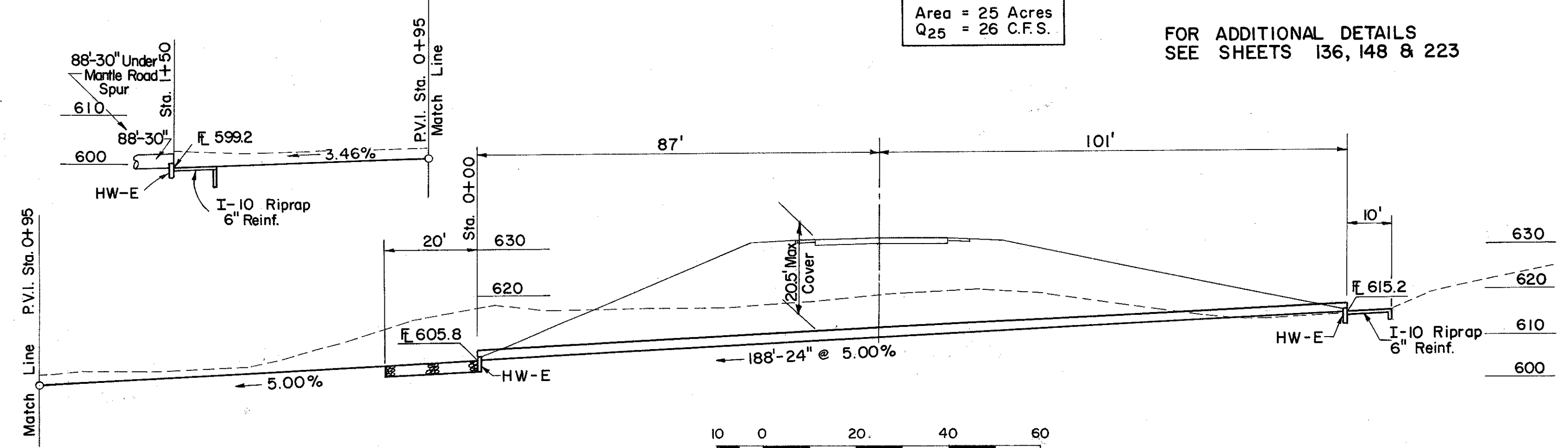
E-3 Channel Excavation	348 C.Y.
I-1 24" Pipe Class A-1, Sec. M-6.6(d) or 188 L.F. Sec. M-6.4(d) 14 Ga.	188 L.F.
I-2 Masonry	0.82 C.Y.
I-10 Riprap - 6" Reinf.	10.7 S.Y.
I-10 Dumped Rock for Channel Protection	11.1 C.Y.
L-10 Sodding	35 S.Y.

DUMPED ROCK,  
SECTION A-A  
S=4:1 B.W.=2' D=0.5'  
SECTION B-B  
S=2:1 B.W.=2' D=1'  
SEE SHEET 223



SECTION C-C  
No Scale

FOR ADDITIONAL DETAILS  
SEE SHEETS 136, 148 & 223



SCALE IN FEET  
PLAN & PROFILE

PIPE CULVERT MANTLE RD. STA. 27+90