

SPIRAL DATA RELOC. S.R. 2

S.R. 2	TANGENT TO SPIRAL			SPIRAL TO CURVE			CURVE TO SPIRAL			SPIRAL TO TANGENT			O _s	L _s	T _s	L.T.	S.T.
	STATION	N	E	STATION	N	E	STATION	N	E	STATION	N	E					
W.B. C													3°00'	200.00'		133.35'	66.68'
W.B. C	881+01.37	763,558.330	2,355,042.743	883+01.37	763,593.950	2,355,239.514	890+58.25	763,895.150	2,355,928.460	892+58.25	764,015.413	2,356,088.235	3°00'	200.00'	588.90'	133.35'	66.68'
E.B. C CONSTR.													6°00'	400.00'	928.93'	266.82'	133.47'
E.B. C CONSTR.	882+33.43	763,426.053	2,355,191.188										8°00'	200.00'		66.79'	133.47'
E.B. C	882+33.43	763,392.053	2,355,191.310	884+33.43	763,402.106	2,355,390.880	889+36.30	763,635.886	2,355,824.485	890+86.30	763,754.746	2,355,915.865	6°00'	150.00'		100.06'	50.05'
E.B. C							892+79.62	763,906.736	2,356,035.07	894+72.94	764,035.155	2,356,179.360	7°40'	193.32'		129.00'	64.55'

NOTE: Cross Sections for Frontage Road "B" to its terminus with U.S. 20 are plotted on Cross Sections for U.S. 20, all sections being normal to the C of U.S. 20.

FED. RD. DIVISION	STATE	PROJECT	
2	OHIO		

211
313

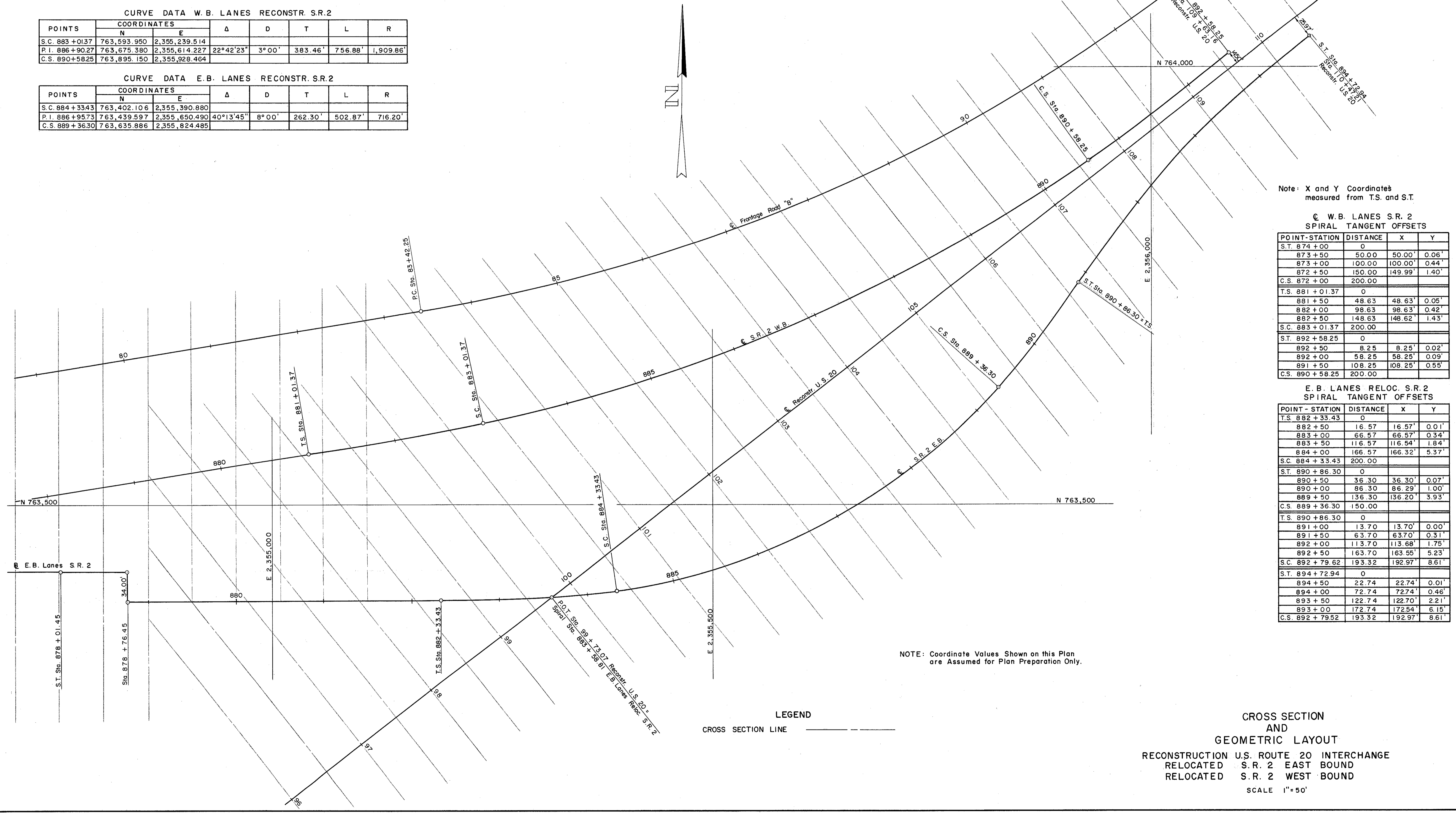
LAKE COUNTY
LAK - 2- 1649

CURVE DATA W.B. LANES RECONSTR. S.R.2

POINTS	COORDINATES		Δ	D	T	L	R
	N	E					
S.C. 883+01.37	763,593.950	2,355,239.514					
P.I. 886+90.27	763,675.380	2,355,614.227	22°42'23"	3°00'	383.46'	756.88'	1,909.86'
C.S. 890+58.25	763,895.150	2,355,928.464					

CURVE DATA E.B. LANES RECONSTR. S.R.2

POINTS	COORDINATES		Δ	D	T	L	R
	N	E					
S.C. 884+33.43	763,402.106	2,355,390.880					
P.I. 886+95.73	763,439.597	2,355,650.490	40°13'45"	8°00'	262.30'	502.87'	716.20'
C.S. 889+36.30	763,635.886	2,355,824.485					



Note: X and Y Coordinates measured from T.S. and S.T.

W.B. LANES S.R. 2
SPIRAL TANGENT OFFSETS

POINT-STATION	DISTANCE	X	Y
S.T. 874+00	0		
873+50	50.00	50.00'	0.06'
873+00	100.00	100.00'	0.44'
872+50	150.00	149.99'	1.40'
C.S. 872+00	200.00		
T.S. 881+01.37	0		
881+50	48.63	48.63'	0.05'
882+00	98.63	98.63'	0.42'
882+50	148.63	148.62'	1.43'
S.C. 883+01.37	200.00		
S.T. 892+58.25	0		
892+50	8.25	8.25'	0.02'
892+00	58.25	58.25'	0.09'
891+50	108.25	108.25'	0.55'
C.S. 890+58.25	200.00		

E.B. LANES RELOC. S.R. 2
SPIRAL TANGENT OFFSETS

POINT-STATION	DISTANCE	X	Y
T.S. 882+33.43	0		
882+50	16.57	16.57'	0.01'
883+00	66.57	66.57'	0.34'
883+50	116.57	116.54'	1.84'
884+00	166.57	166.32'	5.37'
S.C. 884+33.43	200.00		
S.T. 890+86.30	0		
890+50	36.30	36.30'	0.07'
890+00	86.30	86.29'	1.00'
889+50	136.30	136.20'	3.93'
C.S. 889+36.30	150.00		
T.S. 890+86.30	0		
891+00	13.70	13.70'	0.00'
891+50	63.70	63.70'	0.31'
892+00	113.70	113.68'	1.75'
892+50	163.70	163.55'	5.23'
S.C. 892+79.62	193.32	192.97'	8.61'
S.T. 894+72.94	0		
894+50	22.74	22.74'	0.01'
894+00	72.74	72.74'	0.46'
893+50	122.74	122.70'	2.21'
893+00	172.74	172.54'	6.15'
C.S. 892+79.52	193.32	192.97'	8.61'

NOTE: Coordinate Values Shown on this Plan are Assumed for Plan Preparation Only.

LEGEND
CROSS SECTION LINE

CROSS SECTION AND GEOMETRIC LAYOUT
RECONSTRUCTION U.S. ROUTE 20 INTERCHANGE
RELOCATED S.R. 2 EAST BOUND
RELOCATED S.R. 2 WEST BOUND
SCALE 1"=50'