

SPIRAL DATA RAMP GG

TANGENT TO SPIRAL			SPIRAL TO CURVE			Δ	L _s	L.T.	S.T.
STATION	N	E	STATION	N	E				
10+60.75	760,214.031	2,350,152.306	15+60.75	760,639.477	2,350,268.286	95° 29' 35"	500.00'	399.73'	228.36'

CURVE DATA RAMP GG

POINTS	COORDINATES		Δ	T	L	R
	N	E				
S.C. 15+60.75	760,639.476	2,350,268.286				
P.I. 19+66.17	760,904.304	2,349,961.317	139° 23' 32"	405.42'	364.93'	150.00'
P.C.C. 19+25.68	760,503.452	2,350,021.992				
P.T. 20+50.17	760,380.362	2,350,040.623	69° 20' 14"	124.49'	217.83'	180.00'
P.T. 21+43.51	760,354.361	2,350,162.369				

RAMP GG
SPIRAL TANGENT OFFSETS

L	X	Y
50'	50.00'	0.28'
100'	99.96'	2.22'
150'	149.66'	7.49'
200'	198.58'	17.69'
250'	245.69'	34.29'
300'	289.36'	58.47'
350'	327.37'	90.83'
400'	356.82'	131.07'
450'	374.62'	177.62'
500'	377.87'	227.31'

CURVE DATA RAMP HH

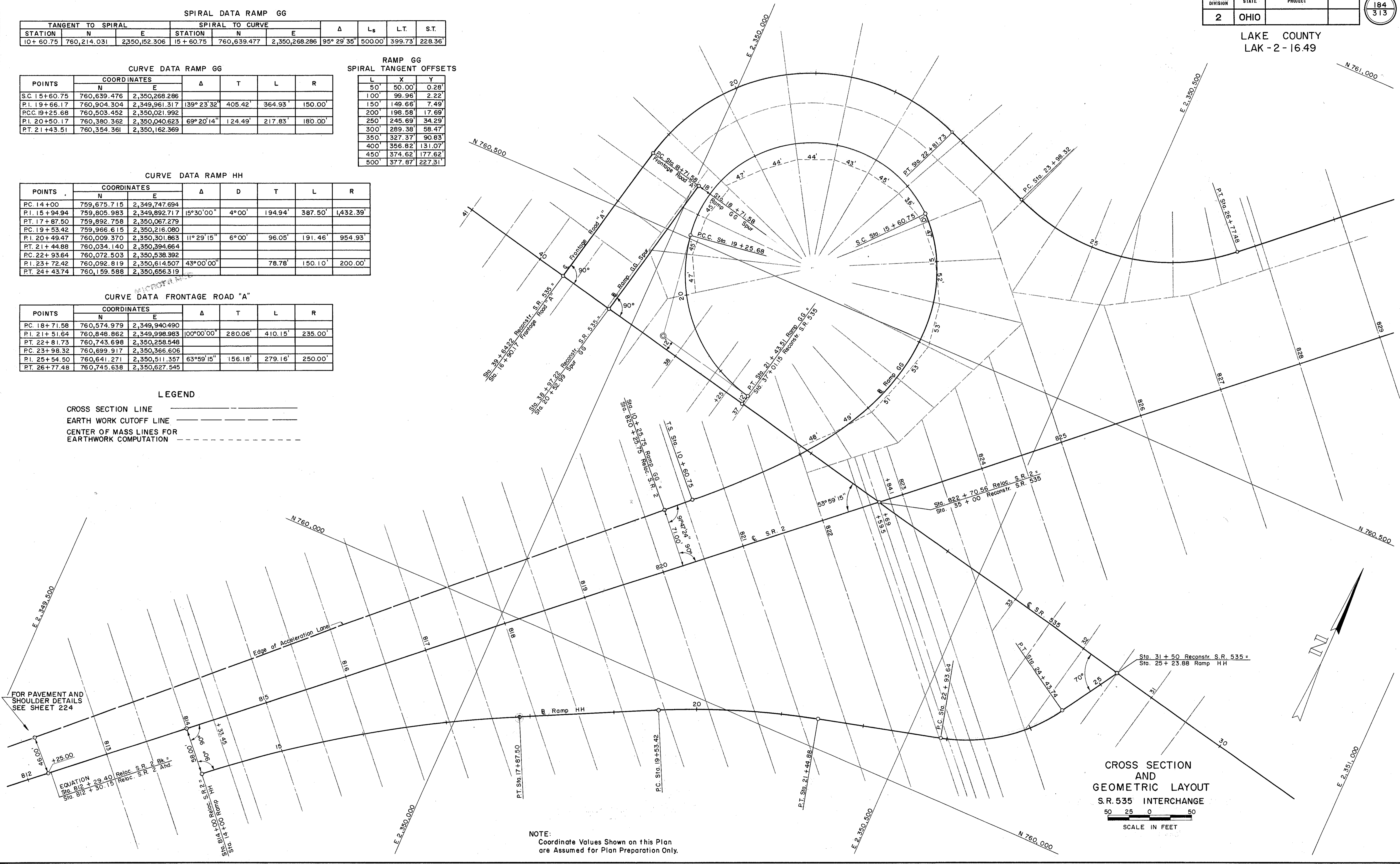
POINTS	COORDINATES		Δ	D	T	L	R
	N	E					
PC. 14+00	759,675.715	2,349,747.694					
P.I. 15+94.94	759,805.983	2,349,892.717	15° 30' 00"	4° 00'	194.94'	387.50'	1,432.39'
PT. 17+87.50	759,892.758	2,350,067.279					
PC. 19+53.42	759,966.615	2,350,216.080					
P.I. 20+49.47	760,009.370	2,350,301.863	11° 29' 15"	6° 00'	96.05'	191.46'	954.93'
PT. 21+44.88	760,034.140	2,350,394.664					
PC. 22+93.64	760,072.503	2,350,538.392					
P.I. 23+72.42	760,092.819	2,350,614.507	43° 00' 00"		78.78'	150.10'	200.00'
PT. 24+43.74	760,159.588	2,350,656.319					

CURVE DATA FRONTAGE ROAD "A"

POINTS	COORDINATES		Δ	T	L	R
	N	E				
PC. 18+71.58	760,574.979	2,349,940.490				
P.I. 21+51.64	760,848.862	2,349,998.983	100° 00' 00"	280.06'	410.15'	235.00'
PT. 22+81.73	760,743.698	2,350,258.548				
PC. 23+98.32	760,699.917	2,350,366.606				
P.I. 25+54.50	760,641.271	2,350,511.357	63° 59' 15"	156.16'	279.16'	250.00'
PT. 26+77.48	760,745.638	2,350,627.545				

LEGEND

- CROSS SECTION LINE ————
- EARTH WORK CUTOFF LINE - - - - -
- CENTER OF MASS LINES FOR EARTHWORK COMPUTATION - - - - -



CROSS SECTION AND GEOMETRIC LAYOUT
S.R. 535 INTERCHANGE

50 25 0 50
SCALE IN FEET

NOTE:
Coordinate Values Shown on this Plan
are Assumed for Plan Preparation Only.

FOR PAVEMENT AND SHOULDER DETAILS SEE SHEET 224

EQUATION
Sta. 812 + 29.40 Reloc. S.R. 2 Bk. =
Sta. 812 + 30.15 Reloc. S.R. 2 Ahd.