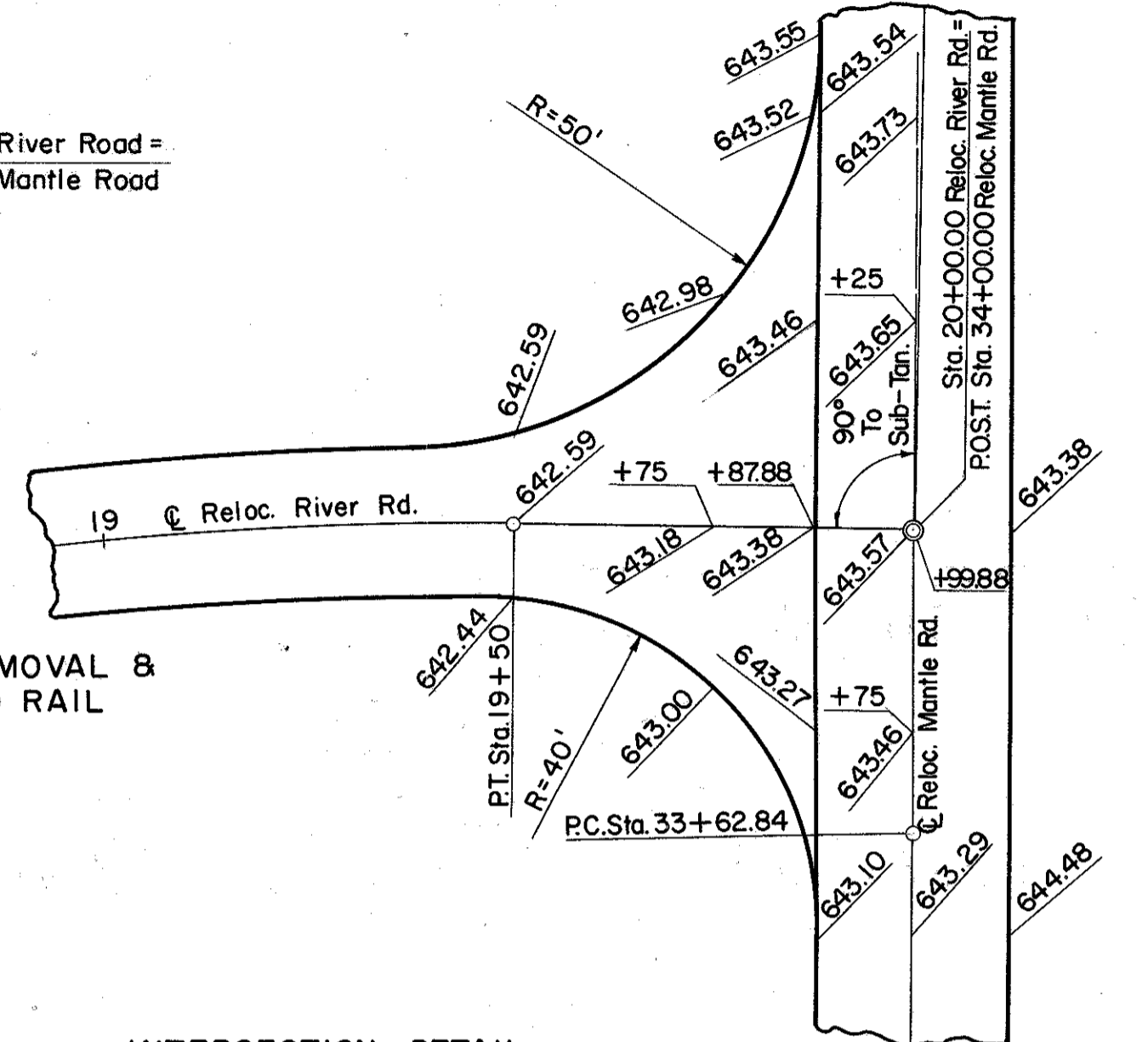
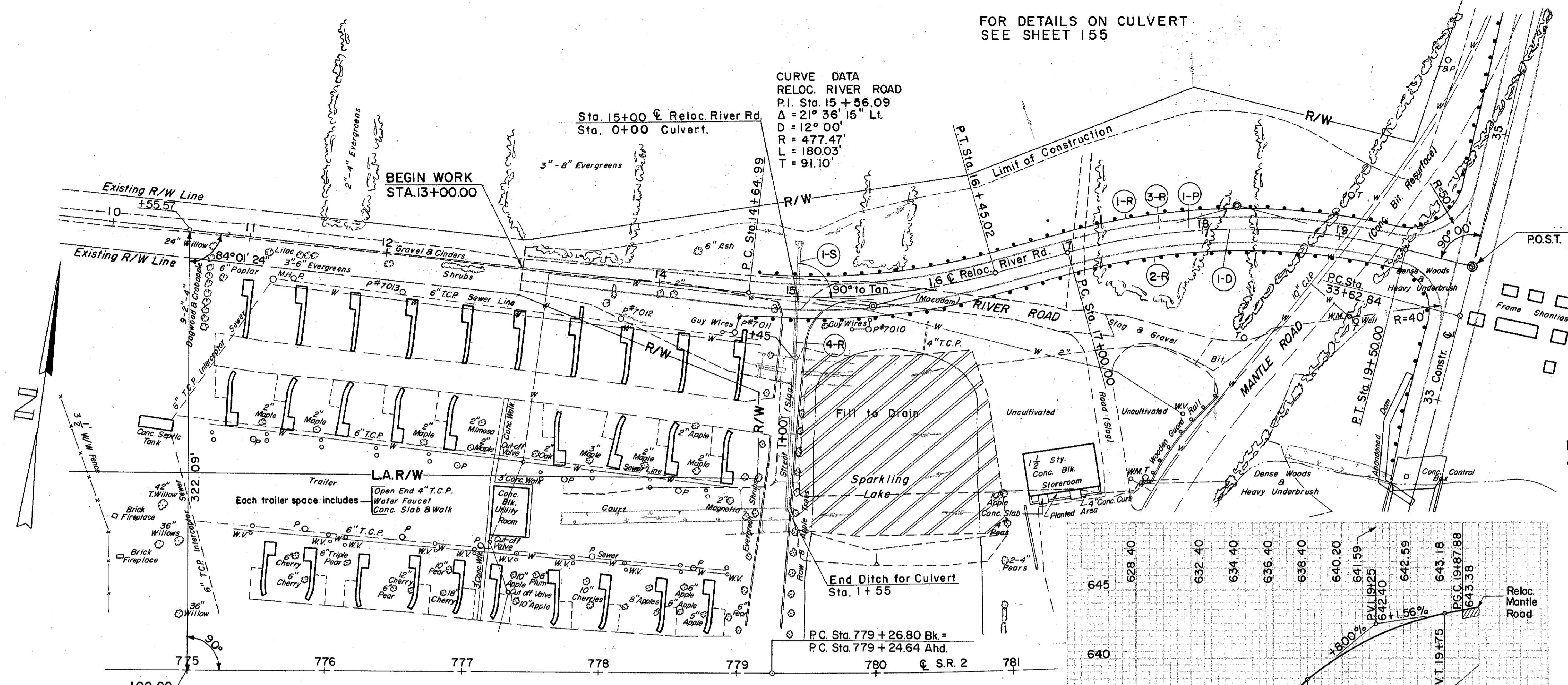


FOR DETAILS ON CULVERT  
SEE SHEET 155

CURVE DATA  
RELOC. RIVER ROAD  
P.I. Sta. 18+27.94  
Δ = 30° 00' Rt.  
D = 12° 00'  
R = 477.47'  
L = 250.00'  
T = 127.94'

CURVE DATA  
RELOC. RIVER ROAD  
P.I. Sta. 15+56.09  
Δ = 21° 36' 15" Lt.  
D = 12° 00'  
R = 477.47'  
L = 180.03'  
T = 91.10'



INTERSECTION DETAIL  
RELOC. RIVER ROAD AT RELOC. MANTLE ROAD

(P) PAVEMENT

REF. NO.	STATION	SIDE	B-19		I-22		T-30		T-35	
			AGGR. BASE COURSE		SUBBASE	BIT PRIME COAT	ASPHALTIC CONC. SURFACE COURSE TYPE A			
1-P	13+00	19+87.88	351		275	632	102			
TOTAL			351		275	632	102			

(R) ROADWAY

REF. NO.	STATION	SIDE	E-1		I-15		L-10	
			COMP. SUBGRADE		GUARD RAIL STEEL BEAM STD. TYPE (DEEP)	SODDING		
1-R	14+68	19+78	Lt.		537.5			
2-R	14+64	19+78	Rt.		537.5			
3-R	13+00	19+87.88		1,474				
4-R	15+00					3.5		
TOTAL				1,474	1,075.0	3.5		

(D) DRAINAGE

REF. NO.	STATION	SIDE	I-9	
			STONE UNDER DRAIN NO. 2	L.F.
1-D	13+00	19+87.88		276
TOTAL				276

(S) STRUCTURE

REF. NO.	STATION	SIDE	E-3		I-1		I-2	
			CHANNEL EXCAVATION		15" PIPE CLASS A-1 SEC. M-6.4(d), 6.6(b) OR 6.8(b)	MASONRY		
1-S	15+00		146		86		0.52	
TOTAL			146		86		0.52	

EXCAVATION = 165 C.Y.  
EMBANKMENT = 33,808 C.Y.  
EMBANKMENT - 20' = 40,570 C.Y.

RELOC. RIVER ROAD STA. 10+00 TO STA. 20+00

