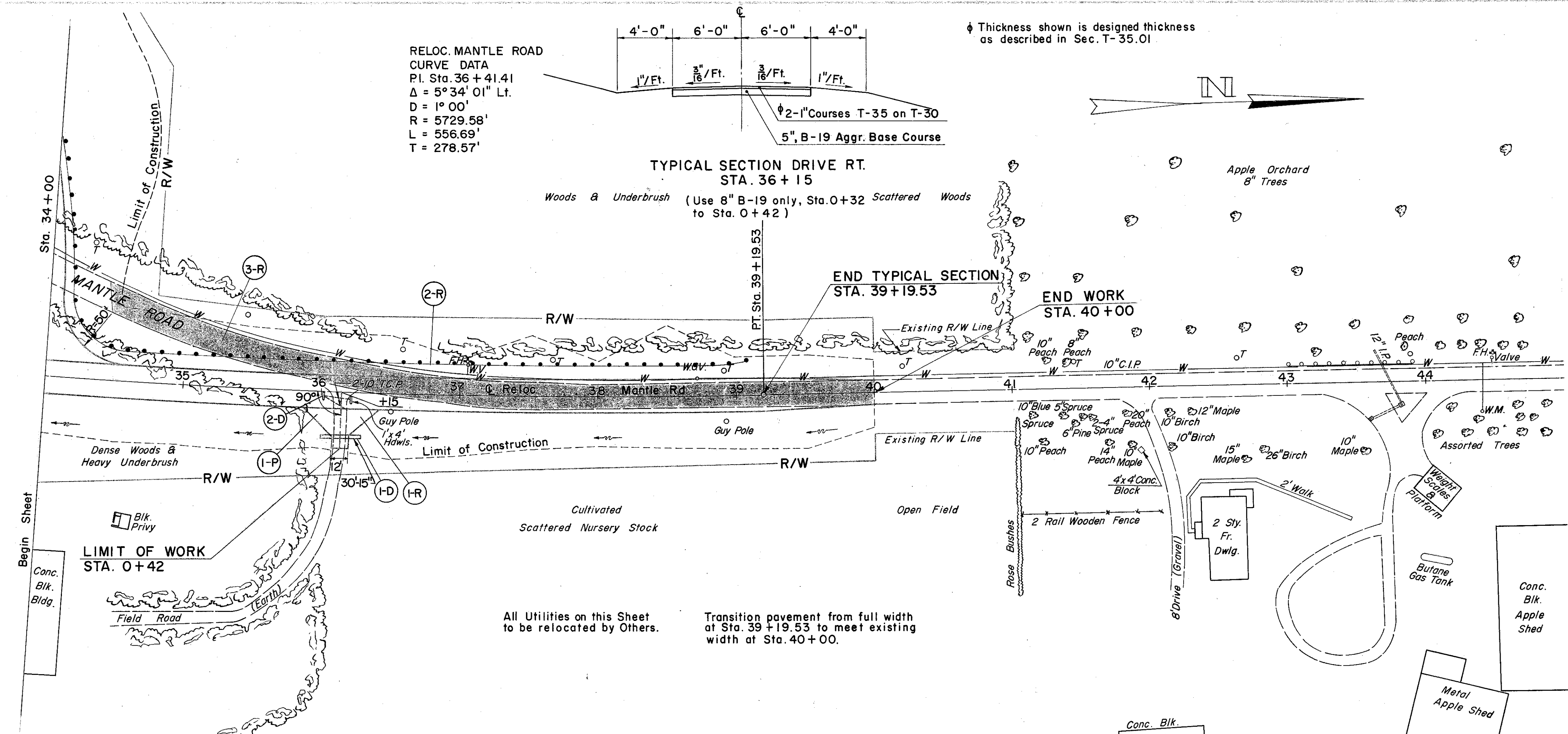
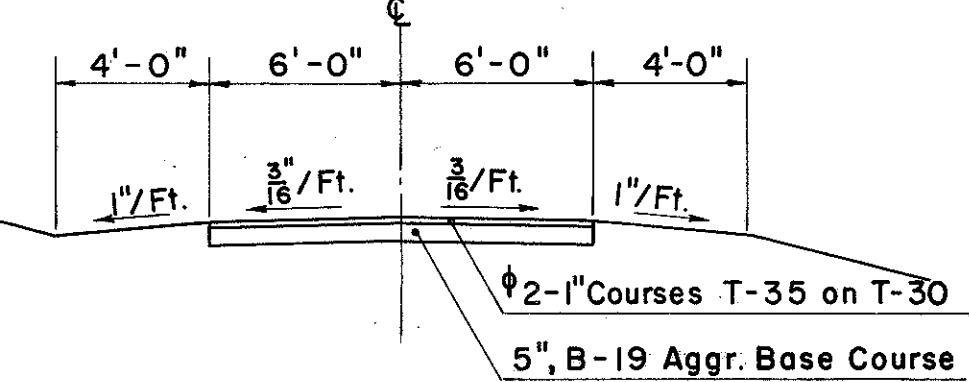


LAKE COUNTY
LAK-2-16.49



RELOC. MANTLE ROAD
CURVE DATA
P.I. Sta. 36 + 41.41
 $\Delta = 5^{\circ}34'01''$ Lt.
D = 1^{\circ}00'
R = 5729.58'
L = 556.69'
T = 278.57'



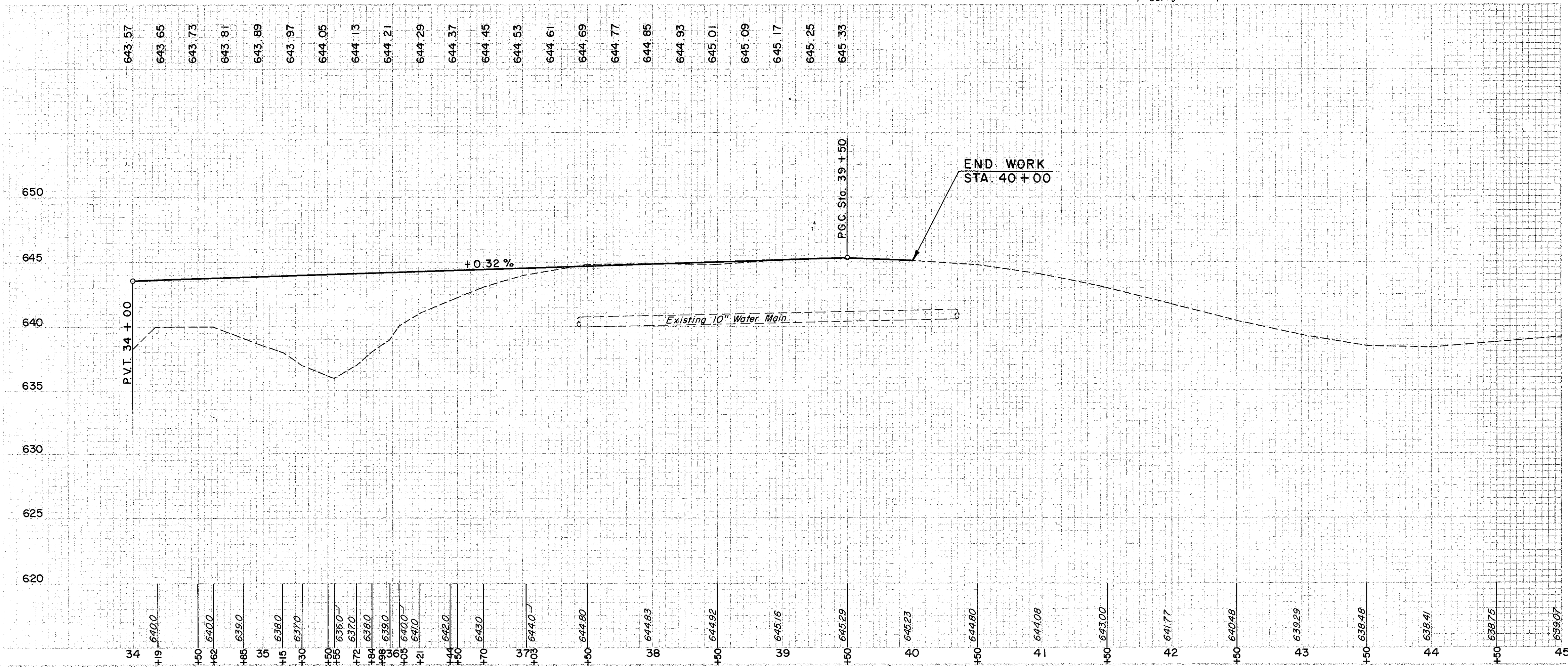
TYPICAL SECTION DRIVE RT.
STA. 36 + 15

Woods & Underbrush (Use 8" B-19 only, Sta. 0+32 Scattered Woods to Sta. 0+42)

END TYPICAL SECTION
STA. 39 + 19.53

END WORK
STA. 40 + 00

All Utilities on this Sheet to be relocated by Others.
Transition pavement from full width at Sta. 39 + 19.53 to meet existing width at Sta. 40 + 00.



(D) DRAINAGE

REF. NO.	STATION		SIDE	E-12	I-1
	FROM	TO		PIPE REMOVAL 15" AND UNDER	15" PIPE CLASS F-4
1-D	36+00	36+30	Rt.		30
2-D	36+02	36+22	Rt.	40	
TOTAL				40	30

(P) PAVEMENT

REF. NO.	STATION		SIDE	B-19	T-30	T-35
	FROM	TO		AGGR. BASE COURSE	BIT. PRIME COAT	ASPHALTIC CONC. SURFACE COURSE TYPE C
1-P	36+15		Rt.	13	28	4
TOTAL				13	28	4

(R) ROADWAY

REF. NO.	STATION		SIDE	E-1	I-15	E-8
	FROM	TO		COMP SUB-GRADE	GUARD RAIL STEEL BEAM STD. TYPE (DEEP)	REMOVAL & DISPOSAL OF EXISTING PAVEMENT
1-R	36+15		Rt.	84	L.F.	S.Y.
2-R	34+60	39+07	Lt.		450.0	
3-R	34+45	40+00	Rt.			1,120
TOTAL				84	450.0	1,120

EXCAVATION = 1,088 C.Y.
EMBANKMENT = 2,763 C.Y.
EMBANKMENT @ 20% = 3,316 C.Y.