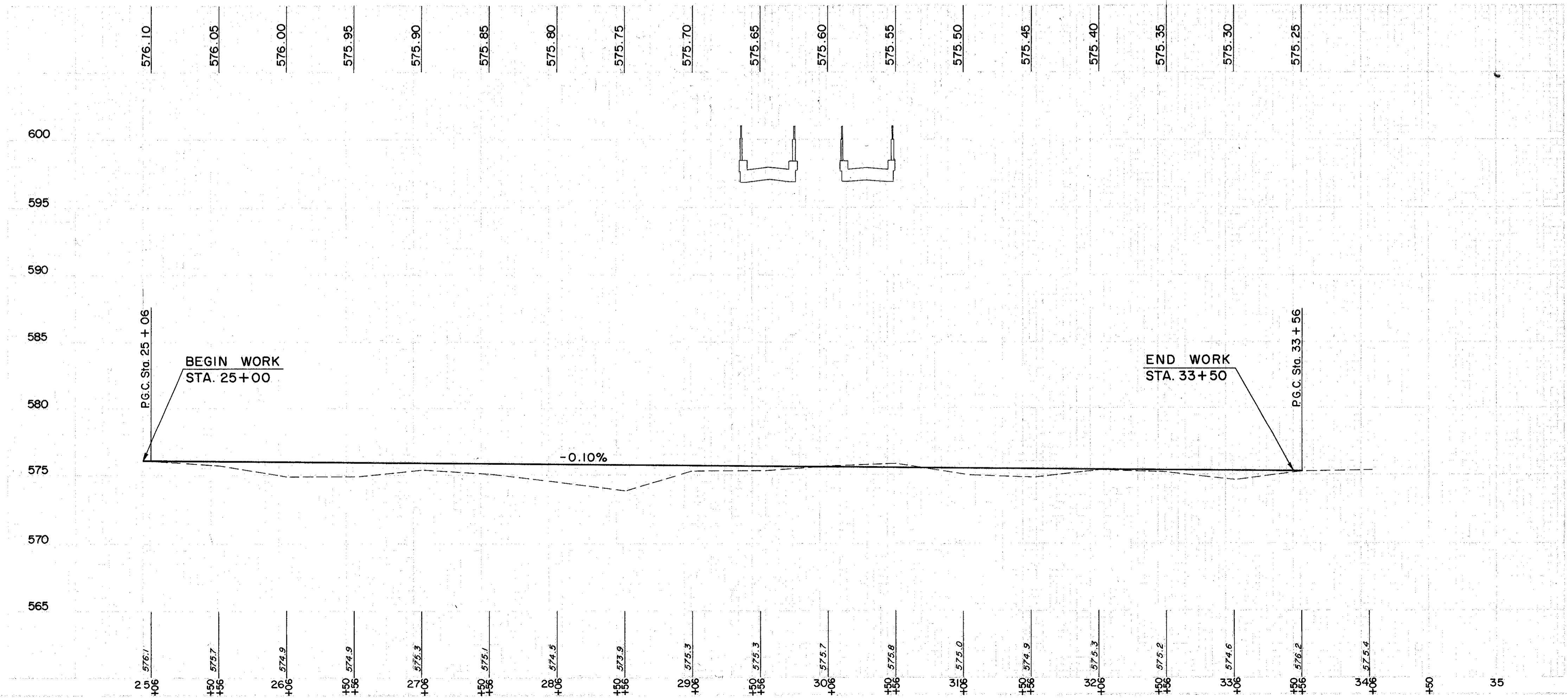
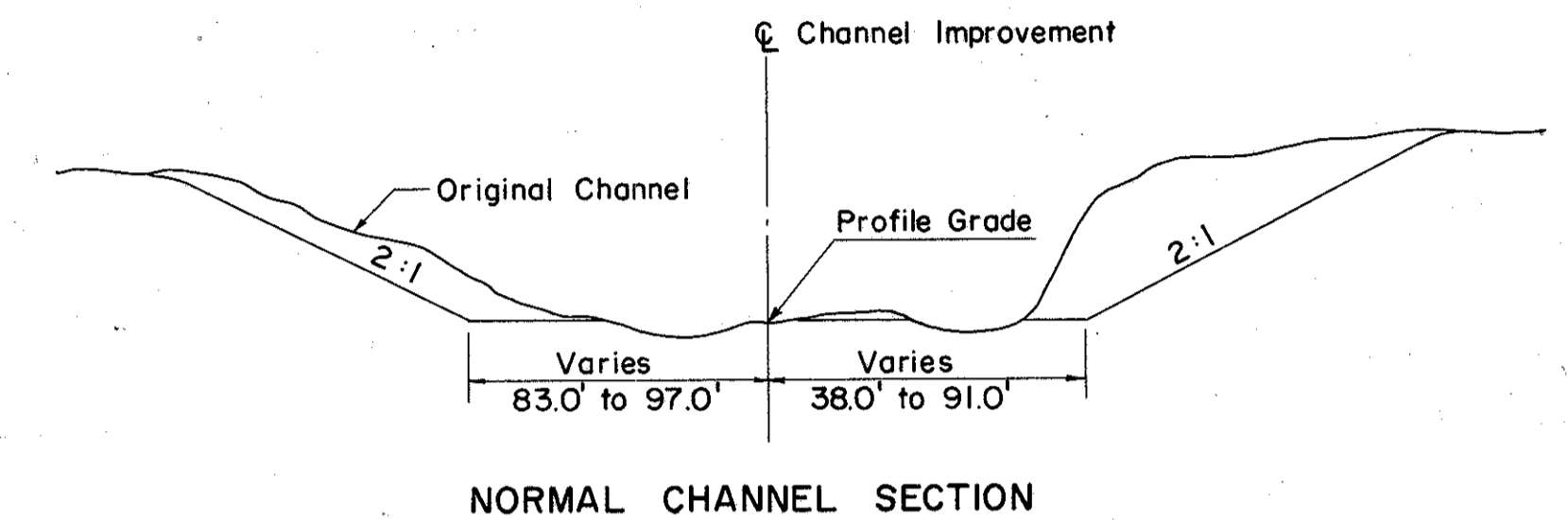
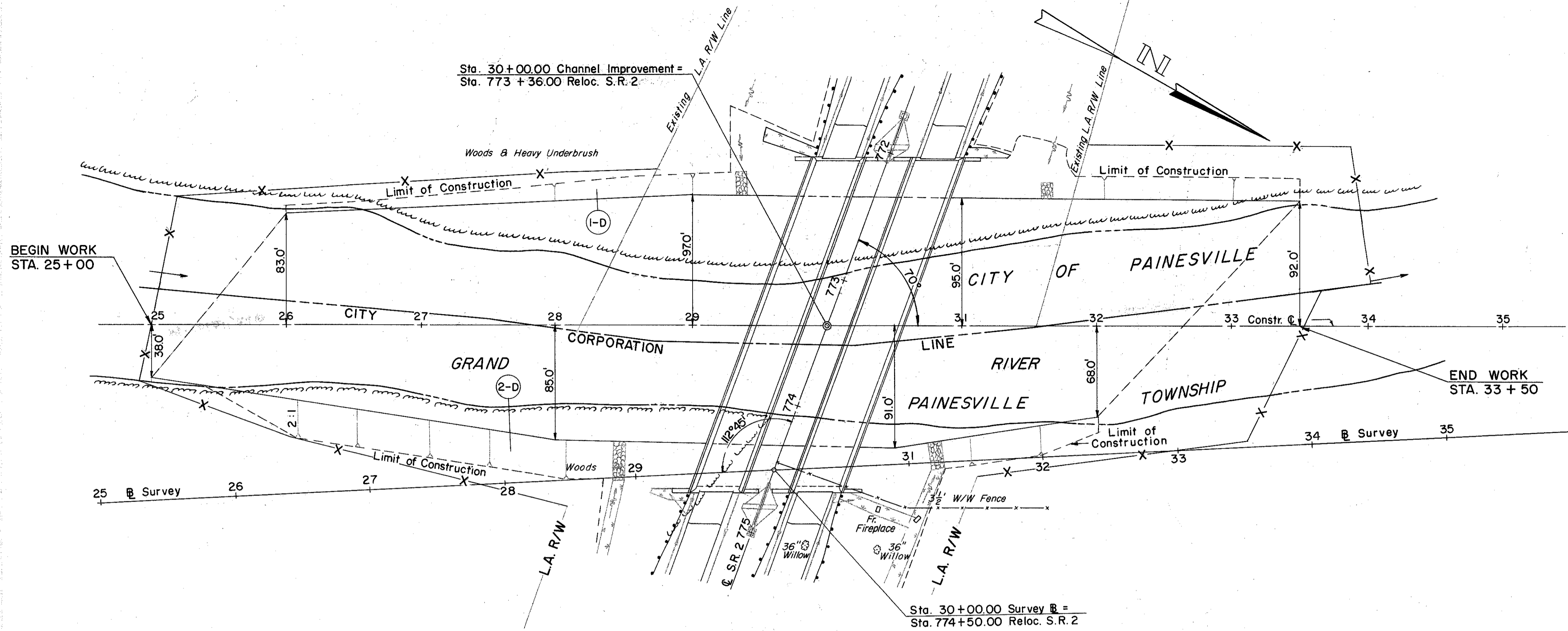


MICROFILMED
MAR 29 1984

LAKE COUNTY
LAK-2-16.49



① DRAINAGE U-329 (23)

REF NO.	STATION		SIDE	E-3 CHANNEL EXC.	
	FROM	TO		C.Y.	
I-D	26+00	33+50	Lt.	6,764	
* TOTAL				6,764	

② DRAINAGE F-329 (23)

REF NO.	STATION		SIDE	E-3 CHANNEL EXC.	
	FROM	TO		C.Y.	
2-D	25+00	32+00	Rt.	5,884	
* TOTAL				5,884	

* To Bridge Quantities

GRAVATION	=	0
EMBANKMENT	=	0
STABILIZATION	=	0